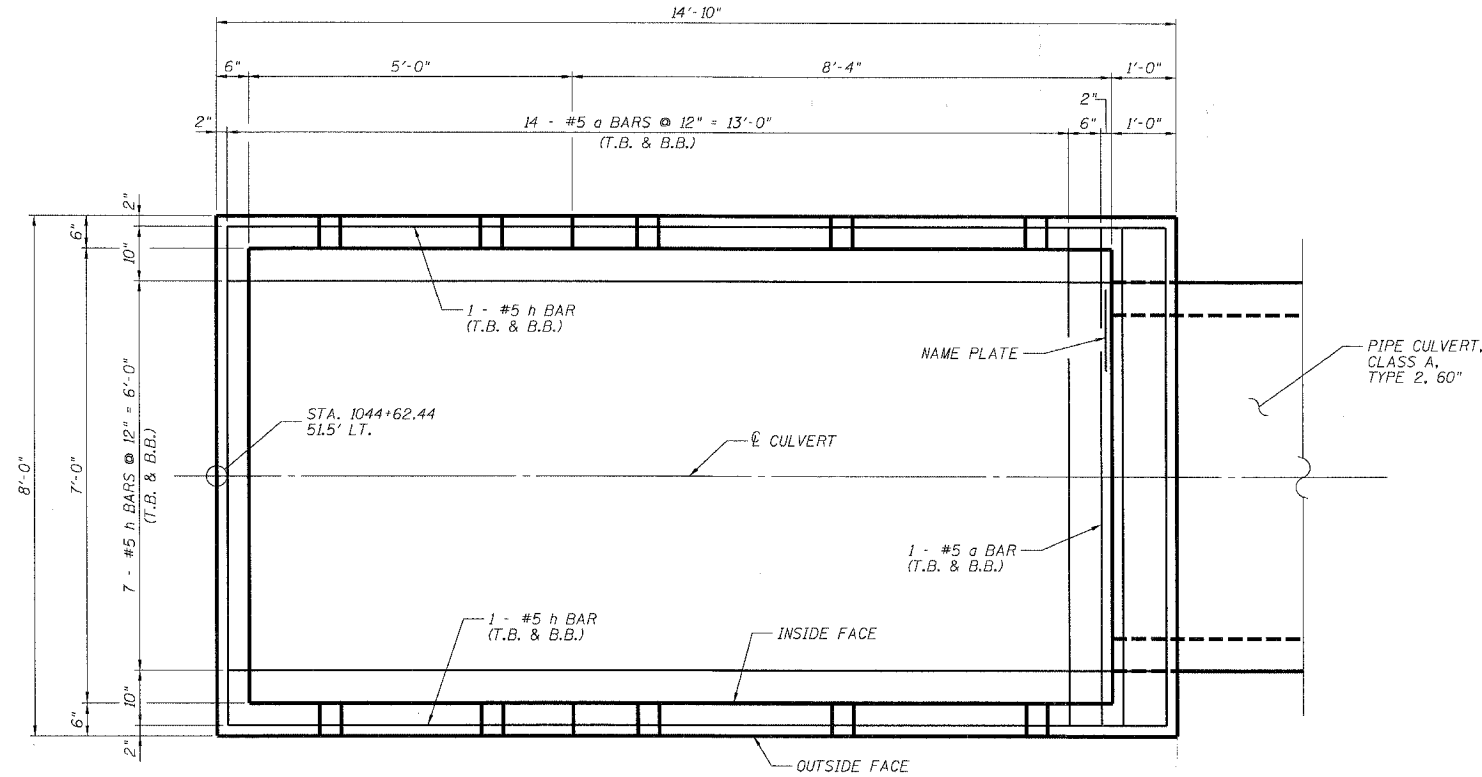


STATE OF ILLINOIS  
DEPARTMENT OF TRANSPORTATION

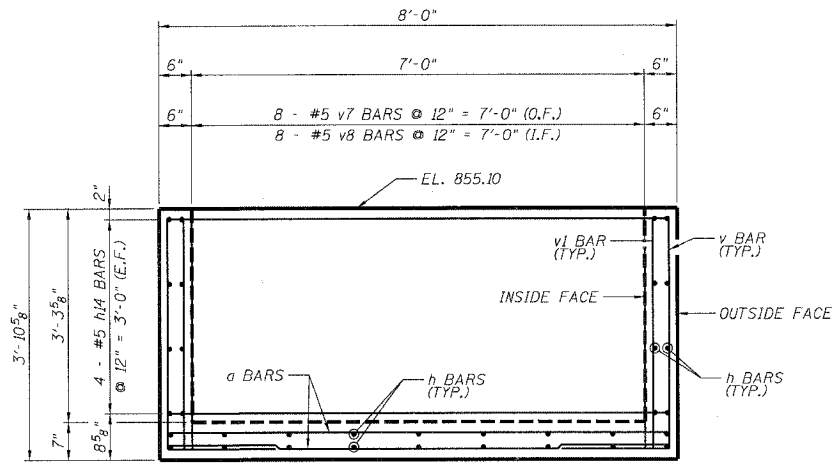
ROUTE NO. F.A.S. 1087	SECTION 106T-1	COUNTY STEPHENSON	SHEET NO. 78	SHEET NO. 47	SHEET NO. 02 04 SHEETS
FED. ROAD DIST. NO. 2		ILLINOIS	FED. AID PROJECT		

Contract # 64C84

TOTAL BILL OF MATERIALS		
ITEM	UNIT	QUANTITY
REMOVAL OF EXISTING STRUCTURE NO. 2	EACH	1
TEMPORARY SHEET PILING DROP BOX NO. 1	SQ. FT.	960
NAME PLATES	EACH	1



**BOTTOM SLAB**



**BACK WALL**

NOTE:  
FIELD CUT h BARS WHERE NECESSARY  
TO AVOID INTERFERENCE WITH PIPE  
CULVERT.

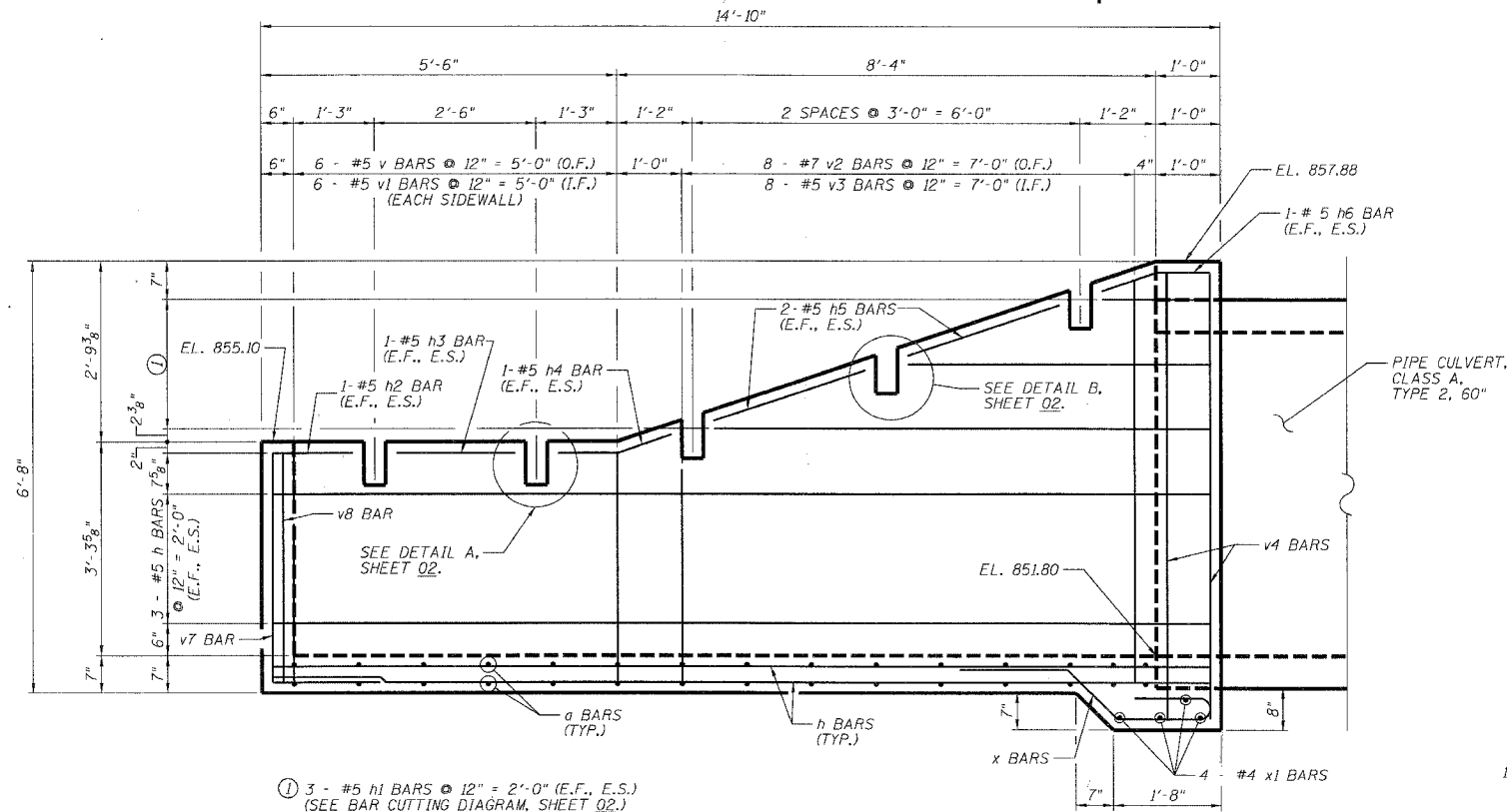
**LEGEND**

I.F. = INSIDE FACE  
O.F. = OUTSIDE FACE  
E.F. = EACH FACE  
T.B. = TOP OF BOTTOM SLAB  
B.B. = BOTTOM OF BOTTOM SLAB  
E.S. = EACH SIDE

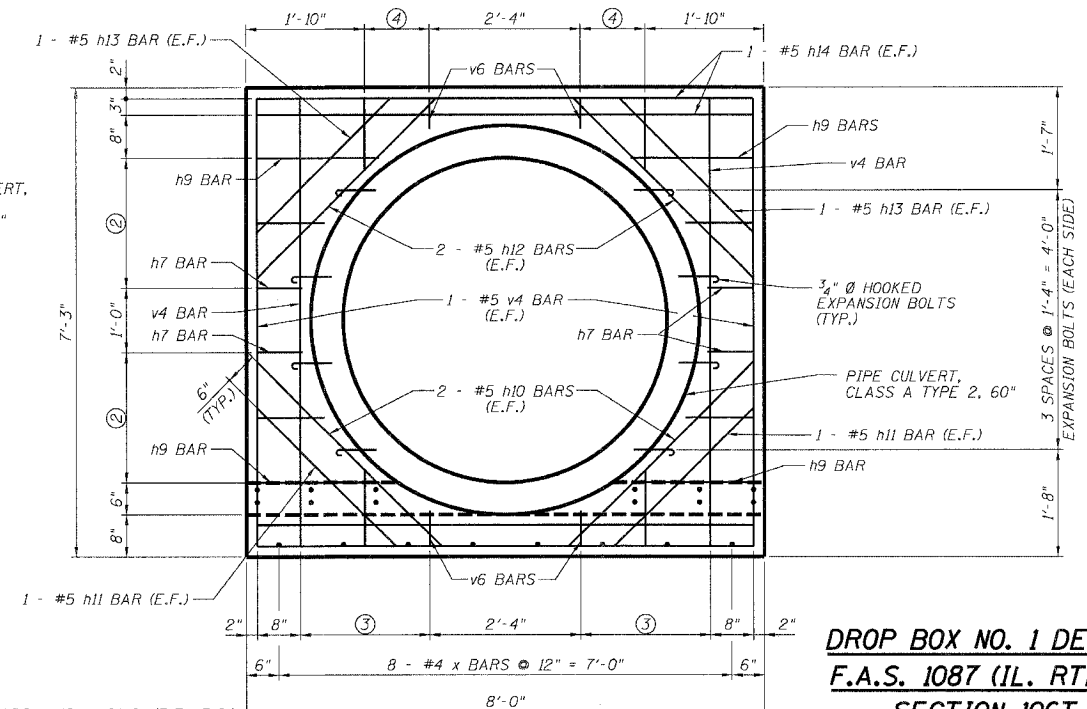
STATION 1044+62.44  
BUILT 200. BY  
STATE OF ILLINOIS  
IL 73 SECT. 106T-1  
LOADING HS20  
STR. NO. 089-1108

**NAME PLATE**

NOTE: SEE STANDARD DRAWING 515001  
FOR NAME PLATE DETAILS.



**SIDEWALL**



**HEADWALL**

**DROP BOX NO. 1 DETAILS**  
F.A.S. 1087 (IL. RTE. 73)  
SECTION 106T-1  
STEPHENSON COUNTY  
STATION 1044+62.44

DESIGNED - ASP	200
CHECKED - WSP	EXAMINED
DRAWN - BEM	PASSED
CHECKED - ASP	ENGINEER OF BRIDGE DESIGN
	ENGINEER OF BRIDGES AND STRUCTURES

- ② 1 EACH - #5 h7 THRU h9 BARS @ 12" = 2'-0" (E.F., E.S.)
- ③ 1 EACH - #5 v4 THRU v6 BARS @ 12" = 2'-0" (E.F.)
- ④ 1 EACH - #5 v5 THRU v6 BARS @ 12" = 1'-0" (E.F.)