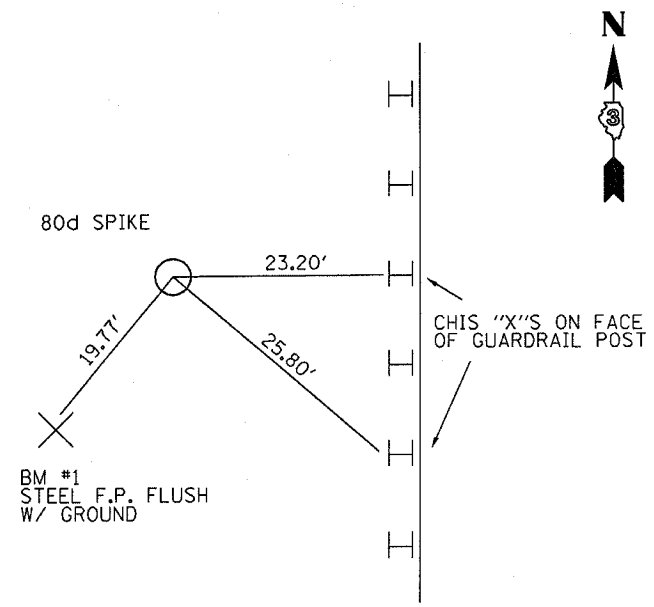
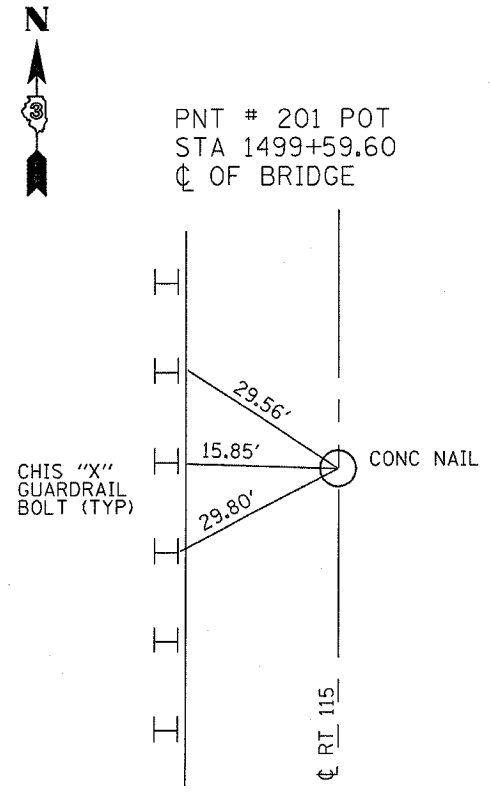


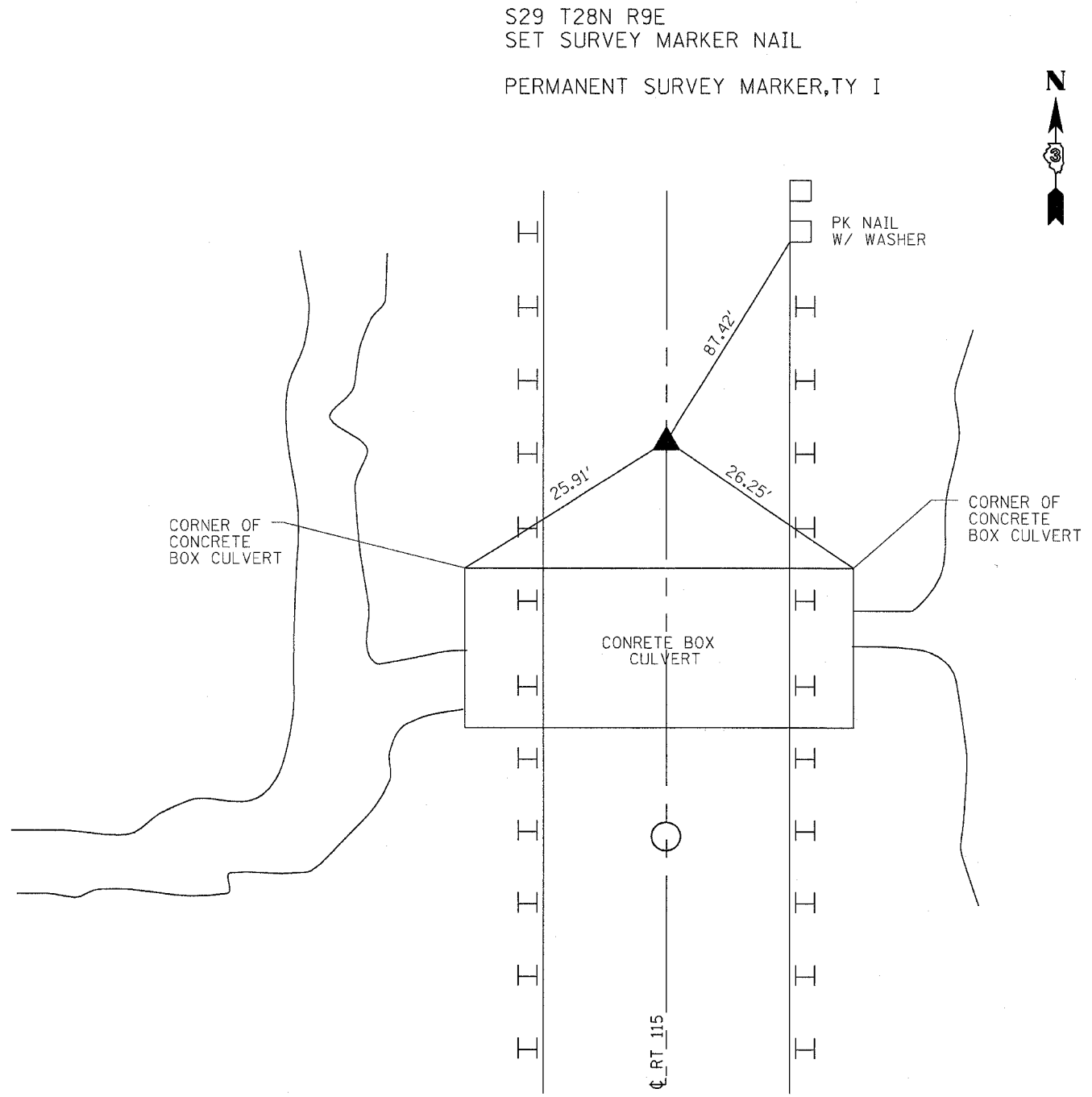
F.A.P. RTE.	SECTION	COUNTY	TOTAL SHEETS	SHEET NO.
796	(105)-1	FORD	25	6
STA.		TO STA.		
FED. ROAD DIST. NO. 1		ILLINOIS FED. AID PROJECT		



PNT # 540
 STA 1500+15.69
 39.40' RT



PNT # 201 POT
 STA 1499+59.60
 Q OF BRIDGE



PLOT DATE = Oct 22, 2007 - 08:59:12 AM
 FILE NAME = c:\projects\p07\p07.dwg
 PLOT SCALE = 20.0000 / 1" = 100.0000'
 USER NAME = carperandj