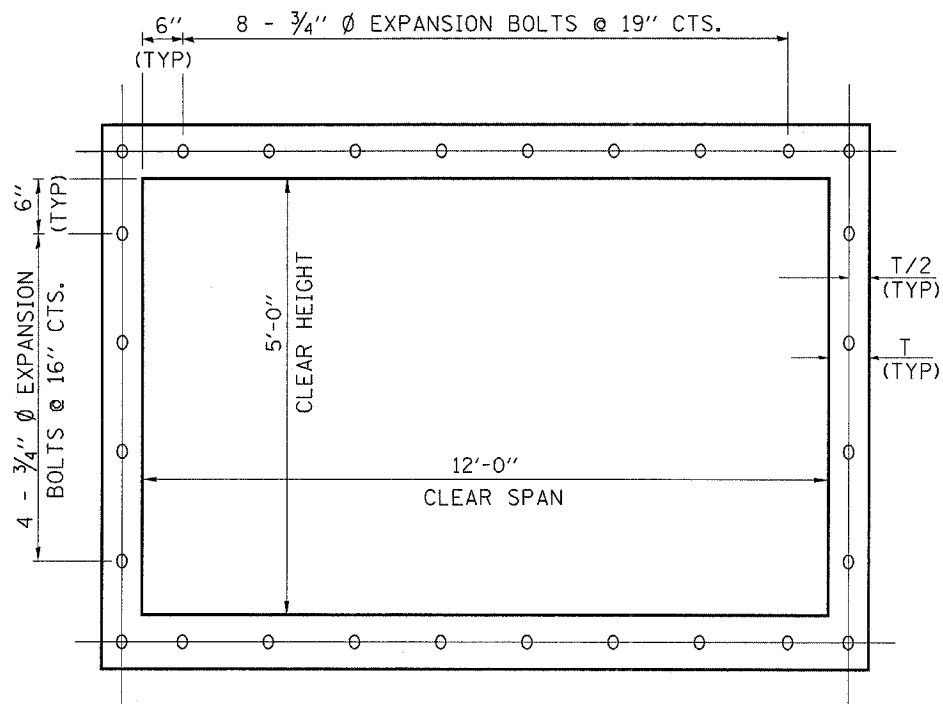
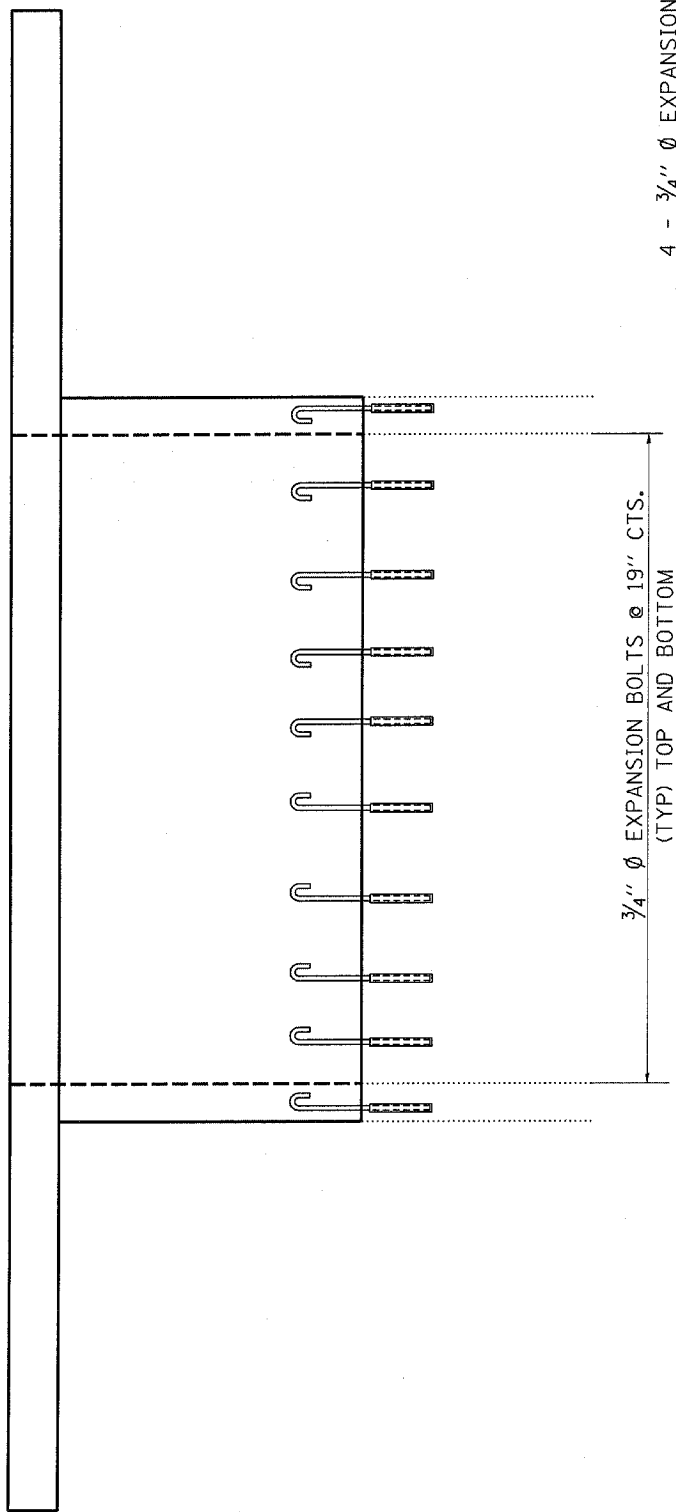


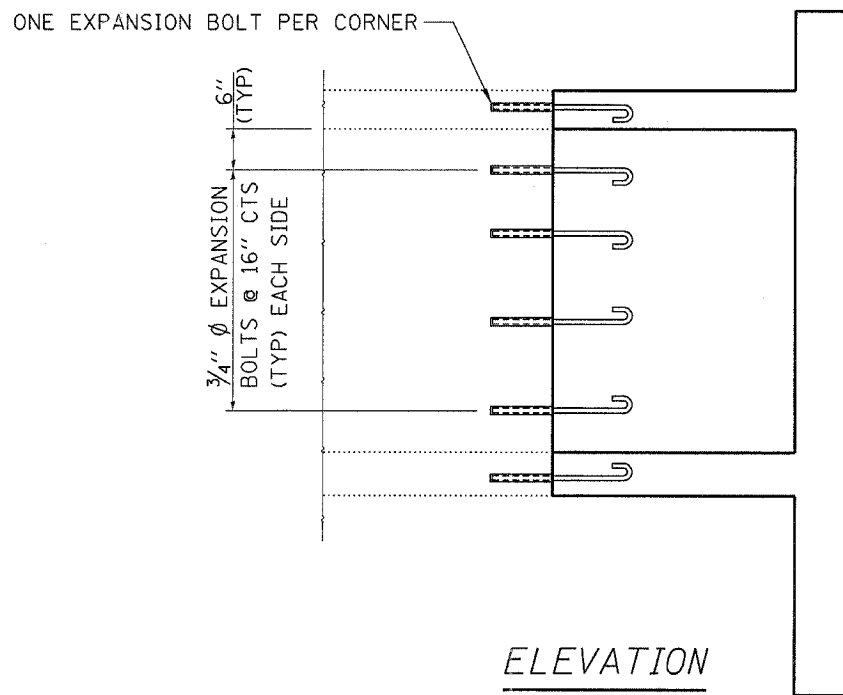
F.A.P. RTE.	SECTION	COUNTY	TOTAL SHEETS	SHEET NO.
796	(105)I-1	FORD	25	16
FED. ROAD DIST. NO.		ILLINOIS		



SECTION THRU BOX



PLAN



ELEVATION

NOTE: DOWNSTREAM END SHOWN, UPSTREAM END SIMILIAR

CLEAR SPAN OR CLEAR HEIGHT	NO. OF 3/4" Ø EXP. BOLTS REQ'D PER SIDE			
	BARREL RECONST. ≤ 15'		BARREL RECONST. > 15'	
FEET	NO.	SPACING	NO.	SPACING
2.0	**	**	**	**
2.5	2	18"	2	18"
3.0	2	24"	2	24"
4.0	3	18"	3	18"
5.0	4	16"	3	24"
6.0	5	15"	4	20"
7.0	5	18"	4	24"
8.0	6	17"	5	21"
9.0	6	19"	5	24"
10.0	7	18"	6	21"
11.0	8	17"	6	24"
12.0	8	19"	7	22"

NOTES:

EXPANSION BOLTS SHALL BE 3/4" Ø HOOKED BOLTS. HOOKED BOLTS SHALL EXTEND A MINIMUM OF 9" INTO NEW CONCRETE.

**USE MINIMUM ONE (1) EXPANSION BOLT AT EACH CORNER.

BILL OF MATERIAL
UPSTREAM

EXPANSION BOLTS 3/4"	EACH	28
----------------------	------	----

BILL OF MATERIAL
DOWNSTREAM

EXPANSION BOLTS 3/4"	EACH	28
----------------------	------	----

REVISIONS	
NAME	DATE

ILLINOIS DEPARTMENT OF TRANSPORTATION
EXPANSION BOLT DETAILS

FAP 796 (IL 115) SECTION (105)I-1
FORD COUNTY
STA. 1499+59.60
S.N. 027-2550

NOTE: UPSTREAM END SHOWN, DOWNSTREAM END SIMILIAR

Oct 22, 2007 - 08:05:46 AM
 c:\projects\ep03206\box\c\liverfs.dgn