

F.A.P. RTE.	SECTION	COUNTY	TOTAL SHEETS	SHEET NO.
796	(105)I-1	FORD	25	1
ILLINOIS PROJECT				

D-93-033-07
P-93-032-06

STATE OF ILLINOIS
DEPARTMENT OF TRANSPORTATION
DIVISION OF HIGHWAYS
**PROPOSED
HIGHWAY PLANS**

FAP 796 (IL 115)
SECTION (105)I-1
PROJECT: ACF-0796(013)
FORD COUNTY
C - 93 - 075 - 07

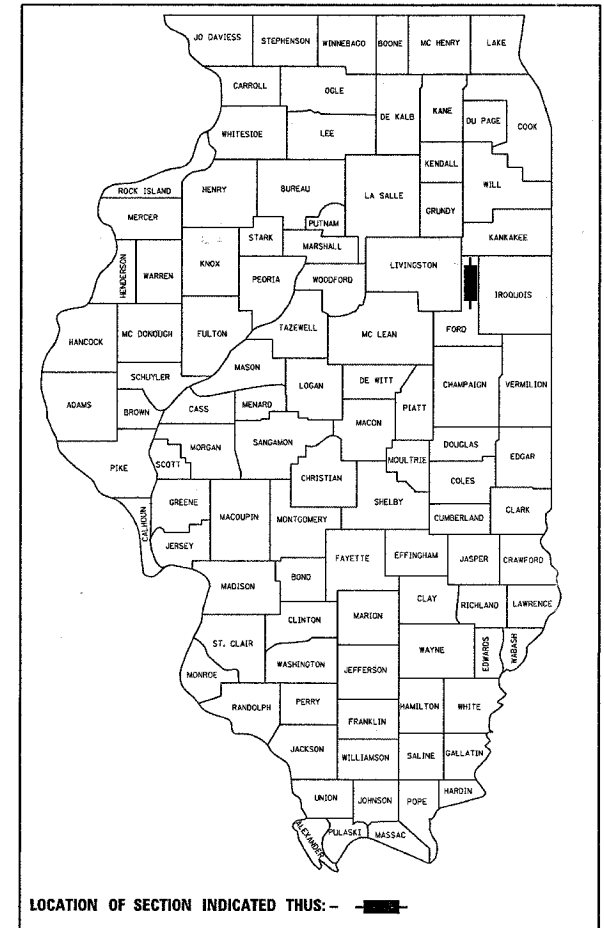
REPLACEMENT OF EXISTING CULVERT
WITH PRECAST BOX CULVERT
0.5 MILES SOUTH OF IL 116

INDEX OF SHEETS

- 1 COVER SHEET
- 2 GENERAL NOTES
- 3 SUMMARY OF QUANTITIES
- 4 TYPICAL SECTIONS
- 5 SCHEDULES
- 6 TIE POINTS
- 7-8 PLAN AND PROFILE SHEETS
- 9-11 STAGE CONSTRUCTION AND TRAFFIC CONTROL
- 12 RIGHT OF WAY PLANS
- 13-17 CULVERT PLANS
- 18-20 DETAILS
- 21-25 CROSS SECTIONS

STANDARDS

- 000001-05 STANDARD SYMBOLS, ABBREVIATIONS AND PATTERNS
- 001001-01 AREAS OF REINFORCEMENT BARS
- 001006 DECIMAL OF AN INCH AND OF A FOOT
- 280001-04 TEMPORARY EROSION CONTROL SYSTEMS
- 630001-07 STEEL PLATE BEAM GUARDRAIL
- 635006-02 REFLECTOR AND TERMINAL MARKER PLACEMENT
- 635011-01 REFLECTOR MARKER AND MOUNTING DETAILS
- 666001 RIGHT-OF-WAY MARKERS
- 667101 PERMANENT SURVEY MARKERS
- 701001-01 OFF-ROAD OPERATIONS 2L, 2W, MORE THAN 4.5 m (15') AWAY
- 701006-02 OFF-ROAD OPERATIONS 2L, 2W, 4.5 m (15') TO 600 mm (24") FROM PAVEMENT EDGE
- 701311-02 LANE CLOSURE, 2L, 2W, MOVING OPERATIONS - DAY ONLY
- 701321-09 LANE CLOSURE, 2L, 2W, BRIDGE REPAIR WITH BARRIER
- 701326-02 LANE CLOSURE, 2L, 2W, PAVEMENT WIDENING, FOR SPEEDS ≥ 45 MPH
- 701901 TRAFFIC CONTROL DEVICES
- 704001-04 TEMPORARY CONCRETE BARRIER
- 780001-01 TYPICAL PAVEMENT MARKINGS
- 781001-02 TYPICAL APPLICATIONS RAISED REFLECTIVE PAVEMENT MARKERS



LOCATION OF SECTION INDICATED THUS: —

RURAL MINOR ARTERIAL
2008 ADT = 650
P.V. = 81.6% S.U. = 11.7% M.U. = 6.7%



FULL SIZE PLANS HAVE BEEN PREPARED USING STANDARD ENGINEERING SCALES, REDUCED SIZED PLANS WILL NOT CONFORM TO STANDARD SCALES, IN MAKING MEASUREMENTS ON REDUCED PLANS, THE ABOVE SCALES MAY BE USED.

MICROFILMED _____
REEL NUMBER _____
AWARDED _____
RESIDENT ENGINEER _____
AS BUILT CHANGES WERE MADE
ON THE FOLLOWING SHEETS _____

JULIE 1-800-892-0123

DISTRICT 3 NO. (815) 434-6131

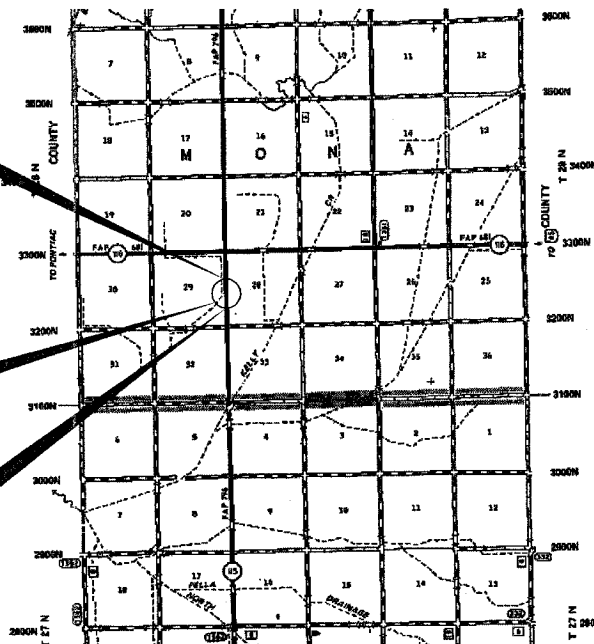
PROJECT ENGINEER: JOE KANNEL
UNIT CHIEF: MICHELE LINDEMANN
TOWNSHIP: MONA

CONTRACT NO. 66722

BEGIN IMPROVEMENT
STA 1496 + 90

SN 027-2550
STA 1499 + 59.60
12' X 5' PRECAST
CONCRETE BOX CULVERT

END IMPROVEMENT
STA 1502 + 10



LOCATION MAP
NOT TO SCALE

GROSS LENGTH = 520 FT. = .098 MI.
NET LENGTH = 520 FT. = .098 MI.

STATE OF ILLINOIS
DEPARTMENT OF TRANSPORTATION
DIVISION OF HIGHWAYS

SUBMITTED 10-22-2007

Harvey A. ...
DEPUTY DIRECTOR OF HIGHWAYS, REGION ENGINEER

December 7, 2007
Eric E. Haral
ENGINEER OF DESIGN AND ENVIRONMENT

December 7, 2007
Christine M. Reed
DIRECTOR OF HIGHWAYS, CHIEF ENGINEER

PRINTED BY THE AUTHORITY
OF THE STATE OF ILLINOIS

F.A.P. DIST.	SECTION	COUNTY	TOTAL SHEETS	SHEET NO.
796	(105)I-1	FORD	25	2
STA.		TO STA.		
FED. ROAD DIST. NO.		ILLINOIS	FED. AID PROJECT	

GENERAL NOTES

THE THICKNESS OF HMA SHOWN ON THE PLANS IS THE NOMINAL THICKNESS. DEVIATIONS FROM THE NOMINAL THICKNESS WILL BE PERMITTED WHEN SUCH DEVIATIONS OCCUR DUE TO IRREGULARITIES IN THE EXISTING SURFACE OR BASE ON WHICH THE HMA IS PLACED.

BEFORE ORDERING PIPE CULVERTS OR PIPE DRAINS, THE CONTRACTOR SHALL CONSULT THE ENGINEER FOR EXACT LENGTHS.

THE ENGINEER WILL BE THE SOLE JUDGE CONCERNING CURING TIME FOR THE VARIOUS HMA LIFTS.

FOR STABILIZATION, ALL TYPE III BARRICADES SHALL REQUIRE A MINIMUM OF FOUR SAND BAGS PER BARRICADE.

SEEDING SHALL NOT BE PERMITTED AT ANY TIME WHEN THE GROUND IS FROZEN, WET, OR IN AN UNTILLABLE CONDITION. LOCATIONS TO BE SEEDED WILL BE DETERMINED BY THE ENGINEER.

ONLY THOSE TREES DESIGNATED BY THE ENGINEER OR LISTED IN THE TREE REMOVAL SCHEDULE SHALL BE REMOVED. THE CONTRACTOR SHALL PROTECT ALL REMAINING TREES FROM DAMAGE DUE TO HIS OPERATIONS.

THE FINISHED EARTHWORK SHALL HAVE A VEGETATION SUSTAINING SOIL COVERING THE TOP FOUR INCHES IN AREAS TO BE SEEDED OR SODDED. THE VEGETATION SUSTAINING SOIL REQUIRED WILL NOT BE PAID FOR SEPARATELY BUT SHALL BE INCLUDED IN THE COST OF FURNISHED EXCAVATION.

ALL ELEVATIONS REFERRING TO U.S.G.S. MEAN SEA LEVEL DATUM.

ABANDONED UNDERGROUND UTILITIES THAT CONFLICT WITH CONSTRUCTION SHALL BE DISPOSED OF OUTSIDE THE LIMITS OF THE RIGHT OF WAY ACCORDING TO ARTICLE 202.03 OF THE STANDARD SPECIFICATIONS AND AS DIRECTED BY THE ENGINEER. THIS WORK WILL NOT BE PAID FOR SEPARATELY, BUT SHALL BE INCLUDED IN THE COST OF EARTH EXCAVATION.

ANY REFERENCE TO A STANDARD IN THESE PLANS SHALL BE INTERPRETED TO MEAN THE EDITION AS INDICATED BY THE SUBNUMBER SHOWN IN THE LIST OF STANDARDS OR THE COPY INCLUDED IN THESE PLANS.

THE FOLLOWING RATES OF APPLICATION HAVE BEEN USED IN CALCULATING PLAN QUANTITIES:

GRANULAR MATERIALS	2.05	TONS / CU YD
BITUMINOUS MAT PRIME COAT	0.08	GAL / SQ YD OR
	0.375	GAL / SQ YD
AGGREGATE PRIME COAT	0.002	TONS / SQ YD
HMA RESURFACING	112	LBS / SQ YD / IN
SHORT TERM PAVEMENT MARKING	10	FT /100 FT OF APPLICATION
MIX FOR CRACKS, JTS & FLGWYS	0.0003	TONS / SQ YD
LEVEL BINDER (HAND METHOD)	0.0005	TONS / SQ YD
TEMPORARY DITCH CHECKS	5	TONS AGGREGATE

MEMBERS OF JULIE KNOWN TO BE WITHIN THE LIMITS OF THE IMPROVEMENT ARE:

FRONTIER COMMUNICATIONS

STATE OF ILLINOIS
DEPARTMENT OF TRANSPORTATION
DISTRICT THREE

PREPARED BY: *Paul Powell*
DISTRICT STUDIES & PLANS ENGINEER

DATE: 10-22-07

EXAMINED BY: *Abubakar*
DISTRICT CONSTRUCTION ENGINEER

Justin
DISTRICT MATERIALS ENGINEER

James A. Walker
DISTRICT OPERATIONS ENGINEER

F.A.P. RTE.	SECTION	COUNTY	TOTAL SHEETS	SHEET NO.
796	(105)I-1	FORD	25	3
STA.		TO STA.		
FED. ROAD DIST. NO.		ILLINOIS FED. AID PROJECT		

SUMMARY OF QUANTITIES

001.FED./201.STATE

CODE NO.	CONSTRUCTION CODE TYPE: ITEM	UNIT	X088-2A
			TOTAL QUANTITY
20200100	EARTH EXCAVATION	CU YD	585
20400800	FURNISHED EXCAVATION	CU YD	528
20700220	POROUS GRANULAR EMBANKMENT	CU YD	89
20700400	POROUS GRANULAR EMBANKMENT, SPECIAL	CU YD	97
25000200	SEEDING, CLASS 2	ACRE	0.4
25000400	NITROGEN FERTILIZER NUTRIENT	POUND	36
25000500	PHOSPHORUS FERTILIZER NUTRIENT	POUND	36
25000600	POTASSIUM FERTILIZER NUTRIENT	POUND	36
25100115	MULCH, METHOD 2	ACRE	0.4
25100630	EROSION CONTROL BLANKET	SQ YD	32
28000250	TEMPORARY EROSION CONTROL SEEDING	POUND	36
28000300	TEMPORARY DITCH CHECKS	EACH	5
28000400	PERIMETER EROSION BARRIER	FOOT	1000
28000500	INLET AND PIPE PROTECTION	EACH	2
28200200	FILTER FABRIC	SQ YD	305
28100107	STONE RIPRAP, CLASS A4	SQ YD	305
31100300	SUB-BASE GRANULAR MATERIAL, TYPE A 4"	SQ YD	114
35501326	HOT-MIX ASPHALT BASE COURSE, 10 1/2"	SQ YD	109
35600708	HOT-MIX ASPHALT BASE COURSE WIDENING, 8"	SQ YD	97
40600100	BITUMINOUS MATERIALS (PRIME COAT)	GALLON	385
40600300	AGGREGATE (PRIME COAT)	TON	10
40600400	MIXTURE FOR CRACKS, JOINTS, AND FLANGEWAYS	TON	1.5
40600525	LEVELING BINDER (HAND METHOD), N50	TON	2.4
40600625	LEVELING BINDER (MACHINE METHOD), N50	TON	185
40600982	HOT-MIX ASPHALT SURFACE REMOVAL - BUTT JOINT	SQ YD	320
40600990	TEMPORARY RAMP	SQ YD	26
40603310	HOT-MIX ASPHALT SURFACE COURSE, MIX "C", N50	TON	279
44000100	PAVEMENT REMOVAL	SQ YD	109
48203029	HOT-MIX ASPHALT SHOULDERS, 8"	SQ YD	548
50800205	REINFORCEMENT BARS, EPOXY COATED	POUND	4552
50100100	REMOVAL OF EXISTING STRUCTURES	EACH	1
50105200	REMOVE EXISTING CULVERTS	EACH	2
50200100	STRUCTURE EXCAVATION	CU YD	117
54002020	EXPANSION BOLTS 3/4 INCH	EACH	56
54021205	PRECAST CONCRETE BOX CULVERT 12' X 5' (M273)	FOOT	28

SUMMARY OF QUANTITIES (CONTINUED)

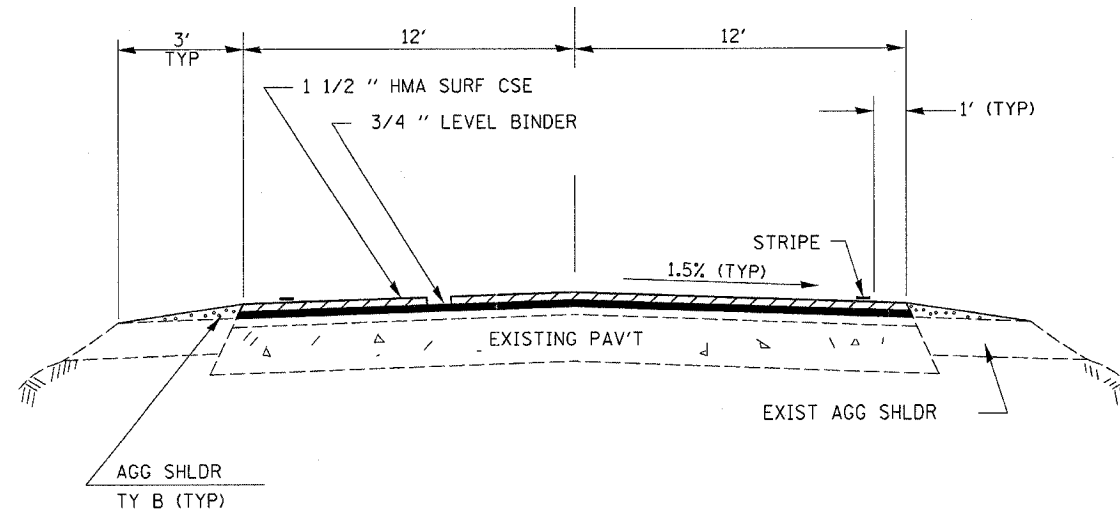
001.FED./201.STATE

CODE NO.	CONSTRUCTION CODE TYPE: ITEM	UNIT	X088-2A
			TOTAL QUANTITY
54003000	CONCRETE BOX CULVERTS	CU YD	26.4
542D0220	PIPE CULVERTS, CLASS D, TYPE 1 15"	FOOT	19
542D0223	PIPE CULVERTS, CLASS D, TYPE 1 18"	FOOT	30
54213450	END SECTIONS 15"	EACH	2
54213453	END SECTIONS 18"	EACH	2
60100935	PIPE DRAINS 10"	FOOT	10
60100955	PIPE DRAINS 15"	FOOT	10
61100605	MISCELLANEOUS CONCRETE	CU YD	0.4
63000000	STEEL PLATE BEAM GUARD RAIL, TYPE A	FOOT	475
63000025	STEEL PLATE BEAM GUARD RAIL, ATTACHED TO STRUCTURES	FOOT	50
63100167	TRAFFIC BARRIER TERMINAL TYPE 1, SPECIAL (TANGENT)	EACH	4
63200310	GUARDRAIL REMOVAL	FOOT	725
66600105	FURNISHING AND ERECTING RIGHT-OF-WAY MARKERS	EACH	5
66700205	PERMANENT SURVEY MARKERS, TYPE I	EACH	1
67000400	ENGINEER'S FIELD OFFICE, TYPE A	CAL MO	4
67100100	MOBILIZATION	L SUM	1
70100405	TRAFFIC CONTROL AND PROTECTION, STANDARD 701321	EACH	1
70100500	TRAFFIC CONTROL AND PROTECTION, STANDARD 701326	L SUM	1
70103815	TRAFFIC CONTROL SURVEILLANCE	CAL DAY	1
70106500	TEMPORARY BRIDGE TRAFFIC SIGNALS	EACH	1
70300100	SHORT-TERM PAVEMENT MARKING	FOOT	140
70300625	TEMPORARY PAINT PAVEMENT MARKING LINE 4"	FOOT	1400
70300635	TEMPORARY PAINT PAVEMENT MARKING LINE 6"	FOOT	175
70301000	WORK ZONE PAVEMENT MARKING REMOVAL	SQ FT	23
70400100	TEMPORARY CONCRETE BARRIER	FOOT	260
70400200	RELOCATE TEMPORARY CONCRETE BARRIER	FOOT	260
78001110	PAINT PAVEMENT MARKING - LINE 4"	FOOT	1400
78001130	PAINT PAVEMENT MARKING - LINE 6"	FOOT	175
78100100	RAISED REFLECTIVE PAVEMENT MARKER	EACH	10
78200410	GUARDRAIL MARKERS, TYPE A	EACH	8
78201000	TERMINAL MARKER - DIRECT APPLIED	EACH	4
78300100	PAVEMENT MARKING REMOVAL	SQ FT	226
78300200	RAISED REFLECTIVE PAVEMENT MARKER REMOVAL	EACH	10
X0322121	SHEET WATERPROOFING MEMBRANE SYSTEM	SQ YD	118
Z0030250	IMPACT ATTENUATORS, TEMPORARY (NON-REDIRECTIVE), TEST LEVEL 3	EACH	2
X0323988	TEMPORARY SOIL RETENTION SYSTEM	SQ FT	60
Z0020350	IMPACT ATTENUATORS, RELOCATE (NON-REDIRECTIVE), TEST LEVEL 3	EACH	2

* SPECIALTY ITEMS

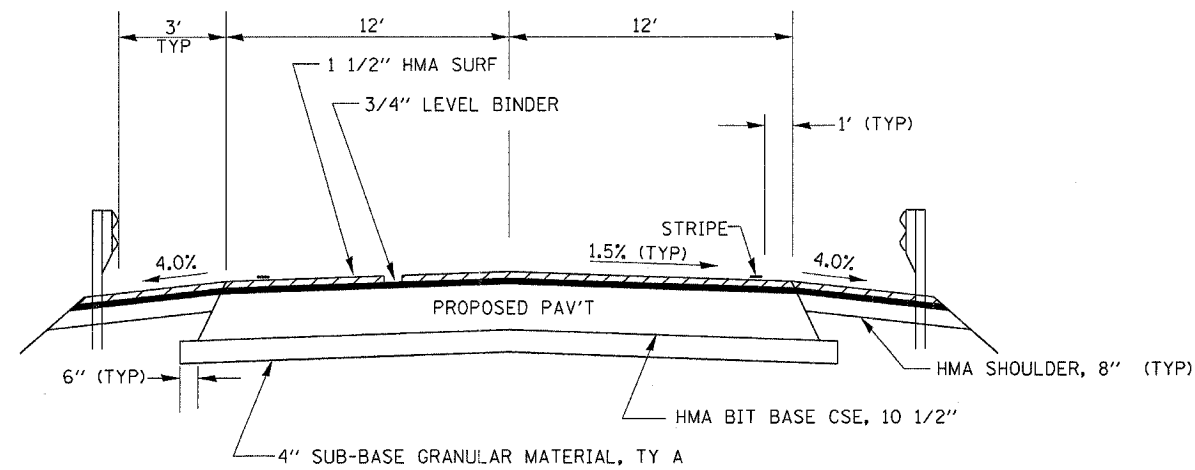
Rev.

F.A.P. RTE.	SECTION	COUNTY	TOTAL SHEETS	SHEET NO.
796	(105)I-1	FORD	25	4
STA.		TO STA.		
FED. ROAD DIST. NO.		ILLINOIS FED. AID PROJECT		



PROPOSED TYPICAL SECTION

STA 1496+90 TO STA 1499+39
STA 1499+80 TO STA 1502+10



PROPOSED TYPICAL SECTION

STA 1499+39 TO STA 1499+80

MIX DESIGN						
MIX	PG GRADE	MAX % RAP ALLOWABLE	DESIGN AIR VOIDS	MIX COMPOSITION	FRICTION AGG	DENSITY TEST METHOD
HMA SURFACE	PG 64-22	15%	4.0% @N50	IL 12.5 OR IL 9.5	MIXTURE C	NUCLEAR/CORES
LEVELING BINDER	PG 58-22	25%	4.0% @N50	IL 9.5	-	SATISFACTION OF ENGINEER
HMA BASE COURSE	PG 58-22	25%	4.0% @N50	IL 19.0	-	NUCLEAR/CORES
HMA BASE CSE WIDENING	PG 58-22	25%	4.0% @N50	IL 19.0	-	NUCLEAR/CORES
HMA SHOULDER	PG 58-22	50%	3.0% @N50	IL 19.0	-	•

* MATERIAL SHALL BE COMPACTED TO 93.0-97.4 PERCENT OF THE MAXIMUM THEORETICAL DENSITY, EXCEPT THAT WHEN PLACED AS A FIRST LIFT ON AN UNIMPROVED SUBGRADE THE MINIMUM PERCENT COMPACTION SHALL BE 92.0 PERCENT. THE MAXIMUM THEORETICAL DENSITY SHALL BE DETERMINED FROM THE MOVING AVERAGE AS SPECIFIED IN THE OC/QA SPECIFICATION.

** IF RAP OPTION IS SELECTED, THE ASPHALT CEMENT GRADE MAY NEED TO BE ADJUSTED. THIS WILL BE DETERMINED BY THE ENGINEER.

Oct 22, 2007 - 08:10:45 AM
c:\projects\ep03206\sheet.s.dgn

F.A.P. RTE.	SECTION	COUNTY	TOTAL SHEETS	SHEET NO.
796	(105)1-1	FORD	25	5
STA.		TO STA.		
FED. ROAD DIST. NO.		ILLINOIS FED. AID PROJECT		

LOCATION	LENGTH	HMA SURF CSE	HMA LEVEL BINDER	HMA BSE CSE 10 1/2"	SUB-BASE GRAN MAT 4"	HMA SURF REM BUTT JT	TEMP RAMP	BIT MAT (PR CT)	AGG (PR CT)	MIX FOR CRACKS, JTS & FLGWYS	LEVEL BINDER (H.M.)	HMA SHLDR 8"	HMA BSE CSE WIDEN 8"	PVMT REM
	FOOT	TON	TON	SQ YD	SQ YD	SQ YD	SQ YD	GAL	TON	TON	TON	SQ YD	SQ YD	SQ YD
PAVEMENT AREA:														
1496+00 TO 1496+90	90	20	2			160	13	38	1	0.1	0.2			
1496+90 TO 1499+39	249	56	28					106	2.7	0.4	0.7			
1499+39 TO 1499+80	41	9	5	109	114			17	0.4	0.1	0.1			109
1499+80 TO 1502+10	230	52	26					98	2.5	0.4	0.6			
1502+10 TO 1503+00	90	20	2					38	1	0.1	0.2			
SHOULDER AREA:														
RIGHT SIDE	402.5	61	61					43.8	1.1	0.2	0.3	274	97	
LEFT SIDE	402.5	61	61					43.8	1.1	0.2	0.3	274		
TOTAL	1505	279	185	109	114	320	26	384.6	9.8	1.5	2.4	548	97	109

LOCATION	REASON	PIPE CULV CL D, TY 1	PIPE CULV CL D, TY 1	END SECT 15"	END SECT 18"	EROSION CONTROL BLANKET	STONE DUMPED RIP RAP CL A4	FILTER FABRIC	PIPE DRAIN 10"	PIPE DRAIN 15"	MISC CONC	PROP U.S. INVERT ELEV	PROP D.S. INVERT ELEV
STATION	OFFSET	CL D, TY 1	CL D, TY 1	15"	18"	SQ YD	SQ YD	SQ YD	FOOT	FOOT	CU YD		
1498+81	39.5' RT								10		0.2		
1499+59.60	RT						222	222					
1499+59.60	LT						83	83					
1499+62	43.5' RT								10		0.2		
1499+90.5	27' RT	1	19	2		16						651.17	651.09
1501+31	39' RT	1			2	16						651.24	651.13
TOTAL		2	19	2	2	32	305	305	10	10	0.4		

LOCATION	TEMP EROSION SEEDING	PERIMETER EROSION BARRIER	TEMP DITCH CHECKS	INLET & PIPE PROT
	LB	FOOT	EACH	EACH
RIGHT SIDE	29	500	3	2
LEFT SIDE	7	500	2	
TOTAL	36	1000	5	2

LOCATION	EARTH EXCAVATION CU YD	FURNISHED EXCAVATION CU YD
DITCH WORK	512	528
TOTAL	512	528

LOCATION	GUARD-RAIL REM	SPBGR TY A	GUARDRAIL ATTACHED TO STRUCTURE	TBT TY I SPECIAL TANGENT	GUARD-RAIL MARK	TERMINAL MARK DIR APPLIED
	FOOT	FOOT	FOOT	EACH	EACH	EACH
1497+22 TO 1497+72, RT	50			1		1
1497+72 TO 1499+47, RT	175	175			3	
1499+47 TO 1499+72, RT	25		25			
1499+72 TO 1500+34.5, RT	62.5	62.5			1	
1500+34.5 TO 1500+84.5, RT	50			1		1
1498+34 TO 1498+84, LT	50			1		1
1498+84 TO 1499+46.5, LT	62.5	62.5			1	
1499+46.5 TO 1499+71.5, LT	25		25			
1499+71.5 TO 1501+46.5, LT	175	175			3	
1501+46.5 TO 1501+96.5, LT	50			1		1
TOTAL	725	475	50	4	8	4

LOCATION	SEEDING CL 2	MULCH METHOD 2	NIT FERT NUT	PHOS FERT NUT	POT FERT NUT
	ACRE	ACRE	LB	LB	LB
RIGHT SIDE	0.3	0.3	27	27	27
LEFT SIDE	0.1	0.1	9	9	9
TOTAL	0.4	0.4	36	36	36

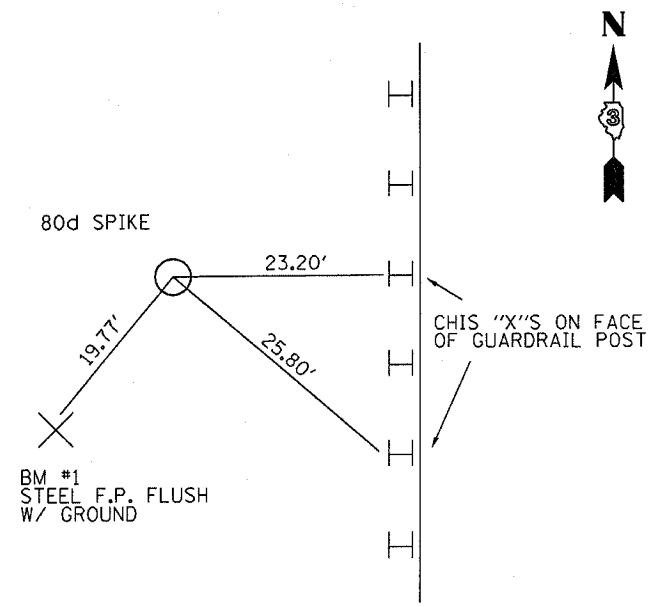
LOCATION	EACH
STA. 1497+00, 35' RT	1
STA. 1498+00, 60' RT	1
STA. 1499+25.44, 60' RT	1
STA. 1501+00, 60' RT	1
STA. 1502+00, 35' RT	1
TOTAL	5

LOCATION	TEMP PVMT MARK WHITE 4"	TEMP PVMT MARK YELLOW 6"	SHORT TERM PVMT MARK	WORK ZONE PVMT MARKING REMOVAL	RAISED REF PVMT MARKER REMOVAL	RAISED REFLECT PVMT MARKER
	FOOT	FOOT	FOOT	SQ FT	EACH	EACH
STA 1496+00 TO 1503+00	700	1400	140	23	10	10
TOTAL		1400	140	23	10	10

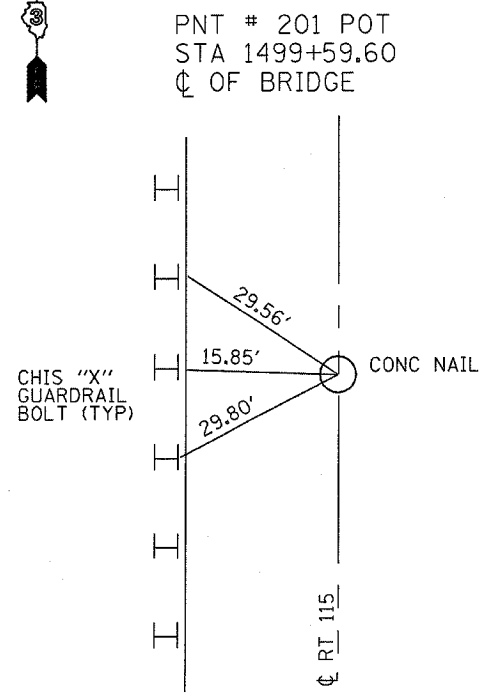
LOCATION	LENGTH	PAINT PVMT MARK WHITE 4"	PAINT PVMT MARK YELLOW 6"	RAISED REF PVMT MARKER REMOVAL	RAISED REFLECT PVMT MARKER	PVMT MARK REM
	FOOT	FOOT	FOOT	EACH	EACH	SQ FT
STA 1496+00 TO 1503+00	700	1400	175	10	10	
STA 1497+64 TO 1501+55, RT	391					130
STA 1498+16 TO 1501+03, LT	287					96
TOTAL		1400	175	10	10	226

Oct 22, 2007 - 09:45:50 AM c:\projects\ep03206\cover.sht.dgn

F.A.P. RTE.	SECTION	COUNTY	TOTAL SHEETS	SHEET NO.
796	(105)-1	FORD	25	6
STA.		TO STA.		
FED. ROAD DIST. NO. 1		ILLINOIS FED. AID PROJECT		

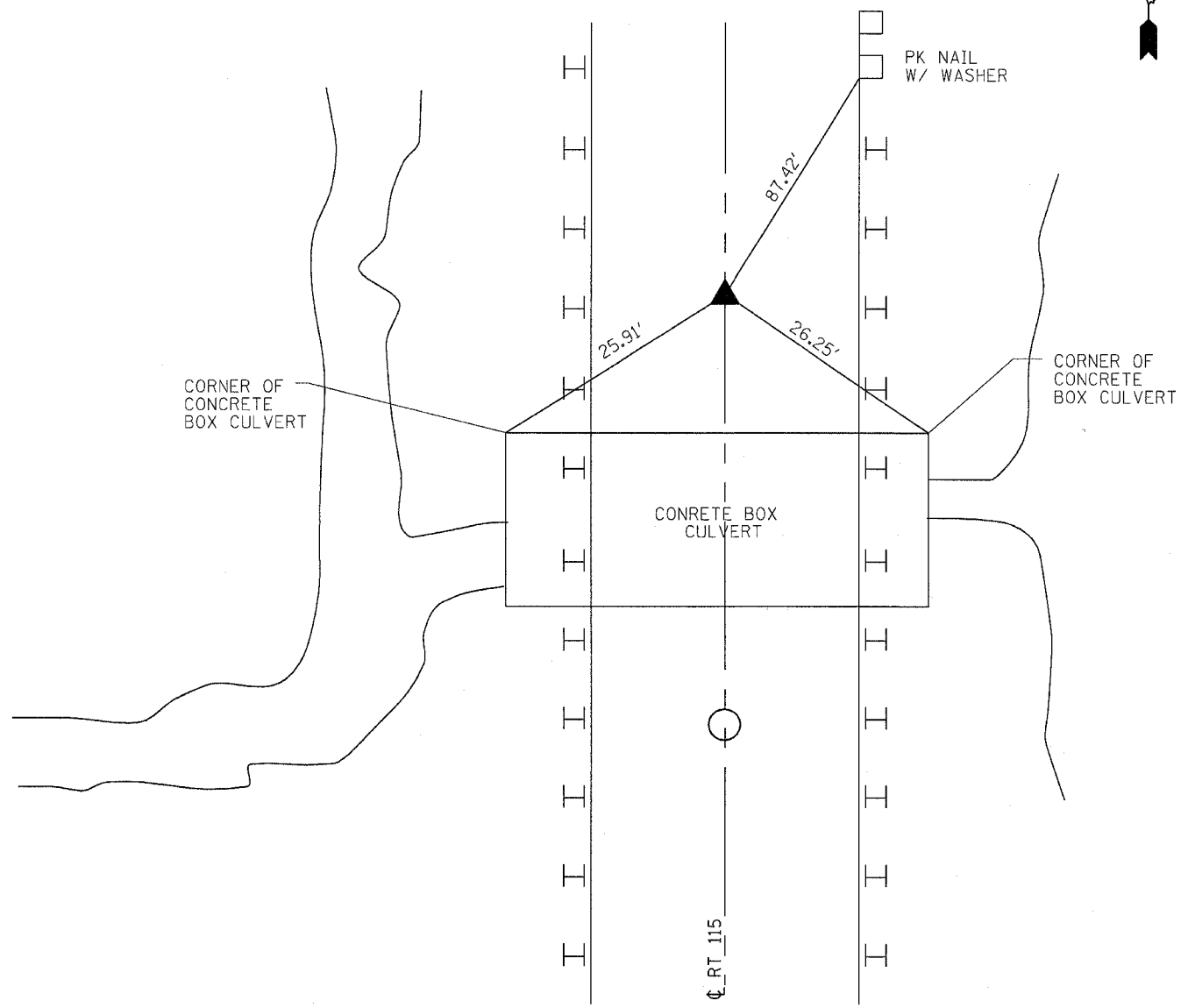


PNT # 540
 STA 1500+15.69
 39.40' RT



PNT # 201 POT
 STA 1499+59.60
 Q OF BRIDGE

S29 T28N R9E
 SET SURVEY MARKER NAIL
 PERMANENT SURVEY MARKER, TY I



PLOT DATE = Oct 22, 2007 - 08:59:12 AM
 FILE NAME = c:\projects\p07\p07.dwg
 PLOT SCALE = 20.0000 / 1" = 100.0000'
 USER NAME = carperandj

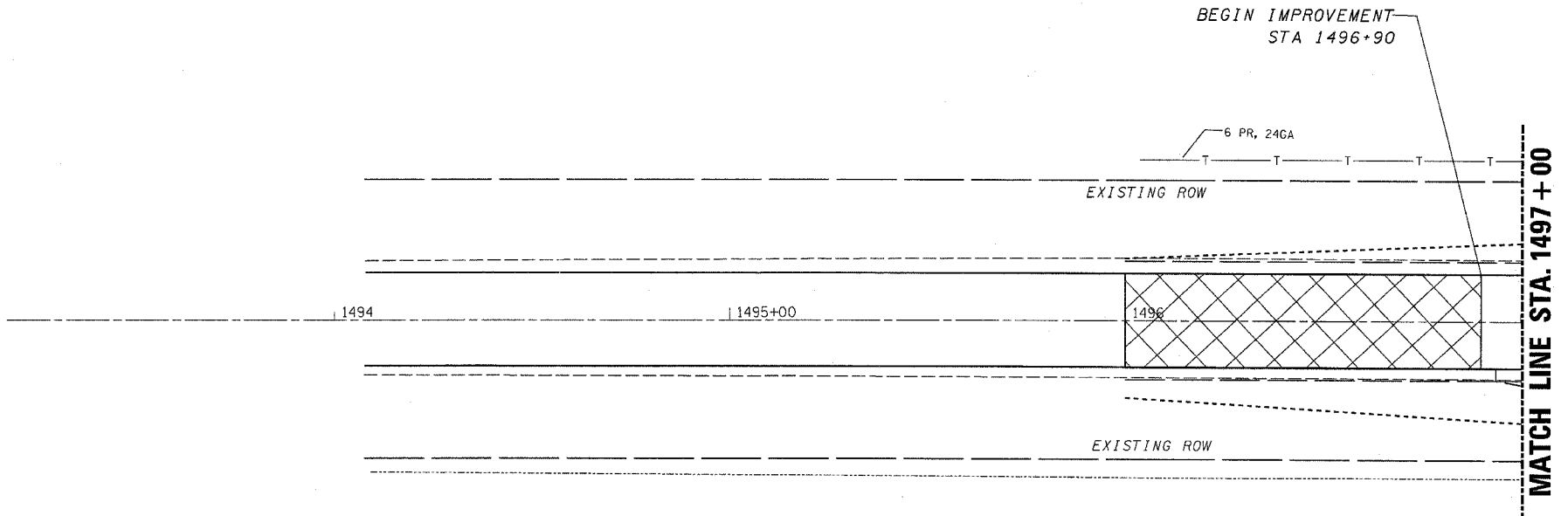
F.A.P. RTE.	SECTION	COUNTY	TOTAL SHEETS	SHEET NO.
796	(105)-1	FORD	25	7
STA.		TO STA.		
FED. ROAD DIST. NO. 1		ILLINOIS FED. AID PROJECT		



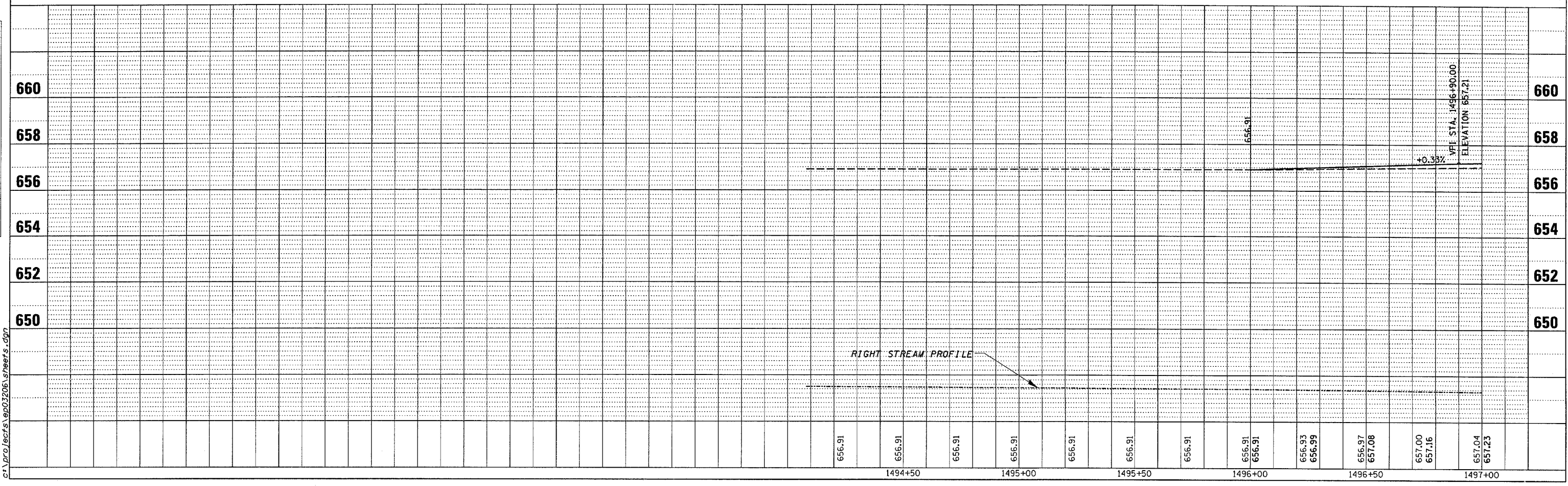
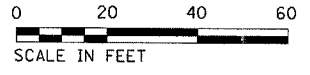
PLAN	DATE
BY	
DESIGNED	
CHECKED	
APPROVED	
NO.	

PROFILE	DATE
BY	
DESIGNED	
CHECKED	
APPROVED	
NO.	

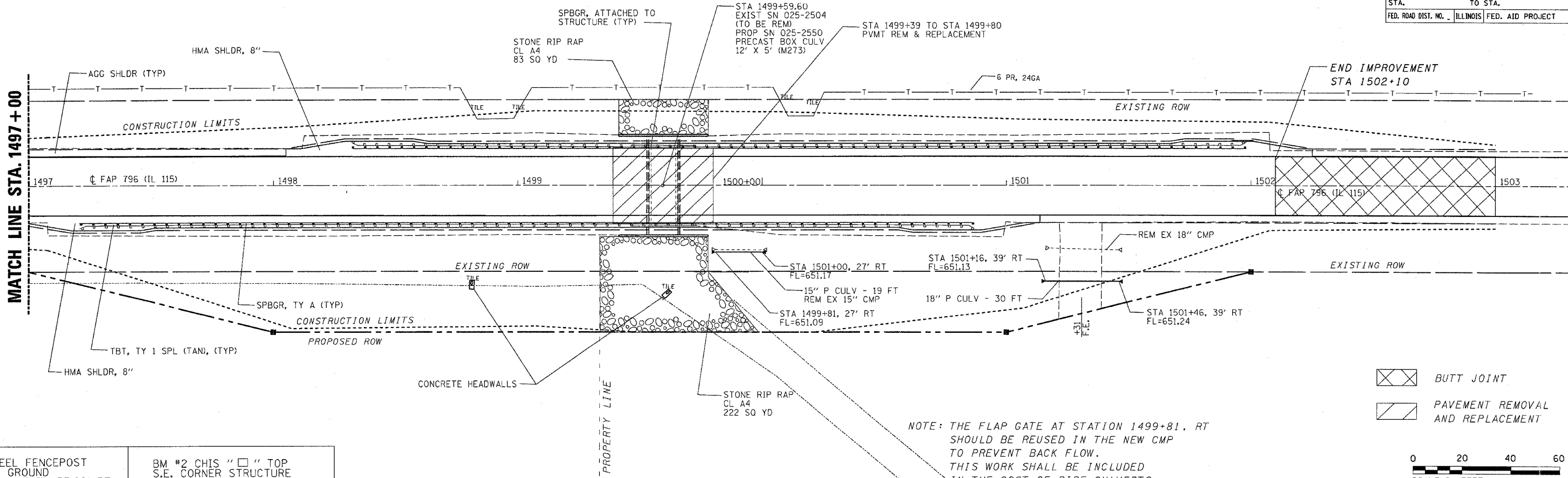
Oct 22, 2007 - 08:08:15 AM
 cr:\proj\scrs\ep03206\shhets.dgn



BUTT JOINT



F.A.P. RTE.	SECTION	COUNTY	TOTAL SHEETS	SHEET NO.
796	(105)-1	FORD	25	8
STA.	TO STA.			
FED. ROAD DIST. NO.	ILLINOIS	FED. AID PROJECT		

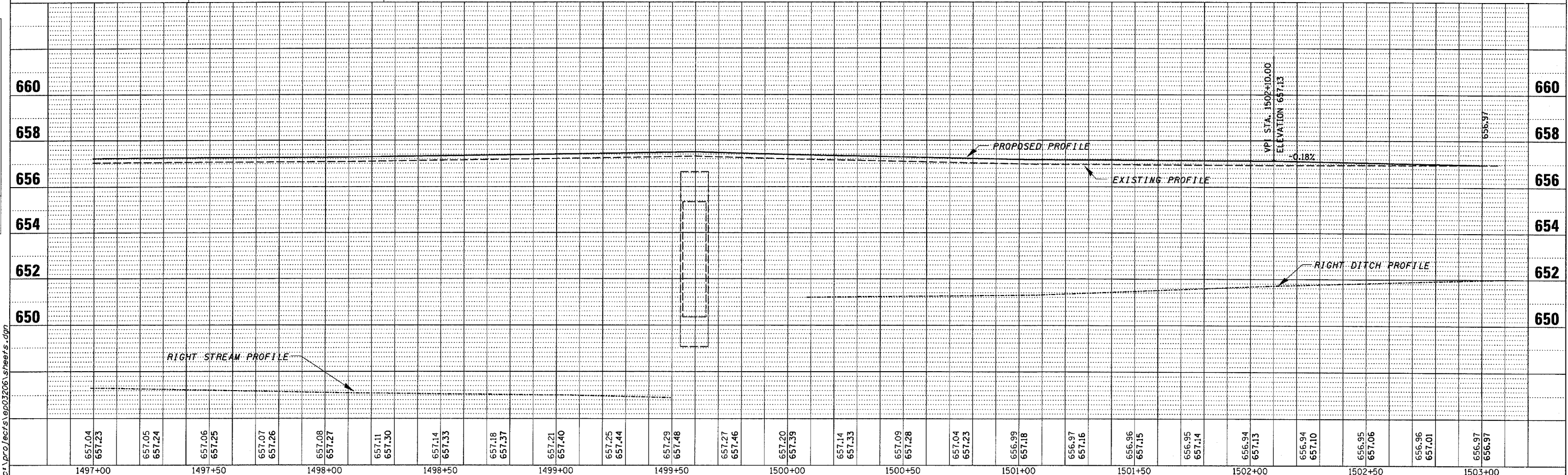


- BUTT JOINT
- PAVEMENT REMOVAL AND REPLACEMENT



NOTE: THE FLAP GATE AT STATION 1499+81, RT SHOULD BE REUSED IN THE NEW CMP TO PREVENT BACK FLOW. THIS WORK SHALL BE INCLUDED IN THE COST OF PIPE CULVERTS.

BM #1 STEEL FENCEPOST FLUSH W/ GROUND STA 1500+26.507 55.89' RT
 BM #2 CHIS " " " TOP S.E. CORNER STRUCTURE STA 1499+72.363 15.98' LT



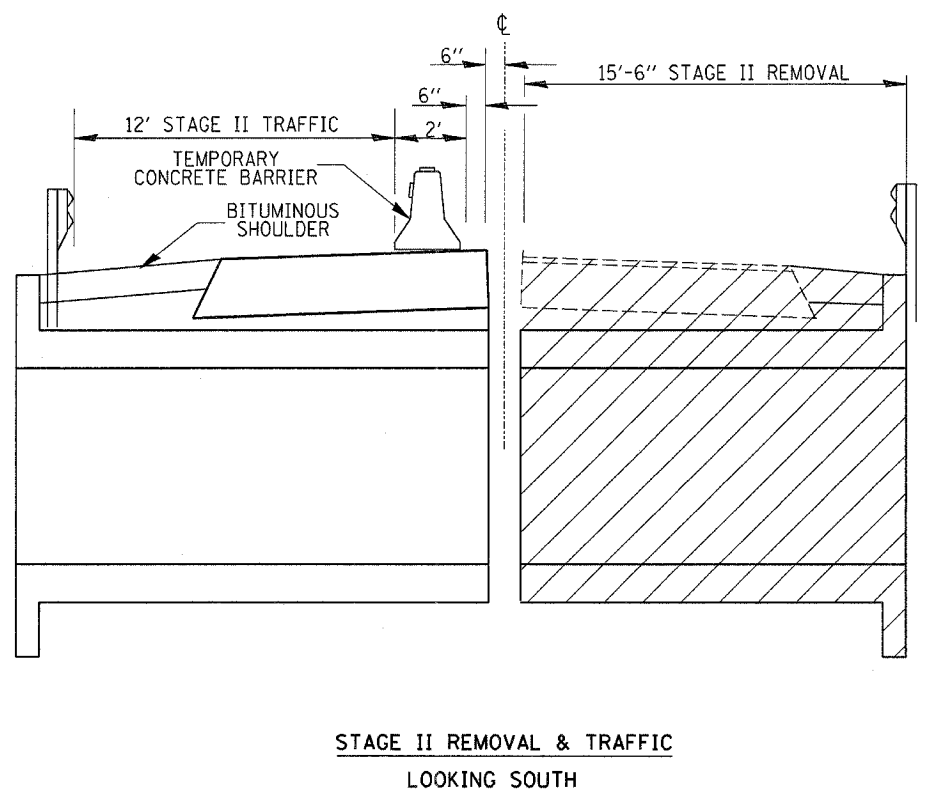
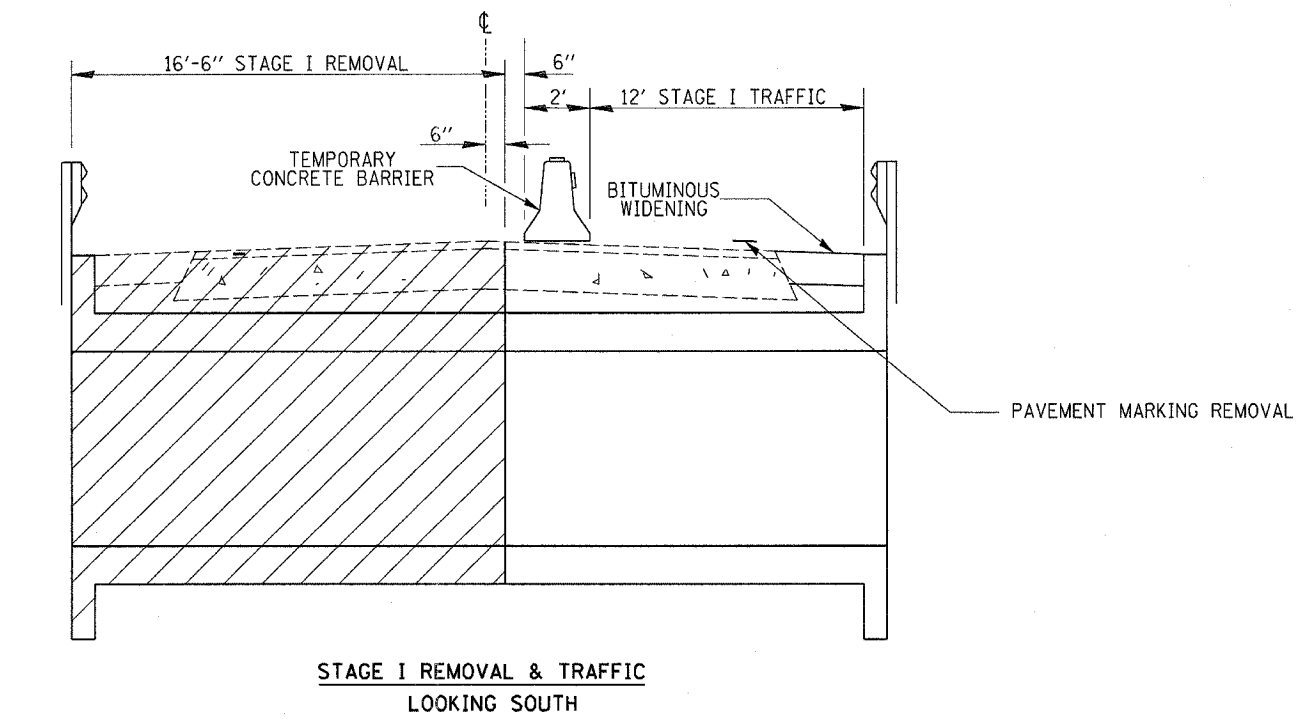
657.04	657.23	657.05	657.24	657.06	657.25	657.07	657.26	657.08	657.27	657.11	657.30	657.14	657.33	657.18	657.37	657.21	657.40	657.25	657.44	657.29	657.48	657.27	657.46	657.20	657.39	657.14	657.33	657.09	657.28	657.04	657.23	656.99	657.18	656.97	657.16	656.96	657.15	656.95	657.14	656.94	657.13	656.94	657.10	656.95	657.06	656.96	657.01	656.97	656.97						
1497+00		1497+50		1498+00		1498+50		1499+00		1499+50		1500+00		1500+50		1501+00		1501+50		1502+00		1502+50		1503+00																															

PLAN
 SURVEYED BY
 DATE
 NOTE BOOK NO.
 ALIGNMENT CHECKED
 RT. OF WAY CHECKED
 ROAD FILE NAME

PROFILE
 SURVEYED BY
 DATE
 NOTE BOOK NO.
 GRADES CHECKED
 B.M. NOTED
 STRUCTURE NOTATIONS OK'D

Oct 22, 2007 - 08:08:40 AM
 c:\proj\ecrs\p03206\sheet8.dgn

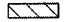







F.A.P. RTE.	SECTION	COUNTY	TOTAL SHEETS	SHEET NO.
796	(105)I-1	FORD	25	9
STA.		TO STA.		
FED. ROAD DIST. NO. .		ILLINOIS FED. AID PROJECT		

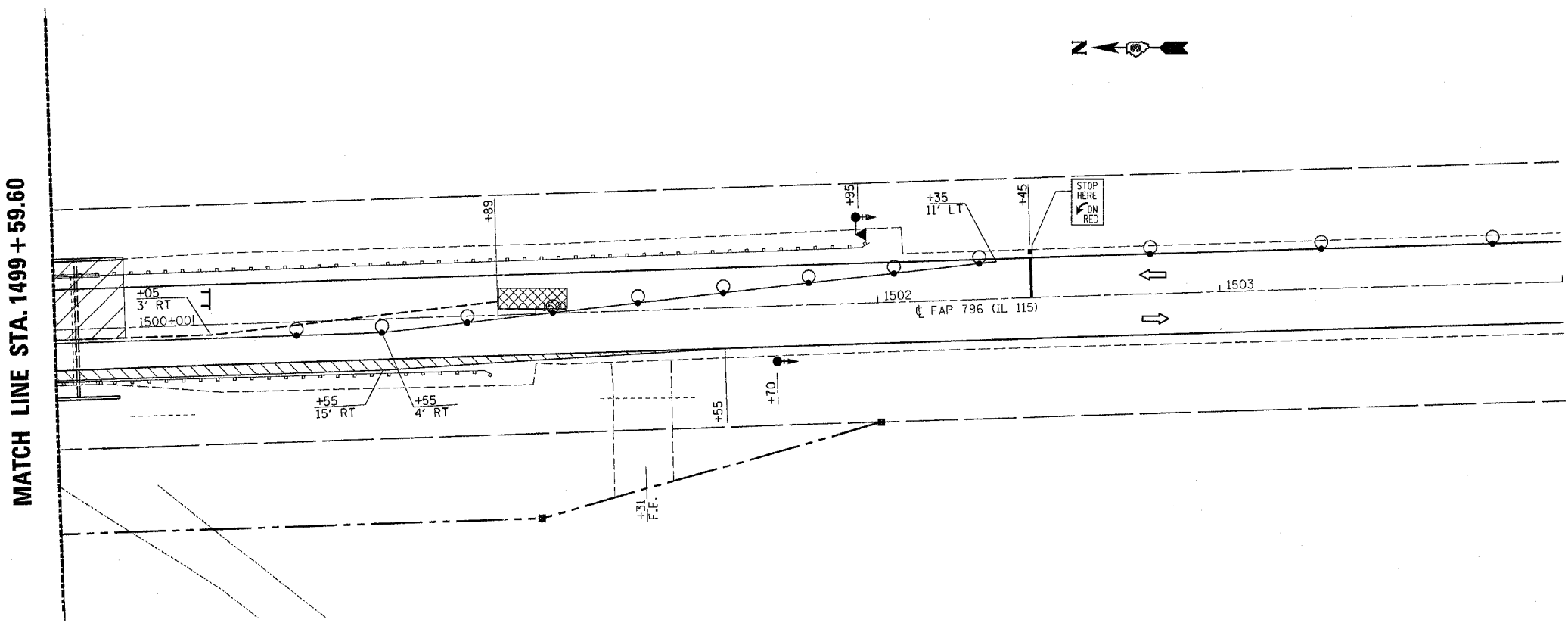
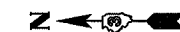
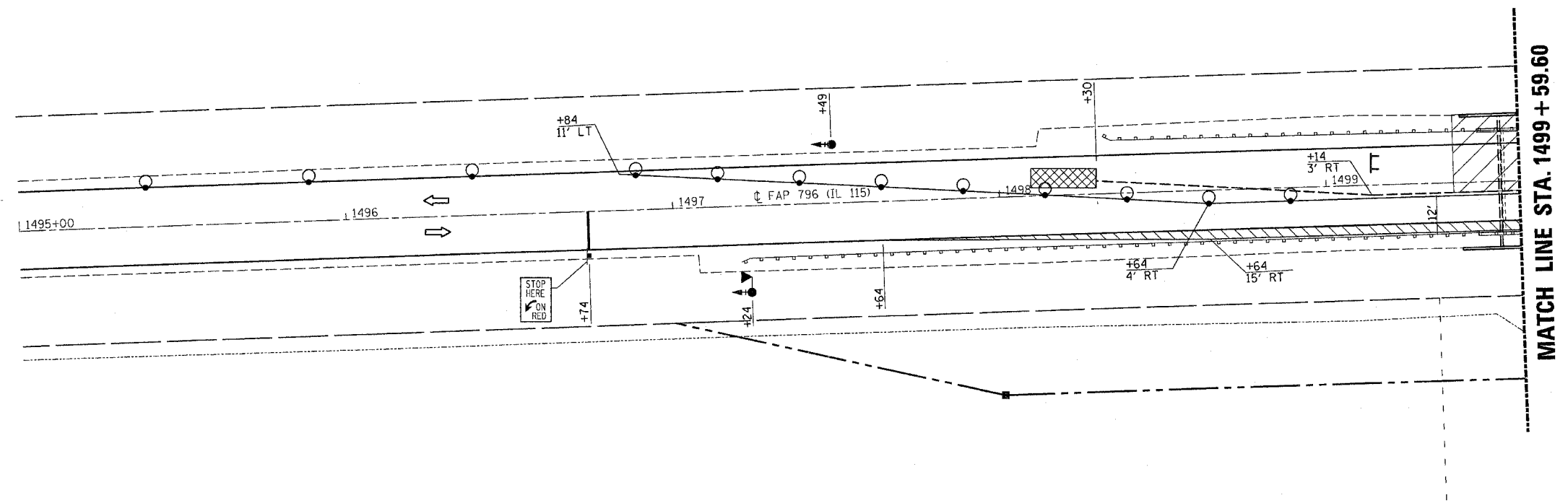


Oct 22, 2007 - 08:08:18 AM
c:\projects\ep03206\sheet.s.dgn

F.A.P. RTE.	SECTION	COUNTY	TOTAL SHEETS	SHEET NO.
796	(105)-1	FORD	25	10
STA.		TO STA.		
FED. ROAD DIST. NO.		ILLINOIS FED. AID PROJECT		

LEGEND

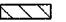







-  TEMP HMA BSE CSE WIDENING 8"
-  DRUM WITH STEADY BURN LIGHT
-  TRAFFIC SIGNALS W/ BACKPLATE
-  MICROWAVE DETECTOR
-  SIGN
-  TYPE III BARRICADE WITH FLASHING LIGHTS
-  IMPACT ATTENUATORS, TEMPORARY (NON-REDIRECTIVE) TEST LEVEL 3
-  WORK AREA

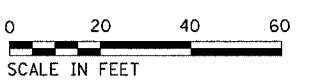
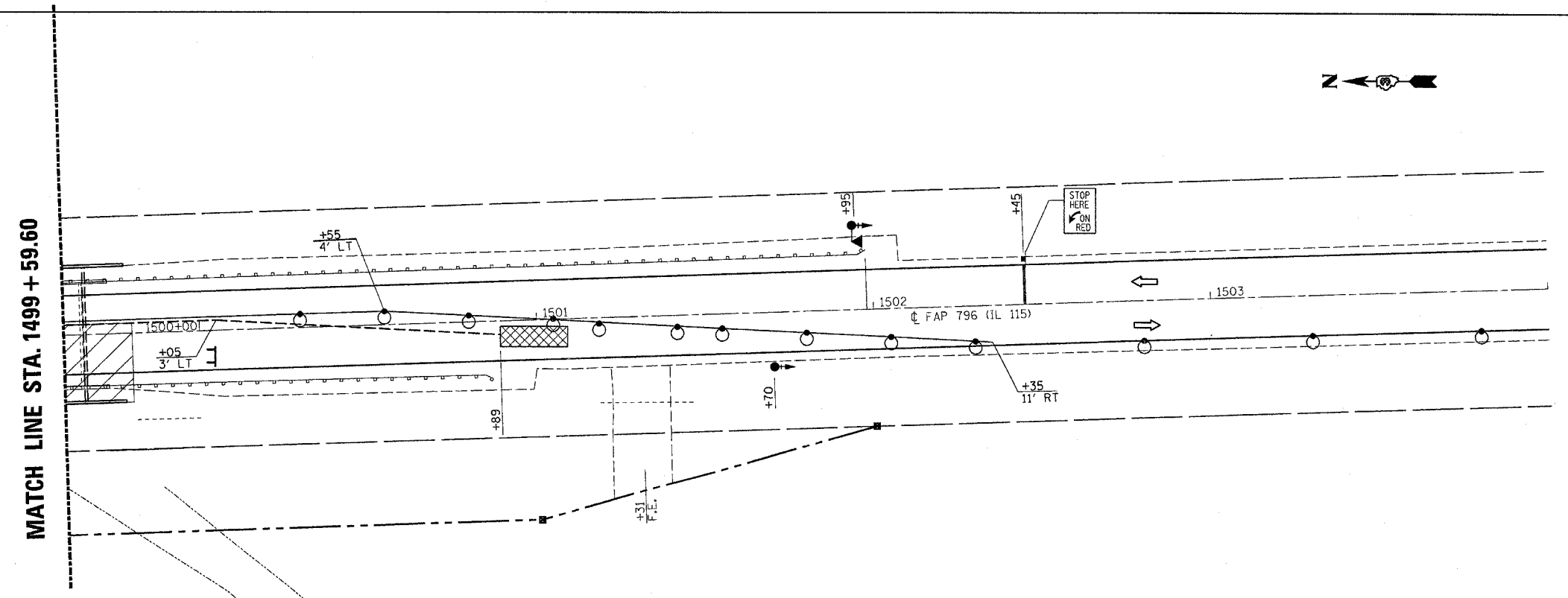
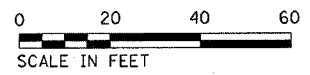
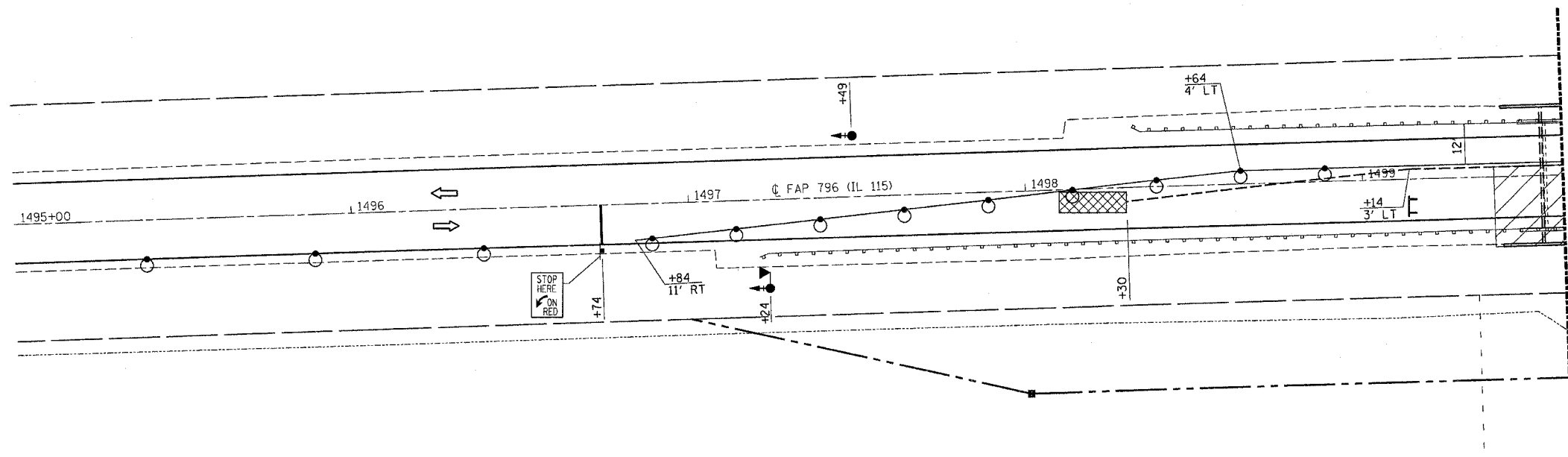


Oct 22, 2007 - 08:07:52 AM
c:\p\proj\ect\1\ep03206\sheet10.dgn

F.A.P. RTE.	SECTION	COUNTY	TOTAL SHEETS	SHEET NO.
796	(105)I-1	FORD	25	11
STA.		TO STA.		
FED. ROAD DIST. NO.		ILLINOIS FED. AID PROJECT		

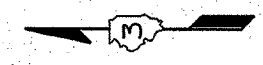
LEGEND

-  TEMP HMA BSE CSE WIDENING 8"
-  DRUM WITH STEADY BURN LIGHT
-  TRAFFIC SIGNALS W/ BACKPLATE
-  MICROWAVE DETECTOR
-  SIGN
-  TYPE III BARRICADE WITH FLASHING LIGHTS
-  IMPACT ATTENUATORS, TEMPORARY (NON-REDIRECTIVE) TEST LEVEL 3
-  WORK AREA



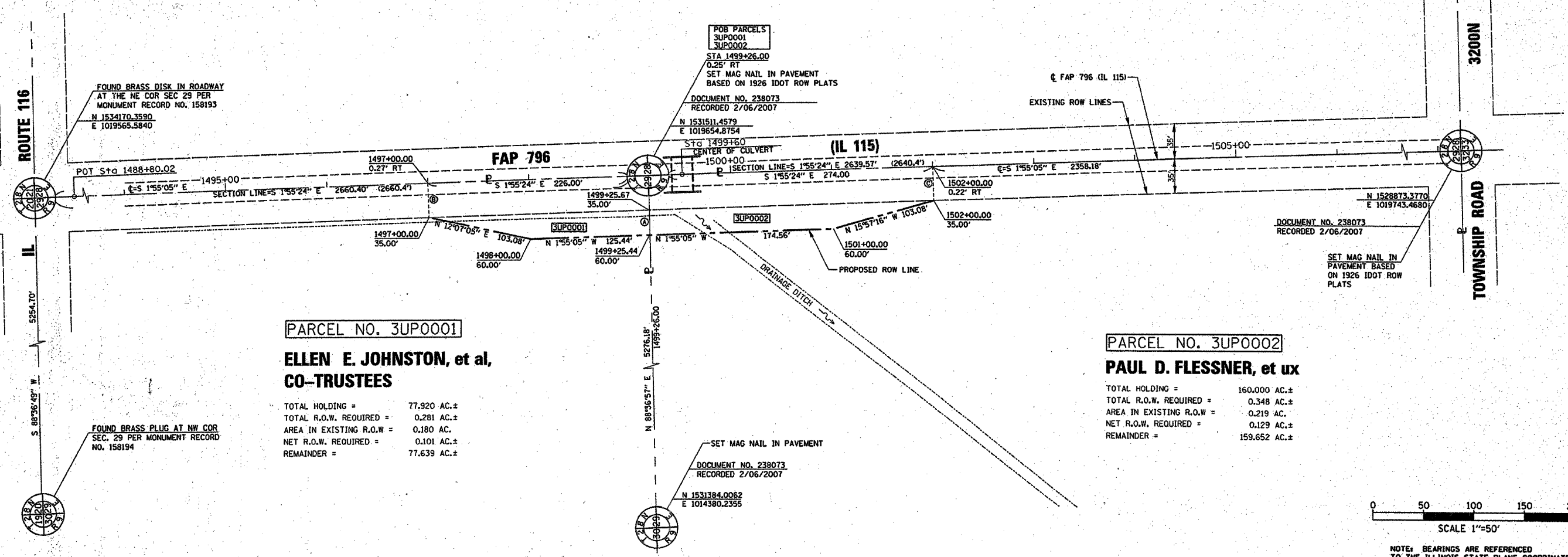
Oct 22, 2007 - 08:07:39 AM
c:\pro\sect\ep03206\sheet5.dgn

SECTION 28, T. 28 N., R. 9 E., OF THE 3RD P.M.



LINE TABLE

Ⓐ	S 88°36'57" W 59.76'
Ⓑ	N 88°04'55" E 34.73'
Ⓒ	S 88°04'55" W 34.78'



PARCEL NO. 3UP0001
ELLEN E. JOHNSTON, et al,
CO-TRUSTEES

TOTAL HOLDING =	77.920 AC.±
TOTAL R.O.W. REQUIRED =	0.281 AC.±
AREA IN EXISTING R.O.W =	0.180 AC.
NET R.O.W. REQUIRED =	0.101 AC.±
REMAINDER =	77.639 AC.±

PARCEL NO. 3UP0002
PAUL D. FLESSNER, et ux

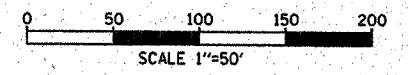
TOTAL HOLDING =	160.000 AC.±
TOTAL R.O.W. REQUIRED =	0.348 AC.±
AREA IN EXISTING R.O.W =	0.219 AC.
NET R.O.W. REQUIRED =	0.129 AC.±
REMAINDER =	159.652 AC.±

I, RICHARD L. ANDERSON, HEREBY CERTIFY THAT I AM A PROFESSIONAL LAND SURVEYOR OF THE STATE OF ILLINOIS, THAT THE SURVEY OF ILLINOIS FAP 796 (ILLINOIS 115) WAS MADE UNDER MY DIRECTION, AND THAT THE SURVEY IS TRUE AND COMPLETE AS SHOWN TO THE BEST OF MY KNOWLEDGE AND BELIEF, THAT ALL MONUMENTS AND MARKS ARE OF THE CHARACTER AND OCCUPY THE POSITION SHOWN THEREON, AND ARE SUFFICIENT TO ENABLE THE SURVEY TO BE RETRACED, THIS PROFESSIONAL SERVICE CONFORMS TO THE CURRENT ILLINOIS MINIMUM STANDARDS FOR A BOUNDARY SURVEY.

DATED 2-28-2007
 BY Richard L. Anderson
 RICHARD L. ANDERSON
 ILLINOIS PROFESSIONAL LAND SURVEYOR NO. 35-3049
 LICENSE EXPIRES NOVEMBER 30, 2008



SECTION 29, T. 28 N., R. 9 E., OF THE 3RD P.M.



NOTE: BEARINGS ARE REFERENCED TO THE ILLINOIS STATE PLANE COORDINATE SYSTEM EAST ZONE NAD 83.

RIGHT OF WAY PLANS
 ROUTE FAP 796 (IL 115)
 SECTION (105)1-1
 PROJECT
 COUNTY FORD
 JOB NO. R-93-007-07
 STA 1497+00 TO STA 1502+00
 SCALE 1" : 50'
 SHEET NO. 1 OF 1

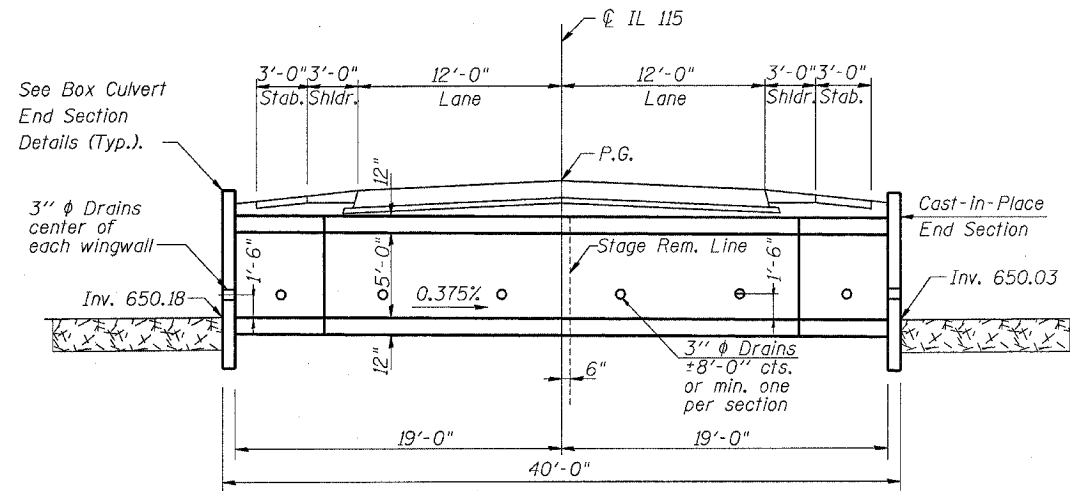
F.A.P. RTE.	SECTION	COUNTY	TOTAL SHEETS	SHEET NO.
796	105I-1	FORD	25	13
FED. ROAD DIST. NO. ILLINOIS				

STATE OF ILLINOIS
DEPARTMENT OF TRANSPORTATION

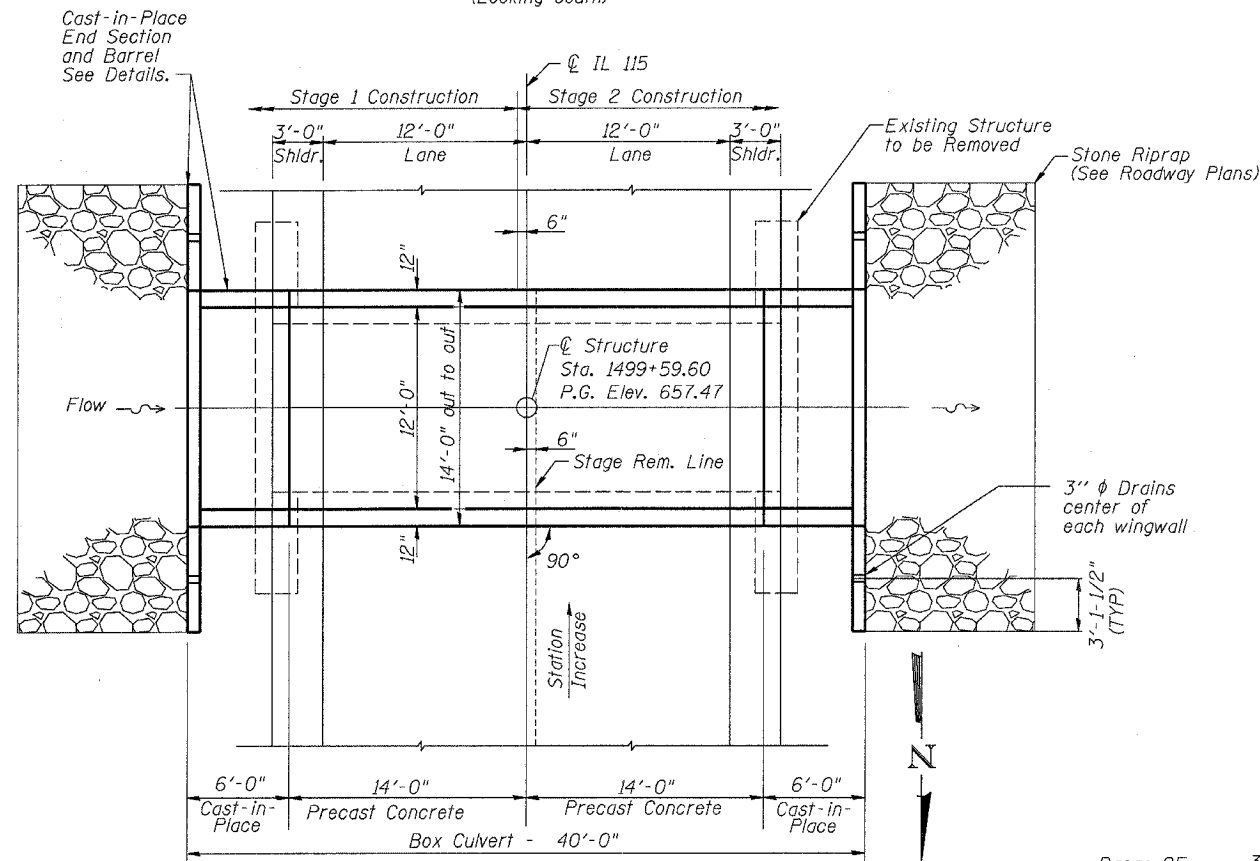
B.M.: Chiseled "X" on top of S.E. wingwall, Sta. 125+85.90, 17.6' H.
Elev. 674.52

Existing Structure: SN 027-2504 was originally constructed in 1928. The existing structure is a single 10' x 5' box culvert with wing walls parallel to IL 115. The structure measures 30' long. Staging shall be used during construction of the box culvert.

No salvage



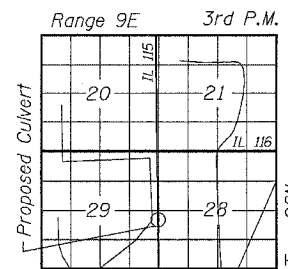
ELEVATION
(Looking south)



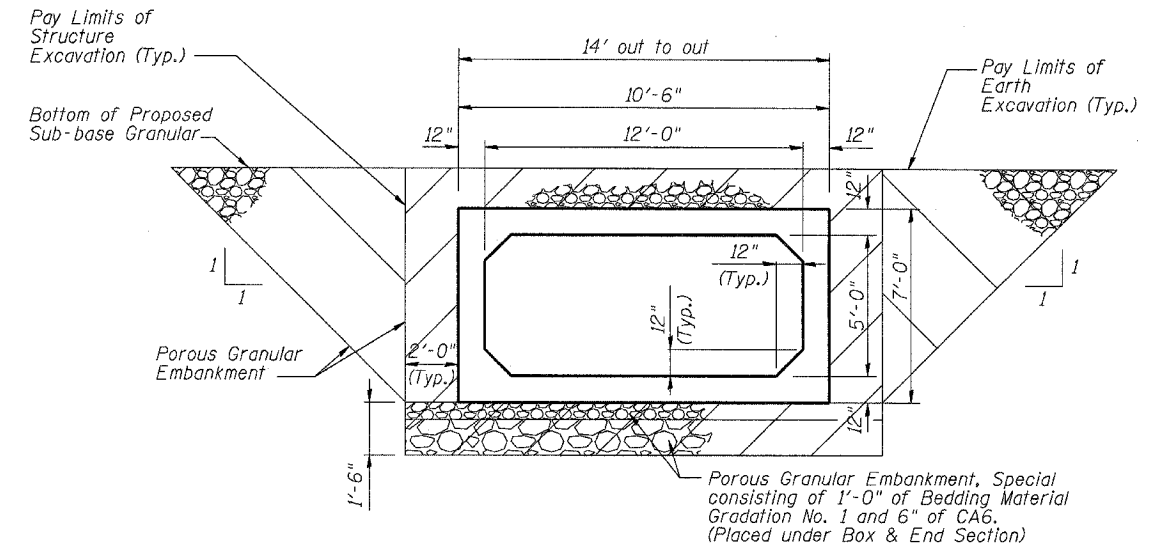
PLAN

WATERWAY INFORMATION

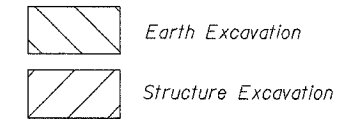
Flood	Freq. Yr.	Q C.F.S.	Opening Sq. Ft.		Nat. H.W.E.	Head - Ft.		Headwater El.	
			Exist.	Prop.		Exist.	Prop.	Exist.	Prop.
			50	60	652.6	0.5	0.4	653.1	653.0
Design	50	182	50	60	653.2	0.5	0.3	653.7	653.5
Base	100	214	50	60	654.7	0.5	0.3	655.2	655.0
Overtopping									
Max. Calc.	500	293	50	60	655.9	0.7	0.5	656.6	656.4



LOCATION SKETCH



SECTION THROUGH BARREL



GENERAL NOTES

- ① Precast Concrete Box Culvert sections shall conform to the requirements of Article 540.06 of the Standard Specifications and the applicable requirements of AASHTO M 273.
- ② Reinforcement bars shall conform to the requirements of ASTM A 706 Gr 60 (IL Modified). See Special Provisions.
- ③ Reinforcement bars designated (E) shall be epoxy coated.
- ④ Lifting holes shall be filled with concrete plugs and mastic after box sections are in place.

BILL OF MATERIAL

ITEM	UNIT	TOTAL
EARTH EXCAVATION	CU YD	73
POROUS GRANULAR EMBANKMENT	CU YD	89
POROUS GRANULAR EMBANKMENT, SPECIAL	CU YD	97
REINFORCEMENT BARS, EPOXY COATED	POUND	4552
REMOVAL OF EXISTING STRUCTURE	EACH	1
EXPANSION BOLTS 3/4 INCH	EACH	56
STRUCTURE EXCAVATION	CU YD	117
PRECAST CONCRETE BOX CULVERT 12' X 5' (M273)	FOOT	28
CONCRETE BOX CULVERTS	CU YD	26.4
SHEET WATERPROOFING MEMBRANE SYSTEM	SQ YD	118
TEMPORARY SOIL RETENTION SYSTEM	SQ FT	60

DESIGN SPECIFICATIONS

1996 AASHTO with 1997 thru 2002 Interims

LOADING HS20-44

Allow 50#/sq. ft. for future wearing surface.

Design Fill Height = <2 ft.

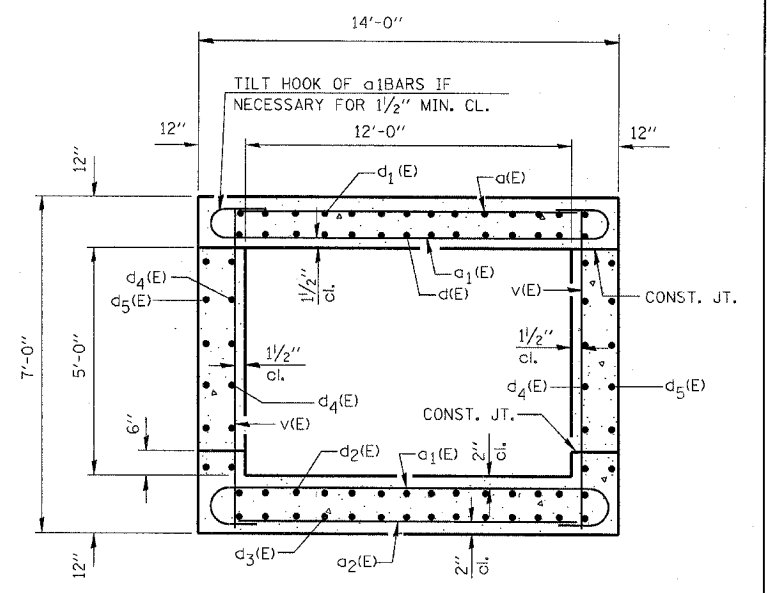
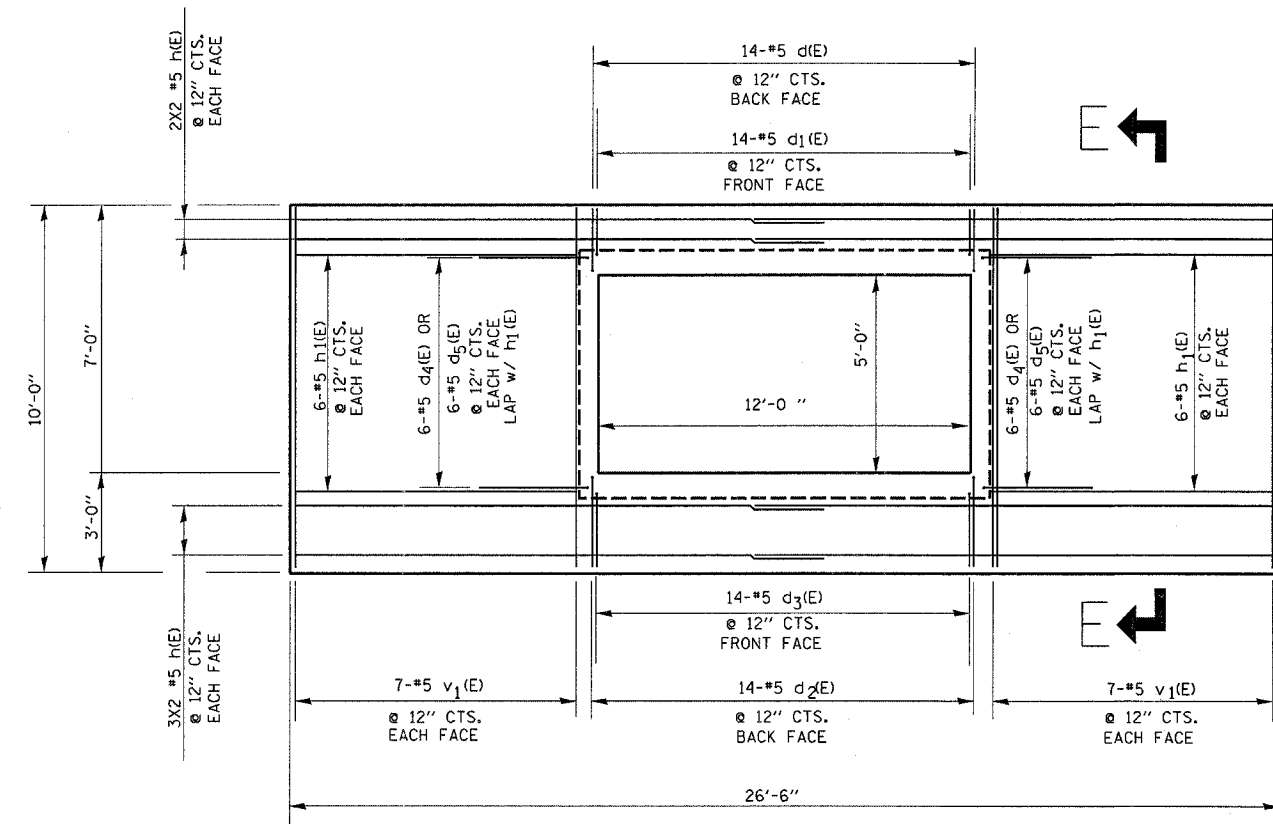
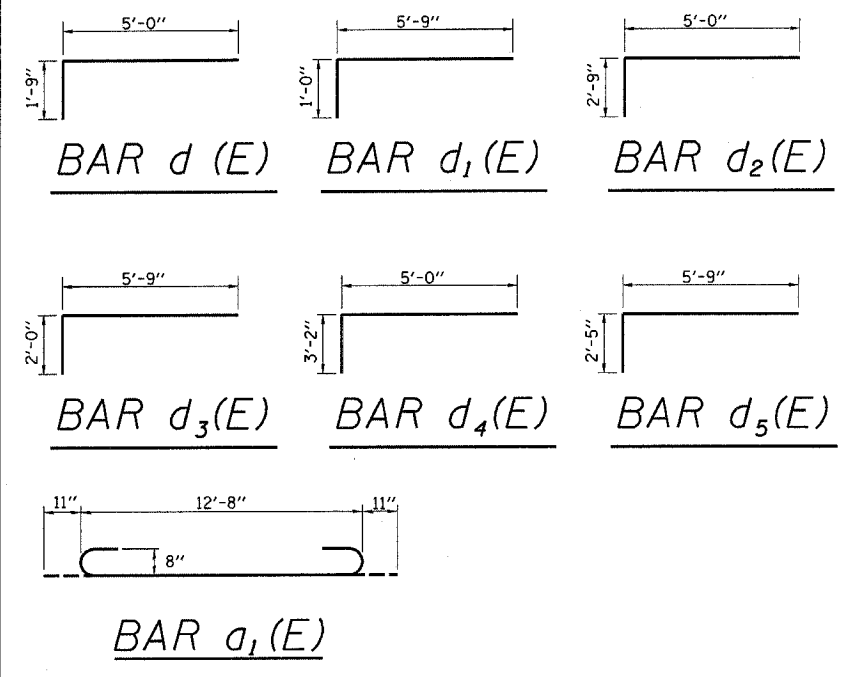
DESIGN STRESSES

Precast
f'c = 5,000 psi
fy = 65,000 psi (welded wire fabric)
Cast-In-Place
f'c = 3,500 psi
fy = 60,000 psi (reinforcement)

GENERAL PLAN
IL 115 OVER DRAINAGE DITCH
FAP ROUTE 796 - SECTION (105)I-1
FORD COUNTY
STATION 1499+59.60

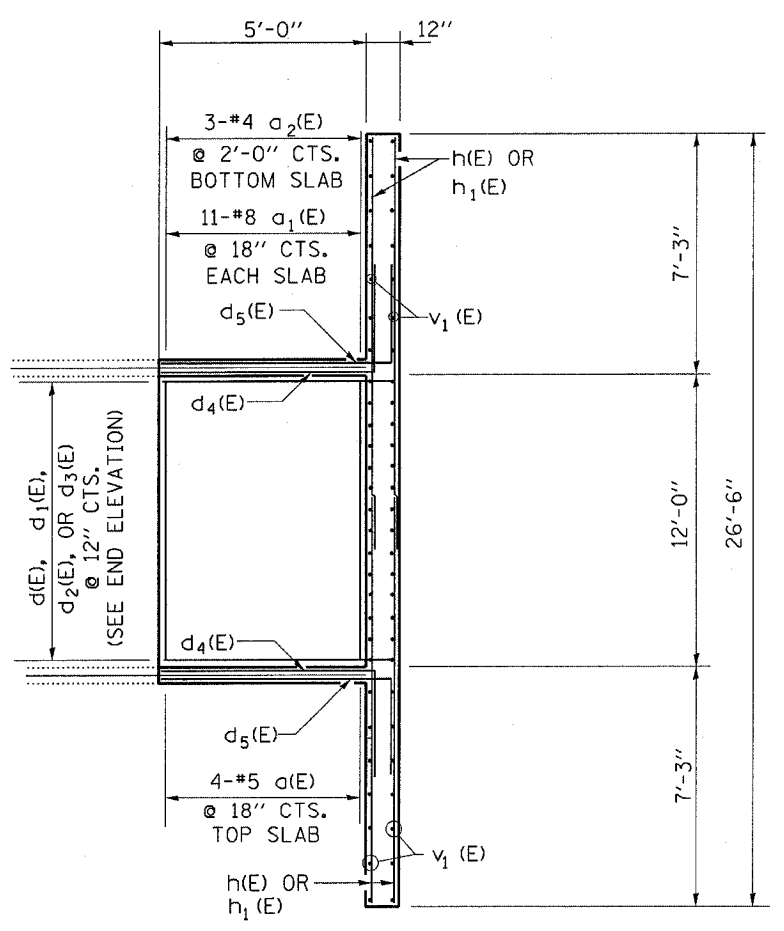
Rev.

F.A.P. RTE.	SECTION	COUNTY	TOTAL SHEETS	SHEET NO.
796	(105)1-1	FORD	25	14
FED. ROAD DIST. NO.		ILLINOIS		

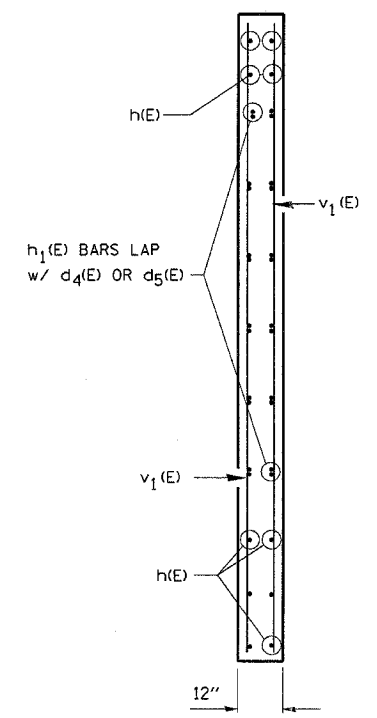


SECTION THRU BARREL

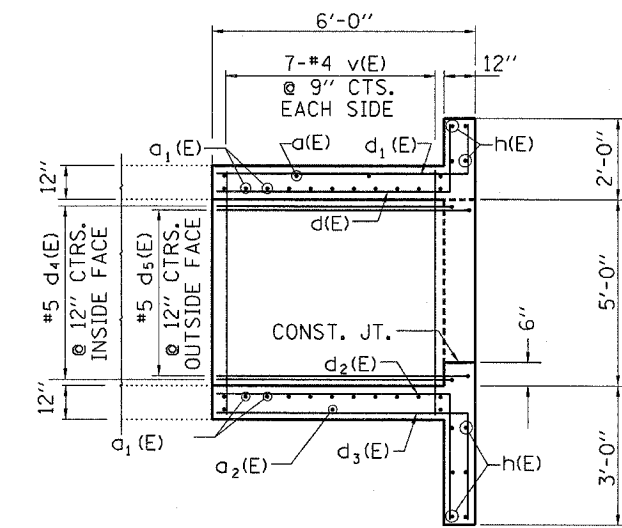
END ELEVATION



PLAN DOWNSTREAM



SECTION E-E



SIDE ELEVATION

BILL OF MATERIALS - EACH END				
BAR	NO.	SIZE	LENGTH (FT.)	SHAPE
$a(E)$	4	#5	12'-3"	—
$a(E)$	22	#8	14'-6"	U
$a(E)$	3	#4	12'-3"	—
$d(E)$	14	#8	6'-9"	U
$d(E)$	14	#5	6'-9"	U
$d(E)$	14	#5	7'-9"	U
$d(E)$	14	#5	7'-9"	U
$d(E)$	12	#5	8'-2"	U
$d(E)$	12	#5	8'-2"	U
$h(E)$	20	#5	14'-2"	—
$h(E)$	24	#5	6'-0"	—
$v(E)$	14	#4	6'-9"	—
$v_1(E)$	28	#5	7'-3"	—
CONCRETE BOX CULVERT			CU YD	13.2
REINFORCEMENT BARS, EPOXY COATED			POUND	2276

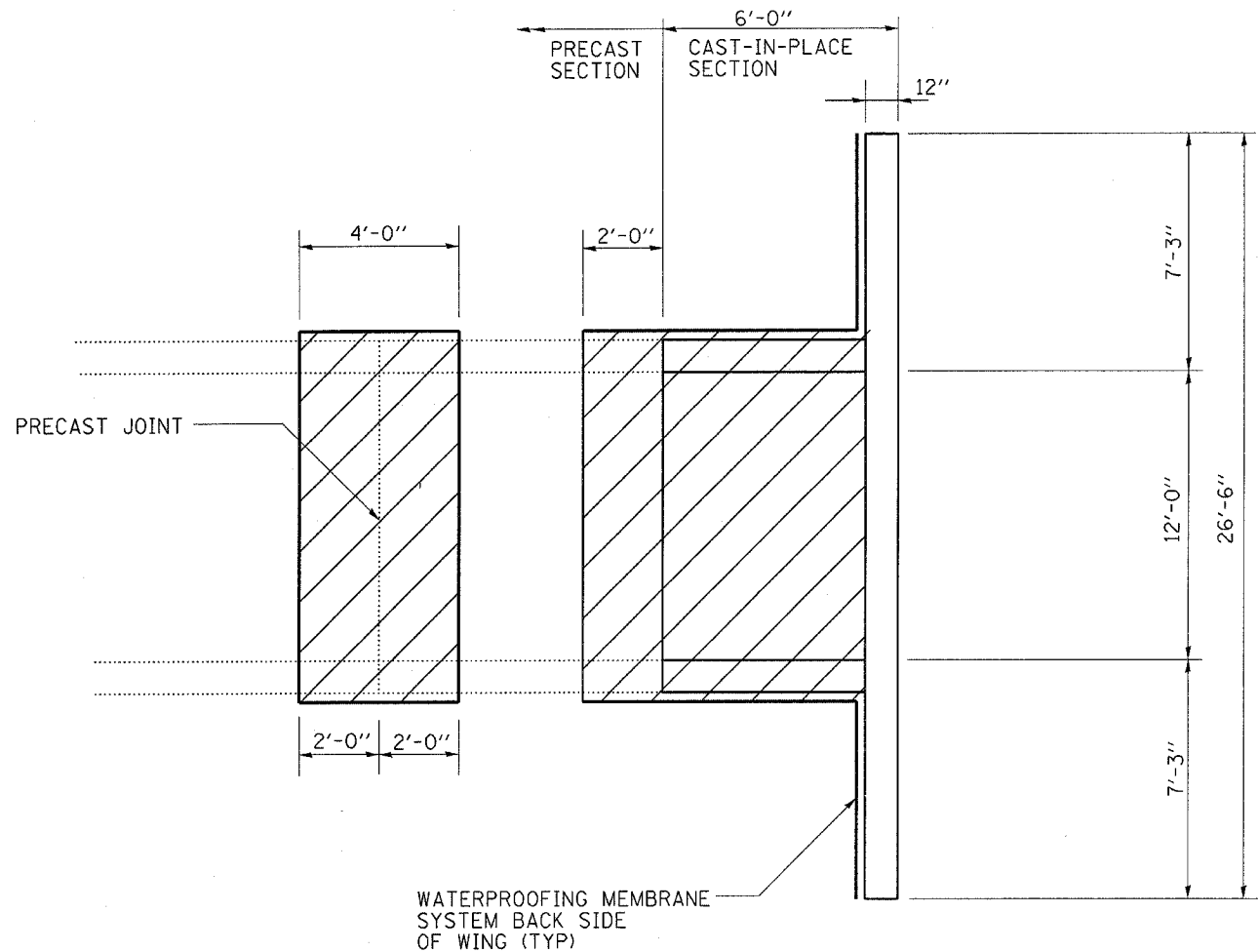
REINFORCEMENT BARS DESIGNATED (E) SHALL BE EPOXY COATED

REVISIONS	
NAME	DATE

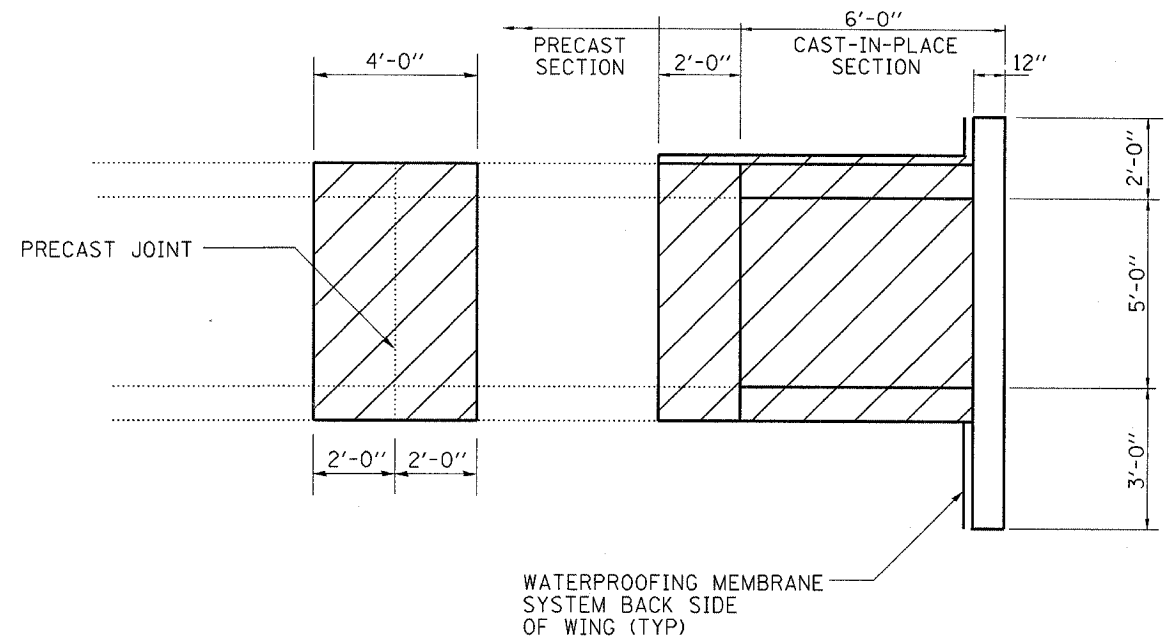
ILLINOIS DEPARTMENT OF TRANSPORTATION
BOX CULVERT END SECTIONS
 FAP 796 (IL 115) SECTION (105)1-1
 FORD COUNTY
 STA. 1499+59.60
 S.N. 027-2550

NOTE: DOWNSTREAM END SHOWN, UPSTREAM SYMMETRICAL BY 180°

F.A.P. RTE.	SECTION	COUNTY	TOTAL SHEETS	SHEET NO.
796	(105)I-1	FORD	25	15
FED. ROAD DIST. NO.		ILLINOIS		



PLAN



SIDE ELEVATION

BILL OF MATERIAL
TOTAL - BOTH WINGS

SHEET WATERPROOFING	SQ. YD.	37
MEMBRANE SYSTEM		

BILL OF MATERIAL
BOX CULVERT

SHEET WATERPROOFING	SQ. YD.	81
MEMBRANE SYSTEM		

NOTES:

THE EXPOSED SURFACES AS INDICATED SHALL BE PROTECTED BY THE WATERPROOFING MEMBRANE AS PER THE MANUFACTURER'S RECOMENDATIONS.

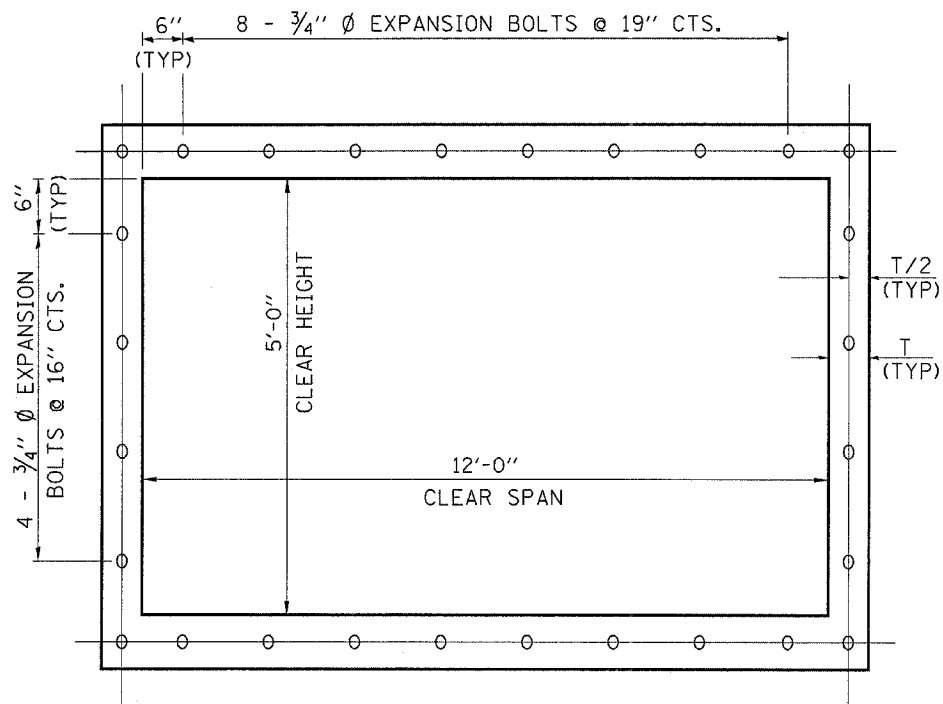
A MANUFACTURER'S REPRESENTATIVE SHALL BE ON SITE DURING THE INSTALLATION OF THE WATERPROOFING MEMBRANE TO PROVIDE TECHNICAL SUPPORT WHEN REQUIRED. ALL COST INCURRED DUE TO THE ON-SITE REPRESENTATIVE SHALL NOT BE PAID FOR SEPARATELY BUT SHALL BE INCLUDED IN THE UNIT COST OF THE WATERPROOFING MEMBRANE WORK.

THE CONTRACTOR SHALL INSTALL THE WATERPROOFING MEMBRANE ACCORDING TO THE MANUFACTURER'S RECOMMENDATIONS, PLAN DETAILS AND AS DIRECTED BY THE ENGINEER.

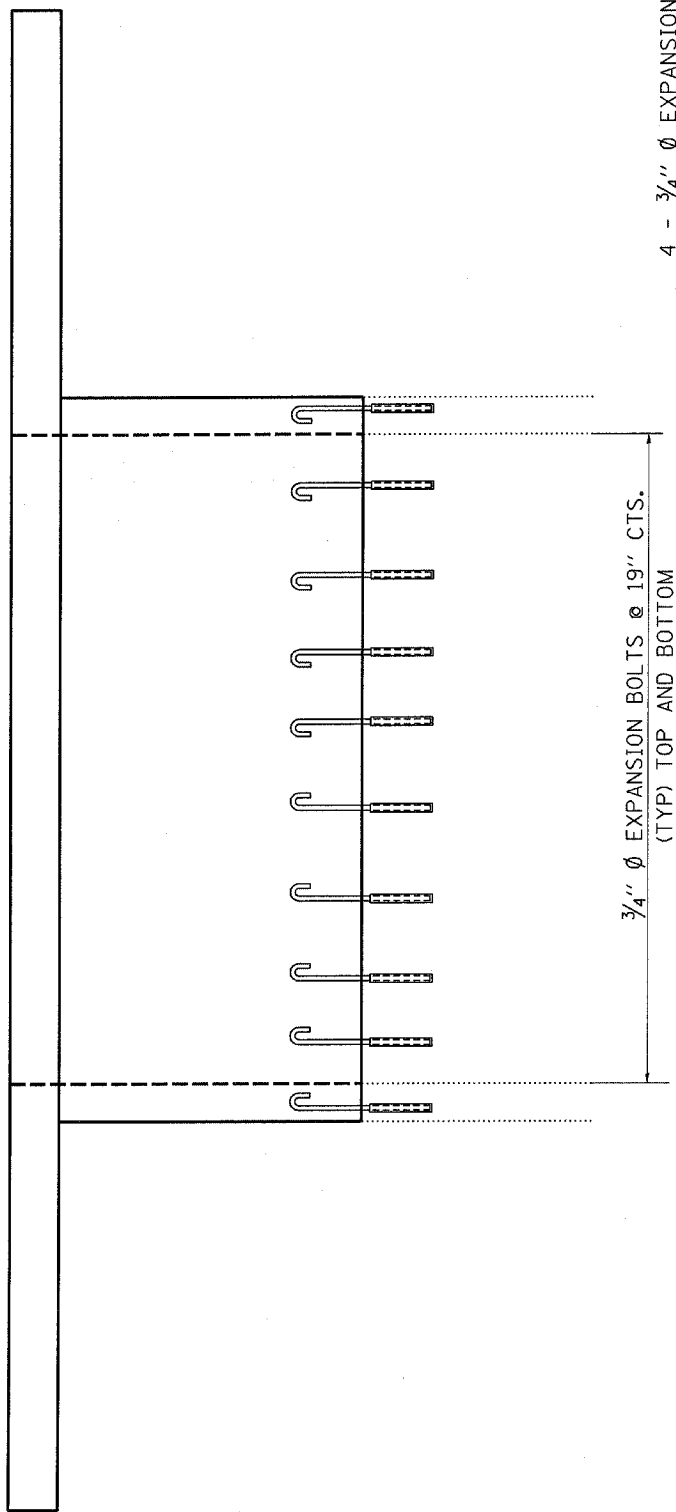
REVISIONS	
NAME	DATE

ILLINOIS DEPARTMENT OF TRANSPORTATION
SHEET WATERPROOFING
MEMBRANE DETAILS
FAP 796 (IL 115) SECTION (105)I-1
FORD COUNTY
STA. 1499+59.60
S.N. 027-2550

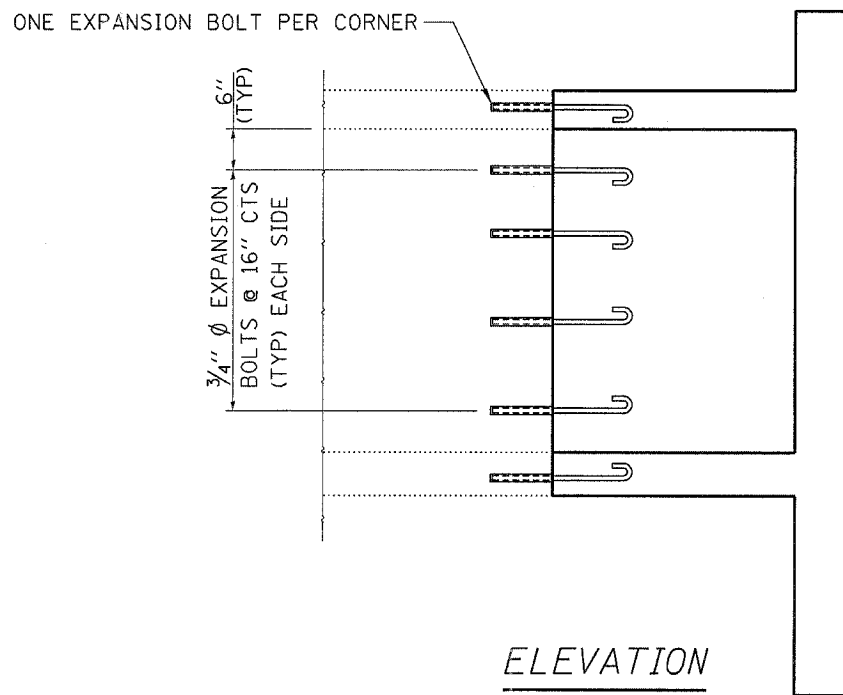
F.A.P. RTE.	SECTION	COUNTY	TOTAL SHEETS	SHEET NO.
796	(105)I-1	FORD	25	16
FED. ROAD DIST. NO.		ILLINOIS		



SECTION THRU BOX



PLAN



ELEVATION

NOTE: DOWNSTREAM END SHOWN, UPSTREAM END SIMILIAR

CLEAR SPAN OR CLEAR HEIGHT	NO. OF 3/4" Ø EXP. BOLTS REQ'D PER SIDE			
	BARREL RECONST. ≤ 15'		BARREL RECONST. > 15'	
FEET	NO.	SPACING	NO.	SPACING
2.0	**	**	**	**
2.5	2	18"	2	18"
3.0	2	24"	2	24"
4.0	3	18"	3	18"
5.0	4	16"	3	24"
6.0	5	15"	4	20"
7.0	5	18"	4	24"
8.0	6	17"	5	21"
9.0	6	19"	5	24"
10.0	7	18"	6	21"
11.0	8	17"	6	24"
12.0	8	19"	7	22"

NOTES:

EXPANSION BOLTS SHALL BE 3/4" Ø HOOKED BOLTS. HOOKED BOLTS SHALL EXTEND A MINIMUM OF 9" INTO NEW CONCRETE.

**USE MINIMUM ONE (1) EXPANSION BOLT AT EACH CORNER.

BILL OF MATERIAL
UPSTREAM

EXPANSION BOLTS 3/4"	EACH	28
----------------------	------	----

BILL OF MATERIAL
DOWNSTREAM

EXPANSION BOLTS 3/4"	EACH	28
----------------------	------	----

REVISIONS	
NAME	DATE

ILLINOIS DEPARTMENT OF TRANSPORTATION
EXPANSION BOLT DETAILS

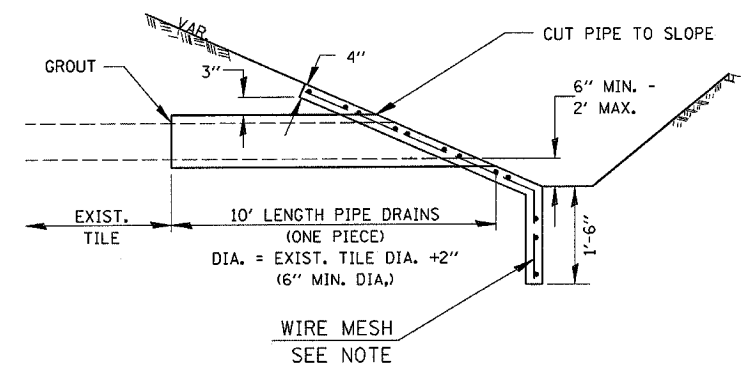
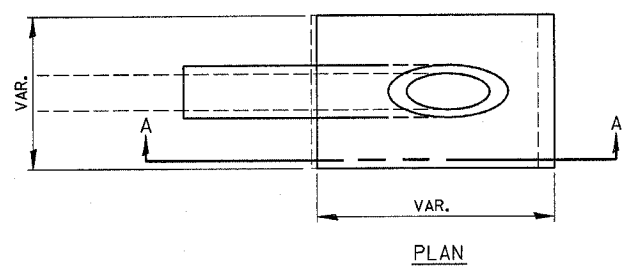
FAP 796 (IL 115) SECTION (105)I-1
FORD COUNTY
STA. 1499+59.60
S.N. 027-2550

NOTE: UPSTREAM END SHOWN, DOWNSTREAM END SIMILIAR

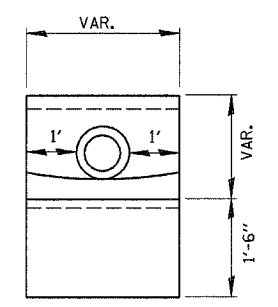
F.A.P. RTE.	SECTION	COUNTY	TOTAL SHEETS	SHEET NO.
796	(105)1-1	FORD	25	18
STA.		TO STA.		
FED. ROAD DIST. NO. .		ILLINOIS FED. AID PROJECT		

NOTES

1. ANY FIELD TILE OUTLET INTO A DITCH SHALL HAVE A HEADWALL BUILT IN ACCORDANCE WITH THIS DETAIL.
2. COST OF FURNISHING AND INSTALLING WIRE MESH SHALL BE INCLUDED IN THE CONTRACT UNIT PRICE PER CUBIC YARD FOR MISCELLANEOUS CONCRETE. WIRE MESH TO WEIGH NOT LESS THAN 58# PER 100 SQ. FT.

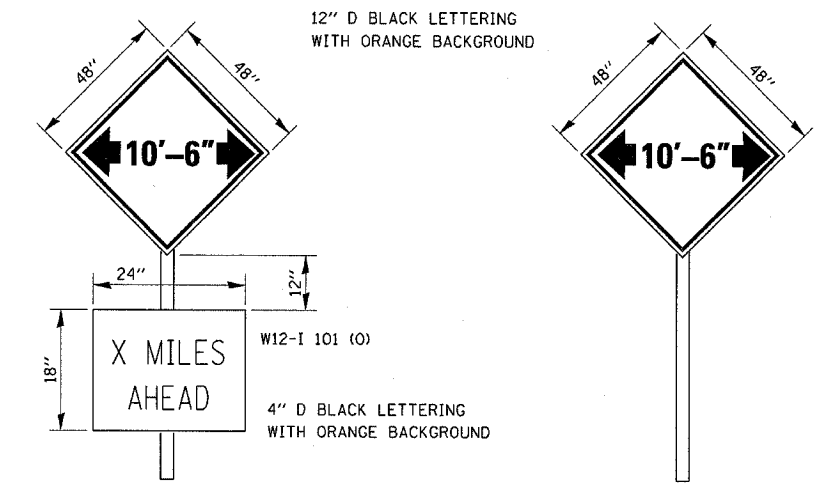


SECTION A-A



END VIEW

PIPE DRAINS & CONCRETE HEADWALLS



TO BE POST MOUNTED AS SHOWN ELSEWHERE IN THE PLANS.

THE ENGINEER WILL NOTIFY DISTRICT 3 BUREAU OF OPERATIONS 14 CALENDAR DAYS PRIOR TO INSTALLING ANY TRAFFIC CONTROL DEVICES THAT WILL RESTRICT THE PAVEMENT WIDTH.

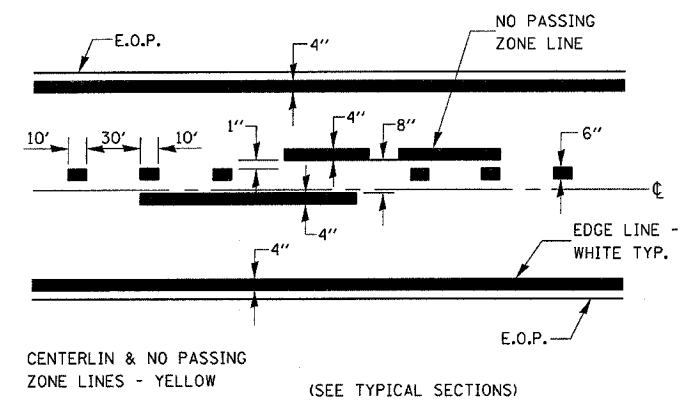
THE CONTRACTOR SHALL BE RESPONSIBLE FOR COORDINATING WITH THE ENGINEER TO MEET THIS REQUIREMENT.

COST OF SUPPLYING, INSTALLING, MAINTAINING AND REMOVING WIDTH RESTRICTION SIGNS SHALL BE INCLUDED IN THE COST OF THE TRAFFIC CONTROL AND PROTECTION PAY ITEMS.

LOCATIONS

SB IL 115 AT IL 116, 0.5 MILES AHEAD
 NB IL 115 AT US 24, 9 MILES AHEAD

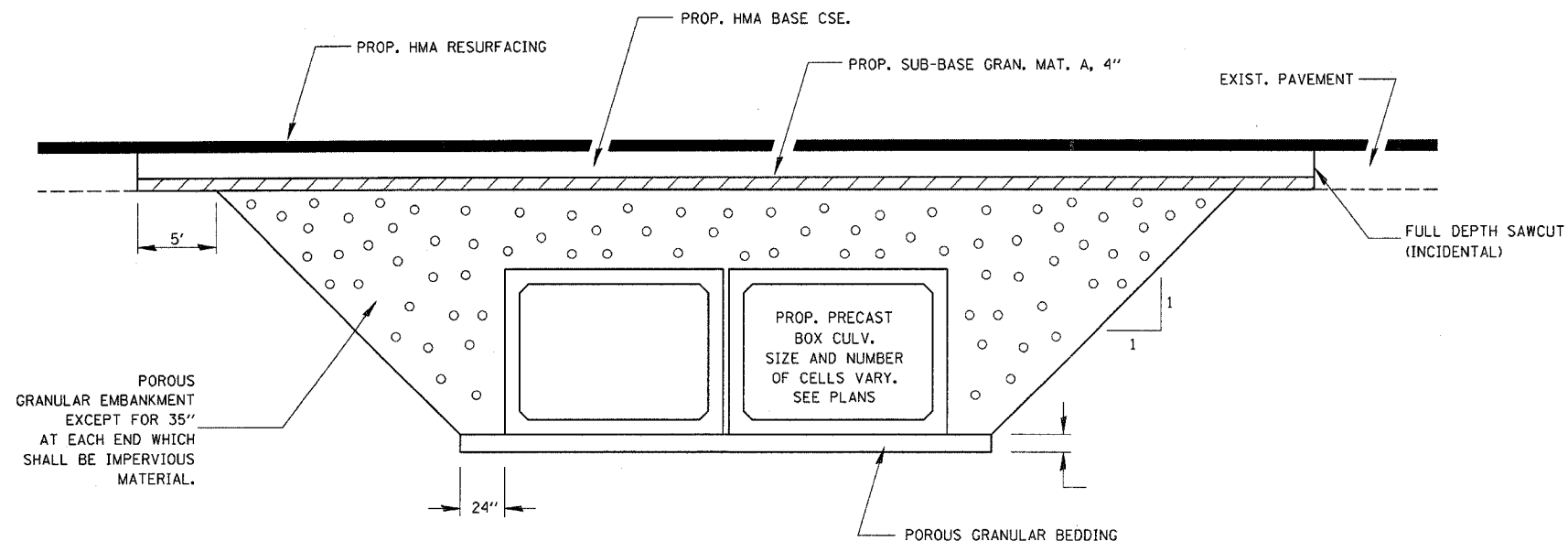
WIDTH RESTRICTION SIGNING DETAILS



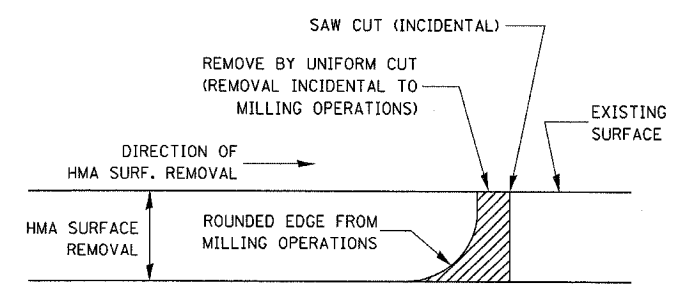
PAVEMENT MARKING

Oct 22, 2007 - 07:47:10 AM c:\pcc\lects\ep03206\sheet5.dgn

F.A.P. RTE.	SECTION	COUNTY	TOTAL SHEETS	SHEET NO.
796	(105)1-1	FORD	25	19
STA.		TO STA.		
FED. ROAD DIST. NO.		ILLINOIS FED. AID PROJECT		

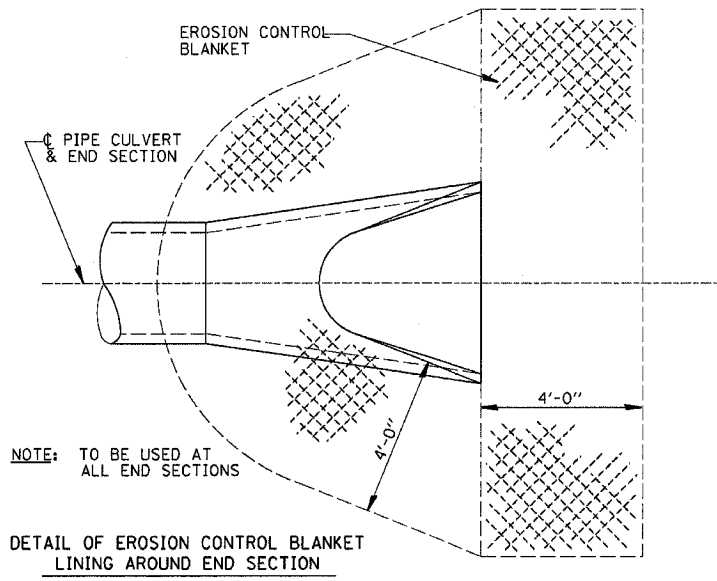


SECTION THROUGH PRECAST BOX CULVERT



NOTE:
WHEN MILLING OPERATIONS PRODUCE A ROUNDED EDGE, THEN A SAW CUT SHALL BE USED TO MANUFACTURE A PERPENDICULAR EDGE AS SHOWN IN THE DETAIL. THE ENGINEER SHALL BE THE SOLE JUDGE CONCERNING THE USE OF THIS DETAIL.

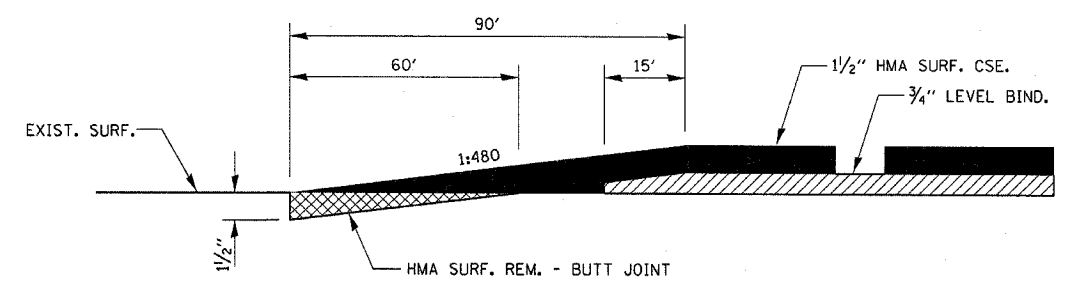
HMA DETAIL AT BUTT JOINTS



NOTE: TO BE USED AT ALL END SECTIONS

DETAIL OF EROSION CONTROL BLANKET LINING AROUND END SECTION

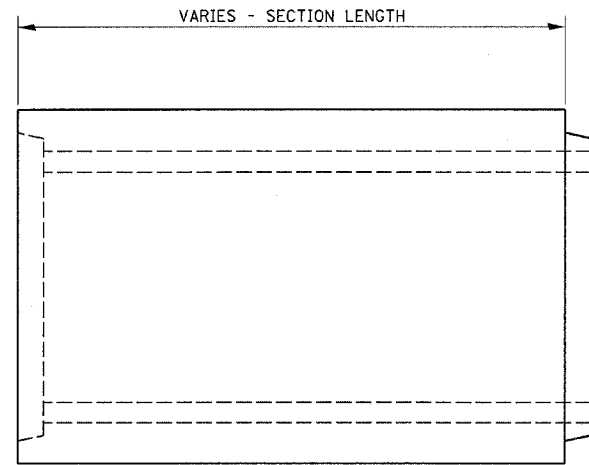
NOTE: PRC FLARED END SECTION SHOWN. TREATMENT SAME FOR OTHER END SECTIONS.



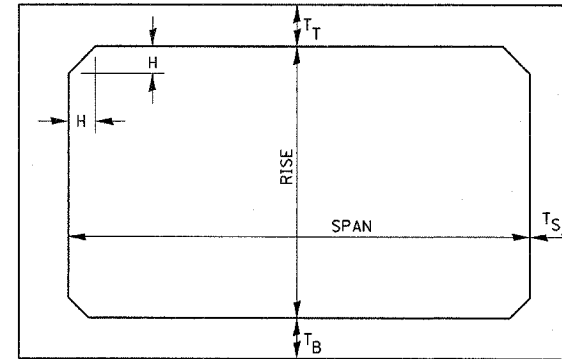
BUTT JOINT DETAIL

Oct 22, 2007 - 08:04:05 AM c:\projects\ep03206\sheet.s.dgn

F.A.P. RTE.	SECTION	COUNTY	TOTAL SHEETS	SHEET NO.
796	(105)-1	FORD	25	20
STA.		TO STA.		
FED. ROAD DIST. NO.		ILLINOIS FED. AID PROJECT		



ELEVATION



NOTE: THE HAUNCH DIMENSION H, IS EQUAL TO THE WALL THICKNESS T_S.

TYPICAL BOX SECTION

SPAN, FEET	T _T , INCHES		T _B , INCHES		T _S , INCHES	
	M 259	M 273	M 259	M 273	M 259	M 273
3	4	7	4	6	4	4
4	5	7 1/2	5	6	5	5
5	6	8	6	7	6	6
6	7	8	7	7	7	7
7	8	8	8	8	8	8
8	8	8	8	8	8	8
9	9	9	9	9	9	9
10	10	10	10	10	10	10
11	11	11	11	11	11	11
12	12	12	12	12	12	12

TYPICAL THICKNESSES

GENERAL NOTES:

MINIMUM COVER FOR BOX
CULVERTS SHALL BE 6".

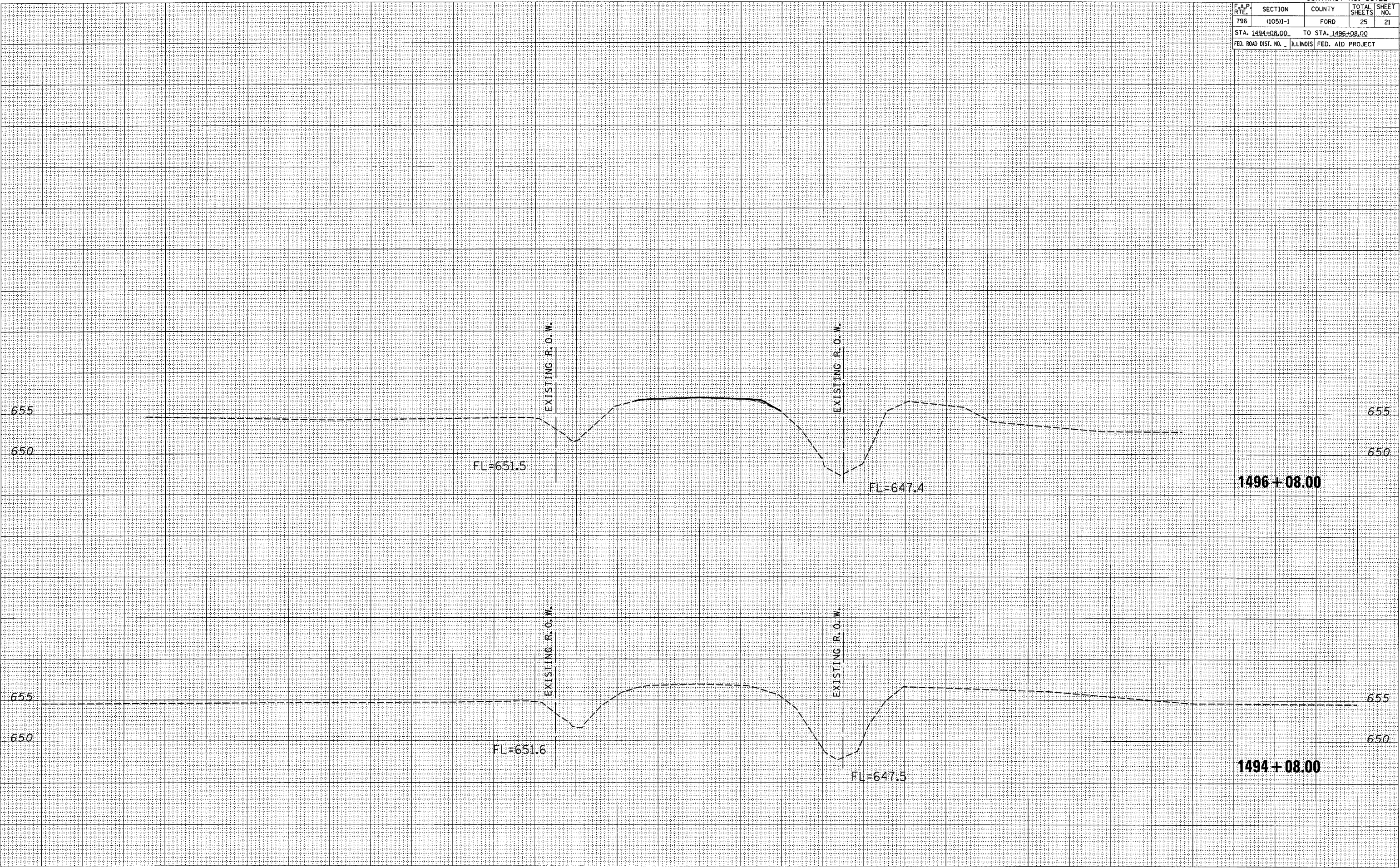
PRECAST CONCRETE BOX SECTION

F.A.P. RTE.	SECTION	COUNTY	TOTAL SHEETS	SHEET NO.
796	(105)-1	FORD	25	21
STA. 1494+08.00		TO STA. 1496+08.00		
FED. ROAD DIST. NO.		ILLINOIS FED. AID PROJECT		

FINAL SURVEY	BY	DATE
NOTE BOOK NO.		
AREAS CHECKED		

ORIGINAL SURVEY	BY	DATE
NOTE BOOK NO.		
AREAS CHECKED		

Oct 22, 2007 - 08:02:41 AM
c:\p0\ecsv\p03206\sscb7s.dgn

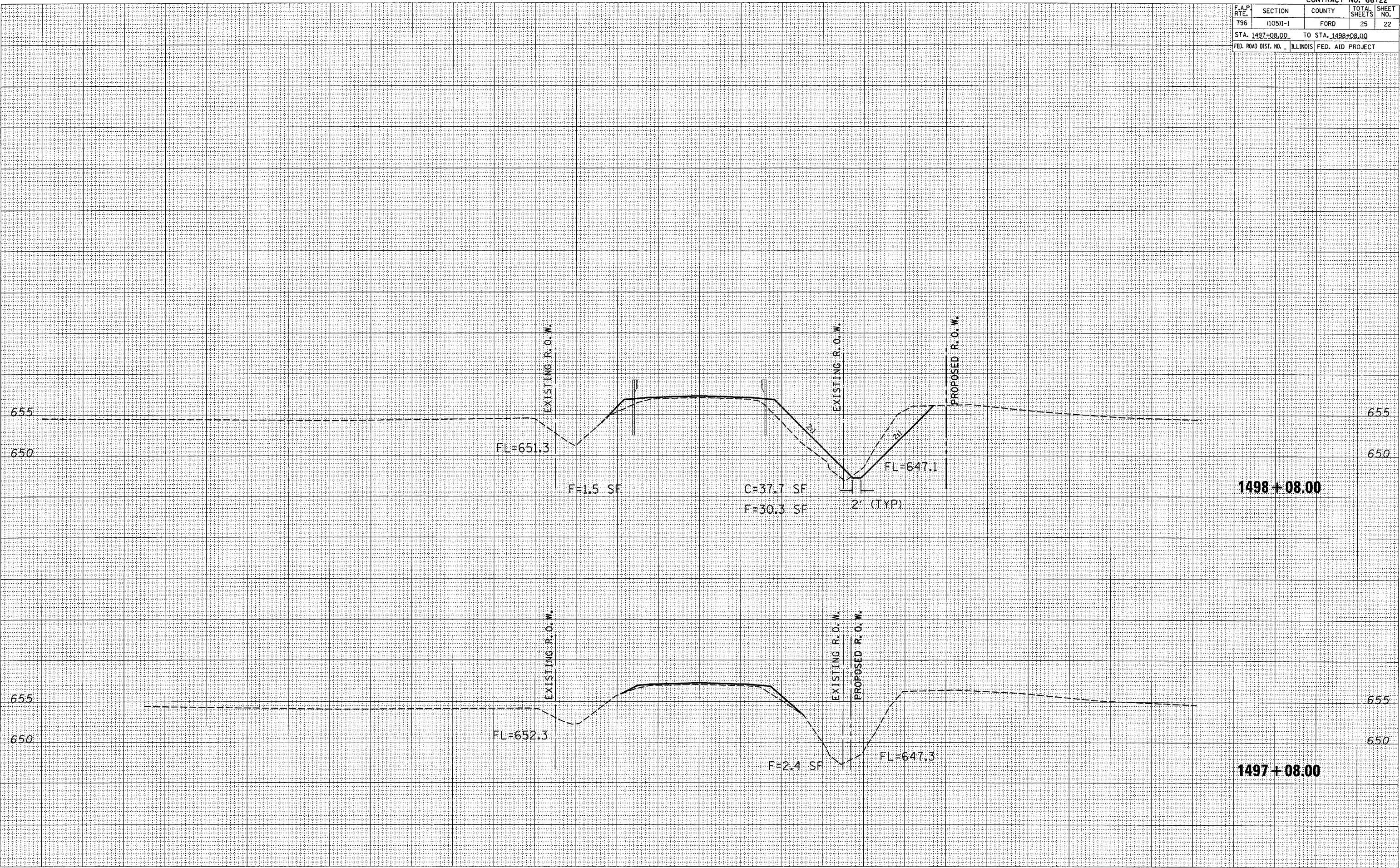


CONTRACT NO. 66722	
F.A.P. RTE.	SECTION
796	(105)-1
COUNTY	TOTAL SHEETS
FORD	25
SHEET NO.	22
STA. 1497+08.00 TO STA. 1498+08.00	
ILLINOIS FED. AID PROJECT	

FINAL SURVEY	BY	DATE
NO. _____		
NO. _____		
NO. _____		
NO. _____		
NO. _____		

ORIGINAL SURVEY	BY	DATE
NO. _____		
NO. _____		
NO. _____		
NO. _____		
NO. _____		

Oct 22, 2007 - 09:02:27 AM
c:\proj\sect\ep03206\sect15.dgn



1498+08.00

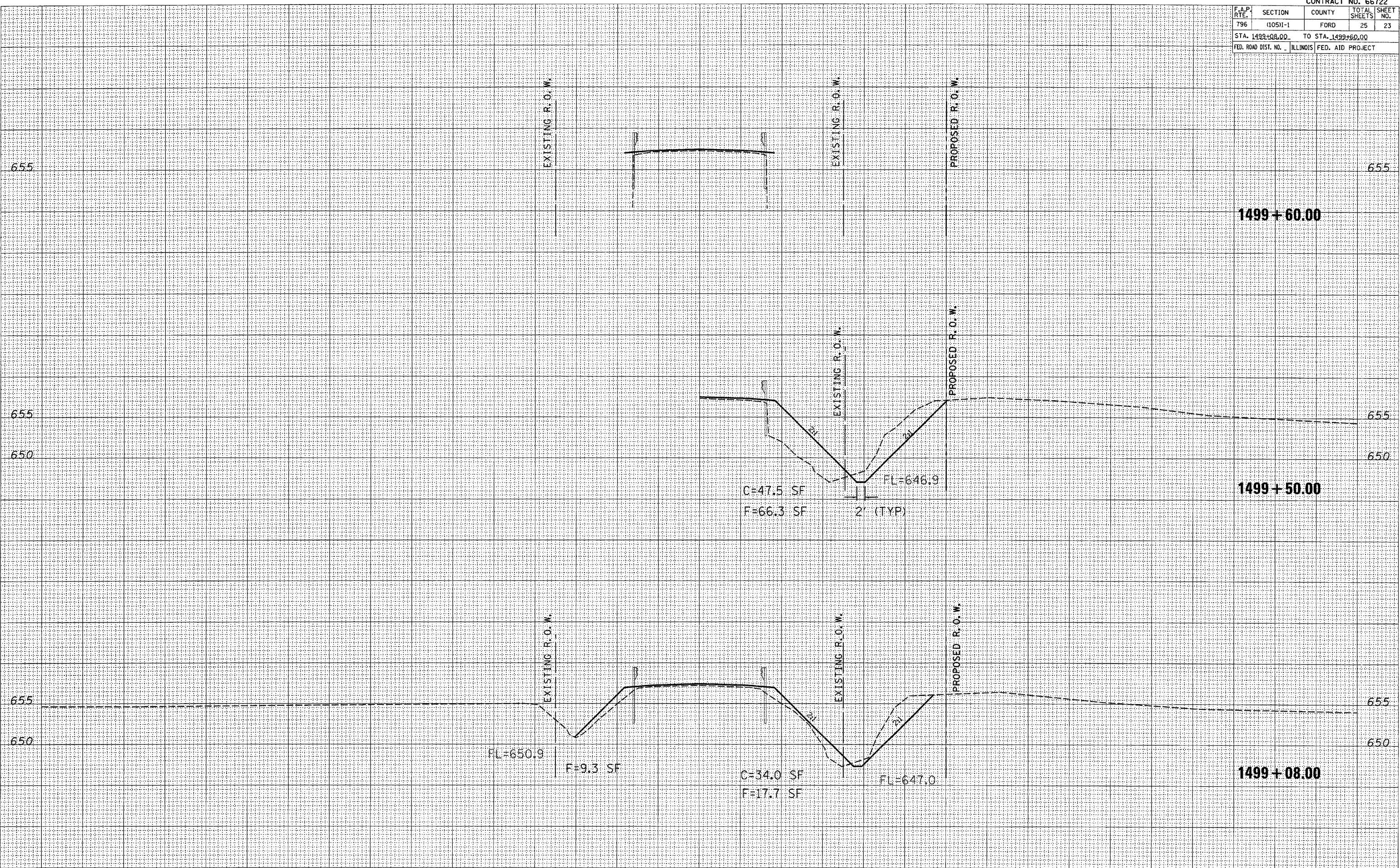
1497+08.00

F.A.P. RTE.	SECTION	COUNTY	TOTAL SHEETS	SHEET NO.
796	(105)-1	FORD	25	23
STA. 1499+08.00		TO STA. 1499+60.00		
FED. ROAD DIST. NO.		ILLINOIS FED. AID PROJECT		

FINAL SURVEY	BY	DATE
SURVEYED		
PLANNED		
NOTE BOOK		
NO.		

ORIGINAL SURVEY	BY	DATE
SURVEYED		
PLANNED		
NOTE BOOK		
NO.		

Oct 22, 2007 - 08:02:15 AM
c:\p\projects\ep023206\assnfrs.dgn



C=47.5 SF
F=66.3 SF
2' (TYP)
FL=646.9

FL=650.9
F=9.3 SF
C=34.0 SF
F=17.7 SF
FL=647.0

1499+60.00

1499+50.00

1499+08.00

F.A.P. RTE.	SECTION	COUNTY	TOTAL SHEETS	SHEET NO.
796	(105)-1	FORD	25	24
STA. 1499+90.00		TO STA. 1500+08.00		
FED. ROAD DIST. NO. ILLINOIS FED. AID PROJECT				

FINAL SURVEY	BY	DATE
SURVEYED		
PLOTTED		
NOTE BOOK		
NO.		

ORIGINAL SURVEY	BY	DATE
SURVEYED		
PLOTTED		
NOTE BOOK		
NO.		

Oct 22, 2007 - 08:02:06 AM
 c:\p01\ecv\sep03206\kssr\ss.dgn

