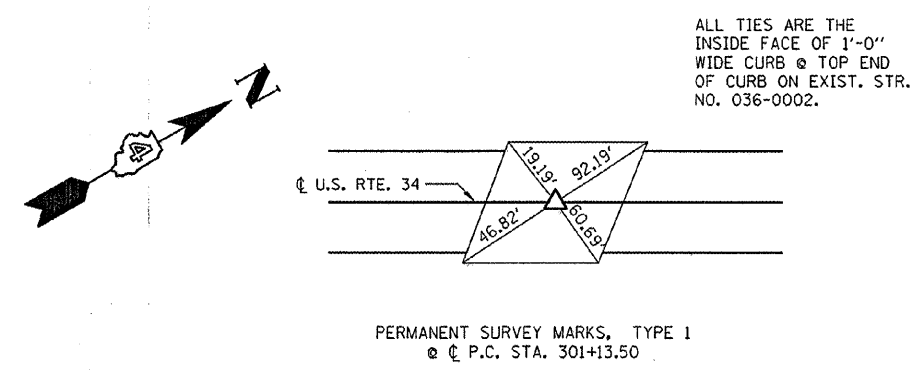


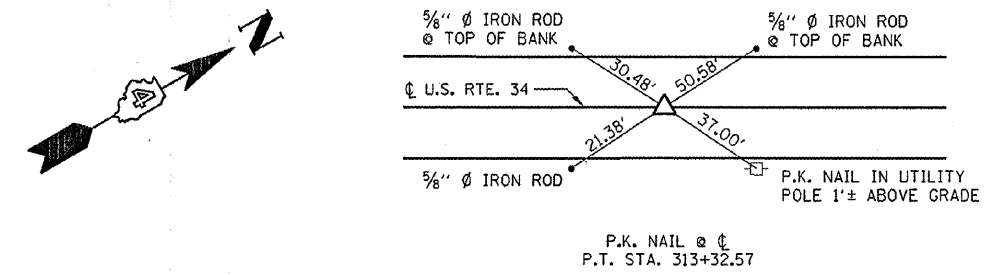
ROUTE NO.	SECTION	COUNTY	SHEET NO.	TOTAL SHEETS
FAP 313	(7BY)BR	HENDERSON	68	10
FED. ROAD DIST. NO.		ILLINOIS	FED. AID PROJECT-	

TIE POINTS US 34 OVER PD CREEK



BENCHMARKS US 34 OVER PD CREEK

BENCHMARK STATION 300+69, 18' RT. CHISELED "□" ON SE WINGWALL (STR. NO. 036-0002) ELEV. 541.19



HORIZONTAL ALIGNMENT			
POINT	STATION	NORTHING	EASTING
MAINLINE			
POT	266+05.90	1,514,514.484000	2,064,733.678000
PC	301+13.49	1,517,436.229893	2,066,674.456600
PI	307+30.60	1,517,950.260636	2,067,015.903086
PT	313+32.57	1,518,584.656359	2,064,023.542957
POT	318+82.06	1,519,092.839000	2,067,251.407000
RUNAROUND			
PC	93+81.82	1,516,826.791794	2,066,269.635488
PI	94+74.95	1,516,904.363480	2,066,321.182717
PT	95+67.59	1,516,971.655616	2,066,385.538103
PC	97+45.51	1,517,100.225641	2,066,508.538667
PI	98+14.79	1,517,150.282000	2,066,556.422000
PT	98+83.70	1,517,207.994536	2,066,594.739029
PC	102+57.62	1,517,519.505892	2,066,801.560469
PI	103+69.22	1,517,612.485000	2,066,863.292000
PT	104+79.32	1,517,519.044575	2,066,896.741352
POT	110+36.43	1,518,250.957000	2,067,062.100000

<p>HAMPTON, LENZINI & RENWICK, INC. CIVIL & STRUCTURAL ENGINEERS</p> <p>3085 STEVENSON DRIVE, SUITE 201 SPRINGFIELD, ILLINOIS 62703 (217) 548-3400</p> <p>ELGIN • SPRINGFIELD</p>	<p>ALIGNMENTS, TIES AND BENCHMARKS</p> <p>U.S. 34 OVER P.D. CREEK F.A.P. 313 / SECTION (7BY)BR HENDERSON COUNTY STRUCTURE NO. 036-0052 / STATION 301+23</p>	
	PROJECT NUMBER: 12-44-0001-X	DATE: 08/07/07
	DESIGNED: W.D.G.	CHECKED: L.F.S.
	DRAWN: W.J.S.	