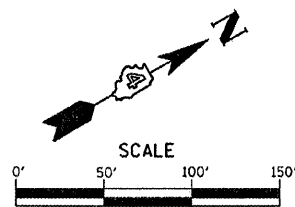
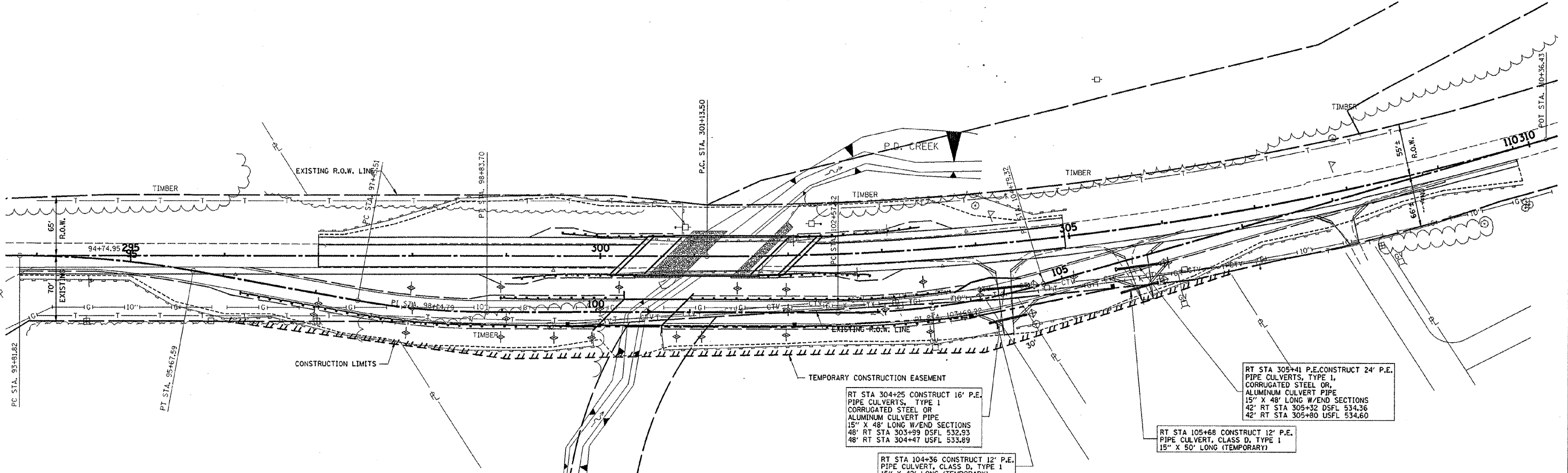


F.A. RTE.	SECTION	COUNTY	TOTAL SHEETS	SHEET NO.
313	(7BY)BR	HENDERSON	68	13
STA.		TO STA.		
FED. ROAD DIST. NO.		ILLINOIS	FED. AID PROJECT	



SW 1/4, NW 1/4, SEC. 29, T 10 N, R 5 W, 4TH, P.M.



SW 1/4, NW 1/4, SEC. 29, T 10 N, R 5 W, 4TH, P.M.

GENERAL NOTES FOR SOIL EROSION CONTROL

- PERIMETER EROSION BARRIER SHALL BE INSTALLED AT LOCATIONS SPECIFIED IN THE PLANS AT 4 FEET OUTSIDE THE TOE OF SLOPE OR INSIDE THE RIGHT-OF-WAY WHICHEVER IS CLOSER TO THE CENTERLINE, OR AS DIRECTED BY THE ENGINEER PRIOR TO THE START OF ANY EARTH, CULVERT, OR STORM SEWER CONSTRUCTION.
- THE PERIMETER EROSION BARRIER SHALL REMAIN IN PLACE UNTIL ALL DISTURBED AREAS HAVE BEEN STABILIZED WITH VEGETATION. AT THIS TIME, THE PERIMETER EROSION BARRIER SHALL BE REMOVED AND THE AREAS DAMAGED BY THE FENCE INSTALLATION RESTORED.
- THE FENCE INSTALLATION, MAINTENANCE, REMOVAL AND THE RESTORATION OF THE AREA DISTURBED BY THE FENCE INSTALLATION IS INCLUDED IN THE PAY ITEM PERIMETER EROSION BARRIER.
- TEMPORARY DITCH CHECKS SHALL BE CONSTRUCTED AS PER STANDARD 280001 ON 100 FOOT CENTERS AS SHOWN HEREON OR AS DIRECTED BY THE ENGINEER. THE DITCH CHECKS SHALL BE INSTALLED AS GRADING PROGRESS THROUGH THE PROJECT.
- APPLICABLE STANDARDS, SPECIFICATIONS, AND SPECIAL PROVISIONS FOR EROSION AND SEDIMENT CONTROL.
SPECIAL PROVISION FOR EROSION AND SEDIMENT CONTROL
IDOT HIGHWAY STANDARD 280001
DISTRICT 4 STANDARDS 280001-D4,
280101-D4, 630101-D4
- RIPRAP QUANTITY INCLUDED WITH ROADWAY PLANS.

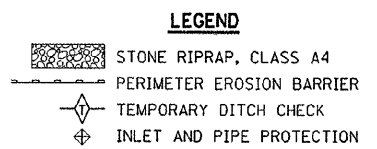
RT STA 304+25 CONSTRUCT 16' P.E. PIPE CULVERTS, TYPE 1 CORRUGATED STEEL OR ALUMINUM CULVERT PIPE 15' X 48' LONG W/END SECTIONS
48' RT STA 303+99 DSFL 532.93
48' RT STA 304+47 USFL 533.89

RT STA 305+41 P.E. CONSTRUCT 24' P.E. PIPE CULVERTS, TYPE 1, CORRUGATED STEEL OR ALUMINUM CULVERT PIPE 15' X 48' LONG W/END SECTIONS
42' RT STA 305+32 DSFL 534.36
42' RT STA 305+80 USFL 534.60

RT STA 105+68 CONSTRUCT 12' P.E. PIPE CULVERT, CLASS D, TYPE 1 15" X 50' LONG (TEMPORARY)

RT STA 104+36 CONSTRUCT 12' P.E. PIPE CULVERT, CLASS D, TYPE 1 15" X 42' LONG (TEMPORARY)

NOTE: EROSION CONTROL BLANKET TO BE APPLIED TO ALL DISTURBED EARTH SURFACES OF RUNAROUND AND MAINLINE WITH SLOPES GREATER THAN 3:1 THAT ARE NOT PROTECTED WITH RIPRAP AND TO LINE ALL DITCHES FOR A WIDTH OF 8'-0" CENTERED AT THE DITCH FLOW LINE OR AS DIRECTED BY THE ENGINEER. EST. QUANTITY = 3,388 SQ. YD.



HAMPTON, LENZINI & RENWICK, INC.
CIVIL & STRUCTURAL ENGINEERS

3085 STEVENSON DRIVE, SUITE 201
SPRINGFIELD, ILLINOIS 62703
(217) 548-3400

ELGIN • SPRINGFIELD

PROJECT NUMBER: 12-44-0001-X DATE: 08/07/07
DESIGNED: W.D.G. CHECKED: L.F.S. DRAWN: W.J.S.

REVISIONS	
NAME	DATE

ILLINOIS DEPARTMENT OF TRANSPORTATION
EROSION CONTROL PLAN
SECTION (7BY)BR
US 34 OVER PD CREEK
HENDERSON COUNTY
STA. 301+23

SCALE: VERT. DATE
HORIZ. DATE

DRAWN BY
CHECKED BY