

Benchmark: Top chiseled "□" in top of SE wingwall 18' right of Sta. 300+69, Elev. 541.19
 Existing Structure: #036-0002 Built in 1938 as SBI 8 @ Sta. 301+37 of US 34. It measures 103'-0" bk.-bk. abutments by 30'-0" fc.-fc. curbs. The structure is a three span bridge with a concrete deck span on slab on steel wide flange beams. The substructure consists of concrete spill thru abutments and pile bent piers. The Contractor shall remove the existing structure as required and replace it with a single span plate girder superstructure on pile bent abutments. Traffic shall be maintained utilizing a temporary bridge.

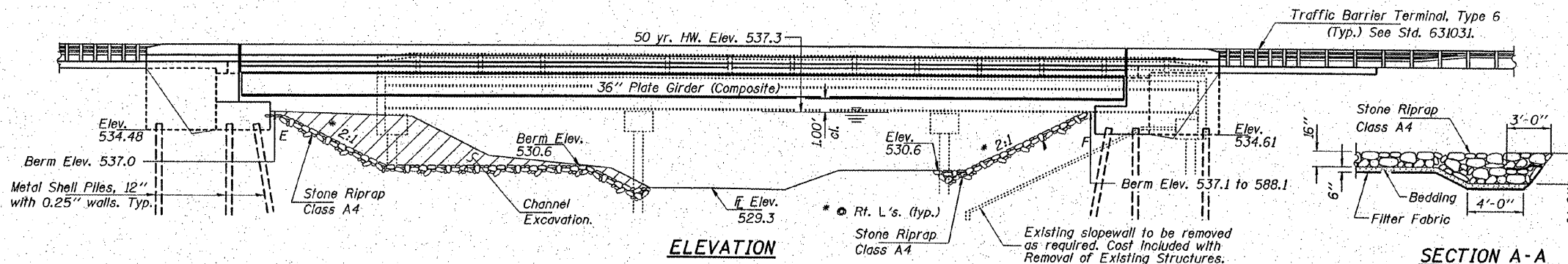
No Salvage.

ROUTE NO.	SECTION	COUNTY	DATE	SHEET NO.
FAP 313	(7B)BR	HENDERSON	68	15
FED. ROAD DIST. NO. 7	PLAN	FILE AND PROJECT		21 SHEETS

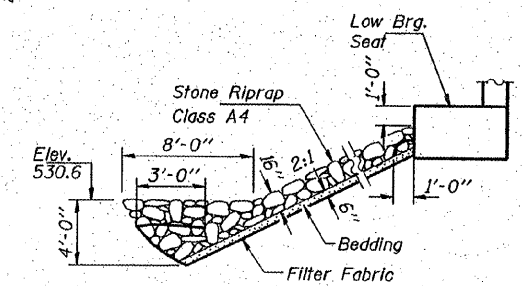
Contract No. 68149

CURVE DATA

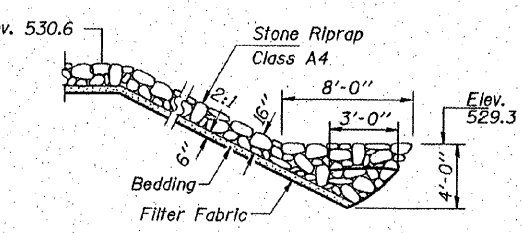
PT Sta. = 307+30.60
 D = 21°-56'-52"
 D = 1°-48'-01"
 R = 3183.46'
 T = 617.10'
 L = 1219.07'
 E = 59.28'
 PC Sta. = 301+13.50
 PT Sta. = 313+32.57
 SE = 0.027 1/1
 SE Transition Length = 165' (55 m.p.h.)
 SE Transitions:
 Attained from Sta. 300+03.00 to Sta. 301+68.00
 Removal - N/A



SECTION A-A



STONE RIPRAP ANCHOR DETAIL (East Abutment)



STONE RIPRAP ANCHOR DETAIL (West Abutment)

SEISMIC DATA

Seismic Performance Category (SPZ) = A
 Bedrock Acceleration Coefficient (A) = .04g
 Site Coefficient (S) = 1.5

LOADING HS20-44

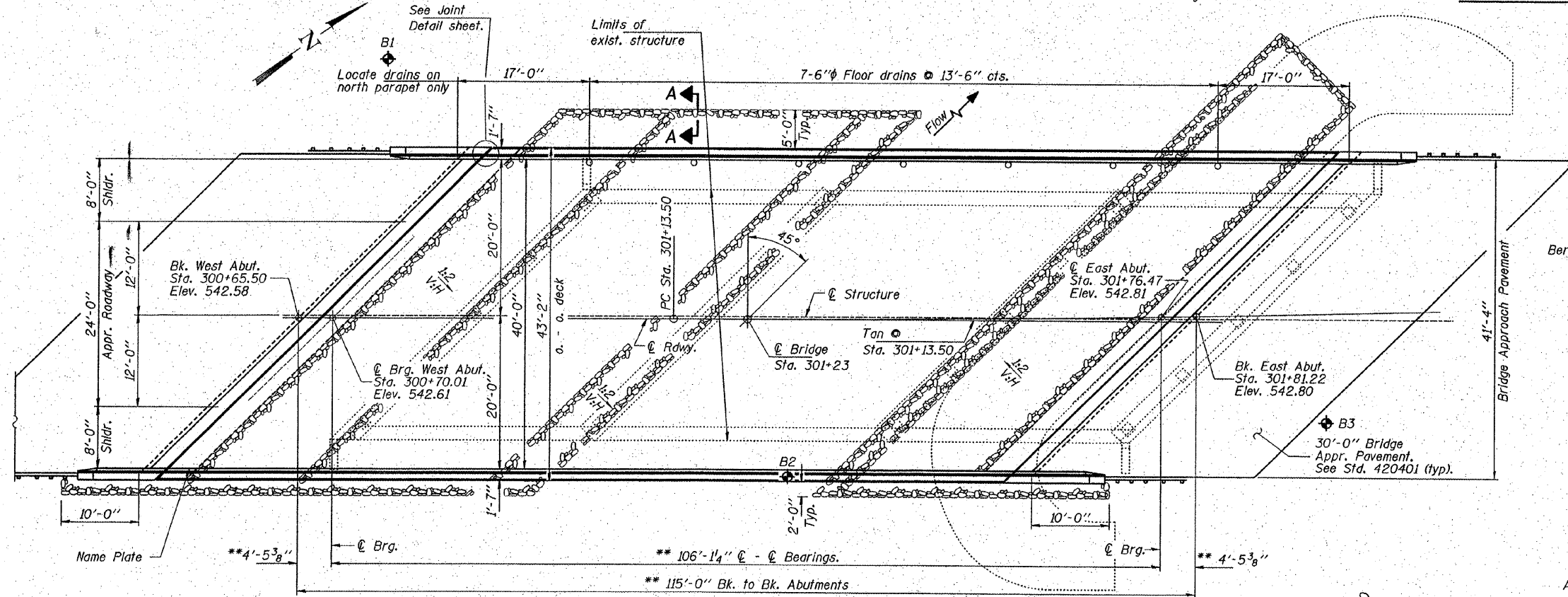
Allow 50#/sq. ft. for future wearing surface.

DESIGN SPECIFICATIONS

2002 AASHTO with applicable Interims

DESIGN STRESSES

FIELD UNITS
 f'c = 3,500 psi
 fy = 60,000 psi (reinforcement)
 fy = 50,000 psi (structural steel) (M270 Gr. 50W)

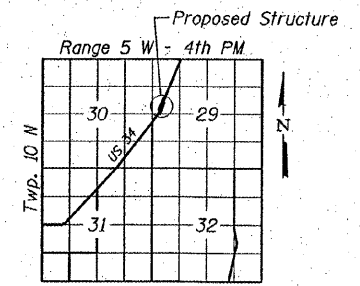


PLAN

** Along Structure

APPROVED
 For Structural Adequacy On:

Ralph E. Anderson
 Engineer of Bridges & Structures

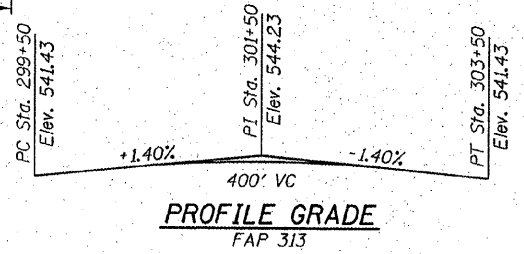


LOCATION SKETCH

WATERWAY INFORMATION

Drainage Area = 7.7 Sq. Mi. (Total) Low Grade Elev. 538.6 @ Sta. 311+68

Flood	Freq. Yr.	Q C.F.S.	Opening Sq. Ft.		Nat. H.W.E.		Head-Ft.		Headwater El.	
			Exist.	Prop.	Exist.	Prop.	Exist.	Prop.	Exist.	Prop.
Temp. Runaround	5	690	N/A	200	535.5	N/A	0.7	N/A	536.2	536.2
Design	50	1480	318	398	537.3	0.7	0.3	538.0	537.6	537.6
Base	100	1730	341	436	537.8	0.4	0.3	538.2	538.1	538.1
Max. Calc.	500	2340	341	474	538.8	0.4	0.5	539.2	539.3	539.3



PROFILE GRADE
 FAP 313



Stephen W. Magnuson 11/26/01
 ILLINOIS STRUCTURAL NO. 081-6064

Expires 11-30-08

HAMPTON, LENZINI & RENWICK, INC.
 CIVIL & STRUCTURAL ENGINEERS
 LAND SURVEYORS

3085 STEVENSON DRIVE, SUITE 201
 SPRINGFIELD, ILLINOIS 62703
 (217) 548-3400

ELGIN • SPRINGFIELD

PROJECT NUMBER: 12-44-0001-x DATE: 11/19/07
 DESIGNED: D.A.B. CHECKED: M.G.B. DRAWN: baliva

GENERAL PLAN & ELEVATION
 U.S. 34 OVER P.D. CREEK
 F.A.P. 313 / SECTION (7B)BR
 HENDERSON COUNTY
 STRUCTURE NO. 036-0052 / STATION 301+23