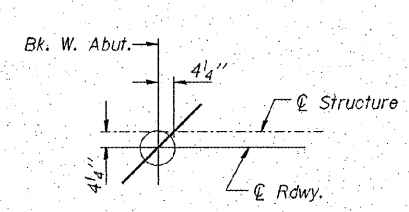
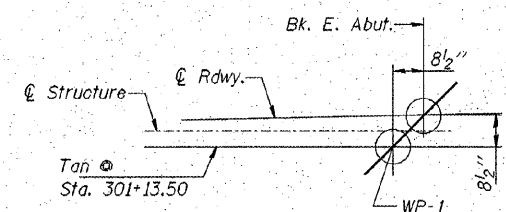


OFFSET SKETCH



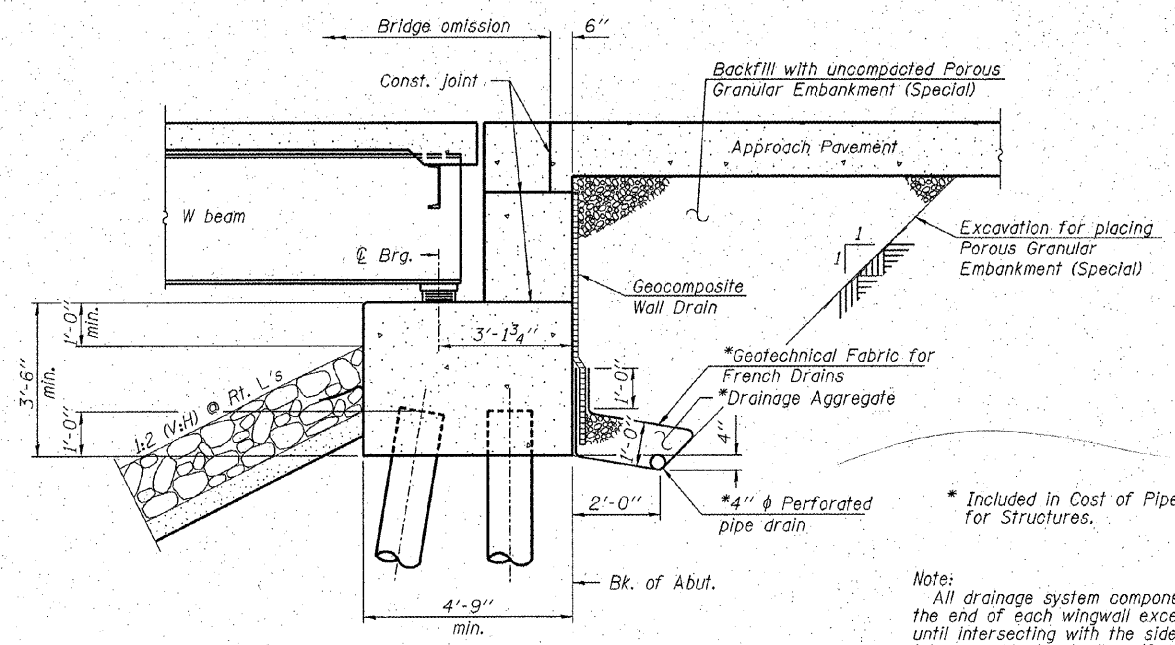
DETAIL A



DETAIL B

GENERAL NOTES

"Fasteners shall be AASHTO M164 Type 1, mechanically galvanized bolts in painted areas and M164 type 3 in unpainted areas. Bolts 3/4" φ, holes 1/2" φ, unless otherwise noted."
 Calculated weight of Structural Steel = 153,170 lbs.
 All structural steel shall be AASHTO M 270 Grade 50W (except expansion joints which shall be AASHTO M 270 Grade 36.)
 No field welding is permitted except as specified in the contract documents.
 Reinforcement bars shall conform to the requirements of ASTM A 706 Gr 60 (IL Modified). See Special Provisions.
 Reinforcement bars designated (E) shall be epoxy coated.
 Bearing seat surfaces shall be constructed or adjusted to their designated elevations within a tolerance of 1/8 inch (0.01 ft.). Adjustment shall be made either by grinding the surface or by shimming the bearings.
 Concrete Sealer shall be applied to the designated areas of the abutments.
 The existing structural steel coating contains lead. The Contractor shall take appropriate precautions to deal with the presence of lead on this project.
 Structural steel shall only be painted for a distance of 6 ft. each way from the deck joints. All structural steel shall be cleaned as specified in the Special Provision for "Surface Preparation and Painting Requirements for Weathering Steel".
 All exposed structural steel of the bearings shall be cleaned and shop painted as specified in the Special Provision for "Surface Preparation and Painting Requirements for Weathering Steel".
 Layout of slope protection system may be varied in the field to suit ground conditions as directed by the Engineer.
 The embankment configuration shown shall be the minimum that must be placed and compacted prior to construction of the abutments.
 The Contractor shall drive test piles to 10% of the nominal required bearing specified in production locations at substructures specified or approved by the Engineer before ordering the remainder of piles.
 The concrete for bridge decks finished according to Article 503.16(a) of the Standard Specifications shall be placed and compacted parallel to the skew in uniform increments along centerline of bridge. The machine used for finishing shall be set parallel to the skew for striking off and screeding the concrete.
 Slipforming of the parapets is not allowed.



SECTION THRU PILE SUPPORTED STUB ABUTMENT
 (Horiz. dim. @ Rt. L's)

STATION 301+23
 BUILT 200 BY
 STATE OF ILLINOIS
 FAP RTE 313
 SEC. (7BY)BR
 LOADING HS20
 STR. NO. 036-0052

NAME PLATE
 See Std. 515001

Note:
 All drainage system components shall extend to 2'-0" from the end of each wingwall except an outlet pipe shall extend until intersecting with the side slopes. The pipes shall drain into concrete headwalls. (See Article 601.05 of the Standard Specifications and Highway Standard 601101).

TOTAL BILL OF MATERIAL

ITEM	UNIT	SUPER	SUB	TOTAL
Porous Granular Embankment (Special)	Cu. Yd.		201	201
Stone Riprap, Class A4	Ton		470	470
Filter Fabric	Sq. Yd.		700	700
Protective Coat	Sq. Yd.	574		574
Removal of Existing Structures	Each	1		1
Structure Excavation	Cu. Yd.		344	344
Floor Drains	Each	7		7
Concrete Structures	Cu. Yd.		122.8	122.8
Concrete Superstructure	Cu. Yd.	154.4		154.4
Bridge Deck Grooving	Sq. Yd.	485		485
Furnishing and Erecting Structural Steel	L. Sum	1		1
Stud Shear Connectors	Each	2772		2772
Reinforcement Bars, Epoxy Coated	Pound	36,400	10,560	46,960
Furnishing Metal Shell Piles 12" x 0.25"	Foot	2,376		2,376
Driving Piles	Foot	2,376		2,376
Test Pile Metal Shells	Each	2		2
Name Plates	Each	1		1
Preformed Joint Strip Seal	Foot	118		118
Concrete Sealer	Sq. Ft.		336	336
Bar Splacers	Each	82		82
Elastomeric Bearing Assembly Type I	Each	6		6
Geocomposite Wall Drain	Sq. Yd.			96
Pipe Underdrains for Structures, 4"	Foot			206
Anchor Bolts 1 1/4"	Each			24

HAMPTON, LENZINI & RENWICK, INC.
 CIVIL & STRUCTURAL ENGINEERS
 LAND SURVEYORS

HLR

3085 STEVENSON DRIVE, SUITE 201
 SPRINGFIELD, ILLINOIS 62703
 (217) 548-3400

ELGIN • SPRINGFIELD

PROJECT NUMBER: 12 44 0001 x DATE: 11/19/07
 DESIGNED: D.A.B. CHECKED: M.G.B. DRAWN: ballva

DETAILS

U.S. 34 OVER P.D. CREEK
 F.A.P. 313 / SECTION (7BY)BR
 HENDERSON COUNTY

STRUCTURE NO. 036-0052 / STATION 301+23