

STATE OF ILLINOIS  
DEPARTMENT OF TRANSPORTATION

ROUTE NO.	SECTION	COUNTY	SHEETS	SHEET	SHEET NO.
F.A.P. 313	(7BY)BR	HENDERSON	68	20	21 SHEETS
FED. ROAD DIST. NO. 7	ILLINOIS	FED. AID PROJECT			

Contract #68149

**NORTH CURB LINE**

Location	Station	Offset	Theoretical Grade Elevations	Theoretical Grade Elevations Adjusted For Dead Load Deflection
Beginning of Slab	302+00.683	-19.168	542.223	
A	302+10.875	-19.228	542.181	
B	302+21.034	-19.255	542.134	
End of E. Approach Pvmt.	302+31.160	-19.250	542.080	

**NORTH EDGE OF PAVEMENT**

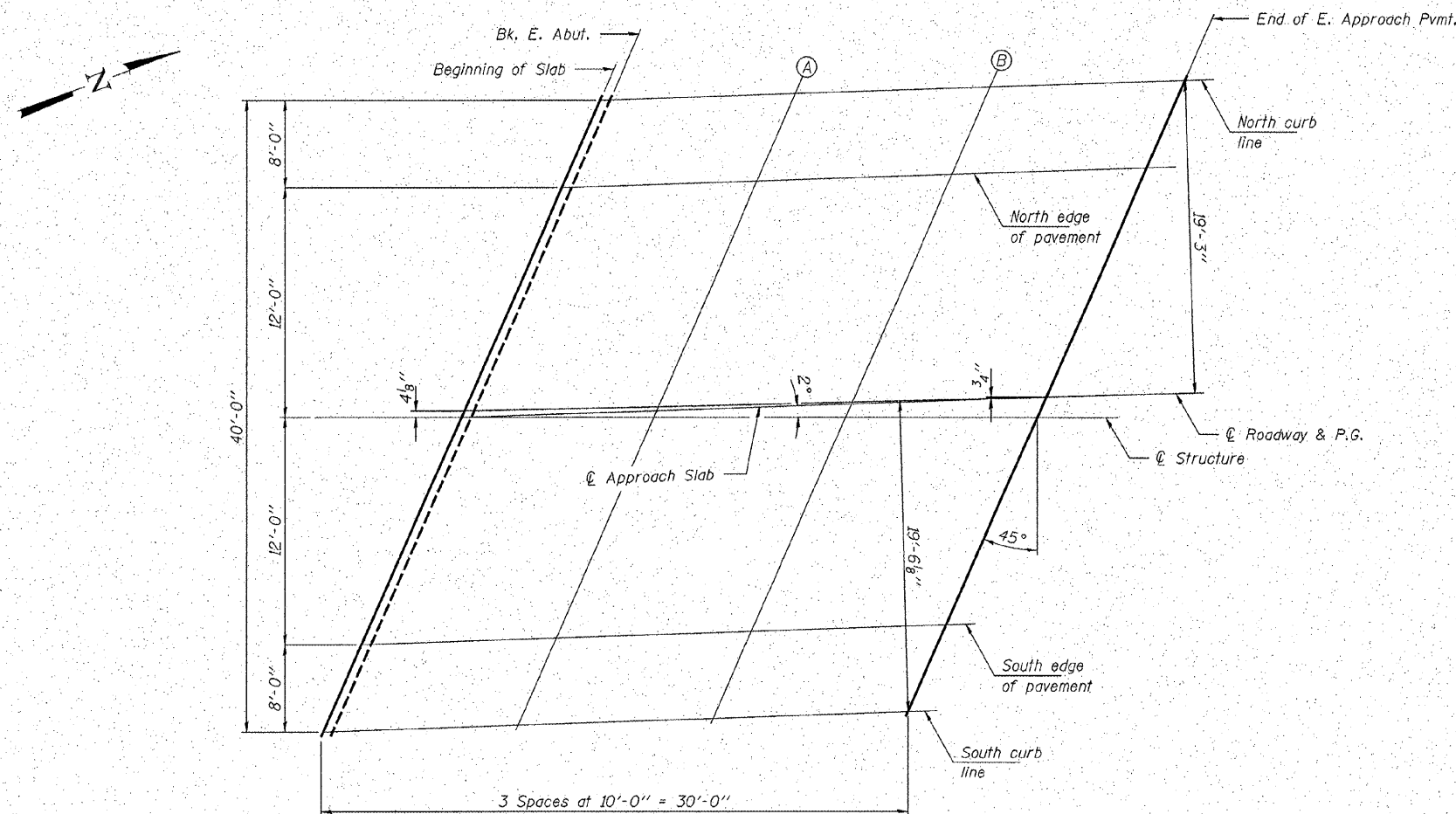
Location	Station	Offset	Theoretical Grade Elevations	Theoretical Grade Elevations Adjusted For Dead Load Deflection
Beginning of Slab	301+92.437	-11.379	542.460	
A	302+02.604	-11.465	542.424	
B	302+12.739	-11.519	542.381	
End of E. Approach Pvmt.	302+22.839	-11.541	542.333	

**☉ STRUCTURE**

Location	Station	Offset	Theoretical Grade Elevations	Theoretical Grade Elevations Adjusted For Dead Load Deflection
Beginning of Slab	301+80.145	0.344	542.807	
A	301+90.274	0.218	542.779	
B	302+00.371	0.125	542.745	
End of E. Approach Pvmt.	302+10.435	0.064	542.704	

**☉ ROADWAY & P.G.**

Location	Station	Offset	Theoretical Grade Elevations	Theoretical Grade Elevations Adjusted For Dead Load Deflection
Beginning of Slab	301+80.503	0.000	542.797	
A	301+90.503	0.000	542.773	
B	302+00.503	0.000	542.741	
End of E. Approach Pvmt.	302+10.503	0.000	542.702	



**PLAN**

**SOUTH EDGE OF PAVEMENT**

Location	Station	Offset	Theoretical Grade Elevations	Theoretical Grade Elevations Adjusted For Dead Load Deflection
Beginning of Slab	301+67.943	12.113	543.146	
A	301+78.034	11.949	543.125	
B	301+88.093	11.817	543.098	
End of E. Approach Pvmt.	301+98.120	11.717	543.065	

**SOUTH CURB LINE**

Location	Station	Offset	Theoretical Grade Elevations	Theoretical Grade Elevations Adjusted For Dead Load Deflection
Beginning of Slab	301+59.858	19.986	543.319	
A	301+69.924	19.795	543.351	
B	301+79.958	19.638	543.329	
End of E. Approach Pvmt.	301+89.960	19.512	543.301	

**HAMPTON, LENZINI & RENWICK, INC.**  
CIVIL & STRUCTURAL ENGINEERS  
LAND SURVEYORS

3085 STEVENSON DRIVE, SUITE 201  
SPRINGFIELD, ILLINOIS 62703  
(217) 646-3400

**HLR**

ELGIN • SPRINGFIELD

PROJECT NUMBER: 12-44-0001-1    DATE: 11/19/07  
DESIGNED: D.A.B.    CHECKED: M.G.B.    DRAWN: D.T.M.

**TOP OF EAST APPROACH  
SLAB ELEVATIONS  
U.S. 34 OVER P.D. CREEK  
F.A.P. 313 / SECTION (7BY)BR  
HENDERSON COUNTY  
STRUCTURE NO. 036-0052 / STATION 301+23**