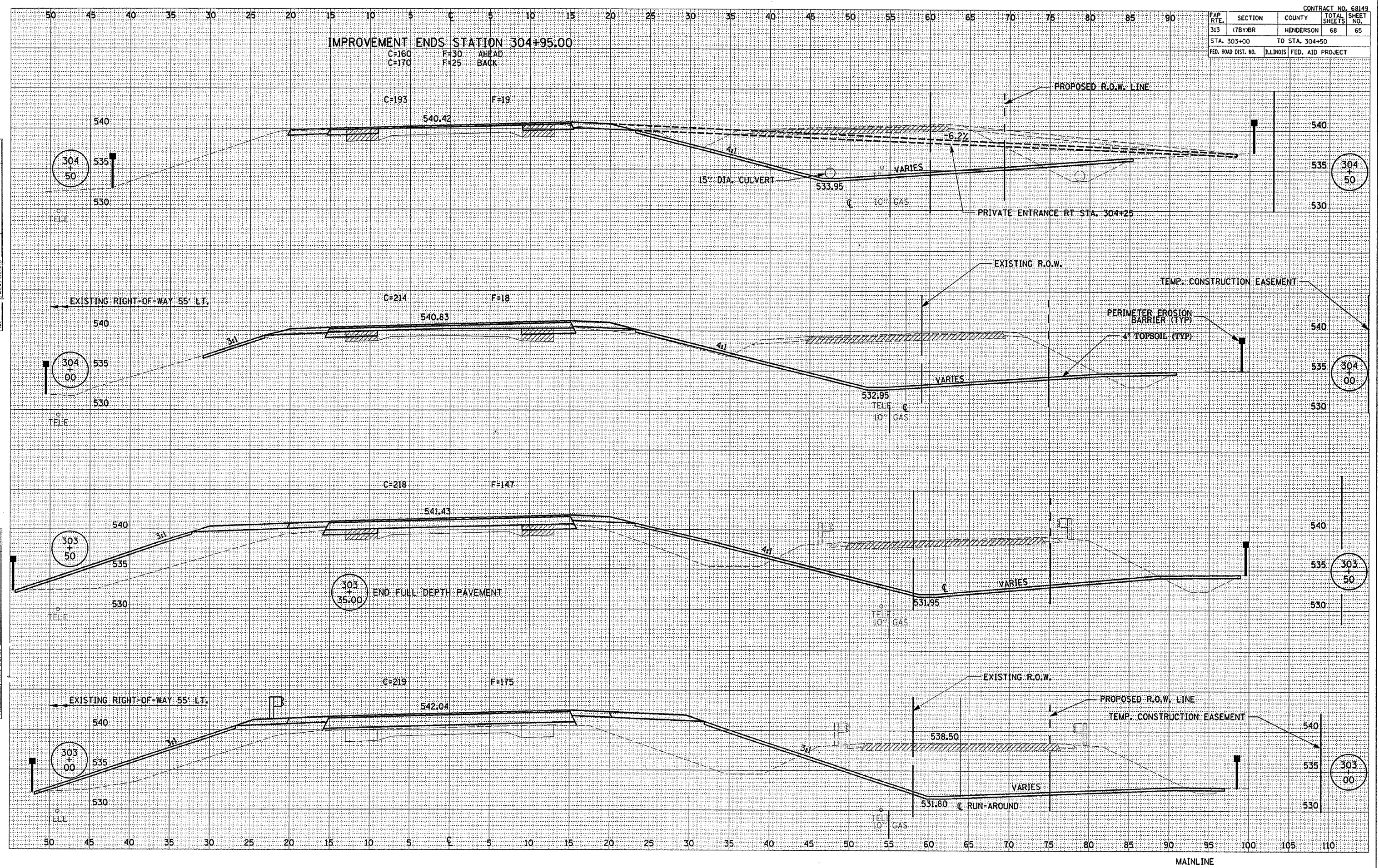


FAP RTE.	SECTION	COUNTY	TOTAL SHEETS	SHEET NO.
313	(7BY)BR	HENDERSON	68	65
STA. 303+00		TO STA. 304+50		
FED. ROAD DIST. NO.	ILLINOIS	FED. AID PROJECT		

IMPROVEMENT ENDS STATION 304+95.00

C=160 F=30 AHEAD
C=170 F=25 BACK



DATE _____
BY _____
SURVEYED _____
PLOTTED _____
NOTE BOOK _____
AREAS CHECKED _____

DATE _____
BY _____
SURVEYED _____
PLOTTED _____
NOTE BOOK _____
AREAS CHECKED _____