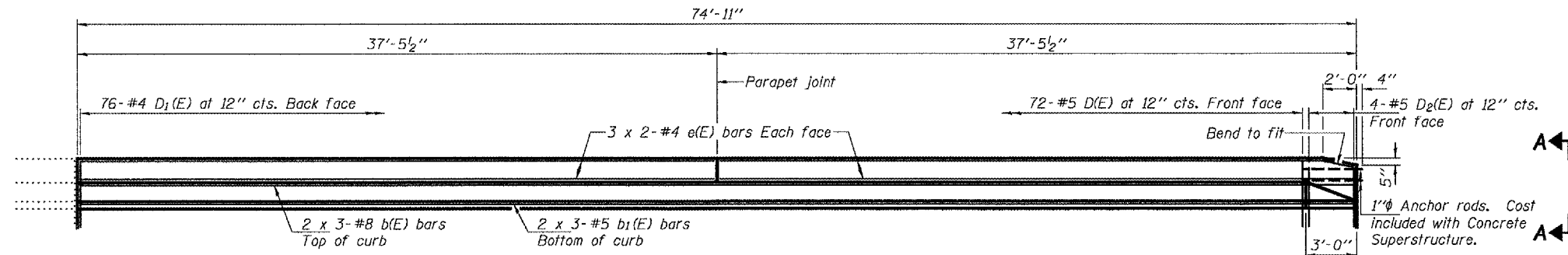


STATE OF ILLINOIS
DEPARTMENT OF TRANSPORTATION

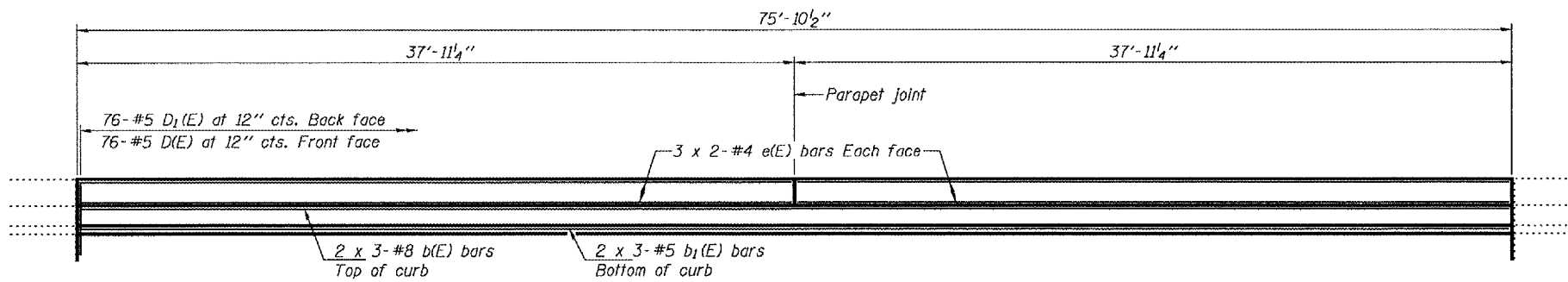
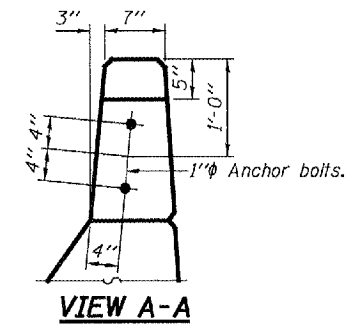
ROUTE NO.	SECTION	COUNTY	SHEET NO.	SHEET NO.
FA 36		MC DONOUGH	13	13
FED. ROAD DIST. NO. 7		ILLINOIS FED. AID PROJECT		

SHEET NO. 5
5 SHEETS

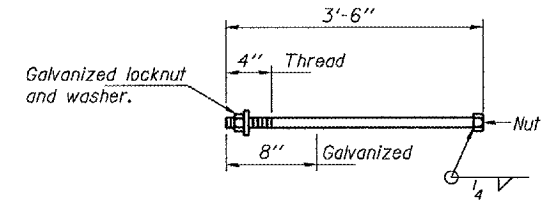
Contract Number: 68760



SPAN 1 PARAPET ELEVATION
(Looking East)



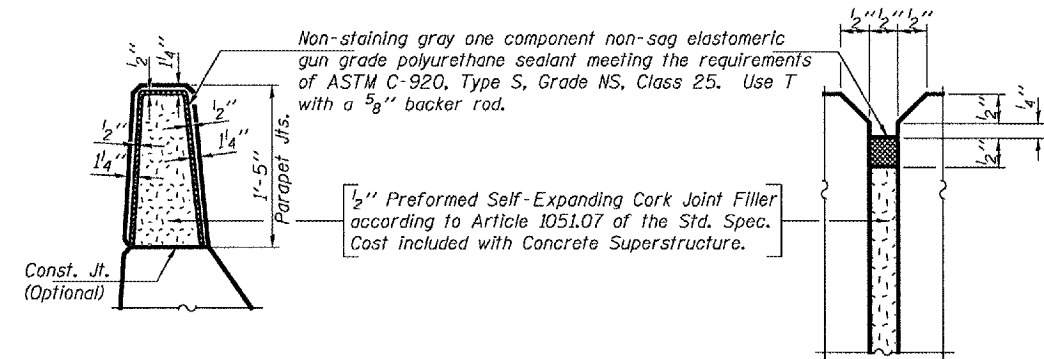
SPAN 4 PARAPET ELEVATION
(Looking West)



1" ANCHOR ROD

MINIMUM BAR LAPS

- #4 bar = 1'-8"
- #5 bar = 2'-2"
- #8 bar = 4'-6"



PARAPET JOINT DETAILS

BILL OF MATERIAL

Bar	No.	Size	Length	Shape
e(E)	24	#4	19'-9"	—
b(E)	12	#8	28'-3"	—
b1(E)	12	#5	26'-8"	—
Reinforcement Bars, Epoxy Coated			Pound	1560
Concrete Superstructure			Cu. Yds.	18.3

Bars indicated thus 2 x 3-#5 etc. Indicates 2 lines of bars with 3 lengths per line.

REPAIR DETAILS
FA 36
MCDONOUGH COUNTY
SN 055-0010

DESIGNED	ATH
CHECKED	AJB
DRAWN	baliva
CHECKED	ATH AJB

NOVEMBER 7, 2007
EXAMINED *Carl K...*
ENGINEER OF STRUCTURAL SERVICES
PASSED *Ralph E. Anderson*
ENGINEER OF BRIDGES AND STRUCTURES