

**MIN BAR LAP**

#4 Bars = 1'-4"  
#5 Bars = 1'-8"  
#6 Bars = 2'-0"  
#9 Bars = 4'-7"

**Notes:**

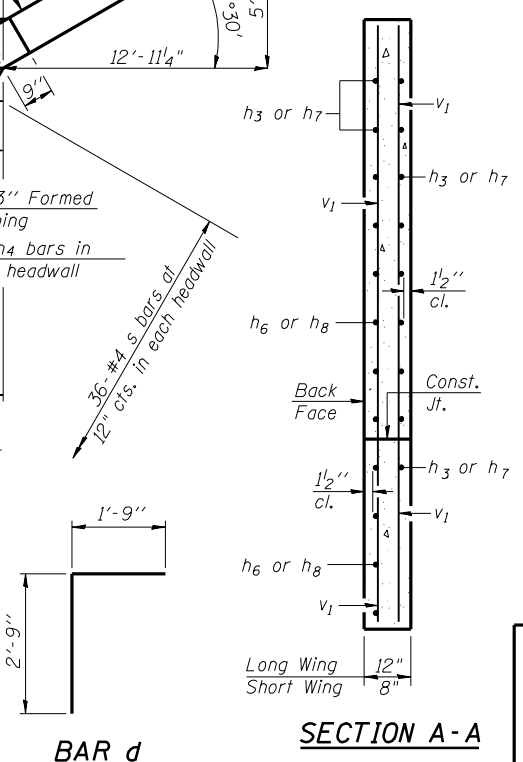
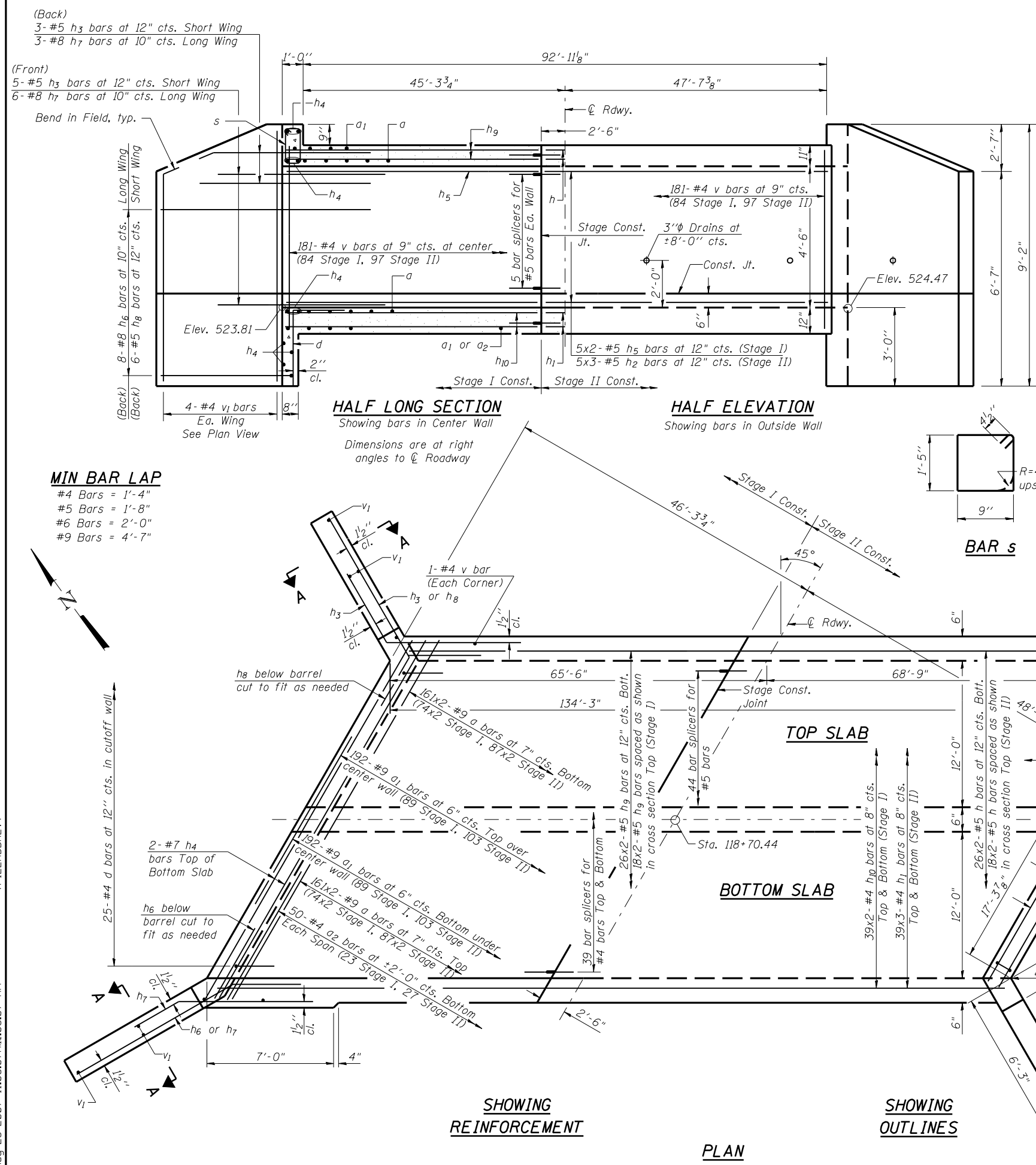
A distance of half the length of the wingwall but not less than six feet of the barrel shall be poured monolithically with the wingwalls.

Bars indicated thus 39x2-#4 etc. indicates 39 lines of bars with 2 lengths per line.

See sheet 2 of 6 for Phoebe Nesting Site Details and Drain Detail.

**BILL OF MATERIAL**

Bar	No.	Size	Length	Shape
a	644	#9	21'-5"	C
a <sub>1</sub>	384	#9	24'-0"	—
a <sub>2</sub>	100	#4	7'-3"	—
d	50	#4	4'-6"	—
h	88	#5	36'-11"	—
h <sub>1</sub>	234	#4	24'-11"	—
h <sub>2</sub>	45	#5	25'-2"	—
h <sub>3</sub>	16	#5	8'-0"	—
h <sub>4</sub>	18	#7	34'-10"	—
h <sub>5</sub>	30	#5	31'-8"	—
h <sub>6</sub>	16	#8	17'-0"	—
h <sub>7</sub>	18	#8	8'-0"	—
h <sub>8</sub>	12	#5	9'-3"	—
h <sub>9</sub>	88	#5	31'-9"	—
h <sub>10</sub>	156	#4	31'-6"	—
s	72	#4	5'-1"	□
v	547	#4	6'-1"	—
v <sub>1</sub>	16	#4	8'-10"	—
Concrete Box Culverts			Cu. Yd.	293.5
Reinforcement Bars			Pound	99720



**REVISIONS**

NAME	DATE

**Lin Engineering, Ltd.**  
Consulting Engineers  
Chatham, Illinois

Designed By: JWR    Checked By: DLS    Drawn By: AUF  
Date: 08/2007    File: 034-2520.DGN

ILLINOIS DEPARTMENT OF TRANSPORTATION

**CULVERT DETAILS**

IL ROUTE 9/IL ROUTE 96  
OVER SIDE ROAD DITCH  
F.A.P. ROUTE 685 - SECTION 113B-3  
HANCOCK COUNTY  
STA. 118+70.44  
STRUCTURE NO. 034-2520