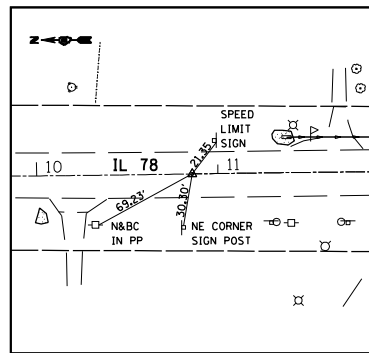
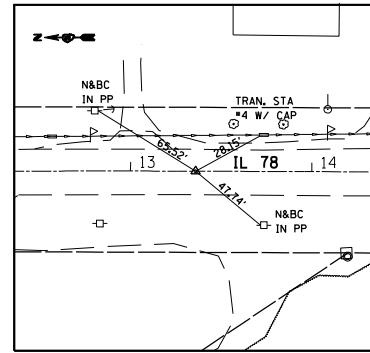


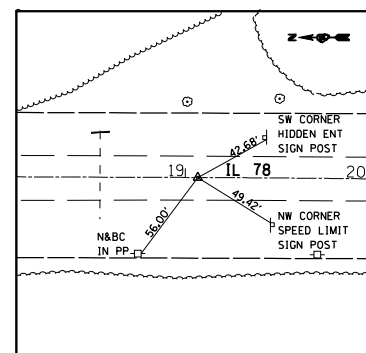
| F.A.P. RTE. | SECTION | COUNTY | TOTAL SHEETS | SHEET NO. |
|---------------------|-----------|----------|------------------|-----------|
| 614 | 148(BR-2) | MORGAN | 39 | 11 |
| STA. | | TO STA. | | |
| FED. ROAD DIST. NO. | | ILLINOIS | FED. AID PROJECT | |



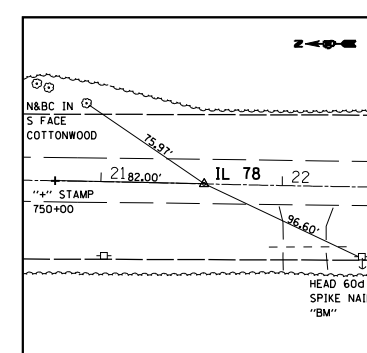
P.R.C. 10+85.82
(SET PK N&BC W/ CHSLD "X")



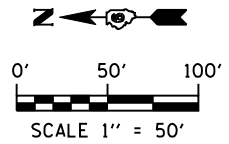
P.T. 13+35.84
(SET PK N&BC W/ CHSLD "X")



P.C. 19+06.84
(SET PK N&BC W/ CHSLD "X")



P.R.C. 21+56.86
(SET PK N&BC W/ CHSLD "X")

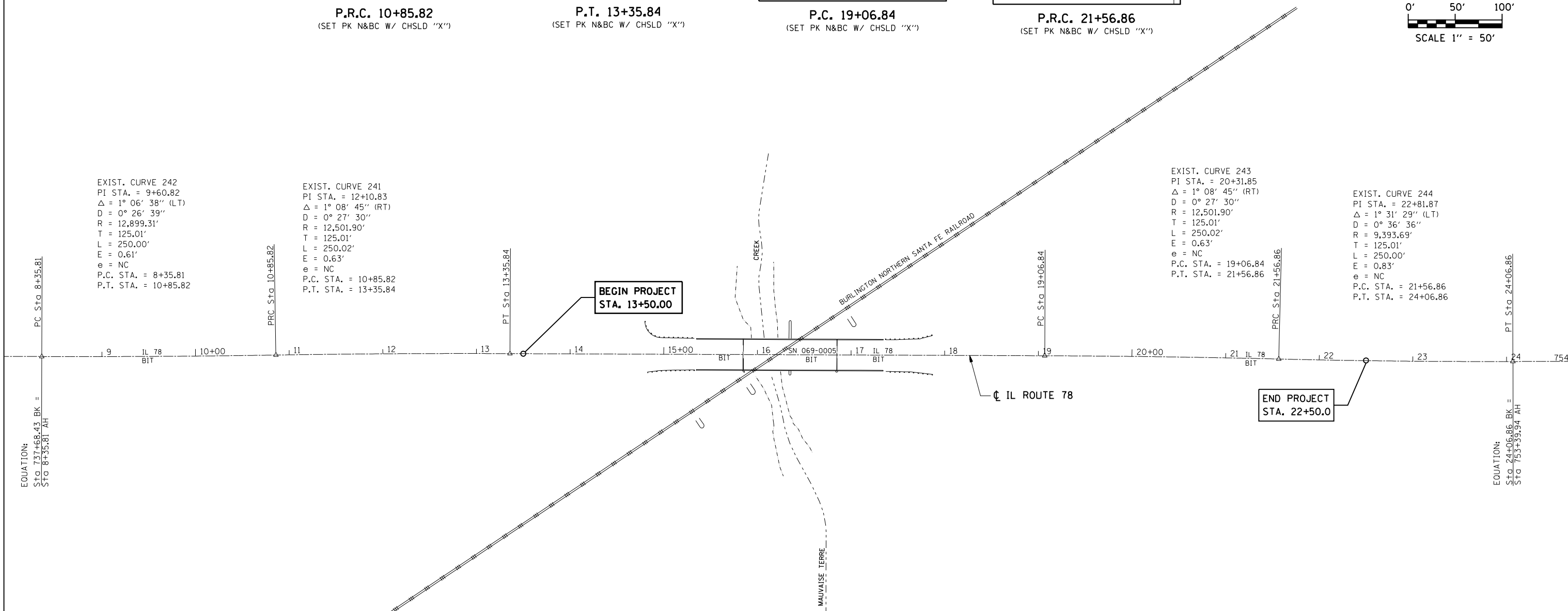


EXIST. CURVE 242
PI STA. = 9+60.82
 $\Delta = 1^\circ 06' 38''$ (LT)
D = 0° 26' 39"
R = 12,899.31'
T = 125.01'
L = 250.00'
E = 0.61'
e = NC
P.C. STA. = 8+35.81
P.T. STA. = 10+85.82

EXIST. CURVE 241
PI STA. = 12+10.83
 $\Delta = 1^\circ 08' 45''$ (RT)
D = 0° 27' 30"
R = 12,501.90'
T = 125.01'
L = 250.02'
E = 0.63'
e = NC
P.C. STA. = 10+85.82
P.T. STA. = 13+35.84

EXIST. CURVE 243
PI STA. = 20+31.85
 $\Delta = 1^\circ 08' 45''$ (RT)
D = 0° 27' 30"
R = 12,501.90'
T = 125.01'
L = 250.02'
E = 0.63'
e = NC
P.C. STA. = 19+06.84
P.T. STA. = 21+56.86

EXIST. CURVE 244
PI STA. = 22+81.87
 $\Delta = 1^\circ 31' 29''$ (LT)
D = 0° 36' 36"
R = 9,393.69'
T = 125.01'
L = 250.00'
E = 0.83'
e = NC
P.C. STA. = 21+56.86
P.T. STA. = 24+06.86



EQUATION:
STO 737+68.43 BK =
STO 8+35.81 AH

EQUATION:
STO 24+06.86 BK =
STO 753+39.94 AH

BM *37: STA. 15+34.0, 17.7' RT
CHISLED "G" IN NW
WINGWALL OF SN 069-0005
ELEV. = 562.14

BM *24-100: STA. 734+85.6, 38.4' LT
A 60d NAIL IN PP ON E
SIDE OF IL 78 ±3310' N OF
OAK STEET, JACKSONVILLE
ELEV. = 596.62

BM *24-101: STA. 22+44.2, 39.9' RT
A 60d NAIL IN PP ON W
SIDE OF IL 78 ±1600' N OF
OAK STEET, JACKSONVILLE
ELEV. = 558.01

| REVISIONS | |
|-----------|------|
| NAME | DATE |
| | |
| | |
| | |
| | |
| | |
| | |
| | |
| | |
| | |
| | |

ILLINOIS DEPARTMENT OF TRANSPORTATION

ALIGNMENT, TIES, AND BENCHMARKS

DRAWN BY JCW
CHECKED BY JRB
DATE: 3/13/07