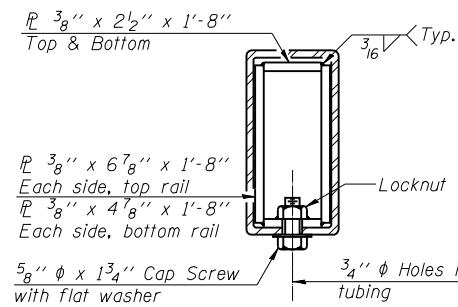
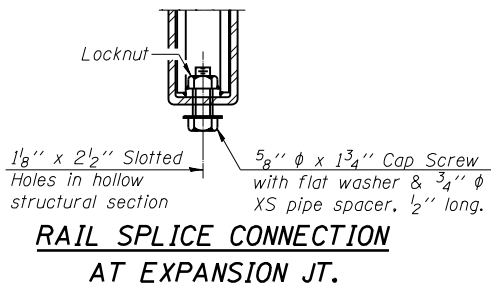
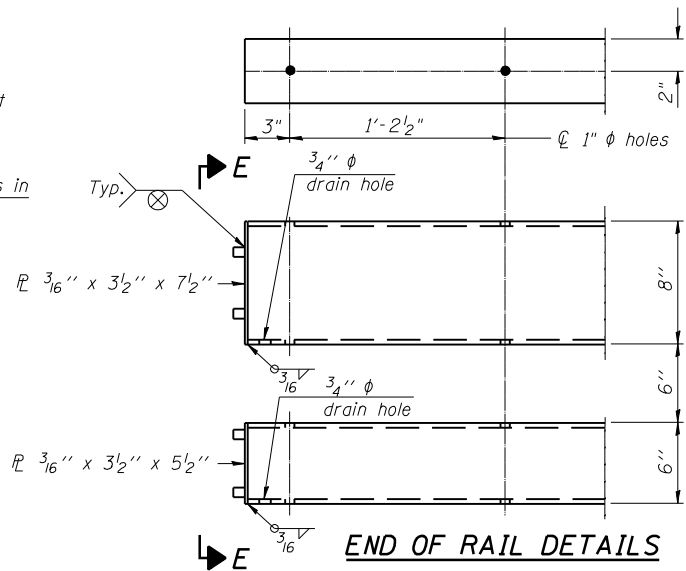


4-3/4" ϕ x 6" Round Head Bolts
(With slot or approved recess in head) with locknut & flat washer.
7/8" ϕ holes in hollow structural section may be drilled in the field.

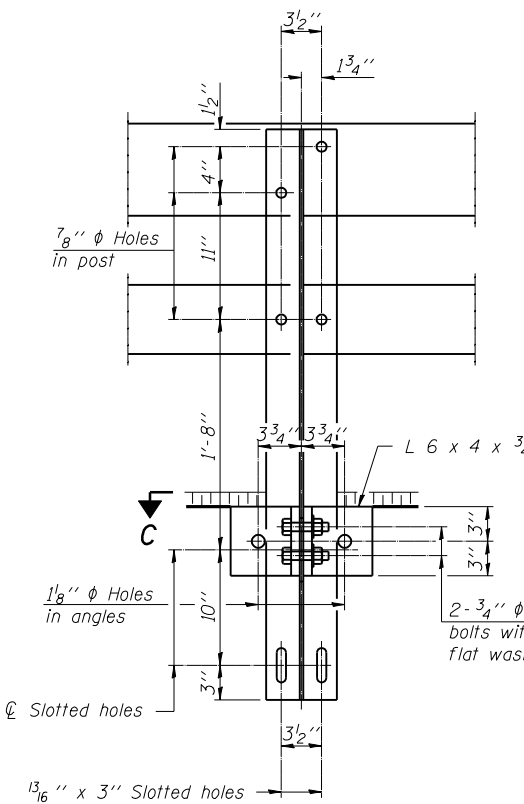
FOR RAIL POST SPACING SEE SH.#5 OF 12



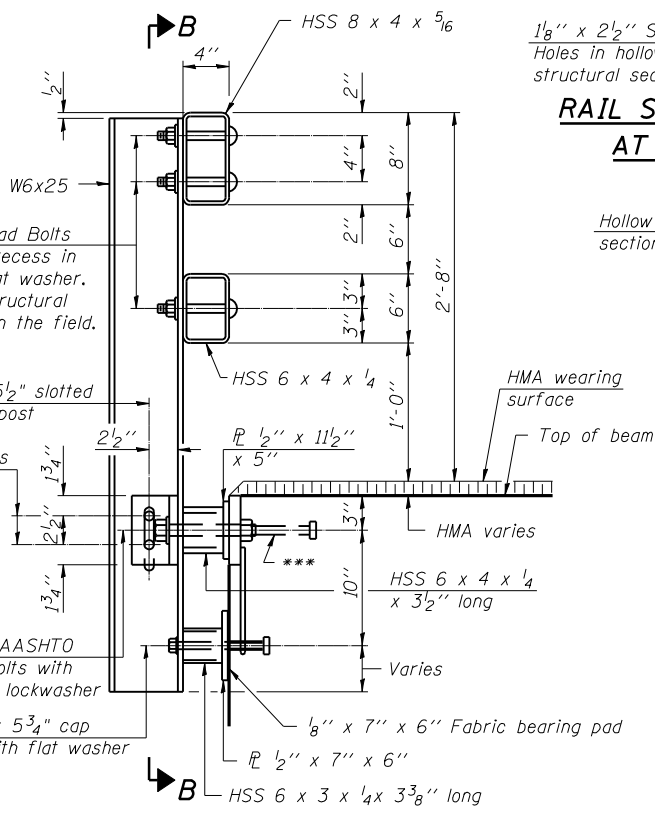
SECTION AT RAIL SPLICE



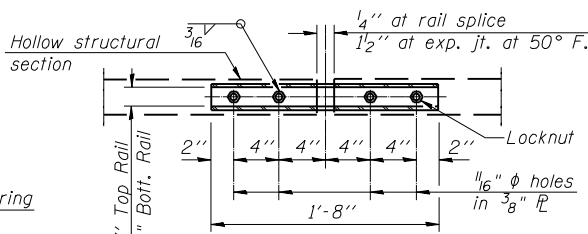
END OF RAIL DETAILS



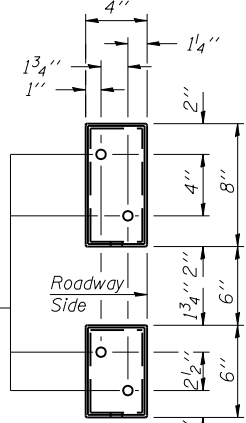
SECTION B-B



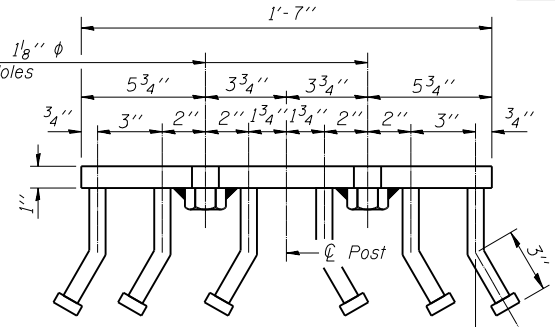
SECTION AT RAIL POST



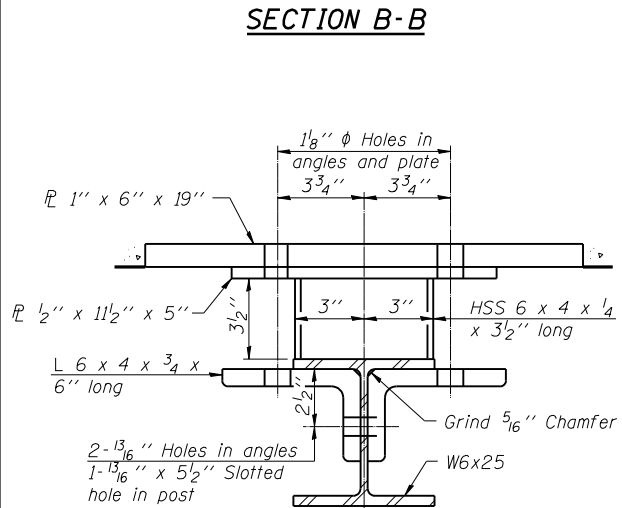
PLAN-BOTT. SPLICE TYPICAL



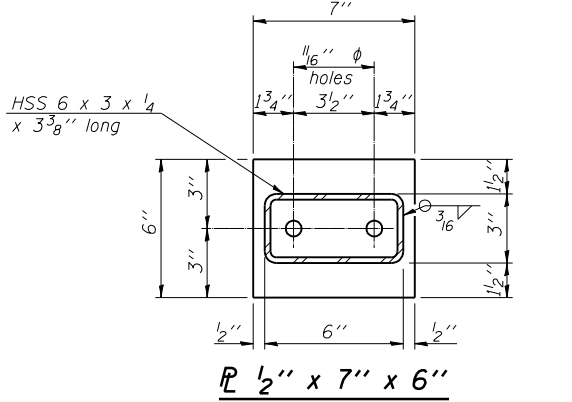
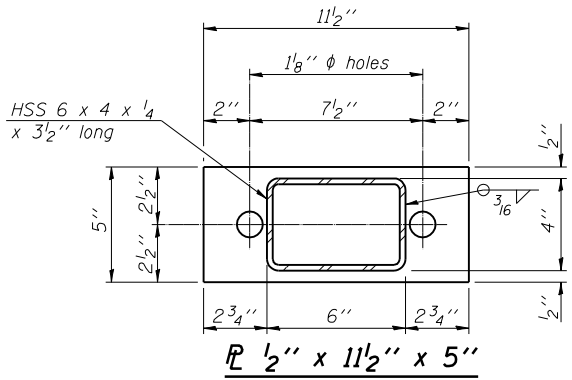
VIEW E-E



VIEW D-D



SECTION C-C



ANCHOR DEVICE

* Threaded areas shall be plugged or blocked off during casting of beam. Galvanized after fabrication.

Notes:
All field drilled holes shall be coated with an approved zinc rich paint before erection.
For multi-span bridges, sufficient 1/4" x 6" x 1'-2" galvanized steel shims shall be provided to align rail between adjacent spans. Cost included with Steel Bridge Rail, Type SM.
All steel rail members shall be galvanized according to Article 509.05 of the Standard Specifications.
The studs of the anchor devices shall be placed below the top reinforcement bars and the outermost longitudinal reinforcement bar shall be placed directly above the studs of the rail post anchor device.
Rail post anchor devices shall be supplied with the PPC Deck Beams. Cost included with PPC Deck Beams.

BILL OF MATERIAL

Item	Unit	Quantity
Steel Railing, Type SM	Foot	405

STEEL RAILING, TYPE SM WITH HOT-MIX ASPHALT SURFACE
ILLINOIS ROUTE 78 OVER MAUVAISE TERRE CREEK
F.A.P 614 SEC. 148BR-2
MORGAN COUNTY
STATION 16+34.85
STR. NO. 069-0005

HUTCHISON ENGINEERING, INC.
JACKSONVILLE, ILLINOIS

Rev: _____ Date: _____

DESIGNED	BAN
CHECKED	JOH
DRAWN	TC/TD
CHECKED	BAN

R-34HMAWS

11-1-06 (6'-3" Maximum Post Spacing) (1/4" minimum to 3/8" maximum HMA thickness)