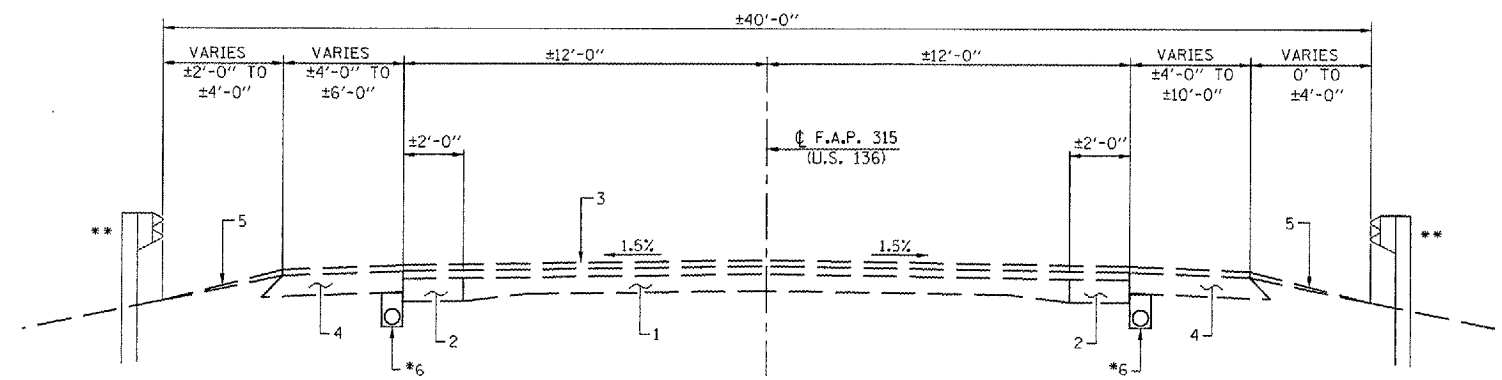


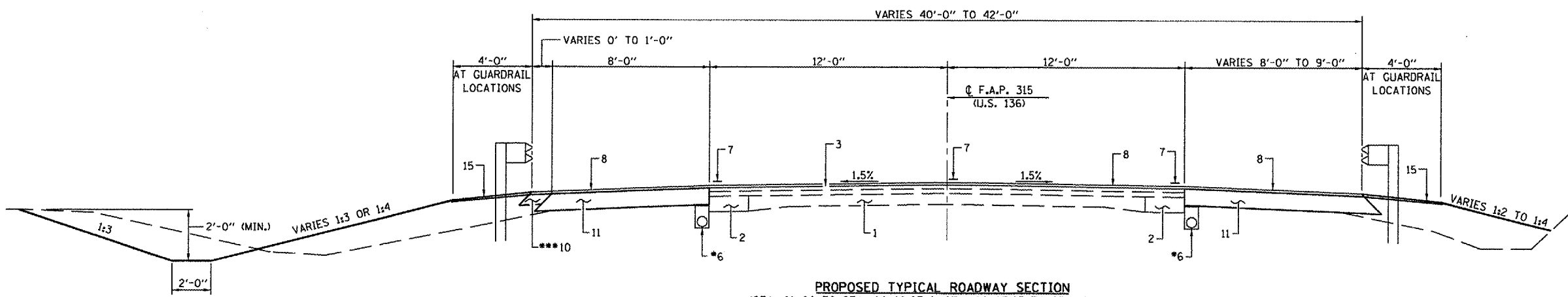
F.A.P. RTE.	SECTION	COUNTY	TOTAL SHEETS	SHEET NO.
315	116(BR-1)	LOGAN	79	6
STA. 81+00		TO STA. 90+00		
FED. ROAD DIST. NO. ILLINOIS FED. AID PROJECT				

** EXISTING GUARDRAIL
 RT. STA. 83±70 TO STA. 84±70
 LT. STA. 84±20 TO STA. 85±20
 RT. STA. 85±67 TO STA. 86±67
 LT. STA. 86±23 TO STA. 87±23



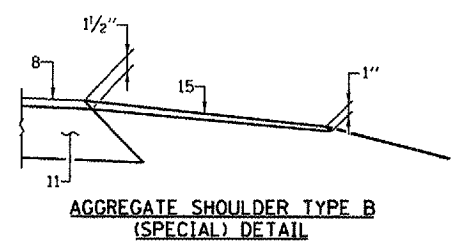
EXISTING TYPICAL ROADWAY SECTION

EXISTING PIPE UNDERDRAIN
 STA. 81+00 TO STA. 81±48.23
 LT. STA. 82±48.33 TO STA. 90±00



PROPOSED TYPICAL ROADWAY SECTION
 (STA. 81+00 TO STA. 84+62.07 & STA. 86+27.93 TO STA. 91+00)

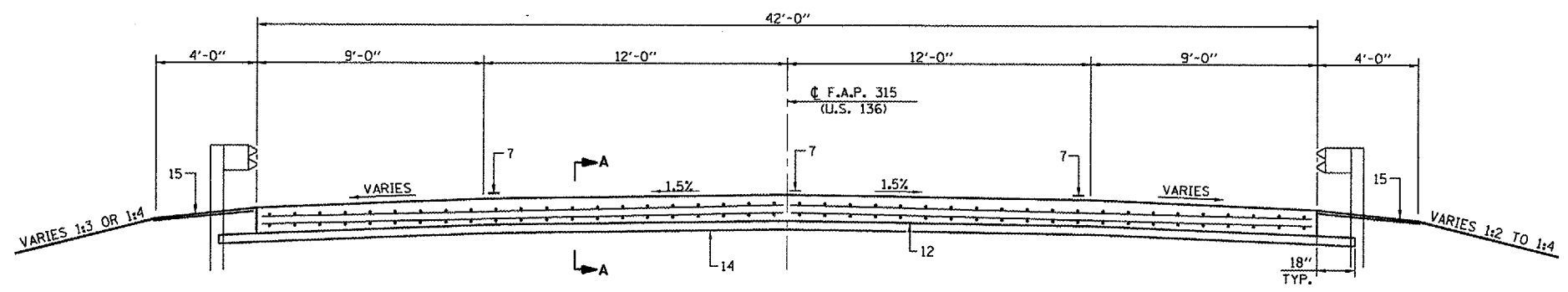
*** VARIES 0' TO 1'-0" STA. 82+30 TO 82+50 LT.
 1'-0" STA. 82+50 TO STA. 84+62.07 & STA. 86+27.93 TO STA. 89+50 LT.
 VARIES 1'-0" TO 0' STA. 89+50 TO STA. 90+00 LT.
 QUANTITY INCLUDED WITH PROPOSED
 HOT MIX ASPHALT SURFACE COURSE



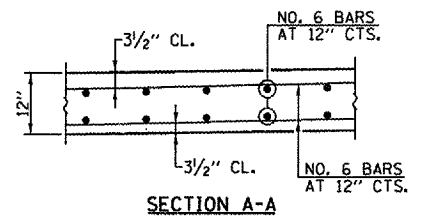
AGGREGATE SHOULDER TYPE B
 (SPECIAL) DETAIL

PAVEMENT LEGEND

- EXISTING 9"-6"-9" P.C.C. PAVEMENT
- EXISTING HOT MIX ASPHALT BASE COURSE WIDENING 9"
- EXISTING HOT MIX ASPHALT OVERLAY
- EXISTING HOT MIX ASPHALT SHOULDER 8"
- EXISTING AGGREGATE/EARTH SHOULDER
- EXISTING PIPE UNDERDRAIN
- PROPOSED PAVEMENT MARKING - LINE 5"
- PROPOSED HOT MIX ASPHALT SURFACE COURSE 1/2"
- TEMPORARY PAVEMENT MARKING - LINE 5"
- PROPOSED HOT MIX ASPHALT SHOULDER 6"
- PROPOSED HOT MIX ASPHALT BASE COURSE 10"
- PROPOSED P.C.C. PAVEMENT 12" (SPECIAL)
- PROPOSED BRIDGE APPROACH PAVEMENT (SPECIAL)
- PROPOSED SUB-BASE GRANULAR MATERIAL TYPE A 4"
- PROPOSED AGGREGATE SHOULDERS, TYPE B (SPECIAL)
- PROPOSED BRIDGE APPROACH PAVEMENT CONNECTOR (FLEXIBLE)



PROPOSED TYPICAL ROADWAY SECTION
 (STA. 84+62.07 TO STA. 84+92.07 & STA. 85+97.93 TO STA. 86+27.93)



SECTION A-A

DETAILS & TYPICAL ROADWAY SECTIONS
 F.A.P. 315 - (U.S. 136)
 OVER PRAIRIE CREEK DITCH
 SECTION 116(BR-1)
 LOGAN COUNTY
 STA. 85+45.00
 S.N. 054-0024

PLOT DATE = 7/9/2007
 FILE NAME = sht 005-007.dgn
 MODEL NAME = SECTIONS