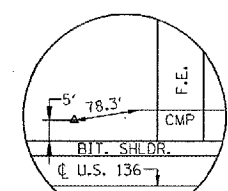


F.A.P. RTE.	SECTION	COUNTY	TOTAL SHEETS	SHEET NO.
315	116(BR-1)	LOGAN	79	12
STA. 81+00		TO STA. 85+50		
FED. ROAD DIST. NO. ILLINOIS FED. AID PROJECT				

SECTION 32 T.22N. R.4W. 3rd P.M.

VERAMAE ALEXANDER



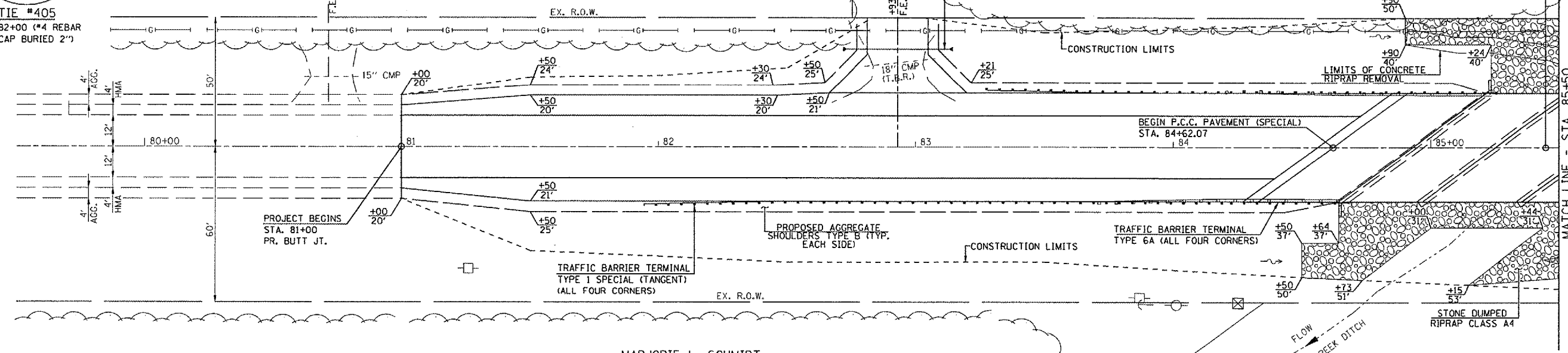
TIE #405  
STA. 82+00 (#4 REBAR  
W/ CAP BURIED 2")

MARY R. RADEMAKER



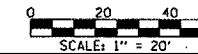
INSTALL NEW 18"Ø X 40' PIPE CULVERTS,  
CS/A, TYPE 1 W/ METAL END SECTIONS  
R INLET - EL. 563.4 (STA. 82+73, 38' LT.)  
R OUTLET - EL. 562.7 (STA. 83+13, 38' LT.)

S.N. 054-0024, @ STA. 85+45.00  
PROPOSED 3 SPAN P.C.C. DECK  
BEAM BRIDGE (17" 105'-10 1/4" BK-BK  
ABUTS., 42'-0" OUT-OUT DECK, STEEL  
RAILING TYPE SM. SKEW 54° LT. FORWARD



MARJORIE L. SCHMIDT

PLAN



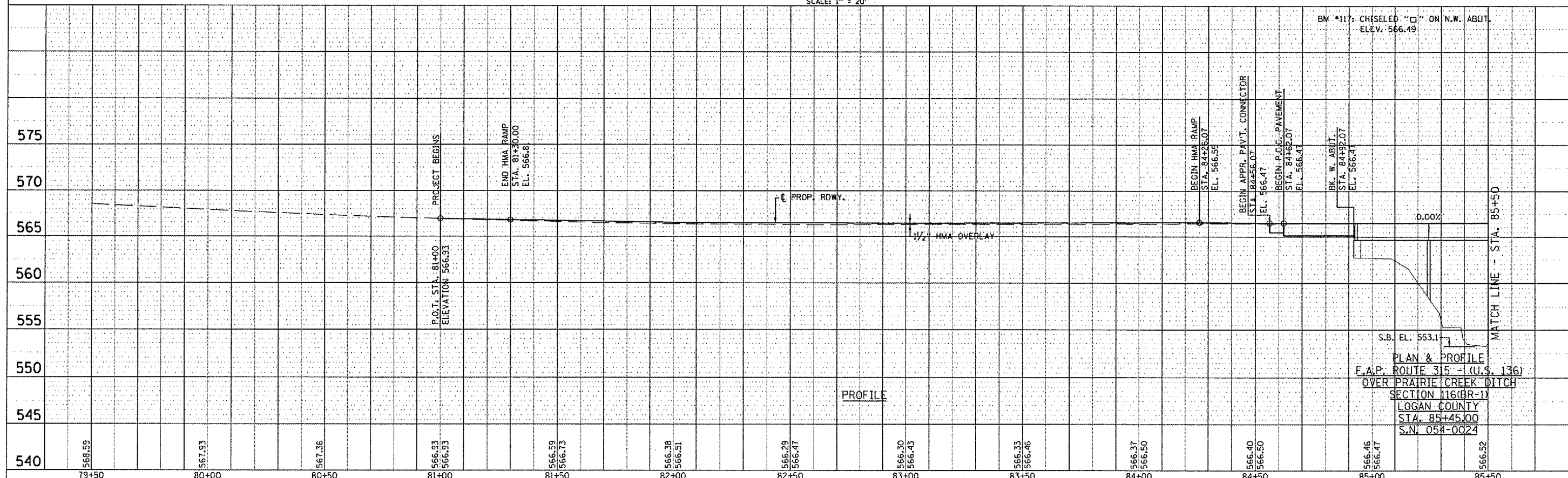
SECTION 5 T.22N. R.4W. 3rd P.M.

LEROY W. FAULKIN

MATCH LINE - STA. 85+50

DATE	BY

DATE	BY



PROFILE

PLAN & PROFILE  
OVER PRAIRIE CREEK DITCH  
SECTION 116(BR-1)  
LOGAN COUNTY  
STA. 85+45.00  
S.N. 054-0024

MATCH LINE - STA. 85+50

PLOT DATE = Sep-21-2007 02:58:38PM  
FILE NAME = 0024 pr-dgn  
MODEL NAME = Default