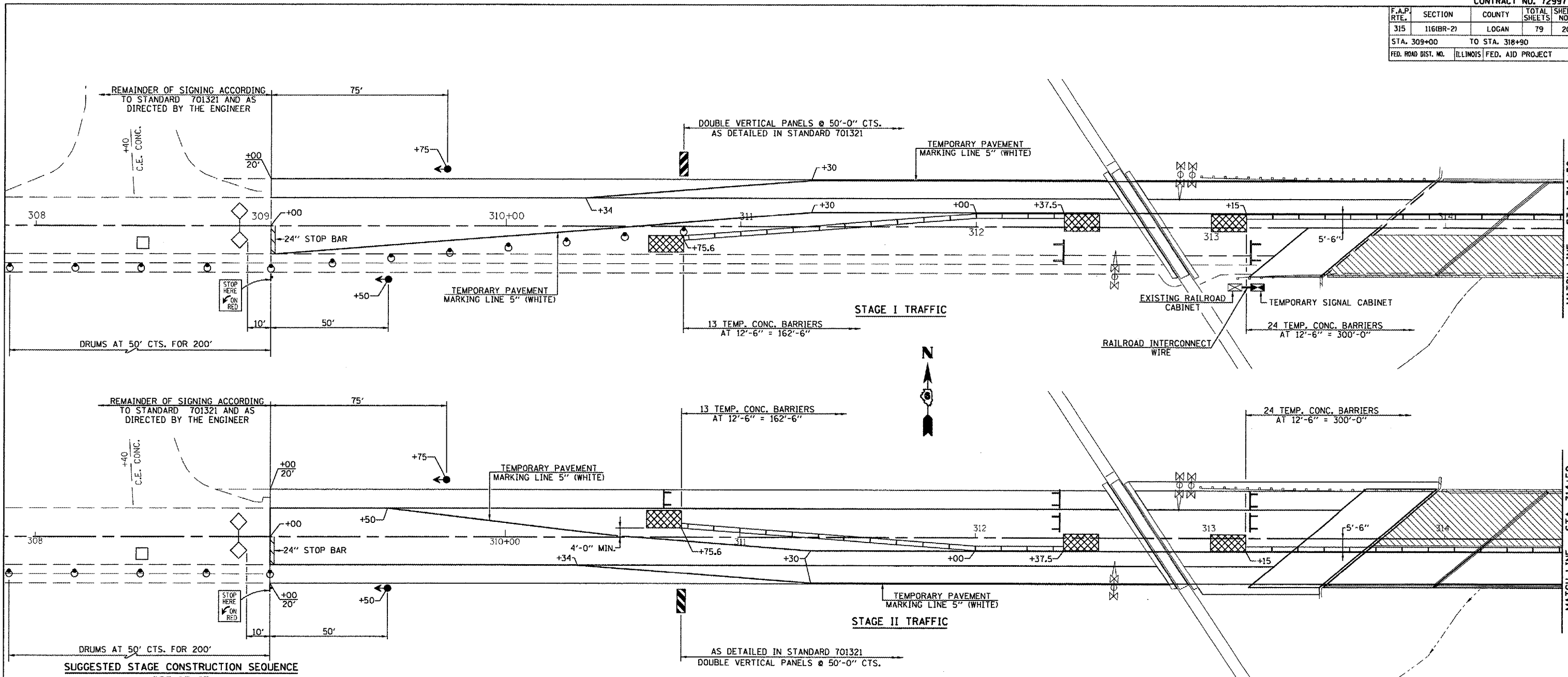


F.A.P. RTE.	SECTION	COUNTY	TOTAL SHEETS	SHEET NO.
315	116(BR-2)	LOGAN	79	20
STA. 309+00		TO STA. 318+90		
FED. ROAD DIST. NO.		ILLINOIS FED. AID PROJECT		



**SUGGESTED STAGE CONSTRUCTION SEQUENCE**

**PRE-STAGE**

1. REMOVE EXISTING AGGREGATE AND PAVED SHOULDER AND REPLACE WITH HOT MIX ASPHALT BASE COURSE 10" FROM STA. 309+00 TO STA. 318+90 LT. EXCLUDING EXISTING STRUCTURE.

**STAGE I**

1. ERECT TRAFFIC CONTROL FOR STAGE I CONSTRUCTION AND INSTALL TEMPORARY PAVEMENT MARKING.
2. REMOVE EXISTING DECK RIGHT, @ STA. 314+50.
3. CONSTRUCT PROPOSED STAGE I PRECAST PRESTRESSED DECK @ STA. 314+50, CONCRETE WEARING SURFACE AND APPROACH PAVEMENT.
4. CONSTRUCT TEMPORARY RAMPS AT ENDS OF APPROACH PAVEMENT.
5. CONSTRUCT PROPOSED SHOULDERS, GUARDRAIL & TERMINALS RT.

**STAGE II**

1. ERECT TRAFFIC CONTROL FOR STAGE II CONSTRUCTION AND INSTALL TEMPORARY PAVEMENT MARKING.
2. REMOVE EXISTING DECK LEFT, @ STA. 314+50.
3. CONSTRUCT PROPOSED STAGE II PRECAST PRESTRESSED DECK @ STA. 314+50, CONCRETE WEARING SURFACE AND APPROACH PAVEMENT.
4. CONSTRUCT TEMPORARY RAMPS AT APPROACH ROADWAY.
5. CONSTRUCT PROPOSED SHOULDERS, GUARDRAIL & TERMINALS LT.

**FINAL**

1. REMOVE ALL STAGE TRAFFIC CONTROL AND RE-ESTABLISH NORMAL TRAFFIC PATTERNS.
2. COMPLETE HOT MIX ASPHALT SURFACE COURSE AND AGGREGATE SHOULDERS TYPE B (SPECIAL) ON APPROACH ROADWAY UNDER TRAFFIC WITH FLAGGERS.
3. FINAL STRIPING AND MISCELLANEOUS CLEANUP.

**GENERAL NOTES**

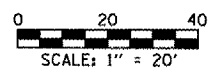
1. THIS TRAFFIC CONTROL DETAIL SHALL BE USED IN CONJUNCTION WITH STANDARD 701321.
2. EXISTING PAVEMENT MARKINGS THAT CONFLICT WITH THE REVISED STAGE TRAFFIC PATTERNS DURING ALL PHASES OF STAGE CONSTRUCTION SHALL BE REMOVED AS SPECIFIED IN SECTION 783 OF THE STANDARD SPECIFICATIONS AND PAID FOR AS "PAVEMENT MARKING REMOVAL."
3. THE CONTRACTOR SHALL MAINTAIN ACCESS TO ALL PRIVATE AND COMMERCIAL PROPERTIES DURING ALL PHASES OF CONSTRUCTION.
4. SIGNING FOR STAGE II SAME AS STAGE I.
5. LANE CLOSURES SHALL BE COORDINATED WITH PATCHING AND OVERLAY OPERATIONS.
6. WORK THIS SHEET WITH SHEETS 19 & 21 OF 79.

**SYMBOLS**

- WORK AREA
- SIGN
- TYPE III BARRICADE
- DRUM WITH STEADY BURNING LIGHT
- TRAFFIC SIGNAL
- TEMPORARY RUMBLE STRIP
- INDUCTION LOOP DETECTOR
- DOUBLE VERTICAL PANEL
- TYPE C BIDIRECTIONAL REFLECTOR
- TEMPORARY CONCRETE BARRIER
- IMPACT ATTENUATOR
- STEADY BURNING LIGHTS AND DOUBLE VERTICAL PANELS

**TEMPORARY PHASE DIAGRAM**

UPON RAILROAD PREEMPTION, SIGNALS SHALL IMMEDIATELY GO ALL RED AND REST IN THAT STATE. AFTER PREEMPT CALL IS DROPPED, SIGNALS SHALL TIME ALL RED CLEARANCE INTERVAL BEFORE SERVING EITHER PHASE.



PLOT DATE = 7/9/2007  
 FILE NAME = sht 020-021.dgn  
 MODEL NAME = Default

**STAGING DETAILS**  
 F.A.P. ROUTE 315 - (U.S. 136)  
 OVER PRAIRIE CREEK  
 SECTION 116(BR-2)  
 LOGAN COUNTY  
 STA. 314+50  
 S.N. 054-0025