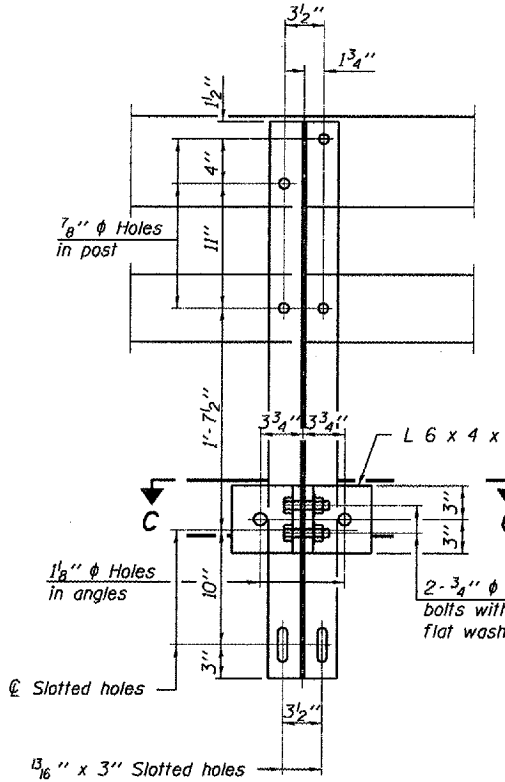
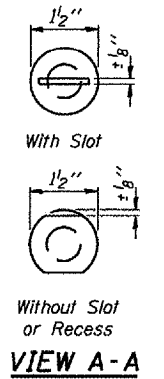
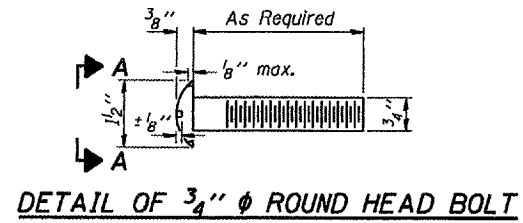
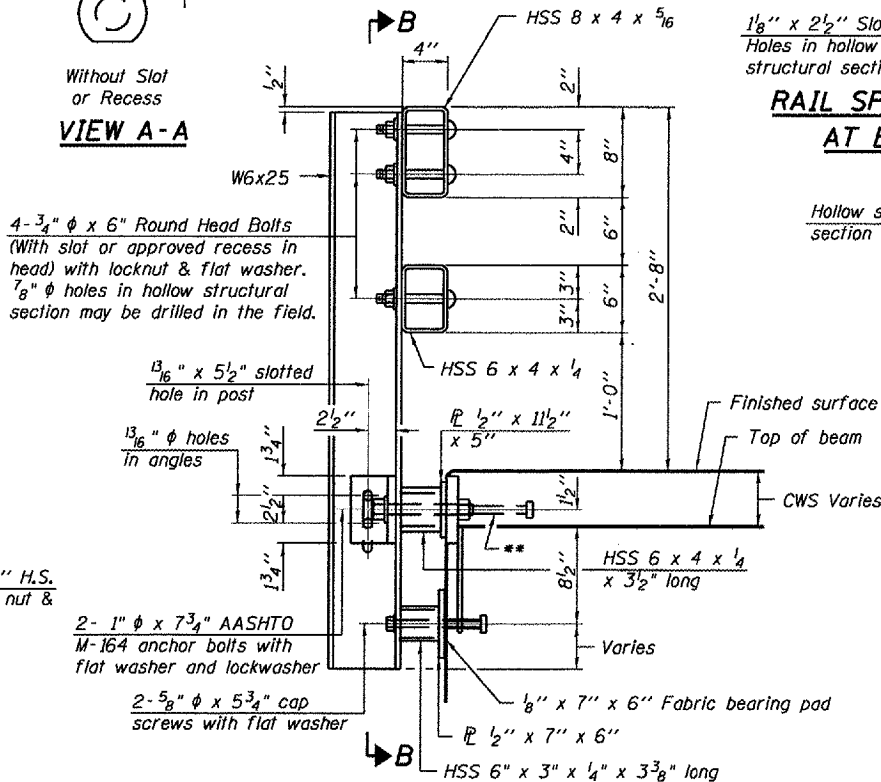


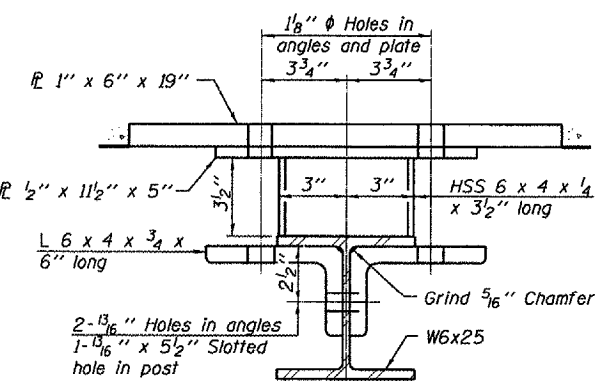
F.A.P. RTE.	SECTION	COUNTY	TOTAL SHEETS	SHEET NO.
315	116(BR-1)	LOGAN	79	36
STA. 81+00	TO STA. 90+00			
FED. ROAD DIST. NO.	ILLINOIS	FED. AID PROJECT		



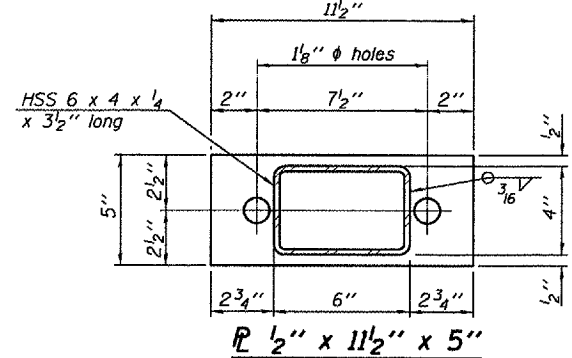
SECTION B-B



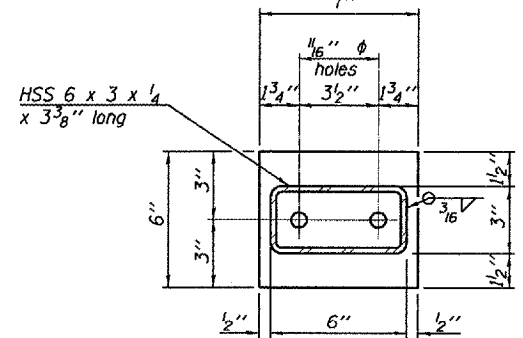
SECTION AT RAIL POST



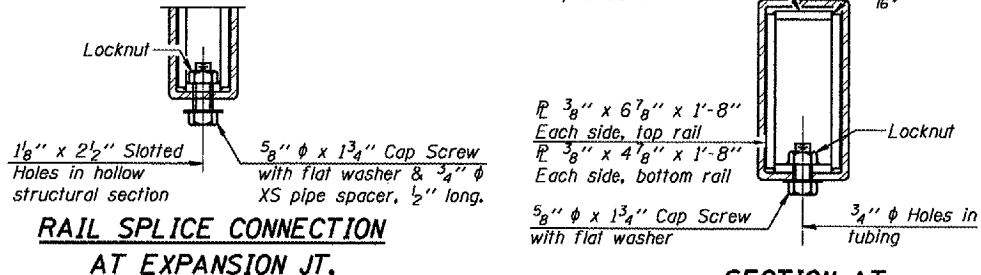
SECTION C-C



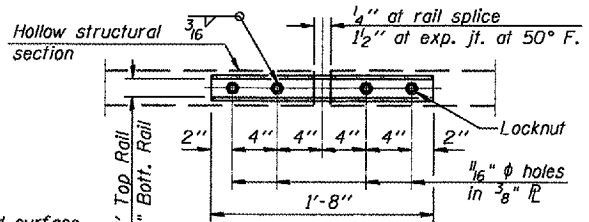
VIEW D-D



VIEW E-E

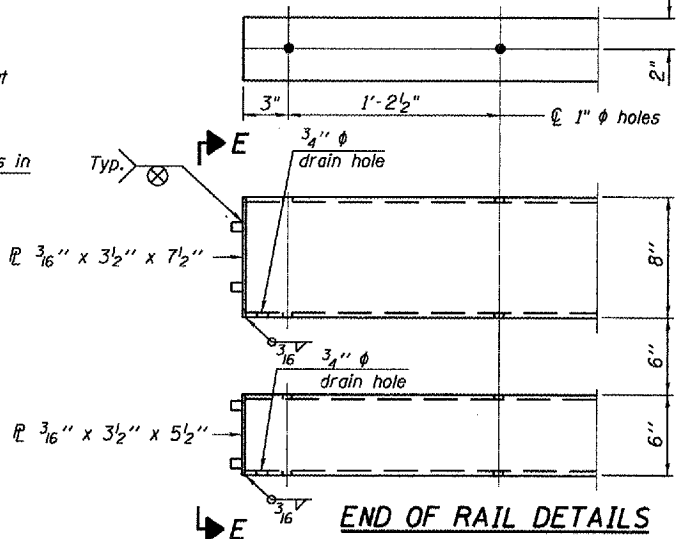


RAIL SPLICE CONNECTION AT EXPANSION JT.

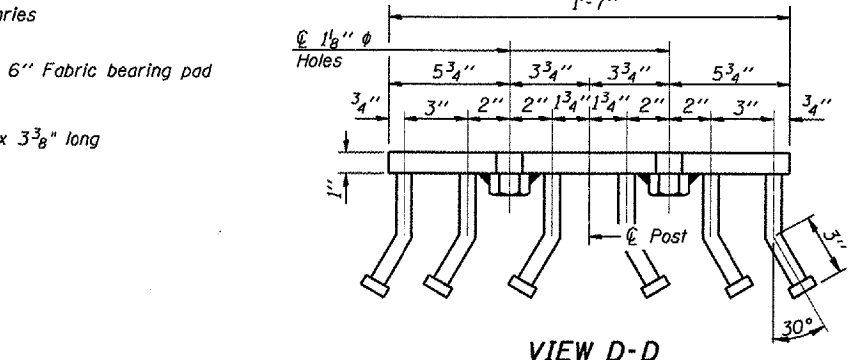


PLAN-BOTT. SPLICE P TYPICAL

SECTION AT RAIL SPLICE



END OF RAIL DETAILS



ANCHOR DEVICE

Notes:
 All field drilled holes shall be coated with an approved zinc rich paint before erection.
 For multi-span bridges, sufficient 1/4" x 6" x 1'-2" galvanized steel shims shall be provided to align rail between adjacent spans. Cast included with Steel Bridge Rail, Type SM.
 Steel rail elements shall be galvanized according to Article 509.05 of the Standard Specifications.
 The studs of the anchor devices shall be placed below the top reinforcement bars and the outermost longitudinal reinforcement bar shall be placed directly above the studs of the rail post anchor device.

BILL OF MATERIAL

Item	Unit	Quantity
Steel Railing, Type SM	Foot	212

STEEL RAILING, TYPE SM WITH CONCRETE WEARING SURFACE
 F.A.P. ROUTE 315 - (U.S. 136)
 OVER PRAIRIE CREEK DITCH
 SECTION 116(BR-1)
 LOGAN COUNTY
 STA. 85+45.00
 S.N. 054-0024

* Threaded areas shall be plugged or blocked off during casting of beam. Galvanized after fabrication.

PLOT DATE: 7/9/2007
 USER: ahenderson
 PLOT: R-34CWS
 PLOT: 7/9/2007 8:05:00 AM

R-34CWS

11-1-06 (6'-3" Maximum Post Spacing) (5" minimum to 7 1/2" maximum CWS thickness)