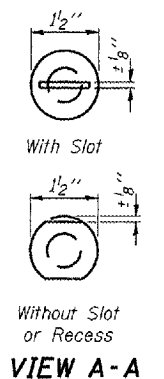
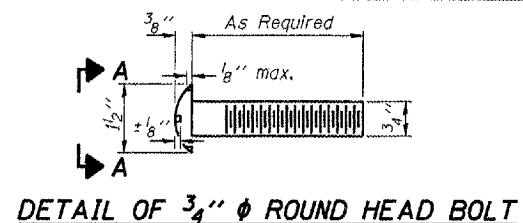
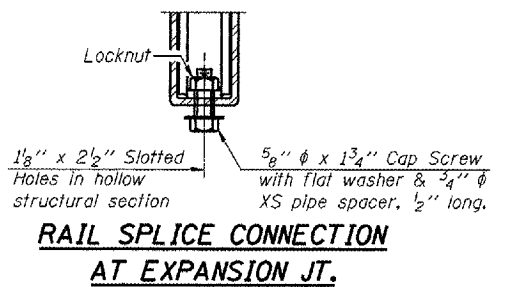


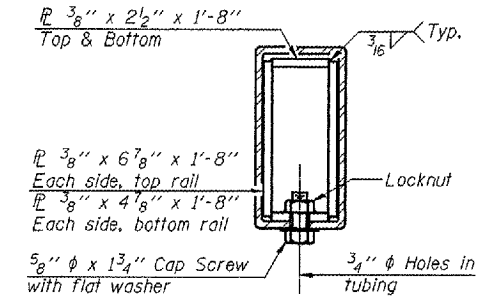
F.A.P. RTE.	SECTION	COUNTY	TOTAL SHEETS	SHEET NO.
315	116(BR-1)	LOGAN	79	51
STA. 309+00		TO STA. 318+90		
FED. ROAD DIST. NO.		ILLINOIS FED. AID PROJECT		



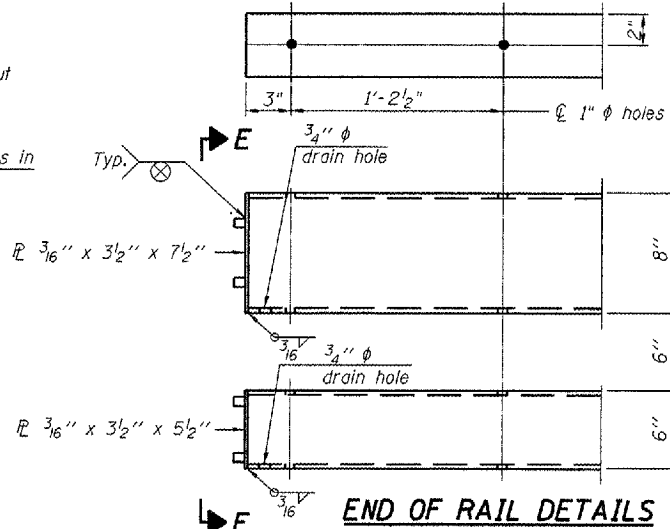
4- 3/4"  $\phi$  x 6" Round Head Bolts (With slot or approved recess in head) with locknut & flat washer. 1/8"  $\phi$  holes in hollow structural section may be drilled in the field.



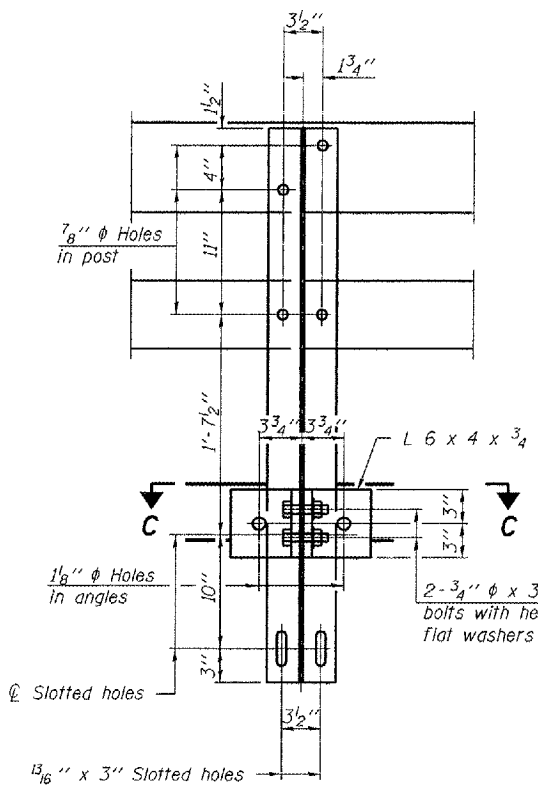
RAIL SPLICE CONNECTION AT EXPANSION JT.



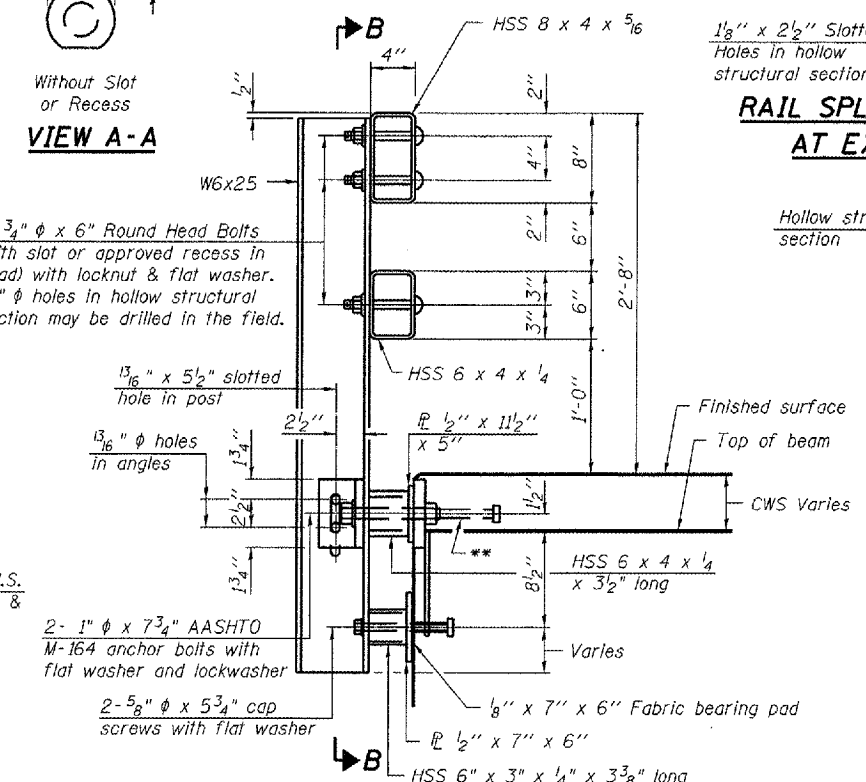
SECTION AT RAIL SPLICE



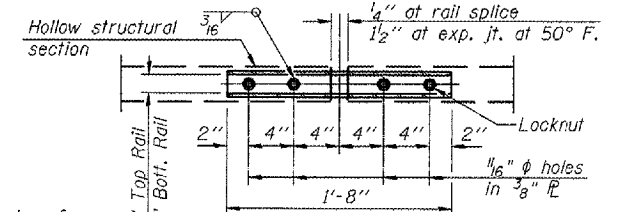
END OF RAIL DETAILS



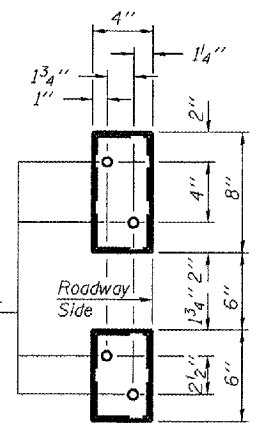
SECTION B-B



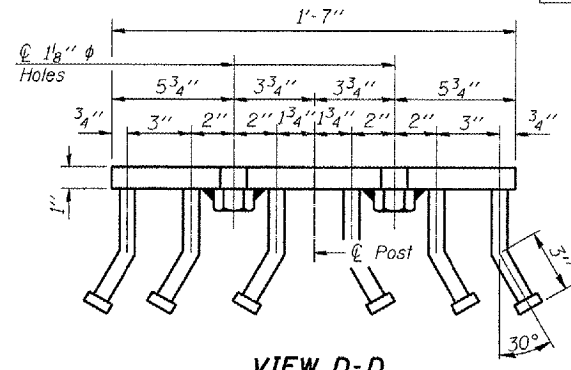
SECTION AT RAIL POST



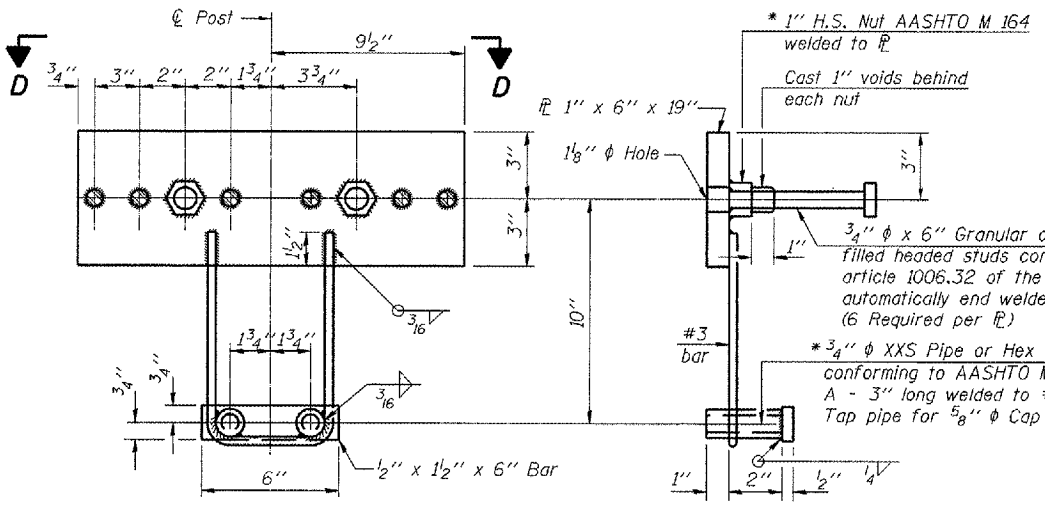
PLAN-BOTT. SPLICE P TYPICAL



VIEW E-E



VIEW D-D



ANCHOR DEVICE

Notes:  
 All field drilled holes shall be coated with an approved zinc rich paint before erection.  
 For multi-span bridges, sufficient 1/4" x 6" x 1'-2" galvanized steel shims shall be provided to align rail between adjacent spans. Cost included with Steel Bridge Rail, Type SM.  
 Steel rail elements shall be galvanized according to Article 509.05 of the Standard Specifications.  
 \*\* The studs of the anchor devices shall be placed below the top reinforcement bars and the outermost longitudinal reinforcement bar shall be placed directly above the studs of the rail post anchor device.

BILL OF MATERIAL

Item	Unit	Quantity
Steel Railing, Type SM	Foot	319

STEEL RAILING, TYPE SM WITH CONCRETE WEARING SURFACE  
 F.A.P. ROUTE 315 - (U.S. 136)  
 OVER PRAIRIE CREEK  
 SECTION 116(BR-2)  
 LOGAN COUNTY  
 STA. 314+50.00  
 S.N. 054-0025

PLOT DATE = 7/1/2007  
 FILE NAME = C:\Users\ahenderson\Documents\Allen\11-1-06\11-1-06.dgn  
 MODEL NAME = 11-1-06  
 MODEL NUMBER = 11-1-06

R-34CWS 11-1-06 (6'-3" Maximum Post Spacing) (5" minimum to 7 1/8" maximum CWS thickness)

\* Threaded areas shall be plugged or blocked off during casting of beam. Galvanized after fabrication.