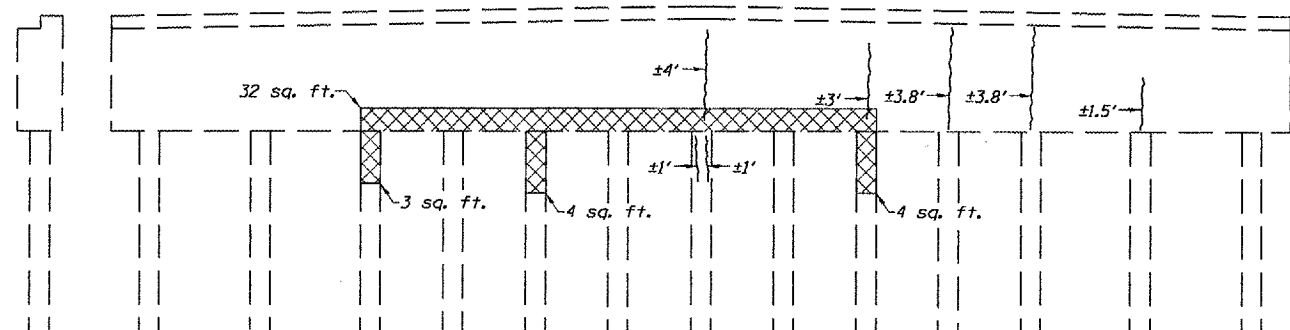
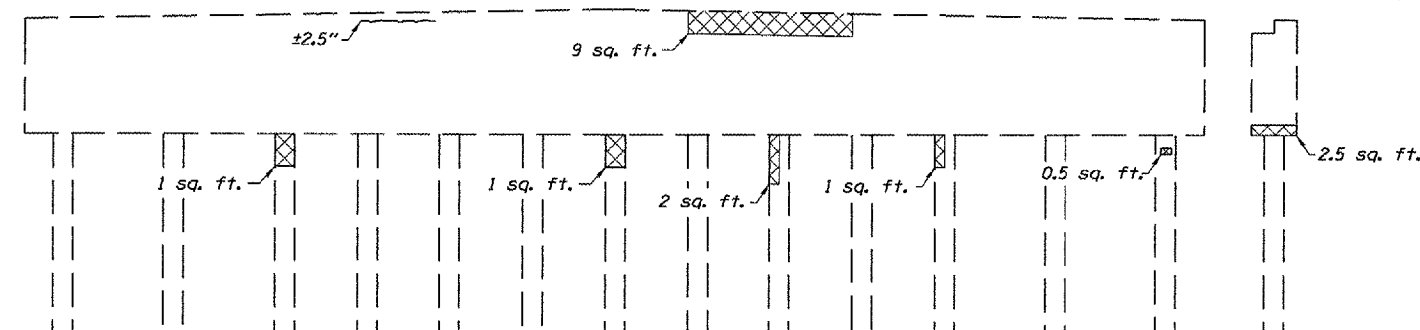


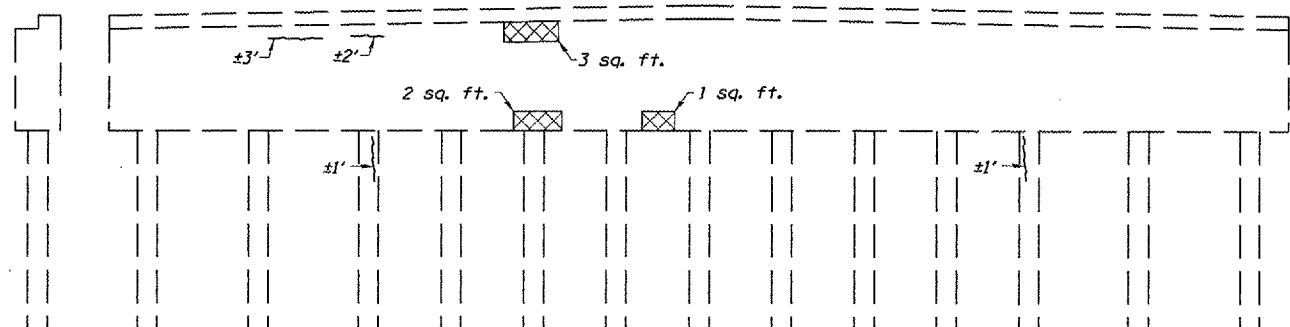
F.A.P. RTE.	SECTION	COUNTY	TOTAL SHEETS	SHEET NO.
315	116(BR-2)	LOGAN	79	58
STA. 309+00		TO STA. 318+90		
FED. ROAD DIST. NO.		ILLINOIS FED. AID PROJECT		



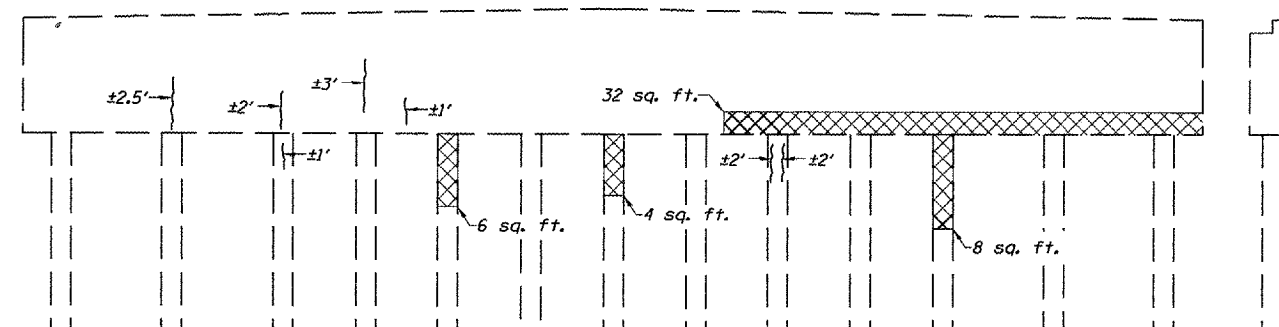
WEST PIER ELEVATION
(East Face Looking West)



WEST PIER ELEVATION
(West Face Looking East)



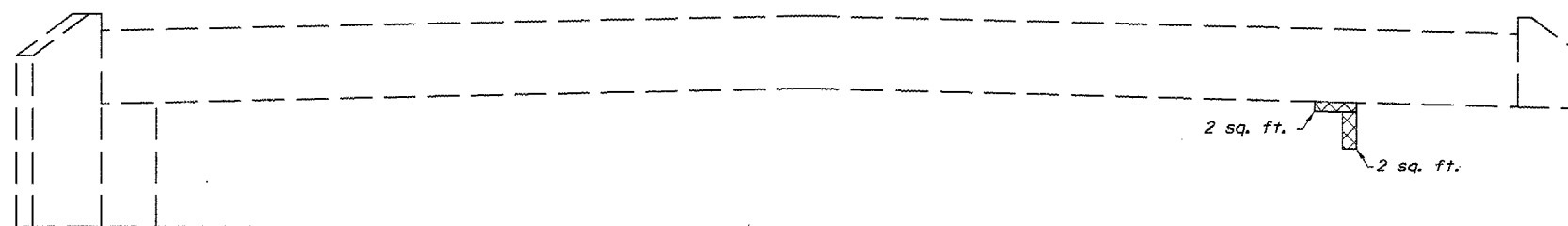
EAST PIER ELEVATION
(East Face Looking West)



EAST PIER ELEVATION
(West Face Looking West)



EAST ABUTMENT ELEVATION
(Looking East)



WEST ABUTMENT ELEVATION
(Looking West)

- LEGEND**
- Structural Repair of Concrete (Depth equal to or less than 5")
 - $\pm 5'$ Epoxy Crack Injection (Crack widths shown are approx. 1/8" to 1/4" in width)

BILL OF MATERIAL

ITEM	UNIT	QUANTITY
Epoxy Crack Injection	Foot	52
Structural Repair of Concrete (Depth Equal To Or Less Than 5")	Sq. Ft.	119

SUBSTRUCTURE REPAIR
F.A.P. ROUTE 315 - (U.S. 136)
OVER PRAIRIE CREEK
SECTION 116(BR-2)
LOGAN COUNTY
STA. 314+50.00
S.N. 054-0025

PLOT DATE = 7/9/2007
 FILE NAME = c:\p\projects\052183\allen_henderson_final\shs_843-958.dgn
 PLOT NAME = 8/22/07-72997-888-888.dwg