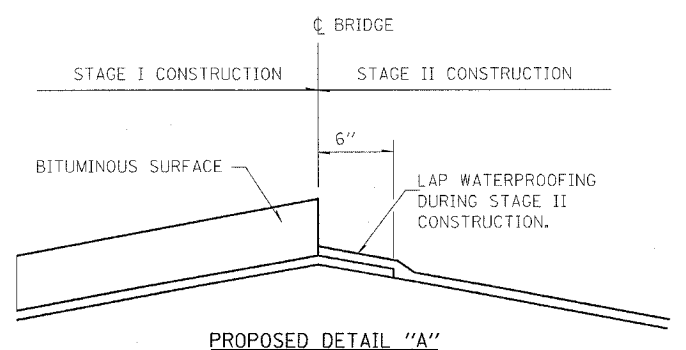
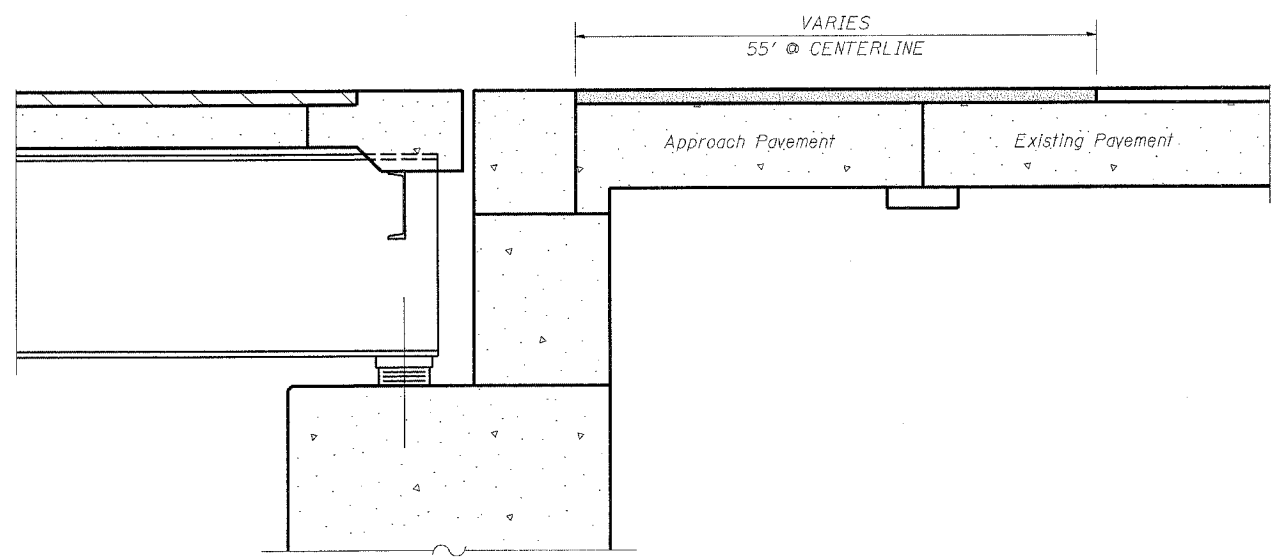


PLAN VIEW

- HOT-MIX ASPHALT SURFACE REMOVAL, 1 3/4"
- HOT-MIX ASPHALT SURFACE REMOVAL 1 1/2"



PROPOSED DETAIL "A"



SECTION B-B

FILE NAME = #FILE#	USER NAME = #USER#	DESIGNED -	REVISED -
		DRAWN -	REVISED -
	PLOT SCALE = #SCALE#	CHECKED -	REVISED -
	PLOT DATE = #DATE#	DATE -	REVISED -

**STATE OF ILLINOIS  
DEPARTMENT OF TRANSPORTATION**

OVERLAY DETAILS				
SCALE:	SHEET NO.	OF SHEETS	STA.	TO STA.

F.A.P. RTE. 752	SECTION	COUNTY	TOTAL SHEETS	SHEET NO.
		FAYETTE	9	9
CONTRACT NO. 74276				
FED. ROAD DIST. NO. ILLINOIS FED. AID PROJECT				