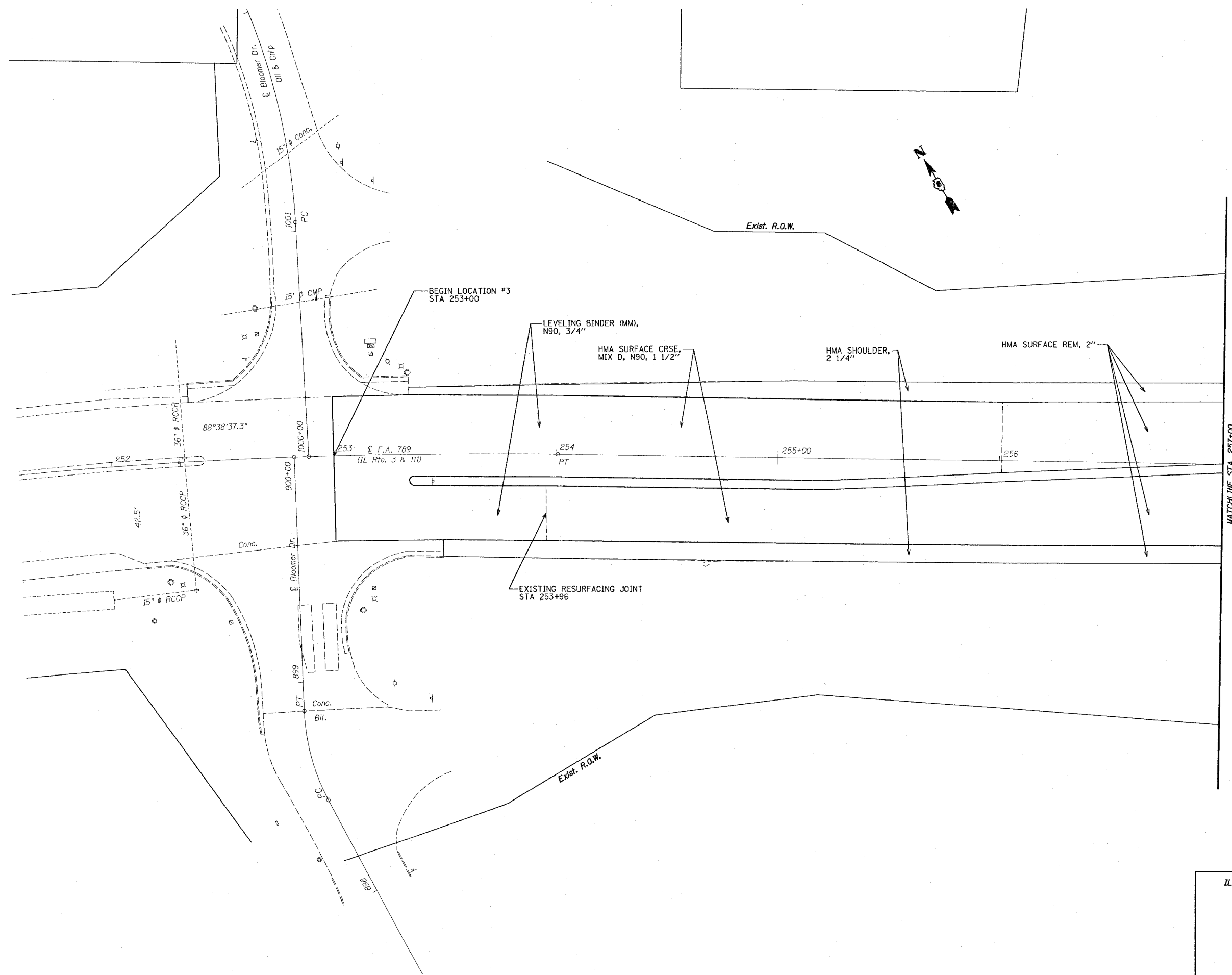


F.A.P. NO.	SECTION	COUNTY	TOTAL SHEETS	SHEET NO.
789	IRS-1	MADISON	26	12
STA. 253+00		TO STA. 257+00		
EXISTING CONDITIONS:				

PLAN	DATE
SUBMITTED	
PLOTTED	
NOTE BOOK	
NO. _____	
FILE NAME	



ILLINOIS DEPARTMENT OF TRANSPORTATION

PLAN SHEETS
LOCATION #3

F.A. 789 (IL RTE. 3 & 111)
SECTION IRS-1
MADISON COUNTY

PLOT DATE: 4/5/2007

4/5/2007
4/5/2007
c:\p1\proj\789\p1\789\plan\789\plan.dwg
*REF.
*REF.