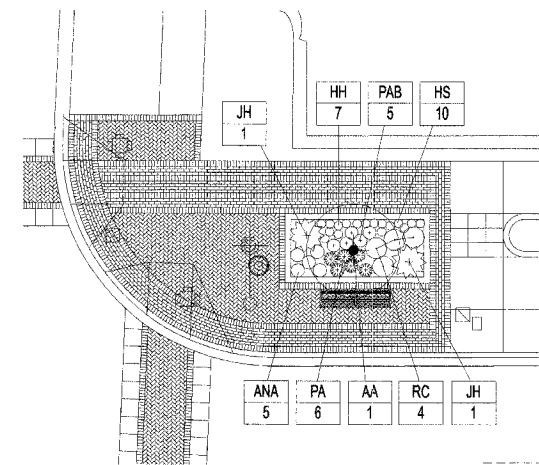
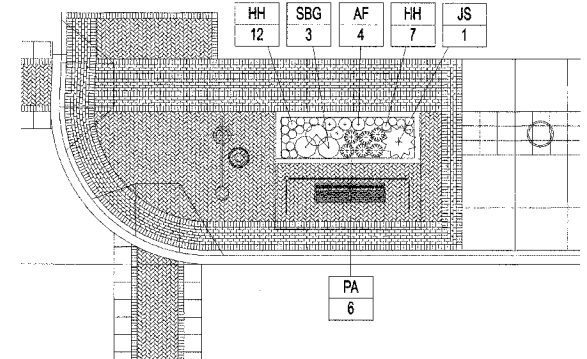


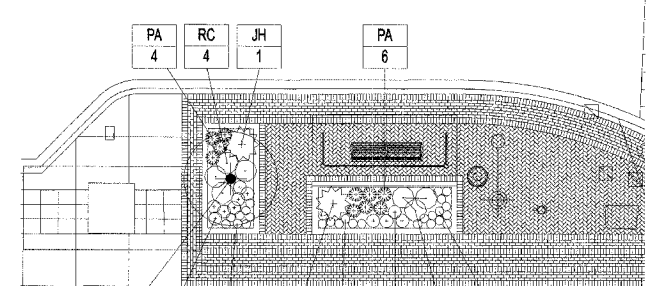
PLANTERS 1 & 2



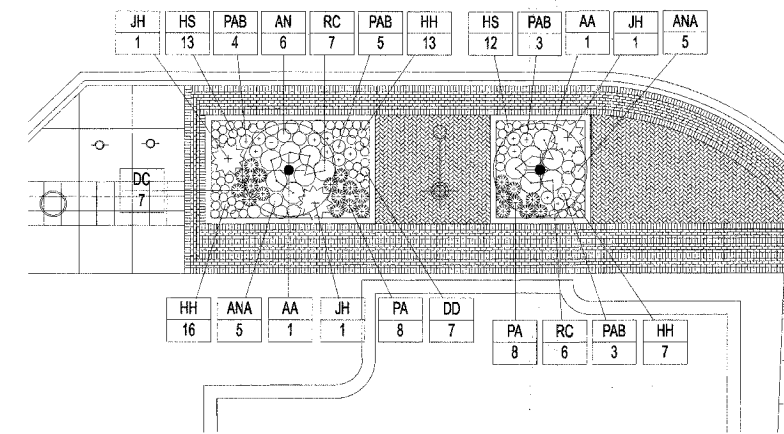
PLANTER 5



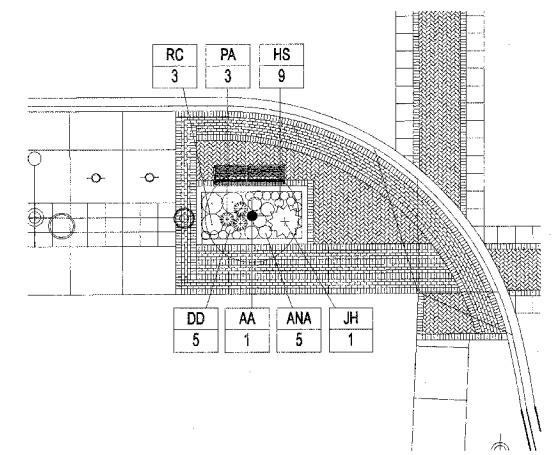
PLANTER 9



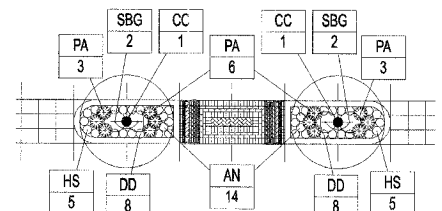
PLANTERS 3 & 4



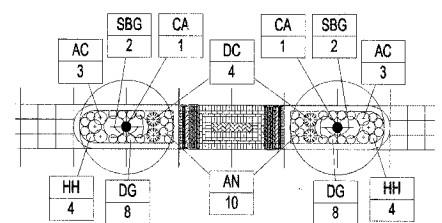
PLANTERS 6 & 7



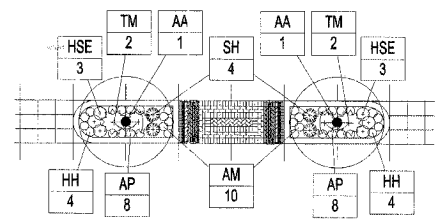
PLANTER 8



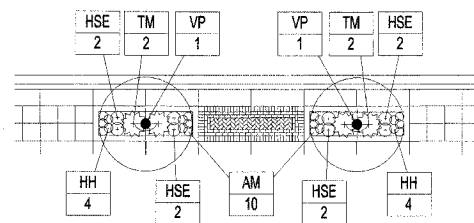
PLANTER GROUP 'A'



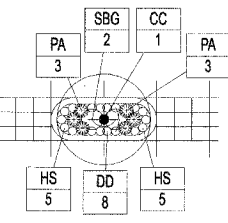
PLANTER GROUP 'B'



PLANTER GROUP 'C'



PLANTER GROUP 'D'



PLANTER GROUP 'E'

PLANTING SCHEDULE

SYM.	BOTANICAL NAME	COMMON NAME	QTY.	SIZE	COND.	SPACING
TC	<i>Tilia cordata</i> 'Giantleven'	Giantleven Little Leaf Linden	7	2" Cal.	B/B	As shown
Ornamental Trees						
SYM.	BOTANICAL NAME	COMMON NAME	QTY.	SIZE	COND.	SPACING
AA	<i>Amelanchier</i> x.g. 'Autumn Brilliance'	Autumn Brilliance Serviceberry	11	5' Ht.	B/B	As shown
CA	<i>Cornus alternifolia</i>	Pagoda Dogwood	8	6' Ht.	B/B	As shown
CC	<i>Carpinus caroliniana</i>	Carpinus caroliniana	25	1.75" Cal.	B/B	As shown
Shrubs						
SYM.	BOTANICAL NAME	COMMON NAME	QTY.	SIZE	COND.	SPACING
SBG	<i>Spiraea x bumalda</i> 'Goldflame'	Goldflame Spirea	48	18" Ht.	Container	30" o.c.
JH	<i>Juniperus horizontalis</i> 'Wilson's Blue Rug'	Blue Rug Juniper	7	18" Width	B/B	48" o.c.
JS	<i>Juniperus sabin</i> 'Broadmoor'	Broadmoor Juniper	2	15" Width	B/B	54" o.c.
RC	<i>Rosa</i> 'Carefree Wonder'	Carefree Wonder Rose	32	18" Ht.	Container	30" o.c.
TM	<i>Taxus x media</i> 'Brownii'	Brown Angiojapanese Yew	20	2' Width	B/B	30" o.c.
VP	<i>Viburnum prunifolium</i>	Blackhaw Viburnum, on standard	4	6' Ht.	B/B	As shown
Perennials						

SYM.	BOTANICAL NAME	COMMON NAME	QTY.	SIZE	COND.	SPACING
AC	<i>Aquilegia canadensis</i>	Canadian Columbine	24	1 Gal.	Container	15" o.c.
AF	<i>Aquilegia flabellata</i> 'Blue Angel'	Blue Angel Columbine	8	1 Gal.	Container	15" o.c.
AM	<i>Alchemilla mollis</i> 'Austere'	Compost Lady's Mantle	50	1 Gal.	Container	15" o.c.
AN	<i>Aster novae-angliae</i> 'Purple Dome'	Purple Dome Aster	126	1 Gal.	Container	15" o.c.
ANA	<i>Aster novi-belgii</i> 'Aler'	Aler Aster	20	1 Gal.	Container	15" o.c.
AP	<i>Aegopodium podagraria</i>	Bishop's Weed (green)	48	1 Gal.	Container	12" o.c.
DD	<i>Dianthus deltoides</i> 'Zing'	Zing Rose	196	1 Gal.	Container	12" o.c.
DG	<i>Dianthus gratiopolitanus</i> 'Stemless'	Stemless Cheddar Pink	74	1 Gal.	Container	12" o.c.
DC	<i>Deschampsia cespitosa</i> 'Goldshange'	Tufted Hair Grass	23	1 Gal.	Container	18" o.c.
HH	<i>Hemerocallis</i> 'Happy Returns'	Happy Returns Yellow Daylily	183	1 Gal.	Container	18" o.c.
HS	<i>Hemerocallis</i> 'Stella d'Oro'	Low Yellow-Gold Daylily	246	1 Gal.	Container	18" o.c.
HSE	<i>Hosta sieboldiana</i> 'Elegant'	Blue Giant Hosta	18	1 Gal.	Container	30" o.c.
PA	<i>Pennisetum alopecuroides</i> 'Hamlet'	Hamlet Dwarf Fountain Grass	189	1 Gal.	Container	18" o.c.
PAB	<i>Perovskia atriplicifolia</i> 'Blue Spire'	Parovskia 'Blue Spire'	27	1 Gal.	Container	18" o.c.
SH	<i>Sporobolus heterolepis</i>	Prairie Dropseed	12	1 Gal.	Container	18" o.c.
			Total Number of Perennials	1,244		
			Total Number of Poy Items	12		

NOTES:
 SEE SPECIFICATIONS FOR DETAILED PLANTING INSTRUCTIONS



REVISIONS	
NAME	DATE

ILLINOIS DEPARTMENT OF TRANSPORTATION
 STREETSCAPE PLANTING PLAN
 LAWRENCE AVENUE

SCALE: VERT. 1" = 30'
 DATE: 1/08/07
 DRAWN BY: JDS
 CHECKED BY: JDS

PLT DATE = 10/20/07
 FILE NAME = N:\MARKETING\PROJECTS\83905\N062791.SP
 PLOT SCALE = 1" = 30'
 USER NAME = PMAGNELLI