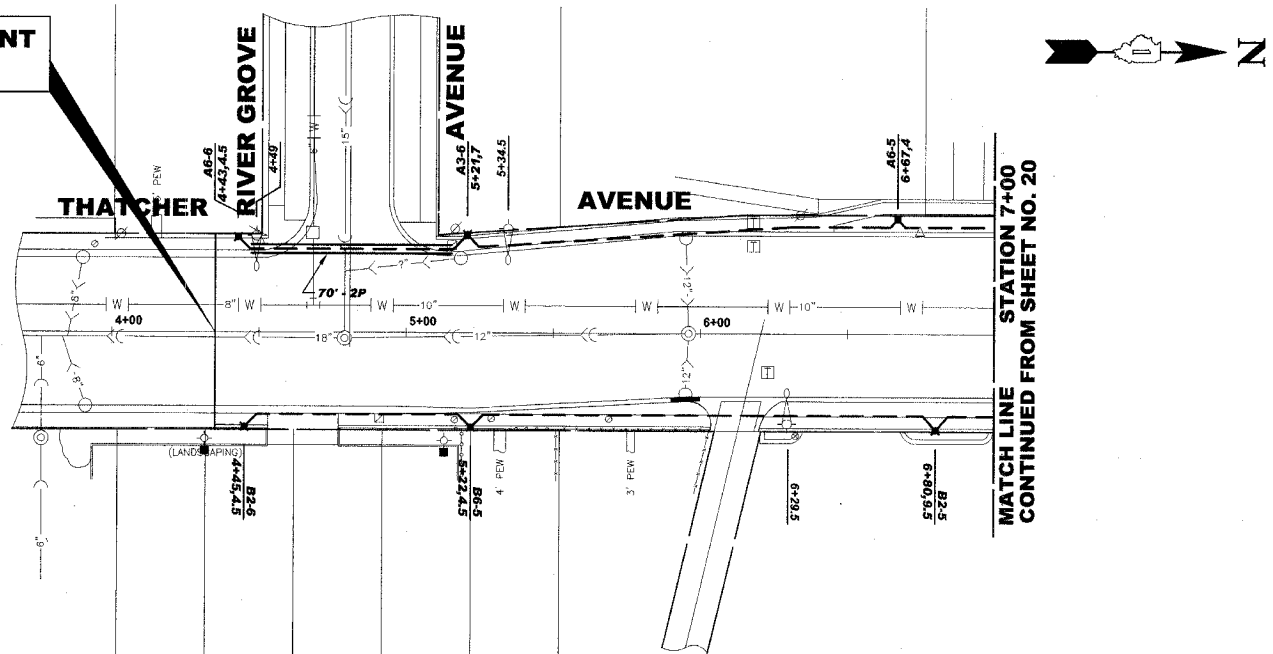
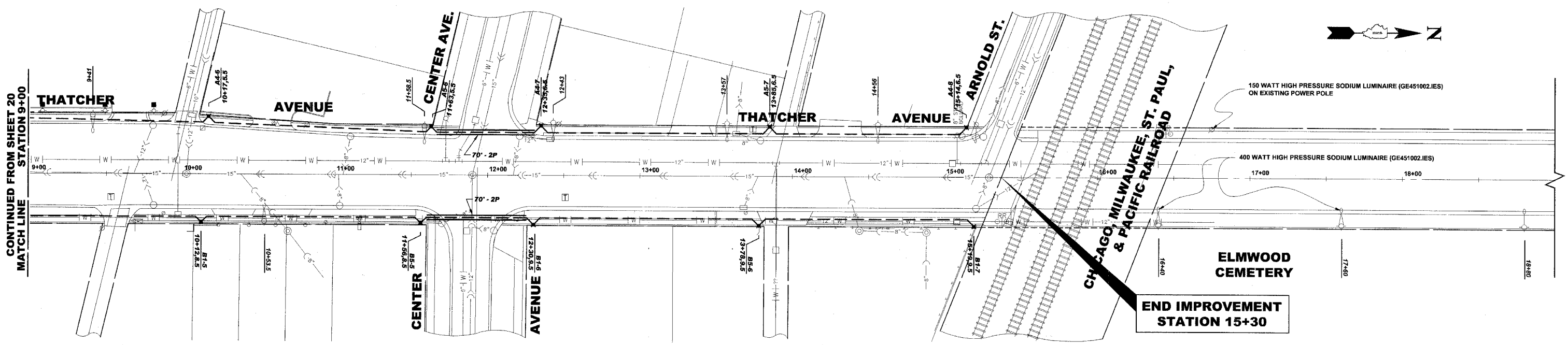


**BEGIN IMPROVEMENT
STATION 4+35**



**MATCH LINE
STATION 7+00
CONTINUED FROM SHEET NO. 20**

LEGEND OF SYMBOLS	
	PROPOSED DECORATIVE LIGHT POLE, ALUMINUM, 12' MOUNTING HEIGHT WITH DECORATIVE ACORN STYLE LUMINAIRE, SODIUM VAPOR, TENON MOUNT, 70 WATT
	EXISTING 35' MOUNTING HEIGHT POLE WITH 8' MAST ARM AND 400 WATT HIGH PRESSURE SODIUM LAMP (GE451002.IES)
	EXISTING 35' MOUNTING HEIGHT POLE WITH 8' MAST ARM AND 400 WATT MERCURY VAPOR LAMP
	PROPOSED CONTROL CENTER
	PROPOSED UNIT DUCT WITH 3-1/8" No. 4 & 1-1/8" No. 6 GROUND, 600V (XLP-TYPE USE), 1 1/2" DIAMETER OR AS NOTED, BORED & PULLED OR AS NOTED
	PROPOSED RIGID GALVANIZED STEEL CONDUIT IN TRENCH OR PUSHED AS NOTED
	CONTROLLER IDENTIFICATION (TYP.)
	CIRCUIT NUMBER (TYP.)
	POLE NUMBER (TYP.)
	SET BACK FROM BACK OF CURB (TYP.)
	STATION NUMBER (TYP.)



**CONTINUED FROM SHEET 20
MATCH LINE
STATION 9+00**

**END IMPROVEMENT
STATION 15+30**

revised 12/21/07



HANCOCK ENGINEERING
 ♦ Civil Engineers
 ♦ Municipal Consultants
 ♦ Established 1911
 9933 Roosevelt Road
 Westchester, Illinois 60154-2780
 Phone: 708/865-0300
 Fax: 708/865-1212

**GRAND AVENUE STREETScape PROJECT
VILLAGE OF RIVER GROVE, ILLINOIS**

**THATCHER AVENUE
LIGHTING PLAN**

SCALE:	1"=30'	SHEET 21 OF 35	
DRAWN BY:	LEV/ECW/MK		
BOOK NO.:	1441,1443,1516		
DATE:	10/15/07		
REVISION:	Addendum #1 - 12/14/07	E.H.E. NO.:	760-06-03320

Drawing file: W:\Projects\TE000033 - Grand Ave. Streetscape\GRAND-THATCHER\THATCHER.dwg Dec 13, 2007 - 11:45am