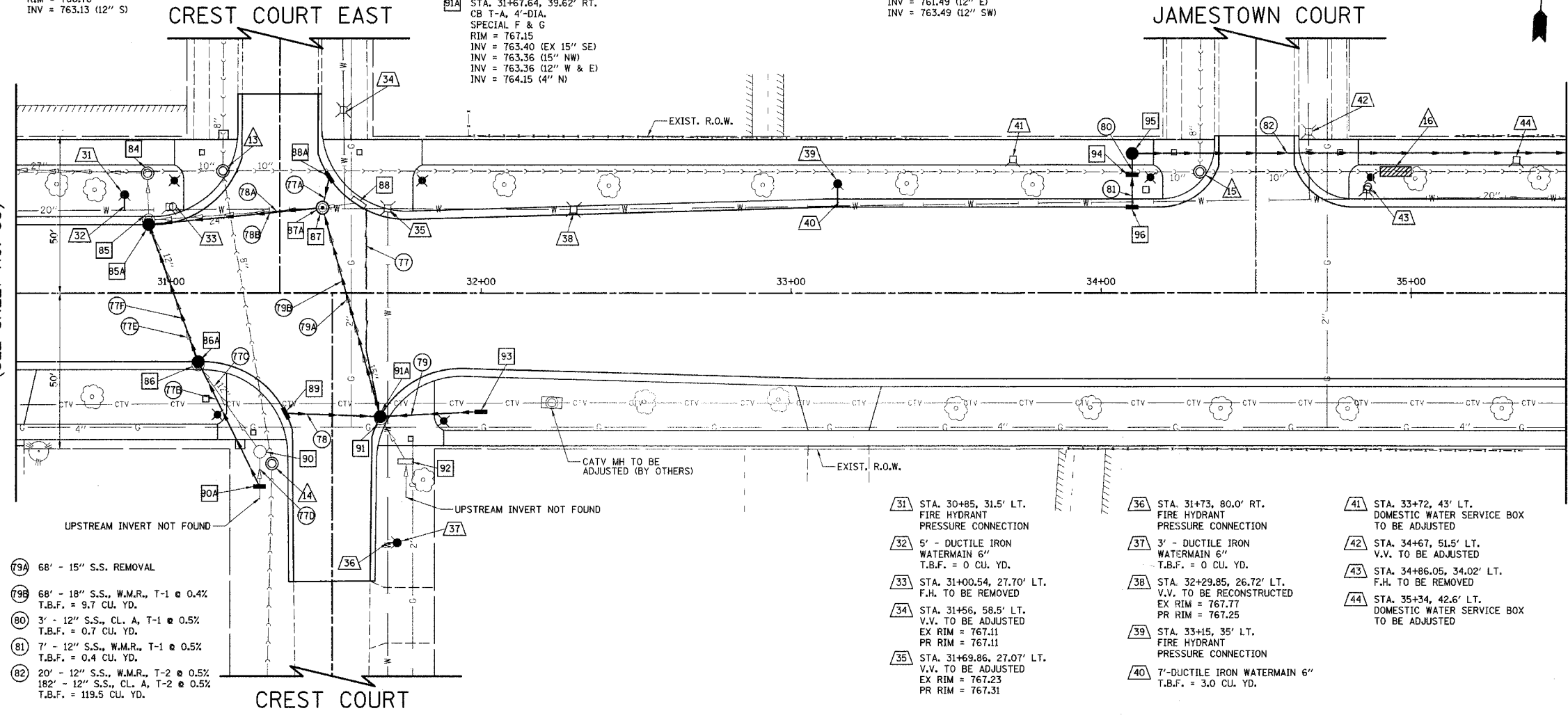


F.A.U. RTE.	SECTION	COUNTY	TOTAL SHEETS	SHEET NO.
1338	05-00083-00-FF	COOK	167	56
STA. 30+50		TO STA. 35+50		
FED. ROAD DIST. NO. 7 ILLINOIS FED. AID PROJECT M-8003(52)				

- 84 STA. 30+92.39, 38.31' LT. MH TO BE RECONSTRUCTED W/NEW T-8 GRATE EXIST. RIM = 767.61 PROP. RIM = 767.38 INV = 762.41 (EX 27" W) INV = 762.61 (27" S)
- 85 STA. 30+92.75, 23.41' LT. MH TO BE REMOVED
- 85A STA. 30+92.75, 22.00' LT. CB T-A, 5'-DIA. SPECIAL F & G RIM = 767.59 INV = 762.78 (EX 27" N) INV = 763.24 (15" S) INV = 762.83 (24" E)
- 86 STA. 31+08.74, 22.95' RT. MH TO BE REMOVED
- 86A STA. 31+08.74, 22.00' RT. CB T-A, 4'-DIA. SPECIAL F & G RIM = 767.81 INV = 763.48 (12" S) INV = 763.48 (15" N)
- 87 STA. 31+48.84, 27.31' LT. MH TO BE REMOVED
- 87A STA. 31+48.84, 27.31' LT. MH T-A, 5'-DIA. T-1 FR. C.L. RIM = 766.97 INV = 763.39 (EX 15" E) INV = 763.09 (12" N) INV = 763.09 (24" W) INV = 763.09 (18" S)
- 77 25' - PIPE UNDERDRAIN, 4"
- 77A 8' - 12" S.S., CL. A, T-1 @ 0.5% T.B.F. = 1.4 CU. YD.
- 77B 4' - 12" S.S., CL. A, T-1 @ 0.5% T.B.F. = 1.0 CU. YD.
- 77C 3' - 12" S.S. REMOVAL
- 77D 7' - 12" S.S. REMOVAL
- 77E 45' - 12" S.S. REMOVAL
- 77F 47' - 15" S.S., CL. A, T-1 @ 0.5% T.B.F. = 10.1 CU. YD.
- 78 30' - 12" S.S., CL. A, T-1 @ 0.5% T.B.F. = 4.3 CU. YD.
- 78A 51' - 24" S.S. REMOVAL
- 78B 51' - 24" S.S., W.M.R., T-1 @ 0.5% T.B.F. = 8.2 CU. YD.
- 78C 38' - PIPE UNDERDRAIN, 4"
- 79 28' - 12" S.S., W.M.R., T-1 @ 0.5% T.B.F. = 4.5 CU. YD.

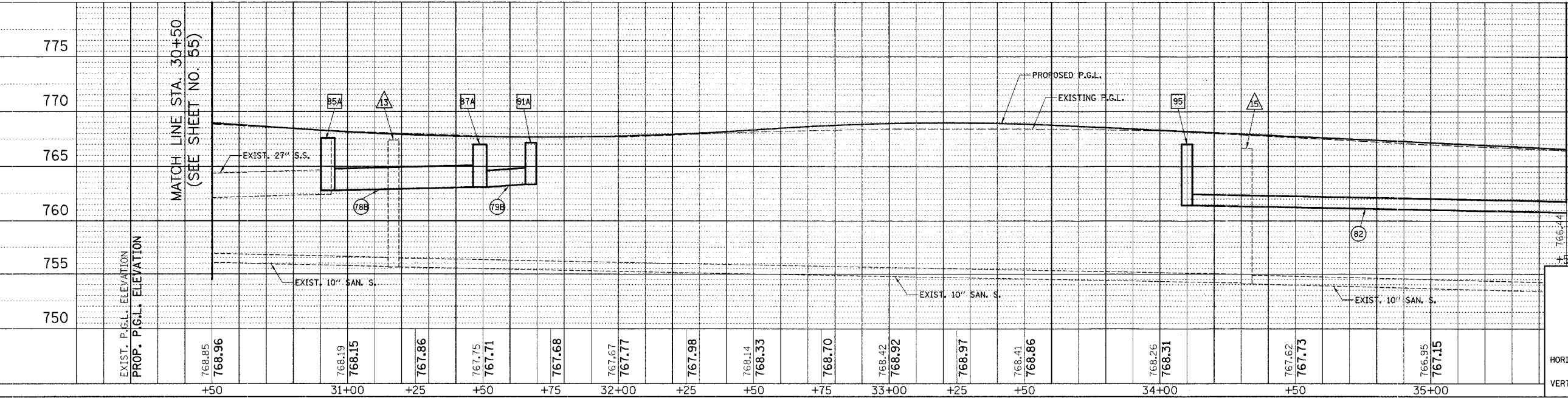
- 88 STA. 31+60.51, 28.86' LT. INLET TO BE ADJUSTED W/NEW SPECIAL F & G EX RIM = 766.70 PR RIM = 766.88 INV = 763.80 (EX 15" W) INV = 763.80 (4" SE)
- 88A STA. 31+51, 37.04' LT. INLET, T-A SPECIAL F & G RIM = 766.78 INV = 763.13 (12" S)
- 89 STA. 31+37.06, 38.56' RT. INLET T-A SPECIAL F & G RIM = 767.10 INV = 763.51 (12" E)
- 90 STA. 31+28.70, 50.90' RT. CB TO BE REMOVED
- 90A STA. 31+28.5, 62' RT. INL T-A T-8 GRATE RIM = 767.00 INV = 763.69 (12" NW) INV = 764.80 (EX 12" S)
- 91 STA. 31+67.64, 40.20' RT. MH TO BE REMOVED
- 91A STA. 31+67.64, 39.62' RT. CB T-A, 4'-DIA. SPECIAL F & G RIM = 767.15 INV = 763.40 (EX 15" SE) INV = 763.36 (15" NW) INV = 763.36 (12" W & E) INV = 764.15 (4" N)
- 92 STA. 31+75.82, 53.98' RT. INLET TO BE ADJUSTED W/NEW T-8 GRATE EXIST. RIM = 767.60 PROP. RIM = 767.60
- 93 STA. 32+00, 38.00' RT. INLET T-A T-8 GRATE RIM = 767.58 INV = 763.51 (12" W)
- 94 STA. 34+10, 38.00' LT. INLET T-B T-8 GRATE RIM = 766.80 INV = 763.51 (12" N) INV = 764.36 (12" S)
- 95 STA. 34+10, 44.64' LT. CB T-A, 4' DIA. T-1 FR., C.L. RIM = 766.80 INV = 761.49 (12" E) INV = 763.49 (12" SW)
- 96 STA. 34+10, 27.50' LT. INLET T-A SPECIAL F & G RIM = 767.31 INV = 764.39 (12" NE)

- 31 STA. 30+85, 31.5' LT. FIRE HYDRANT PRESSURE CONNECTION
- 32 5' - DUCTILE IRON WATERMAIN 6" T.B.F. = 0 CU. YD.
- 33 STA. 31+00.54, 27.70' LT. F.H. TO BE REMOVED
- 34 STA. 31+56, 58.5' LT. V.V. TO BE ADJUSTED EX RIM = 767.11 PR RIM = 767.11
- 35 STA. 31+69.86, 27.07' LT. V.V. TO BE ADJUSTED EX RIM = 767.23 PR RIM = 767.31
- 36 STA. 31+73, 80.0' RT. FIRE HYDRANT PRESSURE CONNECTION
- 37 3' - DUCTILE IRON WATERMAIN 6" T.B.F. = 0 CU. YD.
- 38 STA. 32+29.85, 26.72' LT. V.V. TO BE RECONSTRUCTED EX RIM = 767.77 PR RIM = 767.25
- 39 STA. 33+15, 35' LT. FIRE HYDRANT PRESSURE CONNECTION
- 40 7'-DUCTILE IRON WATERMAIN 6" T.B.F. = 3.0 CU. YD.
- 41 STA. 33+72, 43' LT. DOMESTIC WATER SERVICE BOX TO BE ADJUSTED
- 42 STA. 34+67, 51.5' LT. V.V. TO BE ADJUSTED
- 43 STA. 34+86.05, 34.02' LT. F.H. TO BE REMOVED
- 44 STA. 35+34, 42.6' LT. DOMESTIC WATER SERVICE BOX TO BE ADJUSTED
- 43A STA. 31+16.69, 39.05' LT. SAN. MH TO BE RECONSTRUCTED EXIST. RIM = 767.38 PROP. RIM = 767.35
- 44A STA. 31+32.57, 54.67' RT. SAN. MH TO BE ADJUSTED EXIST. RIM = 767.82 PROP. RIM = 767.31
- 45A STA. 34+31.87, 38.74' LT. SAN. MH TO BE ADJUSTED EXIST. RIM = 766.66 PROP. RIM = 767.12
- 46 10' - 10" SANITARY SEWER REMOVAL 10' - 10" SANITARY SEWER T.B.F. = 17.3 CU. YD.



MATCH LINE STA. 30+50  
(SEE SHEET NO. 55)

MATCH LINE STA. 35+50  
(SEE SHEET NO. 57)



ILLINOIS DEPARTMENT OF TRANSPORTATION  
DRAINAGE AND UTILITIES  
STA. 30+50 TO STA. 35+50  
WISE ROAD

HORIZ. 20  
VERT. 5

SCALE IN FEET

DATE: 9/28/07  
DESIGNED BY: KRK  
CHECKED BY: JRJ