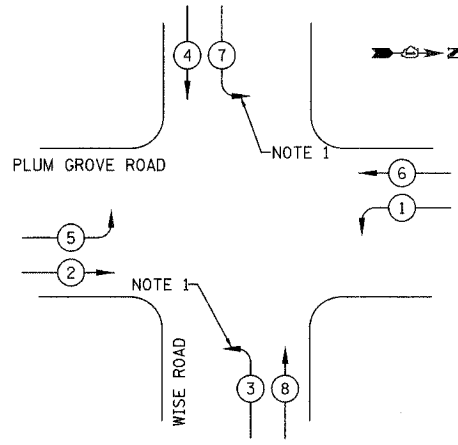




TEMPORARY CABLE DIAGRAM LEGEND

- R TEMPORARY TRAFFIC SIGNAL SECTION OR PEDESTRIAN SIGNAL SECTION 12" (300 mm)
- X TEMPORARY CONTROLLER CABINET
- S TEMPORARY SERVICE INSTALLATION
- ⑤ INDICATES NUMBER OF CONDUCTORS IN CABLE. ALL CONDUCTORS TO BE NUMBER 14 AWG WIRE UNLESS OTHERWISE NOTED.
- EMERGENCY VEHICLE LIGHT DETECTOR
- CONFIRMATION BEACON
- PEDESTRIAN PUSHBUTTON DETECTOR
- VEHICLE DETECTOR, INDUCTION LOOP
- P 12" (300mm) PEDESTRIAN SIGNAL SECTION
- VIDEO VEHICLE DETECTOR

TEMPORARY CONTROLLER SEQUENCE

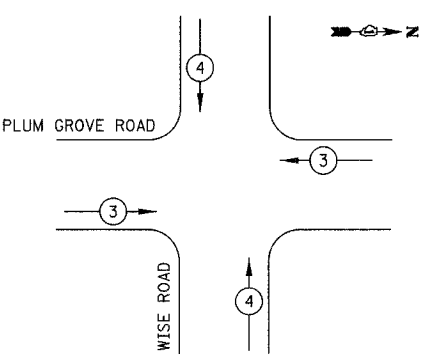


LEGEND

- DUAL ENTRY PHASE
- SINGLE ENTRY PHASE
- OVERLAP
- PEDESTRIAN PHASE
- NUMBER REFERS TO ASSOCIATED PHASE

PHASE DESIGNATION DIAGRAM

TEMPORARY EMERGENCY VEHICLE PREEMPTION SEQUENCE



PROPOSED EMERGENCY VEHICLE PREEMPTORS

EMERGENCY VEHICLE PREEMPTOR	3	4
MOVEMENT		

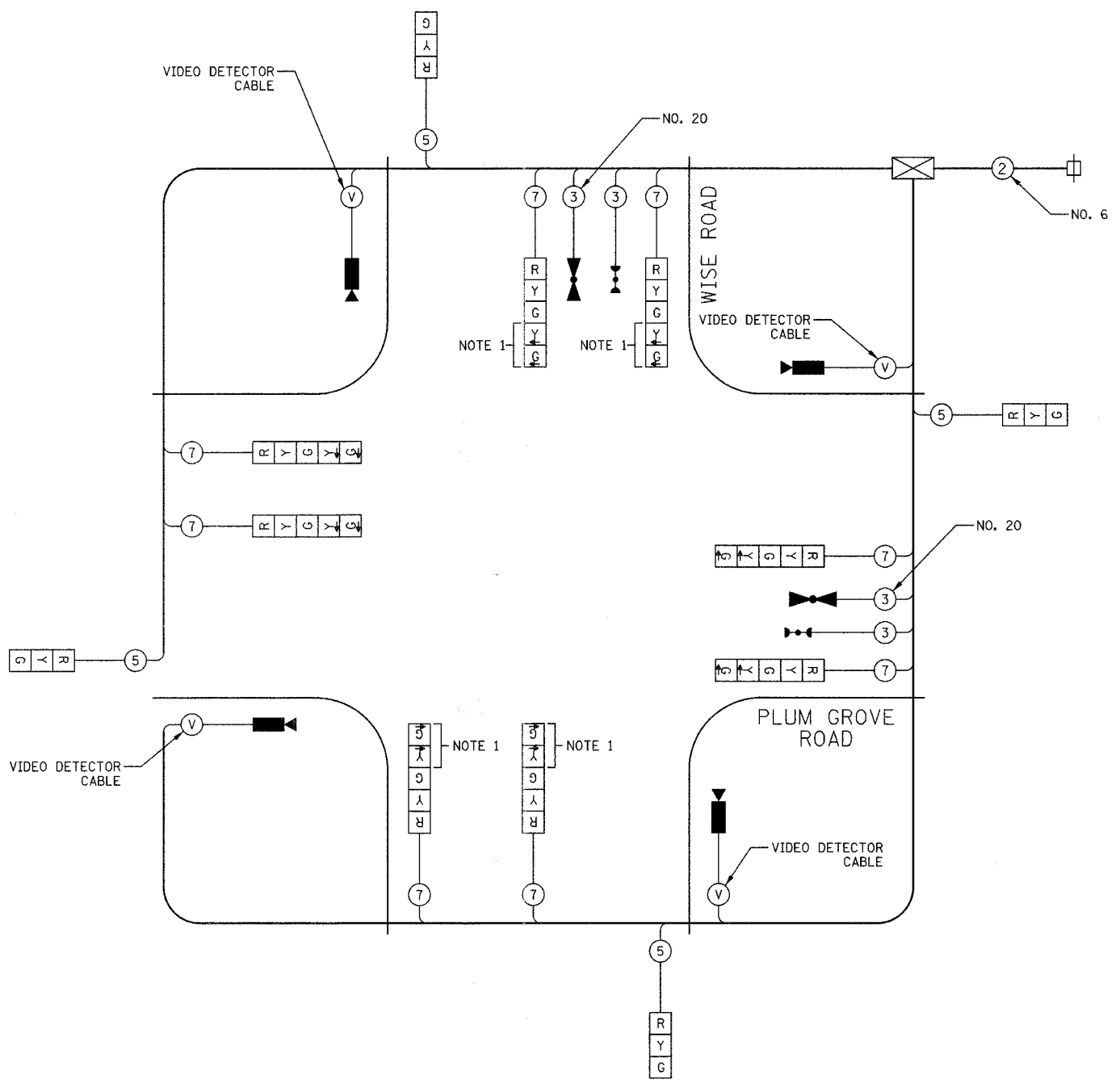
ESTIMATED BILL OF MATERIALS

PAY ITEM	UNIT	QUANTITY
TEMPORARY WOOD POLE (CLASS 5 OR BETTER) 45 FOOT MINIMUM	EACH	4
FULL-ACTUATED CONTROLLER AND TEMPORARY CABINET	EACH	1
SPAN WIRE	FOOT	491
TETHER WIRE	FOOT	466
ELECTRIC CABLE AERIAL SUSPENDED, SIGNAL, NO. 14 3C	FOOT	288
ELECTRIC CABLE AERIAL SUSPENDED, SIGNAL, NO. 14 5C	FOOT	796
ELECTRIC CABLE AERIAL SUSPENDED, SIGNAL, NO. 14 7C	FOOT	1592
ELECTRIC CABLE AERIAL SUSPENDED, VIDEO DETECTOR CABLE	FOOT	646
ELECTRIC CABLE AERIAL SUSPENDED, SERVICE, NO. 6 2C	FOOT	56
ELECTRIC CABLE AERIAL SUSPENDED NO. 20 3/C, TWISTED, SHIELDED	FOOT	288
SIGNAL HEAD, 1-FACE, 3-SECTION, SPAN WIRE MOUNTED	EACH	4
SIGNAL HEAD, 1-FACE, 5-SECTION, SPAN WIRE MOUNTED	EACH	8
LIGHT DETECTOR	EACH	2
LIGHT DETECTOR AMPLIFIER	EACH	1
VIDEO DETECTION SYSTEM (COMPLETE INTERSECTION)	EACH	1
SERVICE INSTALLATION - POLE MOUNTED	EACH	1

I.D.O.T. TRAFFIC SIGNAL INSTALLATION ELECTRICAL SERVICE REQUIREMENTS					TOTAL WATTAGE
TYPE	NO. LAMPS	WATTAGE INCAND.	LED	OPERATION	
SIGNAL (RED)	12		17	0.50	102
(YELLOW)	12		25	0.25	75
(GREEN)	12		15	0.25	45
ARROW	8		12	0.10	10
CONTROLLER	1		100	1.00	100
FLASHER					0.50
TOTAL =					332

ENERGY COSTS TO: COOK COUNTY HIGHWAY DEPARTMENT
69 WEST WASHINGTON STREET
CHICAGO, IL 60602

ENERGY SUPPLY: CONTACT: MICHAEL BELL
PHONE: (630) 691-4529
COMPANY: COM ED



TEMPORARY CABLE PLAN
NOT TO SCALE

NOTE 1: THE EASTBOUND AND WESTBOUND LEFT TURNS SHALL NOT BE OPERATIONAL UNTIL PROPOSED PAVEMENT IS FINISHED. TRAFFIC SIGNAL SECTIONS SHALL BE BAGGED AND THE PHASES DISABLED.

ILLINOIS DEPARTMENT OF TRANSPORTATION

TEMPORARY CABLE PLAN

WISE ROAD AND PLUM GROVE ROAD

DATE: 9/28/07
DESIGNED BY: JJE
CHECKED BY: JRV

SCALE: NOT TO SCALE