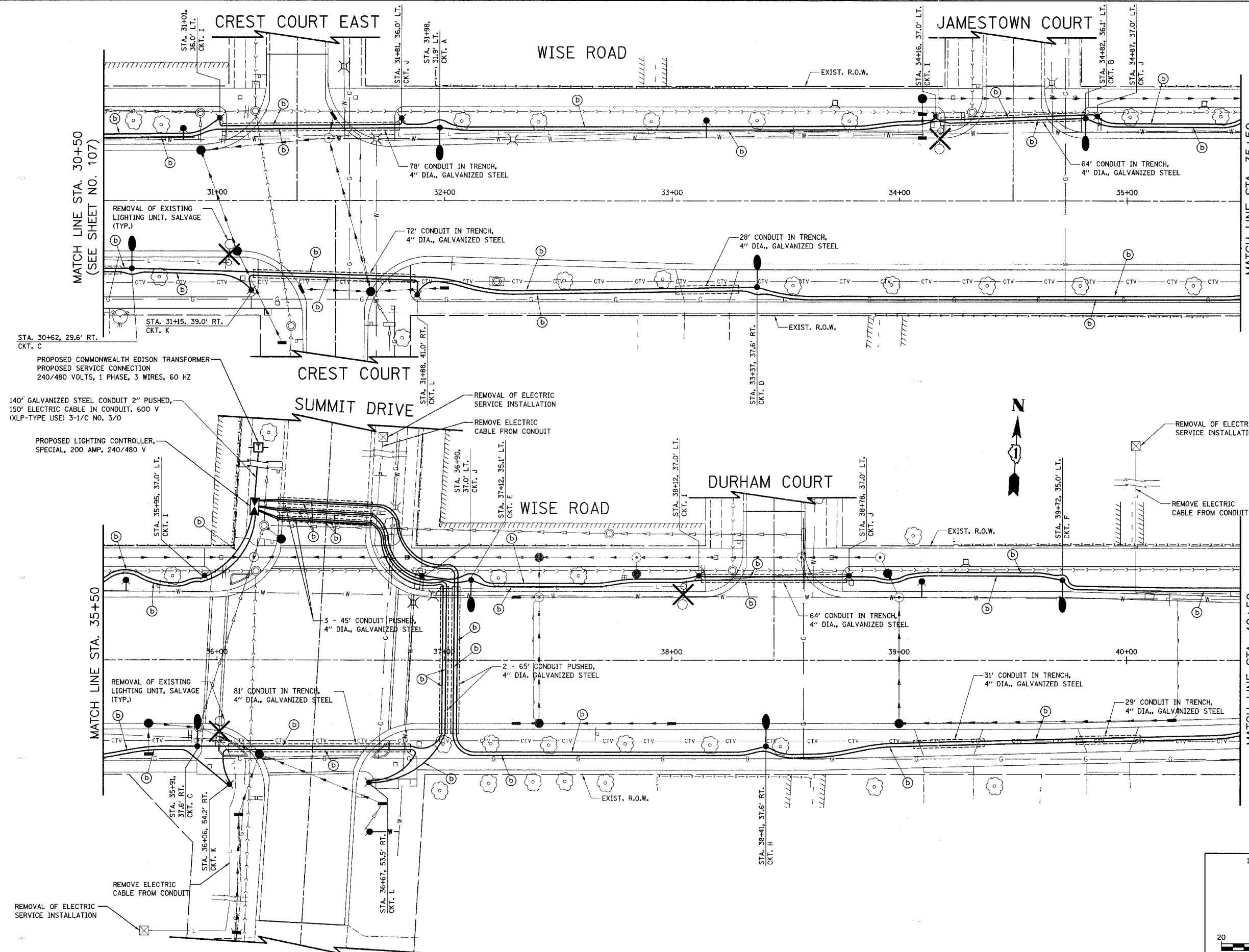


F.A.U. RTE.	SECTION	COUNTY	TOTAL SHEETS	SHEET NO.
1338	05-00083-00-FF	COOK	167	108
LIGHTING PLAN - STA. 30+50 TO STA. 40+50				
FED. ROAD DIST. NO. 7 ILLINOIS FED. AID PROJECT M-80035121				

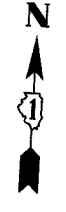


MATCH LINE STA. 30+50  
(SEE SHEET NO. 107)

MATCH LINE STA. 35+50

MATCH LINE STA. 35+50

MATCH LINE STA. 40+50  
(SEE SHEET NO. 109)



PROPOSED COMMONWEALTH EDISON TRANSFORMER  
PROPOSED SERVICE CONNECTION  
240/480 VOLTS, 1 PHASE, 3 WIRES, 60 HZ

140' GALVANIZED STEEL CONDUIT 2" PUSHED,  
150' ELECTRIC CABLE IN CONDUIT, 600 V  
(XLP-TYPE USE) 3-1/C NO. 3/0

PROPOSED LIGHTING CONTROLLER,  
SPECIAL, 200 AMP, 240/480 V

ILLINOIS DEPARTMENT OF TRANSPORTATION  
LIGHTING PLAN  
STA. 30+50 TO STA. 40+50  
WISE ROAD

DATE: 9/28/07  
DESIGNED BY: SJC  
CHECKED BY: DNM

20 0 20  
SCALE IN FEET