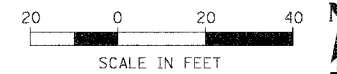
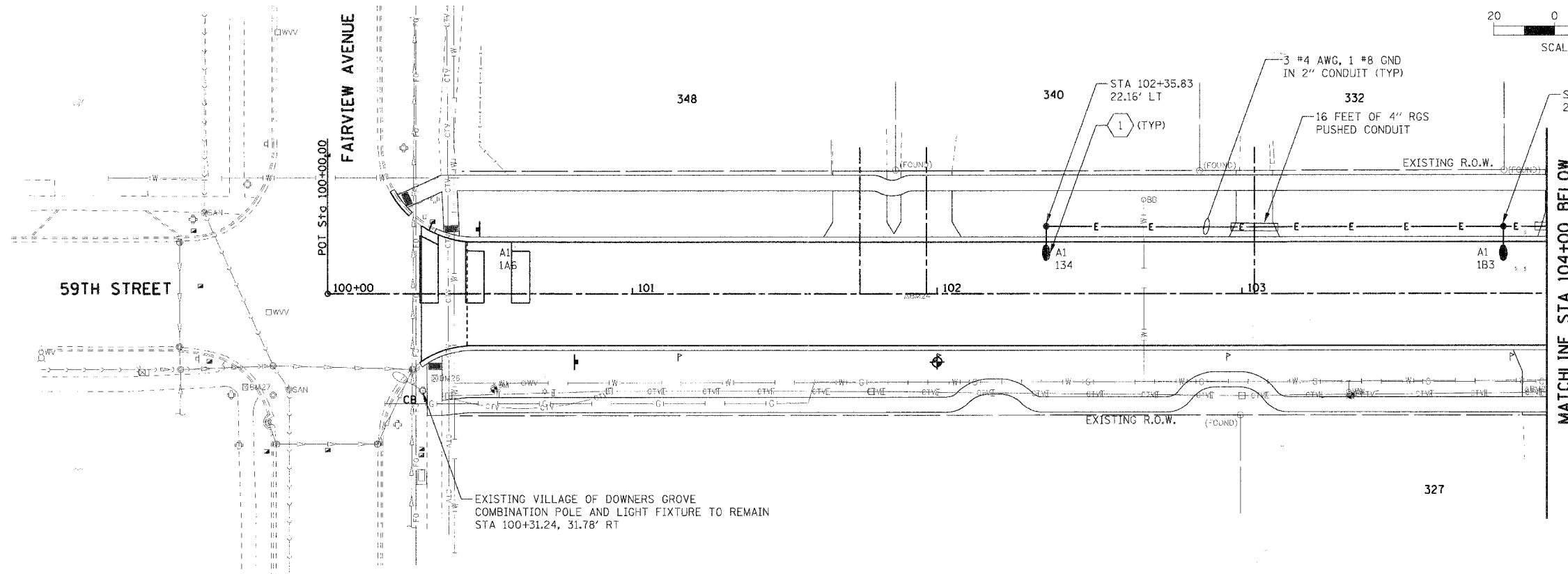


F.A.U. RTE.	SECTION	COUNTY	TOTAL SHEET SHEETS NO.
1512	05-00093-00-WR	DUPAGE	72 46
STA. 100+00		TO STA. 109+00	
FED. ROAD DIST. NO. 1 ILLINOIS FED. AID PROJECT			
PROJECT NO.: M-8003 (699)			



PLAN	DESIGNED	DATE
	PLOTTED	
	ALIGNED	
	CHECKED	
	NO. _____	
	NOTE BOOK	
	FILE NAME	
	USER NAME	

PROFILE	DESIGNED	DATE
	PLOTTED	
	GRADES	
	CHECKED	
	NO. _____	
	NOTE BOOK	
	FILE NAME	
	USER NAME	

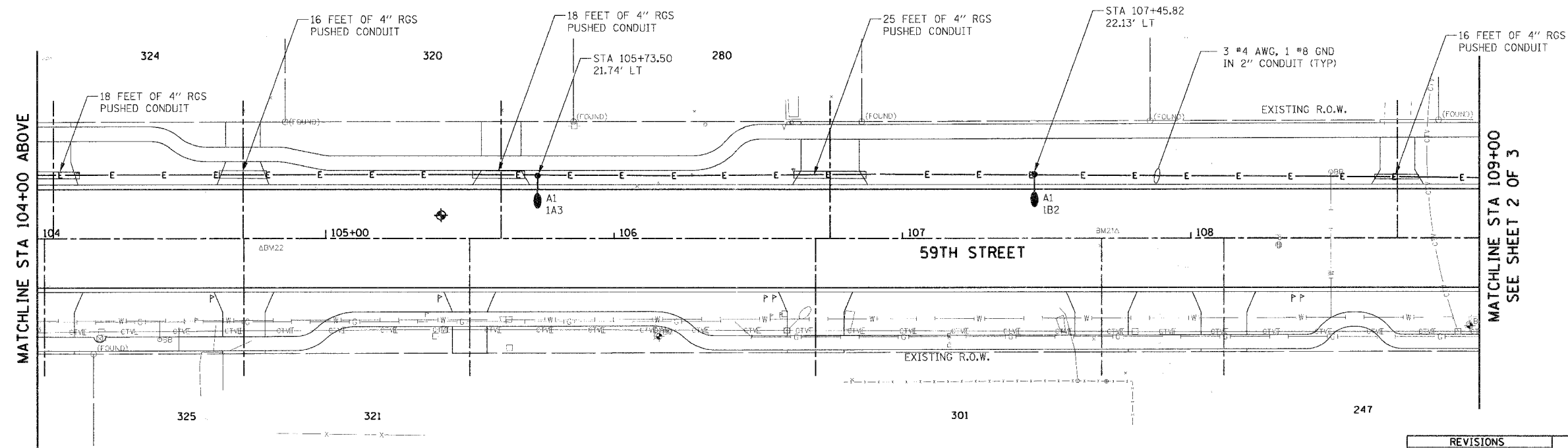


GENERAL NOTES

- REFER TO DRAWING E-01 FOR GENERAL NOTES, LEGEND AND ABBREVIATIONS.
- LOCATION OF EXISTING LIGHT POLES ARE APPROXIMATE. FIELD VERIFY EXACT LOCATION.
- COORDINATE EXACT LOCATION OF NEW LIGHT POLES WITH CIVIL WORK AND VILLAGE OF WESTMONT.

KEY NOTES

- 1 PROVIDE NEW LIGHT POLE AND LIGHT FIXTURE IN ACCORDANCE WITH DETAILS ON SHEET E-08.
- 2 PROVIDE NEW LIGHT CIRCUIT AND ASSOCIATED CONDUIT AND WIRES PER VILLAGE OF WESTMONT STANDARDS.



REVISIONS		ILLINOIS DEPARTMENT OF TRANSPORTATION
NAME	DATE	
		VILLAGE OF WESTMONT 59TH STREET RECONSTRUCTION PROPOSED LIGHTING PLAN SHEET 1 OF 3
SCALE: 1"=20'		DRAWN BY: FO
DATE: 09/21/07		CHECKED BY: DEM

PLT DATE # DATES
 FILE NAME # REVISES
 USER NAME # USER#