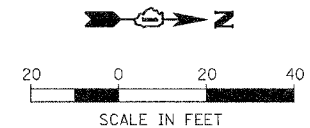


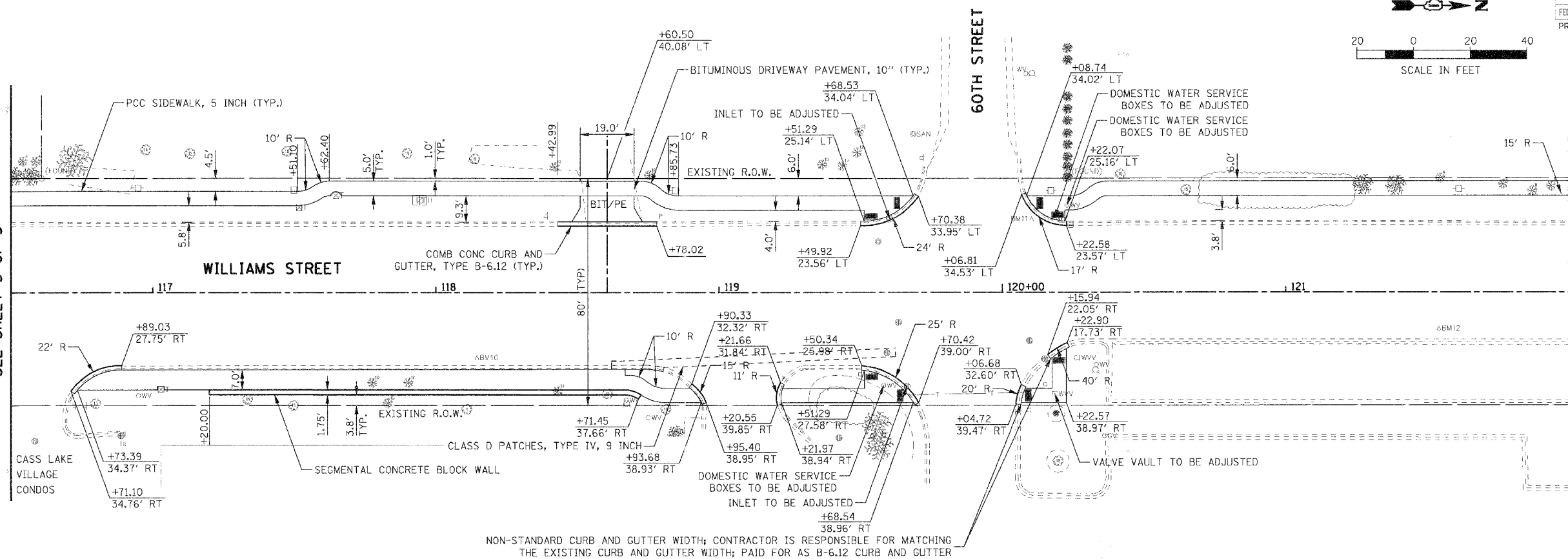
F.A.U. RTE.	SECTION	COUNTY	TOTAL SHEETS	SHEET NO.
2993	05-00094-00-WR	DUPAGE	67	24
STA. 116+50		TO STA. 122+00		
FED. ROAD DIST. NO. 1 ILLINOIS FED. AID PROJECT				
PROJECT NO.: M-8003 (707)				



PLAN	SURVEYED	DATE
	BY	
	PLOTTED	
	NOTED	
	NO. OF MAY CHECKED	
	DATE	
	NO.	
	FILE NAME	

MATCHLINE STA 116+50
SEE SHEET 3 OF 5

MATCHLINE STA 122+00
SEE SHEET 5 OF 5

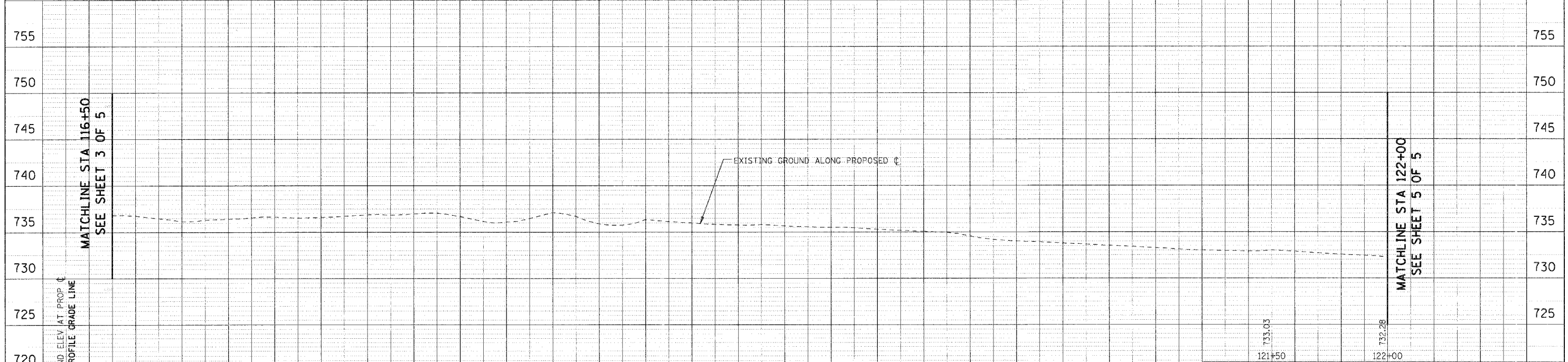


NON-STANDARD CURB AND GUTTER WIDTH; CONTRACTOR IS RESPONSIBLE FOR MATCHING THE EXISTING CURB AND GUTTER WIDTH; PAID FOR AS B-6.12 CURB AND GUTTER

PROFILE	SURVEYED	DATE
	BY	
	PLOTTED	
	NOTED	
	NO. OF MAY CHECKED	
	DATE	
	NO.	
	FILE NAME	

MATCHLINE STA 116+50
SEE SHEET 3 OF 5

MATCHLINE STA 122+00
SEE SHEET 5 OF 5



PLOT DATE = #DATE#
FILE NAME = #FILE#
PLOT SCALE = #SCALE#
USER NAME = #USER#

REVISIONS	
NAME	DATE

ILLINOIS DEPARTMENT OF TRANSPORTATION
VILLAGE OF WESTMONT
WILLIAMS STREET RECONSTRUCTION
PLAN AND PROFILE
SHEET 4 OF 5
SCALE: HORIZ. 1/20
VERT. 1/5
DATE: 09/21/07
DRAWN BY: JAL
CHECKED BY: JMT