

PLAN	SURVEYED	DATE
	PLOTTED	
	REVISIONS	
	BY	
	NO.	
	DATE	

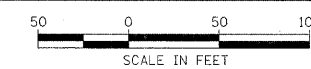
PROFILE	SURVEYED	DATE
	PLOTTED	
	REVISIONS	
	BY	
	NO.	
	DATE	

24825 AM
3/28/2007
\\bos\smith\2007\0742_douglas\cadd\plan.dwg\142.plt,3.dgn

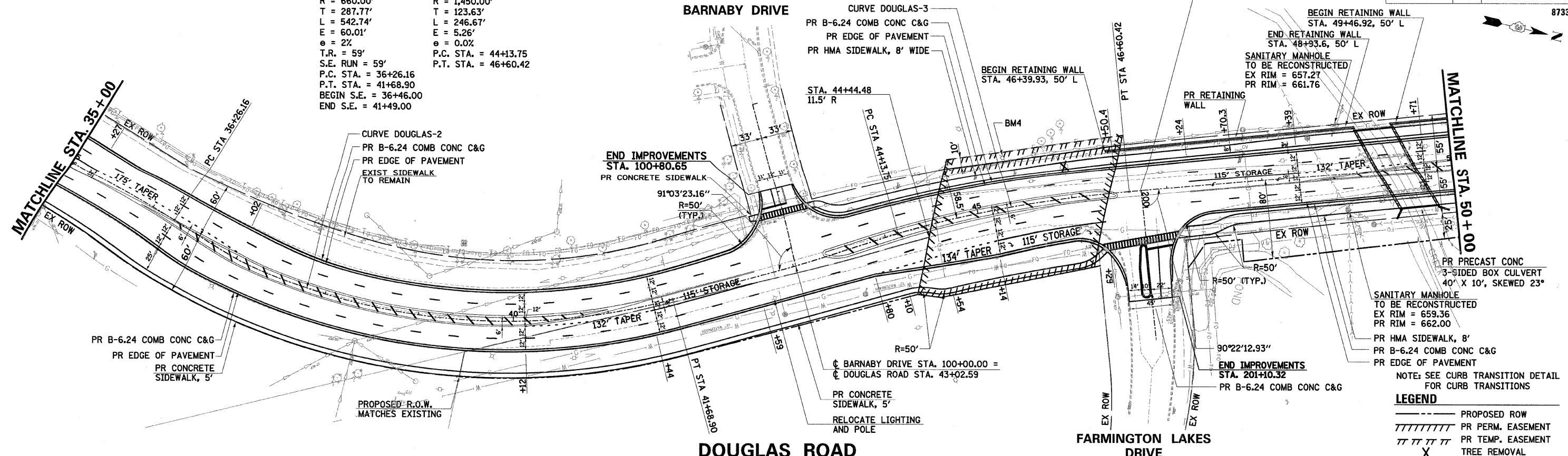
CURVE DOUGLAS-2
PI STA. = 39+13.93
Δ = 47° 06' 59" (LT)
D = 8° 40' 52"
R = 660.00'
T = 287.77'
L = 542.74'
E = 60.01'
e = 2%
T.R. = 59'
S.E. RUN = 59'
P.C. STA. = 36+26.16
P.T. STA. = 41+68.90
BEGIN S.E. = 36+46.00
END S.E. = 41+49.00

CURVE DOUGLAS-3
PI STA. = 45+37.38
Δ = 9° 44' 49" (RT)
D = 3° 57' 05"
R = 1,450.00'
T = 123.63'
L = 246.67'
E = 5.26'
e = 0.0%
P.C. STA. = 44+13.75
P.T. STA. = 46+60.42

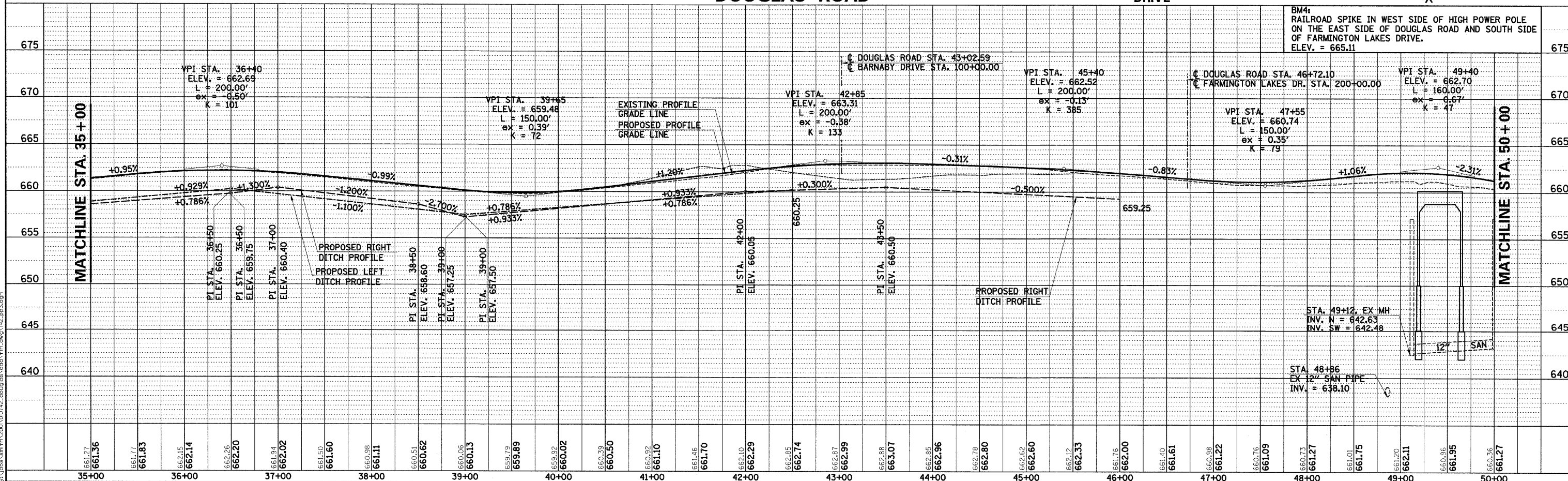
☐ FARMINGTON LAKES DRIVE STA. 200+00.00 =
☐ DOUGLAS ROAD STA. 46+72.10



F.A.U. RTE.	SECTION	COUNTY	TOTAL SHEETS	SHEET NO.
2508	02-00039-00-PV	KENDALL	146	26
STA.	TO STA.			
FED. ROAD DIST. NO.	ILLINOIS	FED. AID PROJECT	87333	



- LEGEND**
- PROPOSED ROW
 - ////// PR PERM. EASEMENT
 - ||||| PR TEMP. EASEMENT
 - X TREE REMOVAL



DOUGLAS ROAD STA. 35+00 TO STA. 50+00 - PLAN AND PROFILE