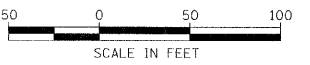


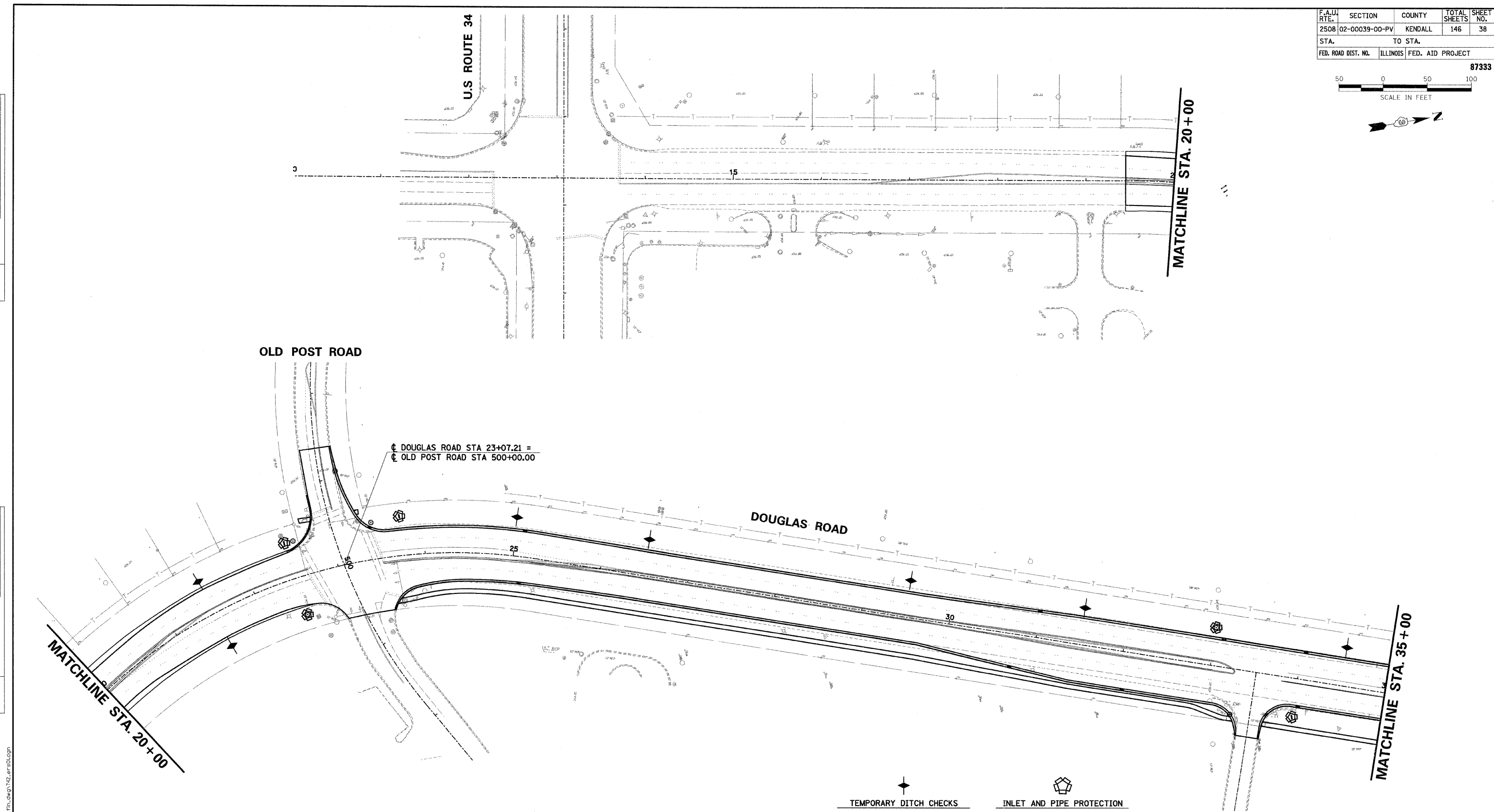
F.A.U. RTE.	SECTION	COUNTY	TOTAL SHEETS	SHEET NO.
2508	02-00039-00-PV	KENDALL	146	38
STA.		TO STA.		
FED. ROAD DIST. NO.	ILLINOIS	FED. AID PROJECT		

87333



PLAN	SURVEYED	DATE
NOTE BOOK NO.	BY	

PROFILE	SURVEYED	DATE
NOTE BOOK NO.	BY	



OLD POST ROAD

U.S. ROUTE 34

MATCHLINE STA. 20+00

MATCHLINE STA. 35+00

⊕ DOUGLAS ROAD STA 23+07.21 =
 ⊕ OLD POST ROAD STA 500+00.00

DOUGLAS ROAD

- ◆ TEMPORARY DITCH CHECKS
- STA. 21+50, 40.5' LT
 - STA. 21+50, 40.5' RT
 - STA. 25+00, 44.5' LT
 - STA. 26+50, 42' LT
 - STA. 29+50, 42' LT
 - STA. 31+50, 42' LT
 - STA. 34+50, 44' LT

- ⬠ INLET AND PIPE PROTECTION
- STA. 22+50, 42' LT
 - STA. 22+50, 43' RT
 - STA. 23+75, 45' LT
 - STA. 33+00, 43' LT
 - STA. 34+00, 44' RT

ILLINOIS DEPARTMENT OF TRANSPORTATION
 F.A.U. 2508 - DOUGLAS ROAD
 (U.S. RTE 34 TO U.S. RTE 30)
 EROSION CONTROL PLAN

SCALE: VERT. _____
 HORIZ. _____
 DATE _____ DRAWN BY BAH
 CHECKED BY CRF

24835 AM
 3/29/2007
 y:\jobs\smh\11\2006\00742.douglas\ood\fn_dwg\742_err601.dgn