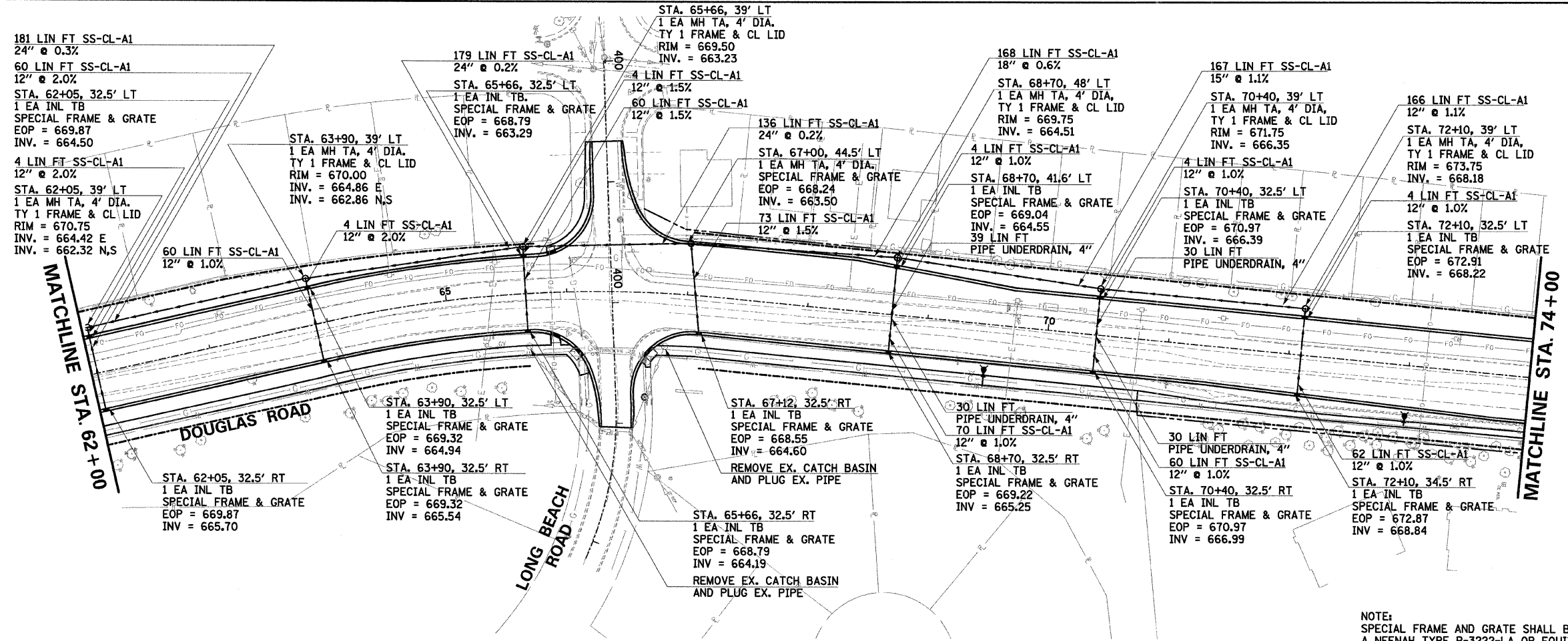
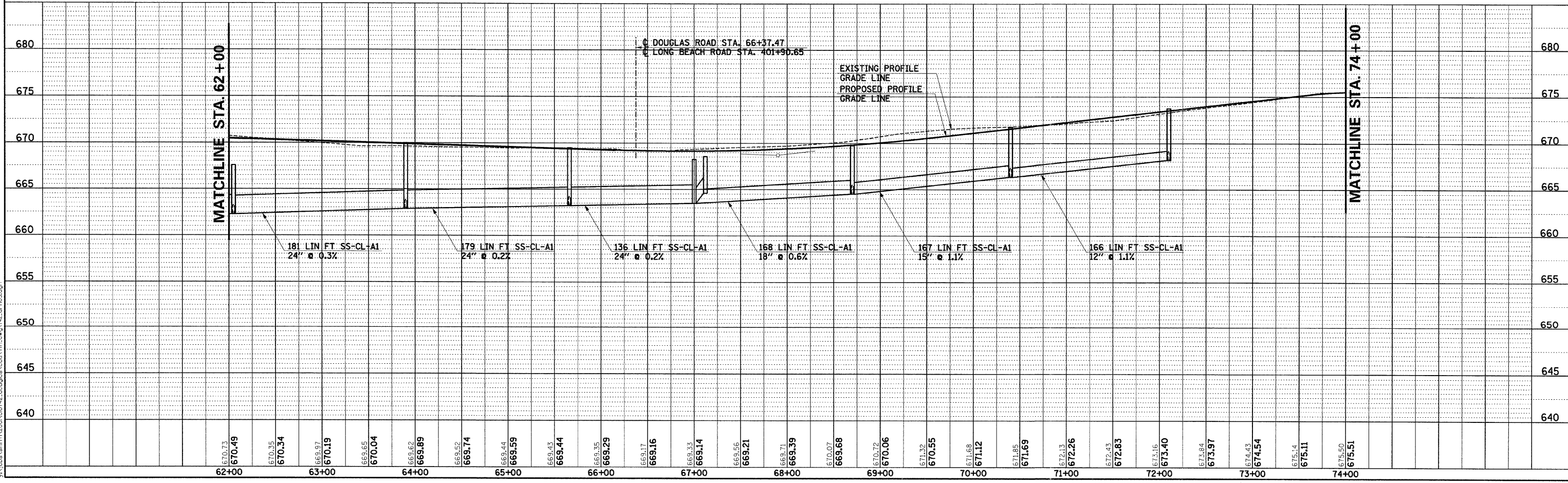


F.A.U. RTE.	SECTION	COUNTY	TOTAL SHEETS	SHEET NO.
2508	02-00039-00-PV	KENDALL	146	45
STA.		TO STA.		
FED. ROAD DIST. NO.		ILLINOIS	FED. AID PROJECT	87333



NOTE:
SPECIAL FRAME AND GRATE SHALL BE
A NEENAH TYPE R-3222-LA OR EQUIVALENT.



DOUGLAS ROAD STA.62+00 TO STA. 74+00 - DRAINAGE PLAN AND PROFILE

PLAN	SURVEYED	DATE
NO.	BY	

PROFILE	SURVEYED	DATE
NO.	BY	

24240 AM
3/28/2007
\\fs1\sa\m\m\2006\00742_dc\p\p\cd\4\m\cwg\142.dwg