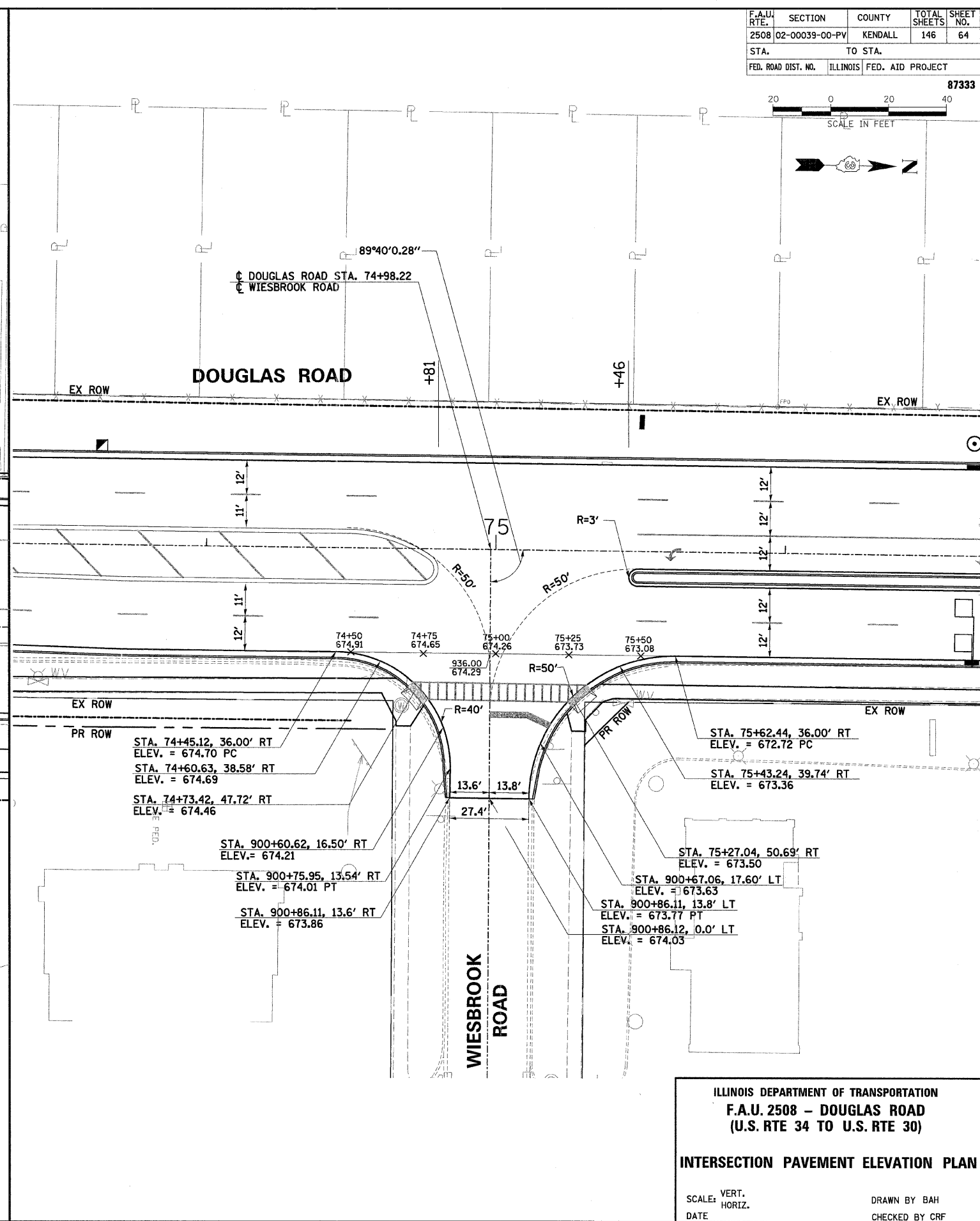
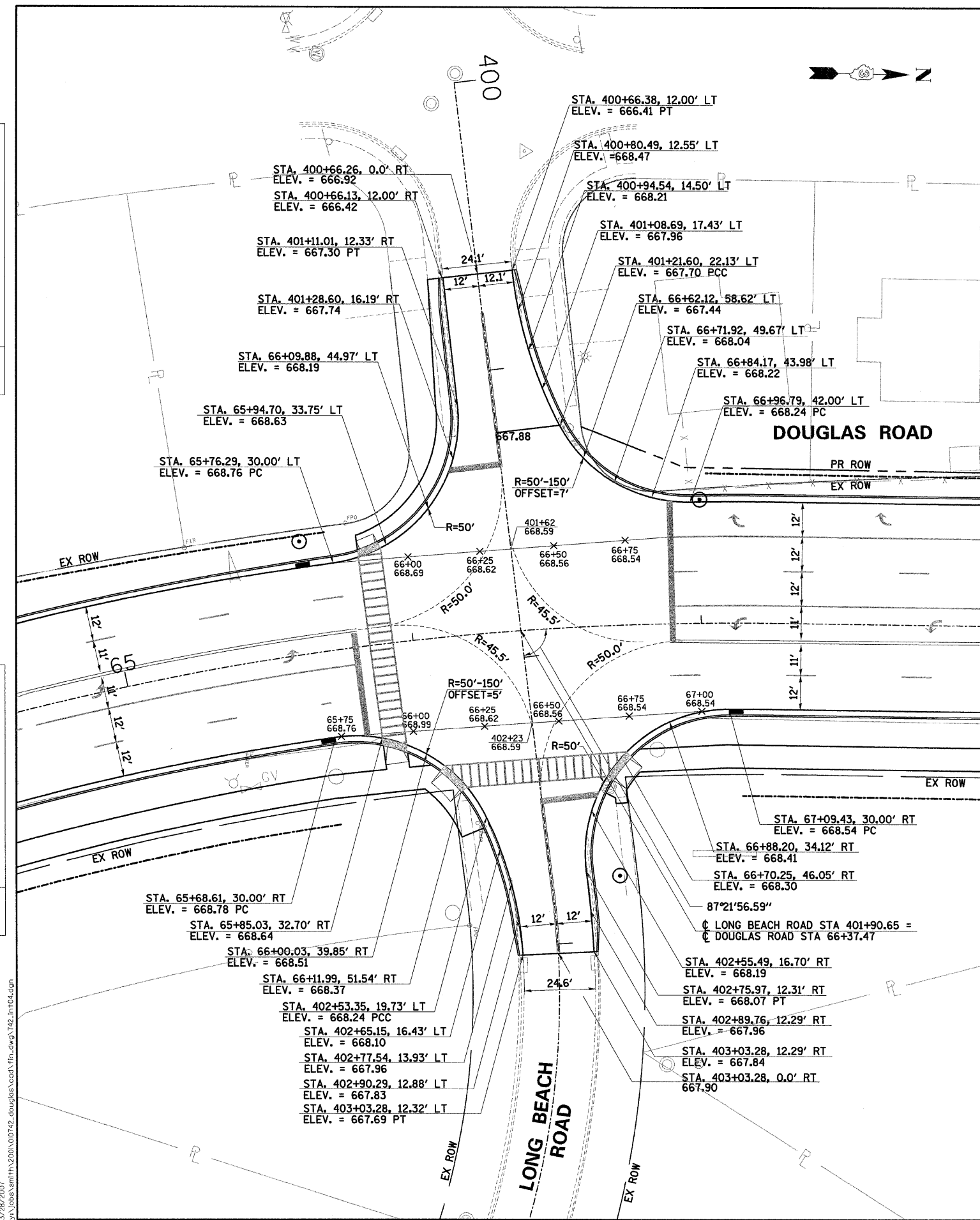


F.A.U. RTE.	SECTION	COUNTY	TOTAL SHEETS	SHEET NO.
2508	02-00039-00-PV	KENDALL	146	64
STA.		TO STA.		
FED. ROAD DIST. NO.	ILLINOIS FED. AID PROJECT		87333	



PLAN	SURVEYED	DATE
NOTE BOOK NO.	PLOTTED	
	CHECKED	
	BY	
	DATE	

PROFILE	SURVEYED	DATE
NOTE BOOK NO.	PLOTTED	
	CHECKED	
	BY	
	DATE	



ILLINOIS DEPARTMENT OF TRANSPORTATION
F.A.U. 2508 - DOUGLAS ROAD
 (U.S. RTE 34 TO U.S. RTE 30)

INTERSECTION PAVEMENT ELEVATION PLAN

SCALE: VERT. _____
 HORIZ. _____

DATE _____ DRAWN BY BAH
 CHECKED BY CRF

25249 AM
 3/28/2007
 J:\Sbs\sm\h\2000\010742_douglas\cod\1\h.dwg 742.mxd