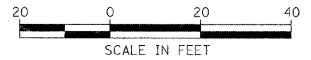


F.A.U. RTE.	SECTION	COUNTY	TOTAL SHEETS	SHEET NO.
2508	02-00039-00-PV	KENDALL	146	75
STA.	TO STA.			
FED. ROAD DIST. NO.	ILLINOIS	FED. AID PROJECT	87333	



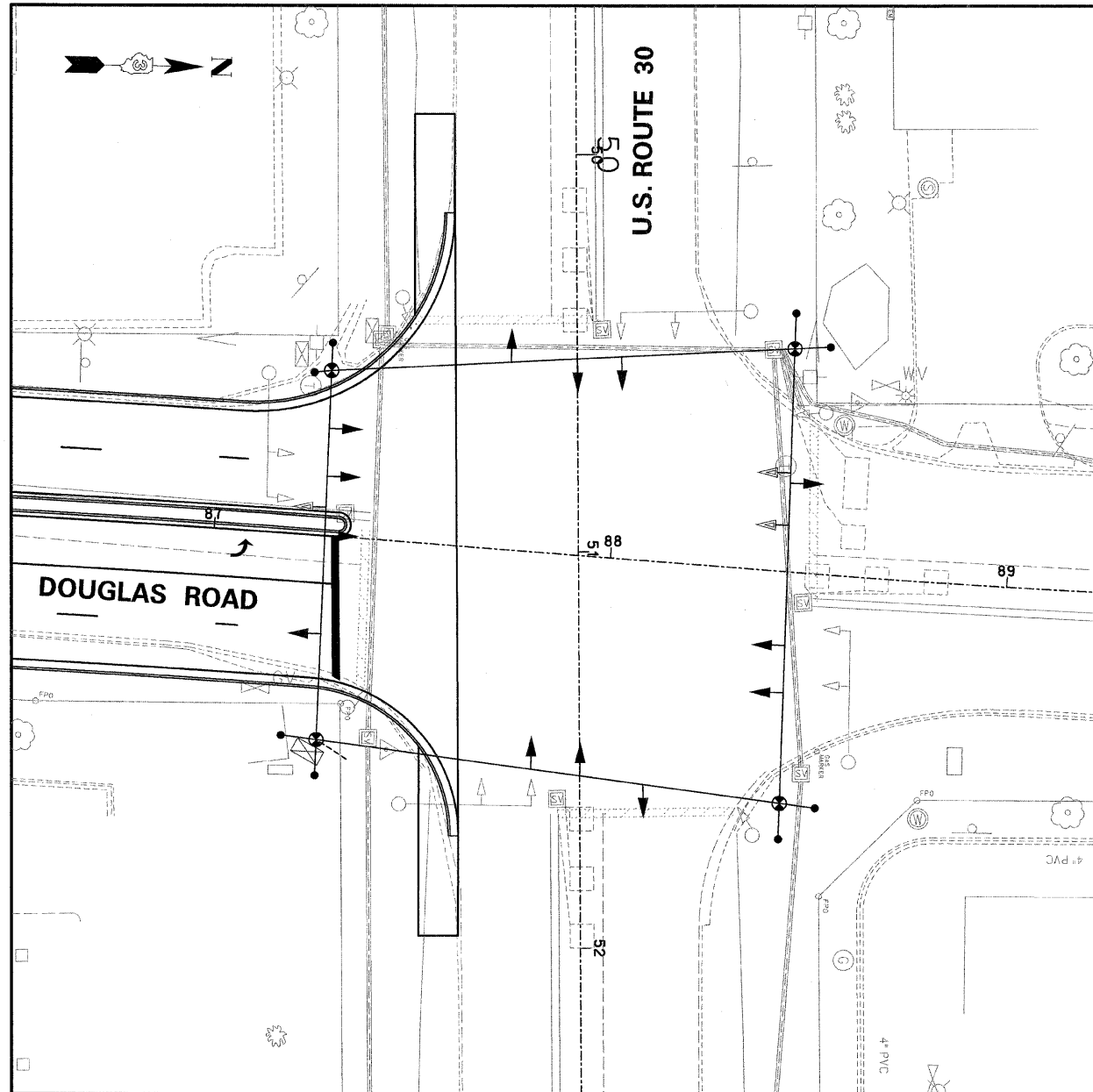
NOTE
ALL EXISTING EQUIPMENT TO REMAIN

TEMPORARY TRAFFIC SIGNAL LEGEND

- ▲ TEMPORARY TRAFFIC SIGNAL HEAD
SPAN WIRE MOUNTED, ORIGINAL LOCATION
- ▲ TEMPORARY TRAFFIC SIGNAL HEAD
SPAN WIRE MOUNTED, SECONDARY LOCATION*
- ⊙ TEMPORARY WOOD POLE (CLASS 5 OR BETTER)
45 FOOT MINIMUM
- ⊠ TEMPORARY CONTROLLER CABINET
- TEMPORARY SPAN WIRE, TETHER WIRE, AND CABLE
- ⊕ TEMPORARY SERVICE INSTALLATION
- ▼ EMERGENCY VEHICLE LIGHT DETECTOR
- ⊕ CONFIRMATION BEACON

REMOVE EXISTING TRAFFIC SIGNAL EQUIPMENT LEGEND

- ▲ EXISTING SIGNAL HEAD TO BE REMOVED
- ⊕ EXISTING SERVICE INSTALLATION TO BE REMOVED
- EXISTING SIGNAL POST AND FOUNDATION TO BE REMOVED
- ⊠ EXISTING CONTROLLER AND FOUNDATION TO BE REMOVED
- ⊠ EXISTING HANDHOLE TO BE REMOVED
- ⊕ EXISTING HEAVY-DUTY HANDHOLE TO BE REMOVED
- ⊕ EXISTING ALUMINUM MAST ARM POLE AND FOUNDATION TO BE REMOVED
- EXISTING STEEL MAST ARM POLE AND FOUNDATION TO BE REMOVED



SIGNAL HEADS MAY NEED TO BE MOVED FROM STAGE TO STAGE AS REQUIRED

ILLINOIS DEPARTMENT OF TRANSPORTATION
F.A.U. 2508 - DOUGLAS ROAD
(U.S. RTE 34 TO U.S. RTE 30)
TEMPORARY TRAFFIC SIGNAL INSTALLATION
INTERSECTION OF DOUGLAS ROAD
AND U.S. ROUTE 30

SCALE: VERT. _____
HORIZ. _____
DATE _____ DRAWN BY _____
CHECKED BY _____

PLAN	SURVEYED	DATE
NOTE BOOK NO.	BY	
	PLOTTED	
	CHECKED	
	BY	
	FILE NAME	

PROFILE	SURVEYED	DATE
NOTE BOOK NO.	BY	
	PLOTTED	
	CHECKED	
	BY	
	FILE NAME	

2:52:24 AM
3/28/2007
y:\jobs\smith\2007\0742\douglas\cadd\plan.dwg 142.1 sig05.dgn