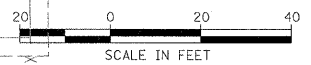
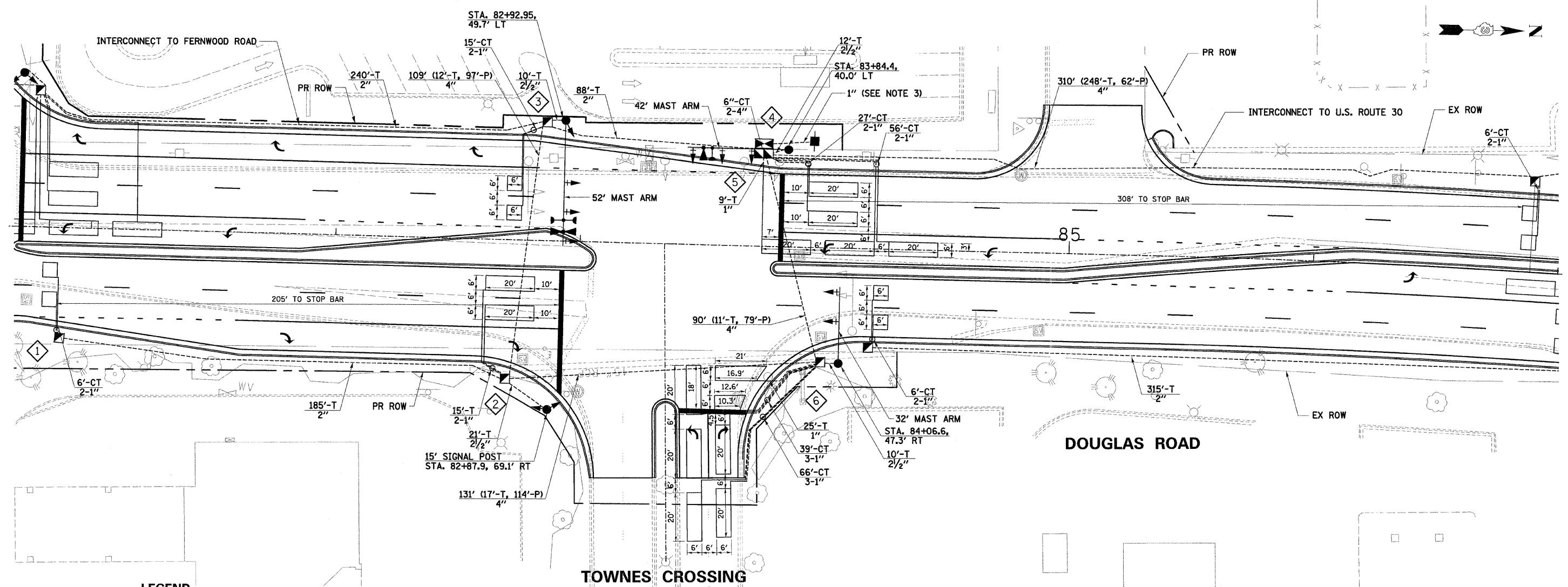


F.A.U. RTE.	SECTION	COUNTY	TOTAL SHEETS	SHEET NO.
2508	02-00039-00-PV	KENDALL	146	85
STA.	TO STA.			
FED. ROAD DIST. NO.	ILLINOIS	FED. AID PROJECT	87333	



PLAN	SURVEYED	DATE
	PLOTTED	
	NOTED	
	BY	
	NO. OF WAY CHECKED	
	NO. OF FILE NAME	

PROFILE	SURVEYED	DATE
	PLOTTED	
	NOTED	
	BY	
	NO. OF WAY CHECKED	
	NO. OF FILE NAME	



LEGEND

	EXISTING	PROPOSED
CONTROLLER CABINET		
SIGNAL POST (LENGTH AS INDICATED)		
SIGNAL FACE		
SIGNAL FACE WITH BACKPLATE		
MAST ARM ASSEMBLY AND POLE (LENGTH AS NOTED)		
COMBINATION MAST ARM ASSEMBLY AND POLE (LENGTH AS NOTED)		
HANDHOLE		
DOUBLE HANDHOLE		
HEAVY DUTY HANDHOLE		
GALVANIZED STEEL CONDUIT		
LOOP DETECTOR		
SERVICE INSTALLATION, TYPE B		
LIGHT DETECTOR		
CONFIRMATION BEACON		
TEMPORARY WOOD POLE (CLASS 5 OR BETTER) 45 FOOT (13.7m) MIN.		
JUNCTION BOX		
PEDESTRIAN SIGNAL HEAD		
PEDESTRIAN PUSHBUTTON		

#	EQUIPMENT ITEM	LOCATION
1	HANDHOLE	STA. 80+87.8, 45.1' RT
2	HANDHOLE	STA. 82+70.5, 56.9' RT
3	HANDHOLE	STA. 82+85.5, 48.8' LT
4	CONTROLLER	STA. 83+74.2, 38.1' LT
5	DOUBLE HANDHOLE	STA. 83+74.3, 42.3' LT
6	HANDHOLE	STA. 83+99.2, 46.9' RT

NOTES

1. THE EMERGENCY VEHICLE PREEMPTION EQUIPMENT FOR THIS PROJECT SHALL BE "3M OPTICOM".
2. THE TRAFFIC SIGNAL CONTROL EQUIPMENT FOR THIS PROJECT SHALL BE "EAGLE" BRAND TO MATCH ADJACENT SIGNALS.
3. SERVICE INSTALLATION LOCATION TO BE DETERMINED IN THE FIELD AT THE TIME OF CONSTRUCTION

ILLINOIS DEPARTMENT OF TRANSPORTATION
F.A.U. 2508 – DOUGLAS ROAD
(U.S. RTE 34 TO U.S. RTE 30)
TOWNES CROSSING ENTRANCE
TRAFFIC SIGNAL INSTALLATION PLAN

SCALE: VERT. _____
 HORIZ. _____
 DATE _____ DRAWN BY _____
 CHECKED BY _____

24E229 AM
 3/28/2007
 Y:\Jobs\2508\11\2006\00742.douglas\cadd\fr_dwg\742_s007.dgn