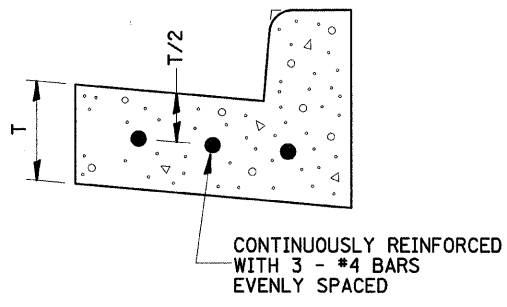
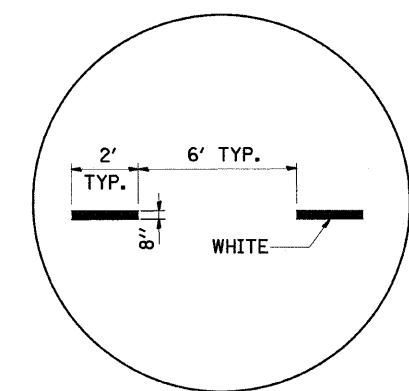
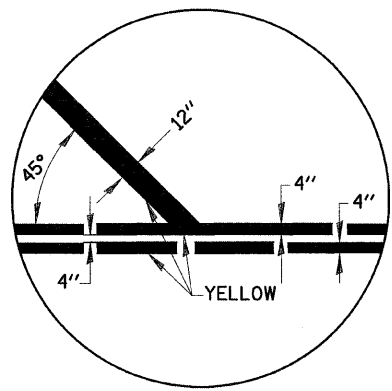


F.A.U. RTE.	SECTION	COUNTY	TOTAL SHEETS	SHEET NO.
2508	02-00039-00-PV	KENDALL	146	118
STA.		TO STA.		
FED. ROAD DIST. NO.		ILLINOIS FED. AID PROJECT		

87333

PLAN	SURVEYED	DATE
NO.	BY	
	NOTED	
	CHECKED	
	DATE	

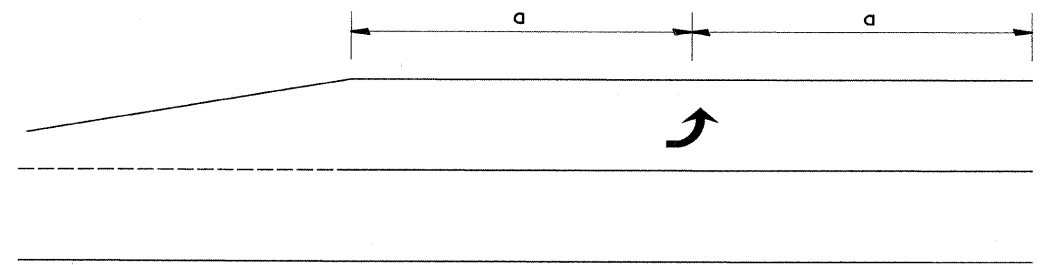
PROFILE	SURVEYED	DATE
NO.	BY	
	NOTED	
	CHECKED	
	DATE	



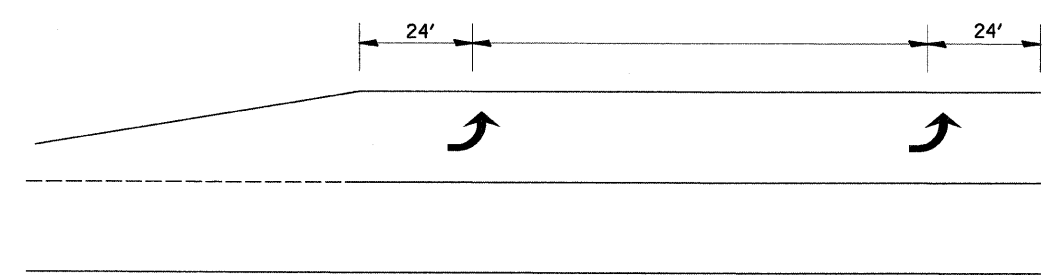
CONTINUOUSLY REINFORCED WITH 3 - #4 BARS EVENLY SPACED

REINFORCEMENT SHALL NOT BE PAID FOR SEPARATELY BUT WILL BE INCLUDED IN THE CONTRACT UNIT PRICE FOR CC&G.

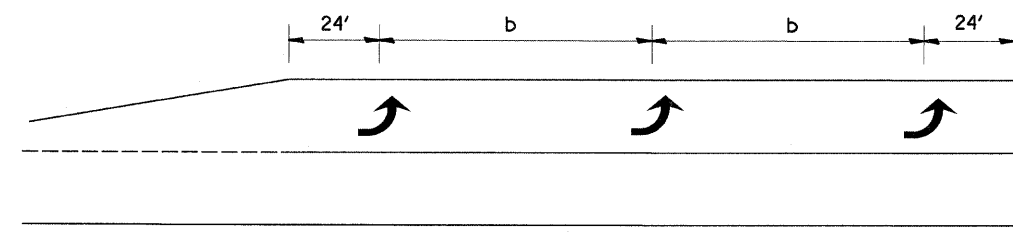
REINFORCEMENT DETAIL FOR COMBINATION CONCRETE CURB AND GUTTER TYPE B-6.24



99' AND UNDER

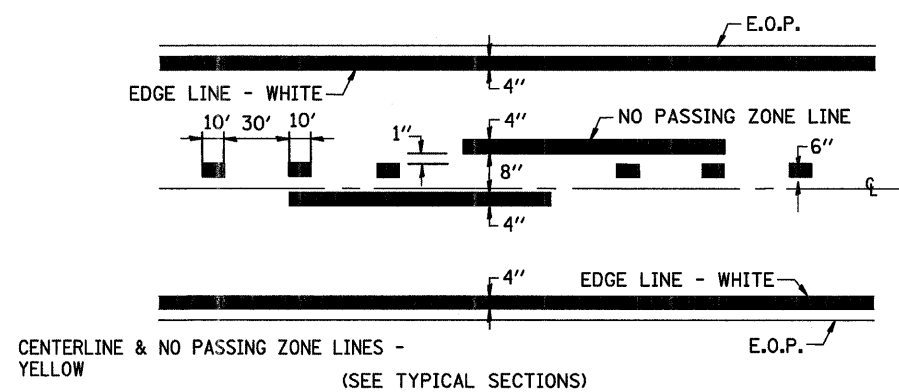
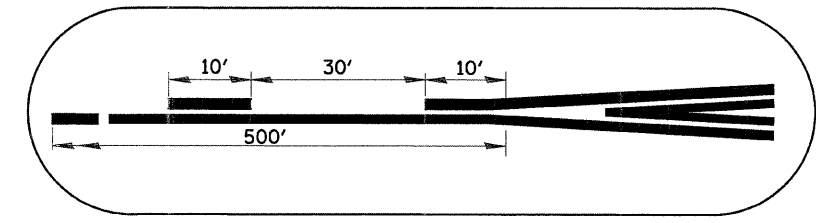


100' TO 149'



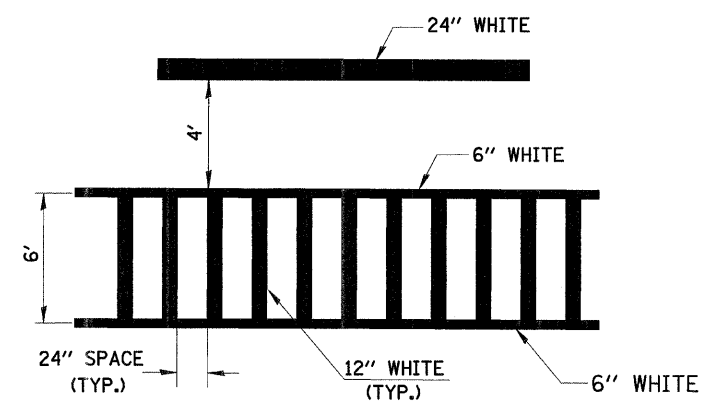
150' AND LONGER

TYPICAL PLACEMENT OF ARROWS IN TURN LANES

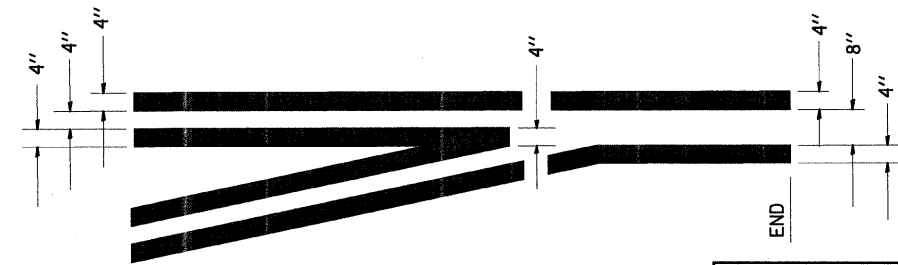


CENTERLINE & NO PASSING ZONE LINES - YELLOW (SEE TYPICAL SECTIONS)

PAVEMENT MARKING



TYPICAL SPACING DETAIL FOR CROSSWALKS AND STOP BARS



TYPICAL APPLICATION @ LEFT TURN LANES

ILLINOIS DEPARTMENT OF TRANSPORTATION
 F.A.U. 2508 - DOUGLAS ROAD
 (U.S. RTE 34 TO U.S. RTE 30)

MISCELLANEOUS DETAILS

SCALE: VERT. _____
 HORIZ. _____

DATE _____ DRAWN BY _____
 CHECKED BY _____

245234 AM
 3/28/2007
 Y:\jbs\set\11\2003\010742.dwg