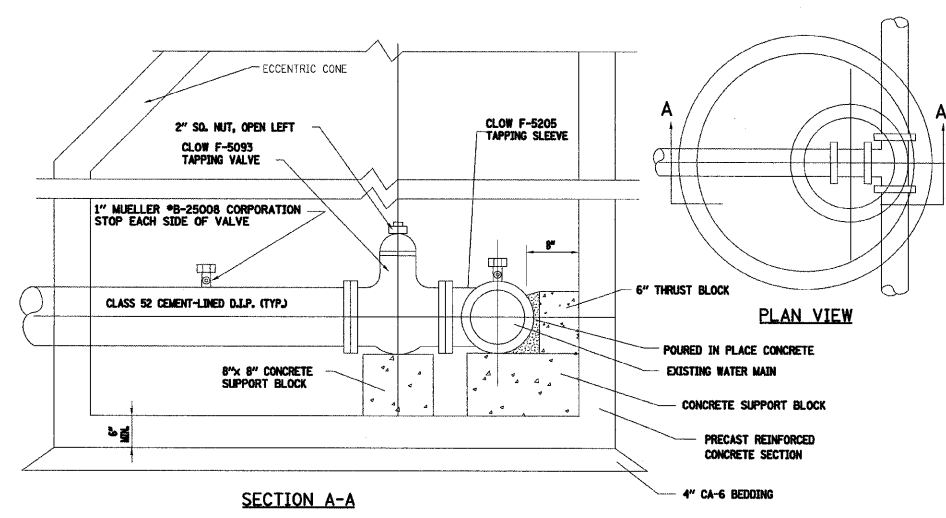


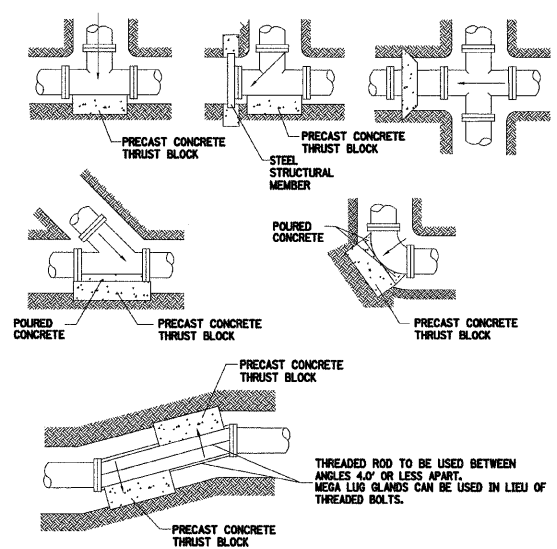
WATER MAIN PRESSURE CONNECTION DETAIL



NOTES:
 C.I. MANHOLE FRAME AND COVER NEEHAH R-1530 OR APPROVED EQUAL WITH STANDARD DUTY, NON-ROCKING TYPE LIDS, ADJUSTING RING HEIGHT NOT TO EXCEED 8" STANDARD VALVE VAULT SPECIFICATIONS REQUIRE ECCENTRIC CONES SEE SEPARATE DETAIL.

OSW-W-1

THRUST BLOCK INSTALLATION DETAIL

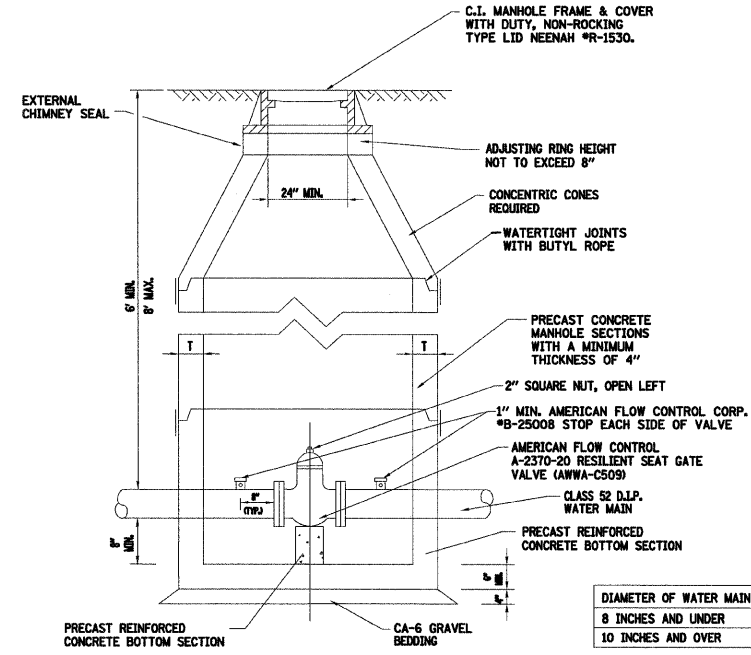


PIPE SIZE	BEARING AREA (SQ. FT.)			
	TEE/PLUG	90°	45°	22-1/2°
6	4	2	1	1
8	6	4	3	1
10	7	5	3	2
12	8	6	4	3
14	12	9	6	4
16	15	12	7	5
18	18	15	9	5
24	40	30	15	10

ALL BLOCKING SHALL BE 12" PRE-CAST CONCRETE BLOCK AGAINST UNDISTURBED EARTH.
 ALL BENDS OR ELBOWS GREATER THAN AND INCLUDING 11-1/4° SHALL HAVE THRUST BLOCKING.

OSW-W-2

STANDARD VALVE VAULT DETAIL

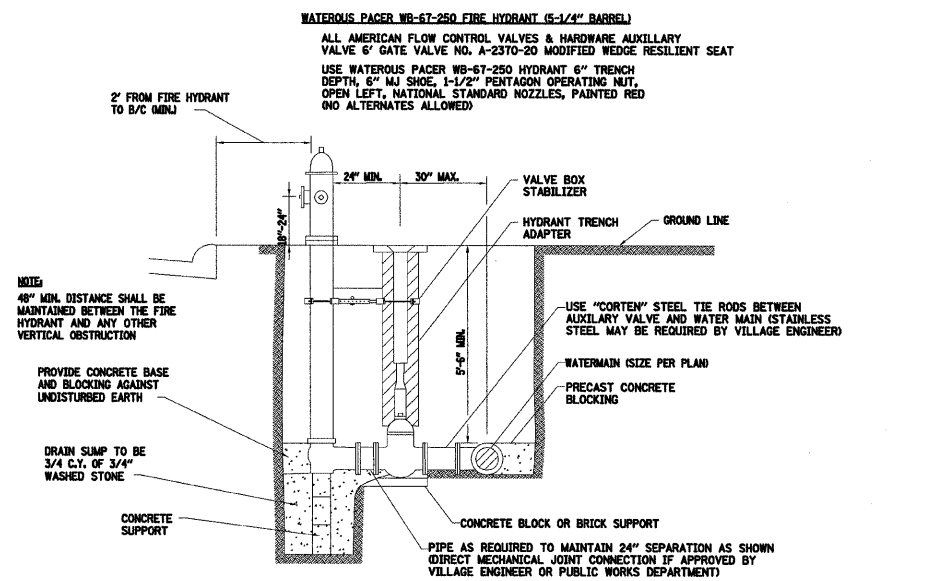


NOTES:
 1. DRAIN FOR VALVE VAULT SHALL BE CONSTRUCTED ONLY WHEN SHOWN ON PLANS.
 2. FOR PRESSURE CONNECTION SEE SEPARATE DETAIL.

DIAMETER OF WATER MAIN	D	T
8 INCHES AND UNDER	4'-0"	4"
10 INCHES AND OVER	5'-0"	5"

OSW-W-8

FIRE HYDRANT INSTALLATION DETAIL



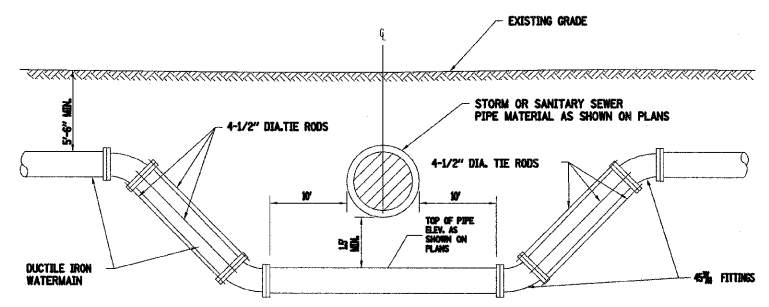
WATEROUS PACER WB-67-250 FIRE HYDRANT (5-1/4" BARREL)
 ALL AMERICAN FLOW CONTROL VALVES & HARDWARE AUXILIARY VALVE 6" GATE VALVE NO. A-2370-20 MODIFIED WEDGE RESILIENT SEAT
 USE WATEROUS PACER WB-67-250 HYDRANT 6" TRENCH DEPTH, 6" MJ SHOE, 1-1/2" PENTAGON OPERATING NUT, OPEN LEFT, NATIONAL STANDARD NOZZLES, PAINTED RED (NO ALTERNATES ALLOWED)

NOTE:
 48" MIN. DISTANCE SHALL BE MAINTAINED BETWEEN THE FIRE HYDRANT AND ANY OTHER VERTICAL OBSTRUCTION
 PROVIDE CONCRETE BASE AND BLOCKING AGAINST UNDISTURBED EARTH
 DRAIN SUMP TO BE 3/4 C.T. OF 3/4" WASHED STONE
 CONCRETE SUPPORT
 USE "CORTEN" STEEL TIE RODS BETWEEN AUXILIARY VALVE AND WATER MAIN (STAINLESS STEEL MAY BE REQUIRED BY VILLAGE ENGINEER)
 WATERMAIN (SIZE PER PLAN)
 PRECAST CONCRETE BLOCKING
 PIPE AS REQUIRED TO MAINTAIN 24" SEPARATION AS SHOWN (DIRECT MECHANICAL JOINT CONNECTION IF APPROVED BY VILLAGE ENGINEER OR PUBLIC WORKS DEPARTMENT)

NOTE:
 FIRE HYDRANTS SHALL BE PLACED A MAXIMUM OF 300 FEET APART. LOCATION OF HYDRANTS MUST BE APPROVED BY VILLAGE ENGINEER OR PUBLIC WORKS DEPARTMENT.

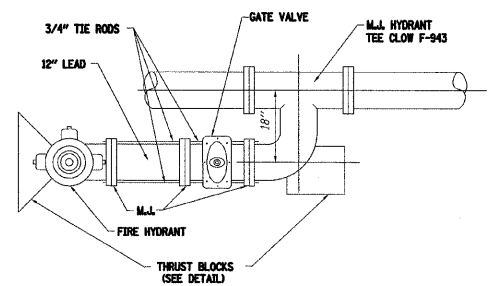
OSW-W-5

WATER MAIN LOWERING DETAIL



OSW-W-6

SPECIAL FIRE HYDRANT CONNECTION FOR LIMITED ACCESS AREAS



NOTES:
 1. CONTRACTOR WILL SUPPLY HYDRANTS WITH AUXILIARY VALVES AND MECHANICAL JOINT CONNECTIONS WITH PLAIN END CAST IRON PIPE BETWEEN HYDRANT AND VALVE.
 2. THIS ITEM SHALL BE PAID FOR AT THE CONTRACT UNIT PRICE EACH FOR FIRE HYDRANT ASSEMBLY OR FIRE HYDRANT ASSEMBLY RELOCATION WHICH PRICE SHALL INCLUDE PROVIDING AND INSTALLING THE HYDRANT, THE VALVE AND VALVE BOX, THE CONNECTION PIPES, BACKFILL MATERIAL, AND THRUST BLOCK AS DETAILED.

W-9

ILLINOIS DEPARTMENT OF TRANSPORTATION
 F.A.U. 2508 - DOUGLAS ROAD
 (U.S. RTE 34 TO U.S. RTE 30)

MISCELLANEOUS DETAILS

SCALE: VERT. _____
 HORIZ. _____
 DATE _____ DRAWN BY _____
 CHECKED BY _____

DATE _____ BY _____
 SURVEYED _____
 PLOTTED _____
 CHECKED _____
 NOTE BOOK NO. _____
 FILE NAME _____

DATE _____ BY _____
 SURVEYED _____
 PLOTTED _____
 CHECKED _____
 NOTE BOOK NO. _____
 FILE NAME _____

245235 AM
 3/28/2007
 Y:\Jobs\smh\11\200A\010742.dwg\cd\4fn_dwg\142.dwg