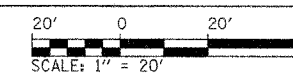
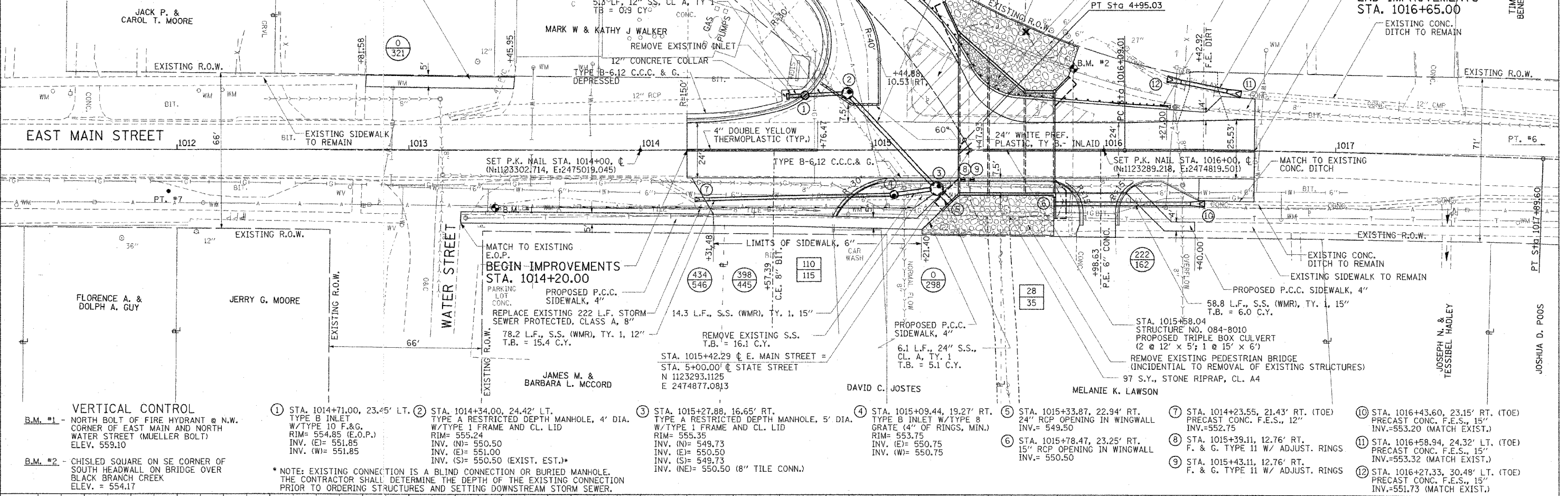


PROPOSED C MAIN ST. CURVE-1 DATA
 PI STA. = 1016+99.31
 $\Delta = 2^\circ 04' 10''$ (RT)
 $D = 1^\circ 08' 45''$
 $R = 5,000.00'$
 $T = 94.44'$
 $L = 180.59'$
 $E = 0.82'$
 P.C. STA = 1016+09.01
 (N:1123288.6099 E:2474810.5114)
 P.T. STA = 1017+89.60
 (N:1123279.6795 E:2474630.1548)

PROPOSED C STATE ST. CURVE-2 DATA
 PI STA. = 4+43.40
 $\Delta = 20^\circ 16' 09''$ (RT)
 $D = 19^\circ 25' 20''$
 $R = 295.00'$
 $T = 52.73'$
 $L = 104.36'$
 $E = 4.68'$
 P.R.C. STA = 3+90.67
 (N:1123214.3148 E:2474951.9721)
 P.T. STA = 4+95.03
 (N:1123288.9890 E:2474879.8489)



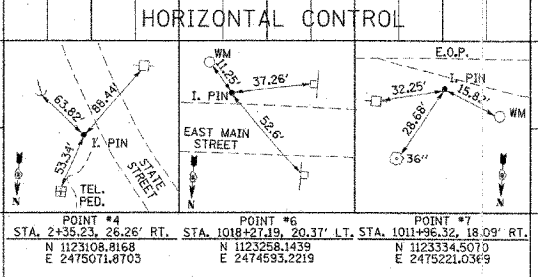
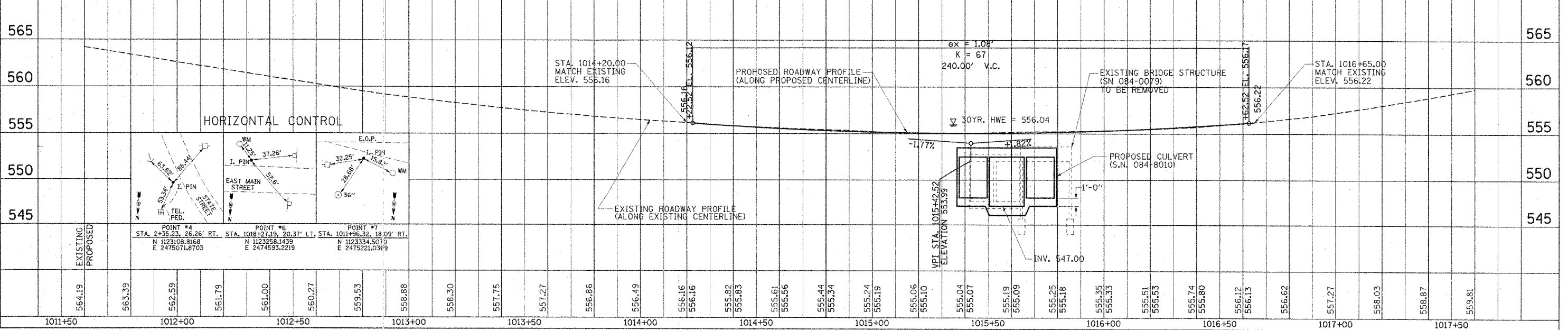
F.A. RTE.	SECTION	COUNTY	TOTAL SHEETS	SHEET NO.
556	04-00119-03-BR	SANGAMON	26	6
STA. 1014+20.00		TO STA. 1016+65.00		
FED. ROAD DIST. NO. 5 ILLINOIS FED. AID PROJECT				



VERTICAL CONTROL
 B.M. #1 - NORTH BOLT OF FIRE HYDRANT @ N.W. CORNER OF EAST MAIN AND NORTH WATER STREET (MUELLER BOLT) ELEV. 559.10
 B.M. #2 - CHISLED SQUARE ON SE CORNER OF SOUTH HEADWALL ON BRIDGE OVER BLACK BRANCH CREEK ELEV. = 554.17

- ① STA. 1014+71.00, 23.45' LT. TYPE B INLET W/TYPE 10 F.&G. RIM= 554.85 (E.O.P.) INV. (E)= 551.85 INV. (W)= 551.85
- ② STA. 1014+34.00, 24.42' LT. TYPE A RESTRICTED DEPTH MANHOLE, 4' DIA. W/TYPE 1 FRAME AND CL. LID RIM= 555.24 INV. (N)= 550.50 INV. (E)= 551.00 INV. (S)= 550.50 (EXIST. EST.)
- ③ STA. 1015+27.88, 16.65' RT. TYPE A RESTRICTED DEPTH MANHOLE, 5' DIA. W/TYPE 1 FRAME AND CL. LID RIM= 555.35 INV. (N)= 549.73 INV. (E)= 550.50 INV. (S)= 549.73 INV. (NE)= 550.50 (8" TILE CONN.)
- ④ STA. 1015+09.44, 19.27' RT. TYPE B INLET W/TYPE 8 GRATE (4" OF RINGS, MIN.) RIM= 553.75 INV. (E)= 550.75 INV. (W)= 550.75
- ⑤ STA. 1015+33.87, 22.94' RT. 24" RCP OPENING IN WINGWALL INV.= 549.50
- ⑥ STA. 1015+78.47, 23.25' RT. 15" RCP OPENING IN WINGWALL INV.= 550.50
- ⑦ STA. 1014+23.55, 21.43' RT. (TOE) PRECAST CONC. F.E.S., 12" INV.=552.75
- ⑧ STA. 1015+39.11, 12.76' RT. F. & G. TYPE 11 W/ ADJUST. RINGS
- ⑨ STA. 1015+43.11, 12.76' RT. F. & G. TYPE 11 W/ ADJUST. RINGS
- ⑩ STA. 1016+43.60, 23.15' RT. (TOE) PRECAST CONC. F.E.S., 15" INV.=553.20 (MATCH EXIST.)
- ⑪ STA. 1016+58.94, 24.32' LT. (TOE) PRECAST CONC. F.E.S., 15" INV.=553.32 (MATCH EXIST.)
- ⑫ STA. 1016+27.33, 30.48' LT. (TOE) PRECAST CONC. F.E.S., 15" INV.=551.73 (MATCH EXIST.)

* NOTE: EXISTING CONNECTION IS A BLIND CONNECTION OR BURIED MANHOLE. THE CONTRACTOR SHALL DETERMINE THE DEPTH OF THE EXISTING CONNECTION PRIOR TO ORDERING STRUCTURES AND SETTING DOWNSTREAM STORM SEWER.



ROADWAY PLAN & PROFILE EAST MAIN ST. STA. 1014+20.00 TO STA. 1016+65.00