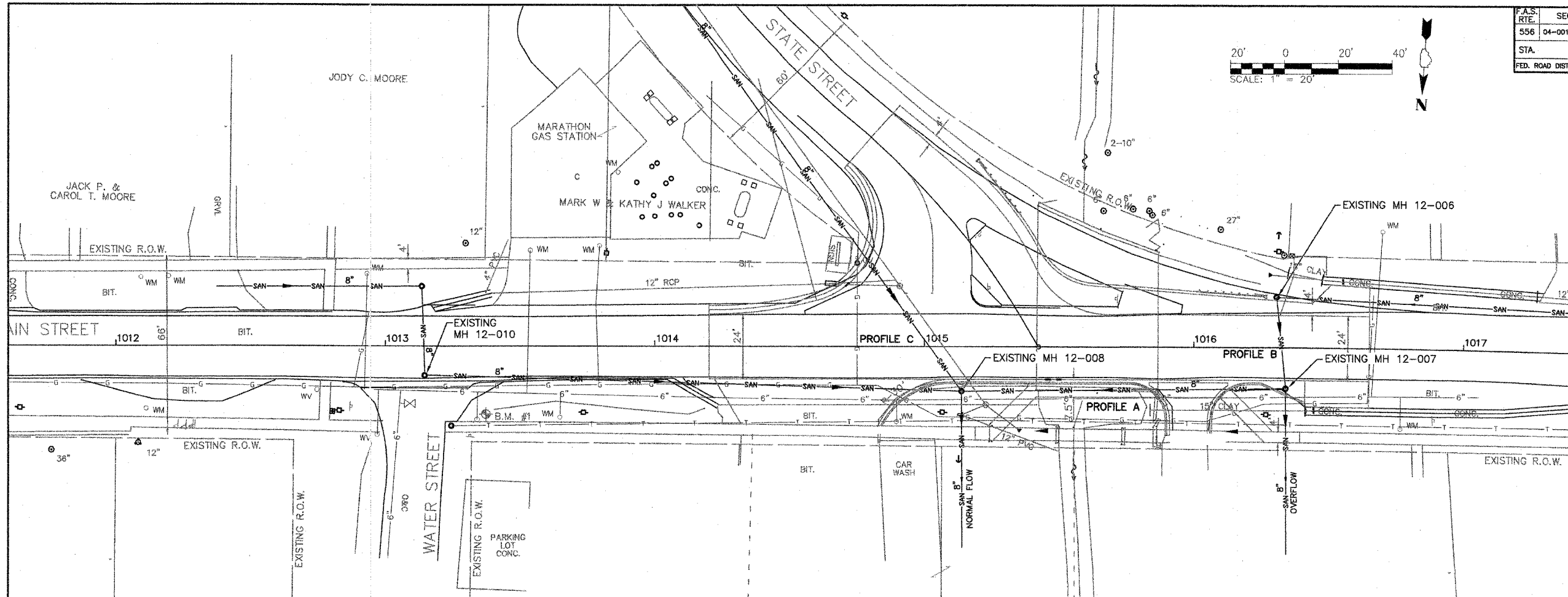
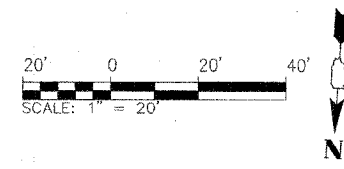
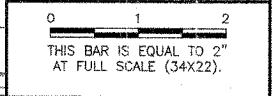


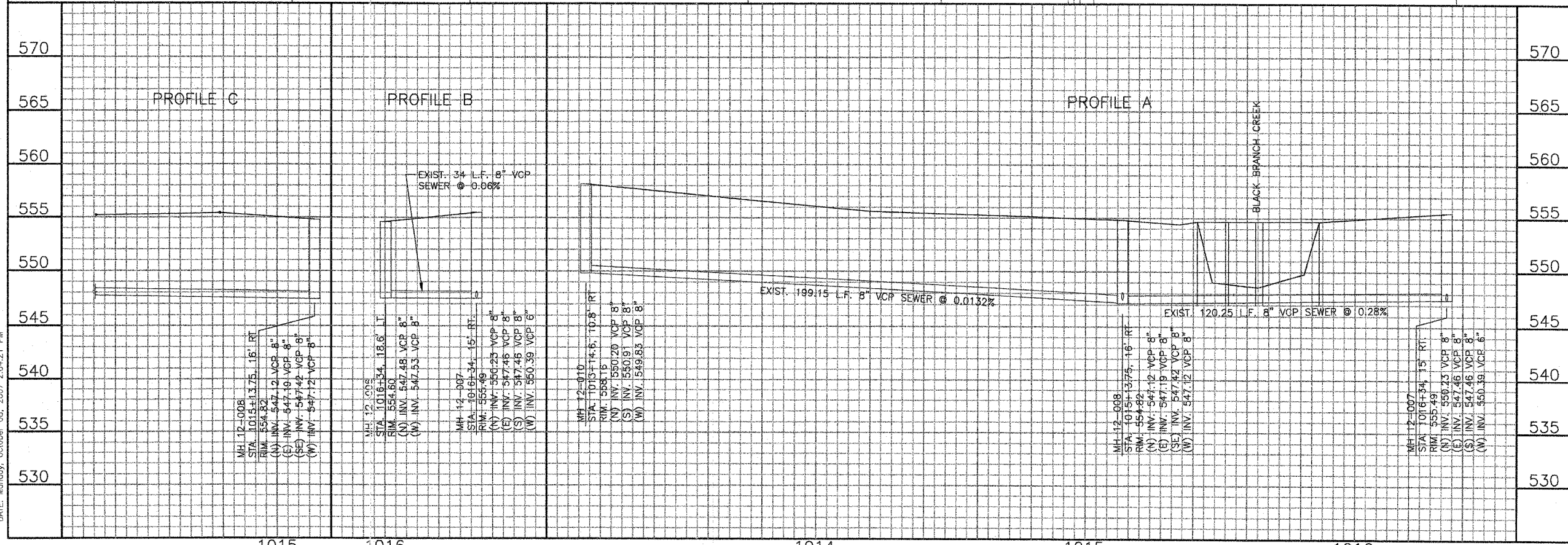
F.A.S. RTE.	SECTION	COUNTY	TOTAL SHEETS	SHEET NO.
556	04-00119-03-BR	SANGAMON	26	9
STA.		TO STA.		
FED. ROAD DIST. NO.5 ILLINOIS FED. AID PROJECT				



REVISIONS		
NUMBER	BY	DATE



**VILLAGE OF ROCHESTER
 ROCHESTER, ILLINOIS**
**WATERMAIN & SANITARY SEWER REPLACEMENT
 EAST MAIN STREET BRIDGE**
**EXISTING MAIN STREET SEWER
 EXISTING PLAN AND PROFILE A, B & C**



© Copyright CMT, Inc.

CMT
 CRAIG MORRIS & TILLY, INC.
 CONSULTING ENGINEERS
 License No. 894-000618

DESIGN BY: SUB
 DRAWN BY: RCM
 CHECKED BY: [Signature]
 APPROVED BY: [Signature]
 DATE: OCTOBER 15, 2007
 JOB No: 07044-04-00

PROFESSIONAL ENGINEER - ILLINOIS
 SIGNATURE: [Signature]
 EXPIRES: 11/30/07

SHEET 1 OF 6 SHEETS

PATH: L:\SangamonCo_0402901\Draw\Sheets
 FILE: C:\SWR_PLAN-PROJAN-Exist.dwg
 DRAWN BY: Shannon Brown
 DATE: Monday, October 08, 2007 2:04:21 PM