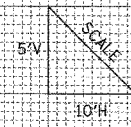
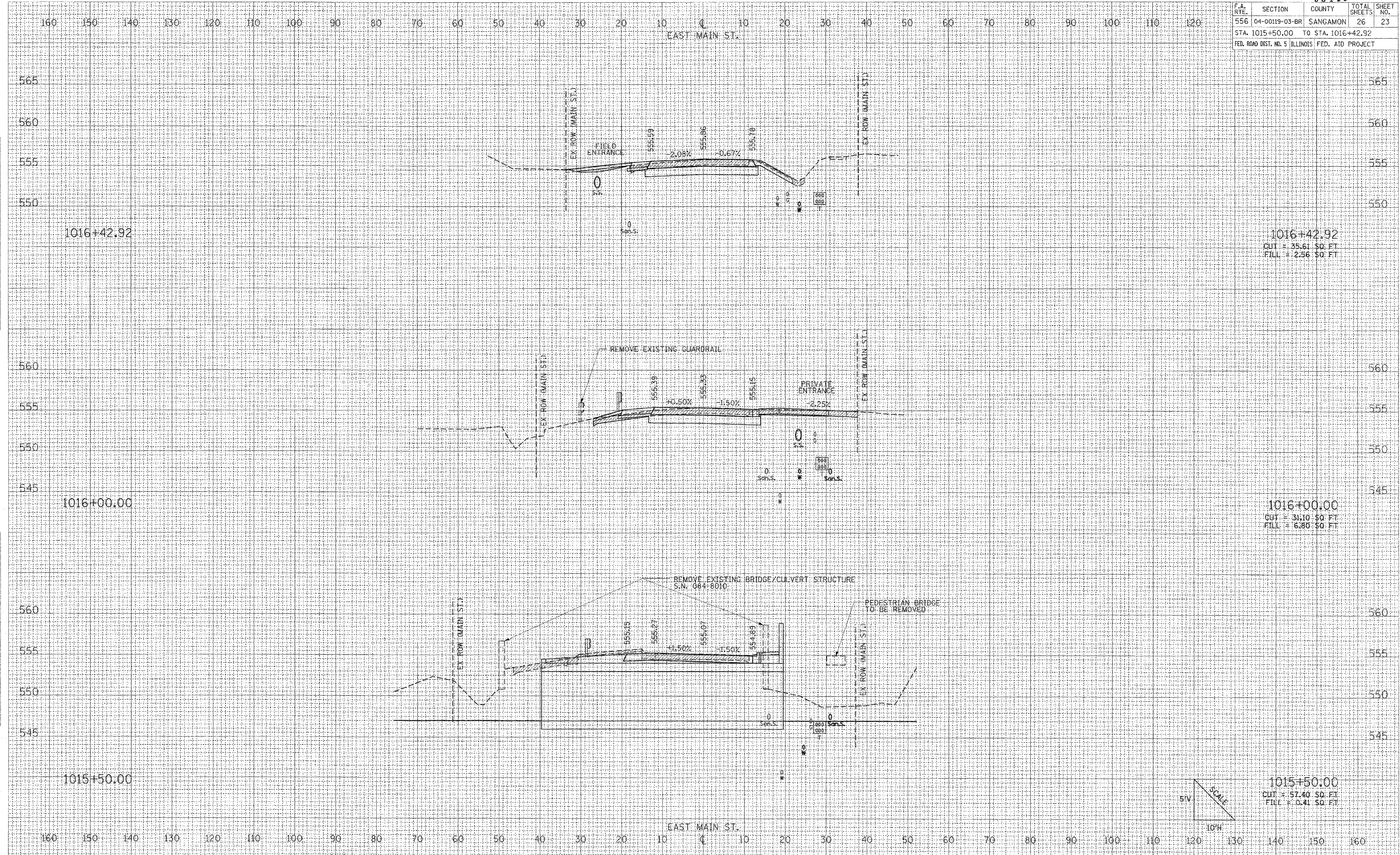


| F.A. RTE. | SECTION | COUNTY | TOTAL SHEETS | SHEET NO. |
|---|----------------|----------|--------------|-----------|
| 556 | 04-00119-03-BR | SANGAMON | 26 | 23 |
| STA. 1015+50.00 TO STA. 1016+42.92 | | | | |
| FED. ROAD DIST. NO. 5 ILLINOIS FED. AID PROJECT | | | | |



1015+50.00
CUT = 57.40 SQ. FT.
FILL = 0.41 SQ. FT.

1016+00.00
CUT = 31.10 SQ. FT.
FILL = 6.80 SQ. FT.

1016+42.92
CUT = 35.61 SQ. FT.
FILL = 2.56 SQ. FT.

FINAL SURVEY BY DATE
SURVEYED BY DATE
NOTE BOOK NO.
TEMPLATE NO.
AREAS CHECKED

ORIGINAL SURVEY BY DATE
SURVEYED BY DATE
DRAWN BY DATE
AREAS CHECKED

PLOT DATE = 11/1/2007
FILE NAME = I:\Sangamon\Co\1842281A\Draw\Avalued\1842281A.dwg
PLOT SCALE = 10.0000 / IN.
USER NAME = Brad Downen