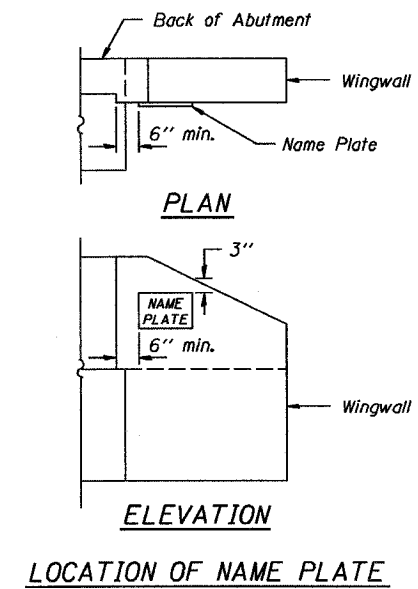


DETAIL OF NAME PLATE

Material: Best quality brass or bronze.
 Border & Lettering: Raised $\frac{1}{8}$ inch. Square cut and not tapered. Top surface polished.
 Fastenings: Four lugs at least three inches long, cast on back of plate.

SECTIONS D-D



LOCATION OF NAME PLATE

Illinois Department of Transportation	
PASSED APRIL 4, 2005 <i>Thomas J. Demasaleki</i> Engineer of Bridge Design	
APPROVED APRIL 4, 2005 <i>Ralph E. Anderson</i> Engineer of Bridges and Structures	
ISSUED 568-1-1-1986	

NAME PLATE
STANDARD CN