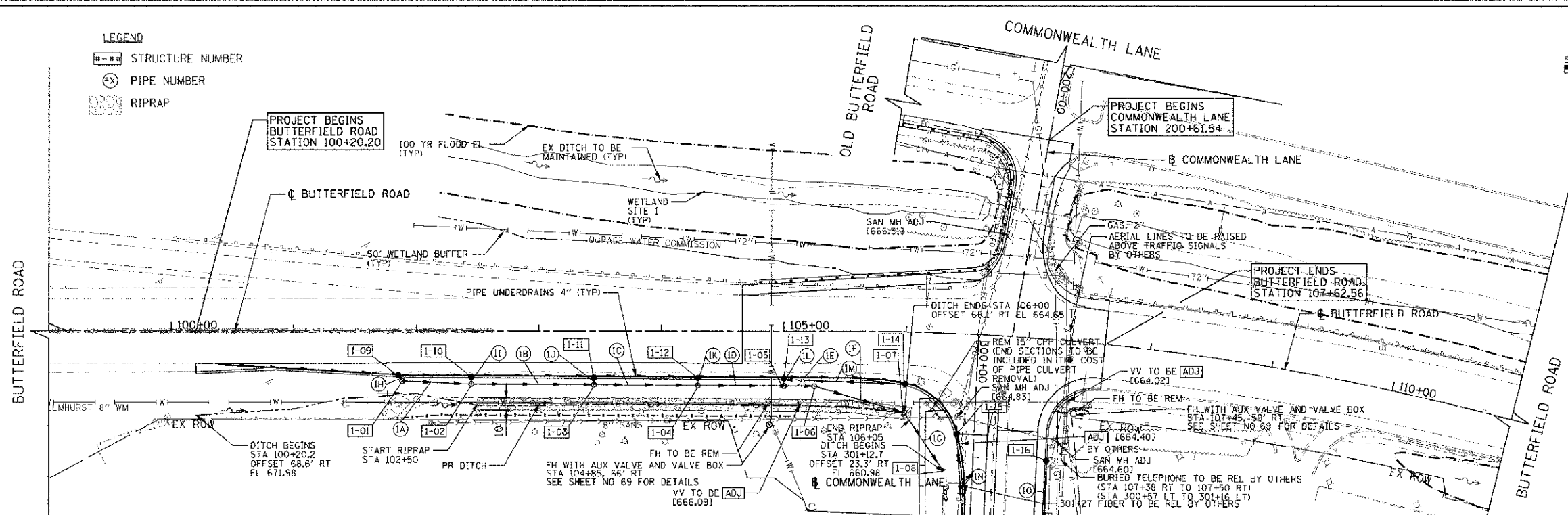
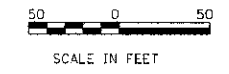


LEGEND
 [Symbol] STRUCTURE NUMBER
 [Symbol] PIPE NUMBER
 [Symbol] RIPRAP



DRAINAGE NOTES:

1. OFFSETS AND TOP OF FRAME OR LID ELEVATIONS FOR STRUCTURES WHICH ARE LOCATED IN THE GUTTER ARE GIVEN AT THE EDGE OF PAVEMENT.
2. OFFSETS FOR STRUCTURES NOT LOCATED IN THE GUTTER ARE GIVEN TO THE CENTER OF THE STRUCTURE. TOP OF FRAME OR LID ELEVATIONS ARE GIVEN TO THE CENTER OF THE FRAME OR LID.
3. ANY EXISTING STORM SEWER TO BE ABANDONED SHALL BE PLUGGED WITH CLASS SI CONCRETE OR BRICK AND MORTAR AND THE COST SHALL BE INCLUDED IN THE COST OF THE PROPOSED STORM SEWER.
4. SEE SHEET 73 FOR MANHOLE WITH RESTRICTOR PLATE DETAIL.

STR NO.	STATION	OFFSET	TYPE	FRAME & GRATE	RIM EL	INVERT ELEVATIONS							
						NORTH	NORTHEAST	EAST	SOUTHEAST	SOUTH	SOUTHWEST	WEST	NORTHWEST
1-01	101+88.7	40.9' RT	MH, TYPE A, 4'-DIAMETER	TYPE 1 FRAME, CLOSED LID	674.35		665.19						667.19
1-02	102+50.0	43.3' RT	MH, TYPE A, 4'-DIAMETER	TYPE 1 FRAME, CLOSED LID	673.13		662.56				664.56		664.56
1-03	103+50.0	43.3' RT	MH, TYPE A, 4'-DIAMETER	TYPE 1 FRAME, CLOSED LID	670.84		662.22				662.24		664.22
1-04	104+35.0	43.3' RT	MH, TYPE A, 4'-DIAMETER	TYPE 1 FRAME, CLOSED LID	668.99		661.95				661.97		663.95
1-05	105+05.0	43.3' RT	MH, TYPE A, 4'-DIAMETER	TYPE 1 FRAME, CLOSED LID	667.85		661.45				661.75		661.75
1-06	105+25.0	43.3' RT	MH, TYPE A, 6'-DIAMETER	2 TYPE 1 FRAME, CLOSED LID, RESTRICTOR PLATE	667.31		661.39				661.41		661.41
1-07	106+00.0	66.5' RT	MH, TYPE A, 4'-DIAMETER	TYPE 8 GRATE	664.65			661.16			661.16		661.16
1-08	301+12.7	23.8' RT	FRC FES 21"	NONE							660.98		
1-09	101+85.0	36.0' RT	CB, TYPE C	TYPE 23 FRAME AND GRATE	673.97				667.24				
1-10	102+50.0	36.6' RT	CB, TYPE A, 4'-DIAMETER	TYPE 23 FRAME AND GRATE	672.79				664.60				
1-11	103+50.0	37.1' RT	CB, TYPE C	TYPE 23 FRAME AND GRATE	670.49				664.27				
1-12	104+35.0	37.5' RT	CB, TYPE C	TYPE 23 FRAME AND GRATE	668.61				664.00				
1-13	105+05.0	37.9' RT	CB, TYPE A, 4'-DIAMETER	TYPE 23 FRAME AND GRATE	667.27		662.09		661.79				
1-14	106+00.0	42.5' RT	CB, TYPE C	TYPE 23 FRAME AND GRATE	665.58					663.04			
1-15	300+81.6	14.1' RT	CB, TYPE C	TYPE 23 FRAME AND GRATE	664.28				661.30				
1-16	301+00.0	59.0' LT	CB, TYPE C	TYPE 23 FRAME AND GRATE	664.39				662.08				

COMMONWEALTH LANE
 MATCH LINE STATION 301+50
 SEE SHEET NO. 29

PIPE NO.	STRUCTURE FROM	STRUCTURE TO	DESCRIPTION	CLASS	TYPE	SIZE (IN)	LENGTH (FT)	SLOPE (%)	TBF (CU YD)
1A	1-01	1-02	STORM SEWERS	A	2	12	52.2	1.05%	0.0
1B	1-02	1-03	STORM SEWERS	A	2	15	96.0	0.32%	0.0
1C	1-03	1-04	STORM SEWERS	A	2	15	81.0	0.32%	0.0
1D	1-04	1-05	STORM SEWERS	WM REQ	2	15	66.0	0.32%	0.0
1E	1-05	1-06	STORM SEWERS	A	2	15	21.0	0.32%	0.0
1F	1-06	1-07	STORM SEWERS	WM REQ	2	15	72.5	0.32%	0.0
1G	1-07	1-08	STORM SEWERS	A	1	21	51.8	0.35%	0.0
1H	1-08	1-01	STORM SEWERS	A	2	12	5.0	1.00%	3.9
1I	1-10	1-02	STORM SEWERS	A	2	12	4.0	1.00%	4.0
1J	1-11	1-03	STORM SEWERS	A	2	12	5.0	1.00%	3.5
1K	1-12	1-04	STORM SEWERS	A	2	12	5.0	1.00%	2.4
1L	1-13	1-05	STORM SEWERS	A	2	12	4.0	1.00%	2.4
1M	1-14	1-13	STORM SEWERS	A	1	12	95.2	1.00%	30.3
1N	1-15	2-03	STORM SEWERS	A	1	12	65.9	0.50%	12.7
1O	1-16	2-08	STORM SEWERS	A	1	12	112.9	0.50%	12.0

