

INDEX OF SHEETS:

1. COVER SHEET
2. SUMMARY OF QUANTITIES, GENERAL NOTES
3. TRAFFIC CONTROL PLAN
4. DISTRICT STANDARD
5. FRAMING PLAN & GENERAL NOTES
- 6 - 46 EXISTING BRIDGE PLANS

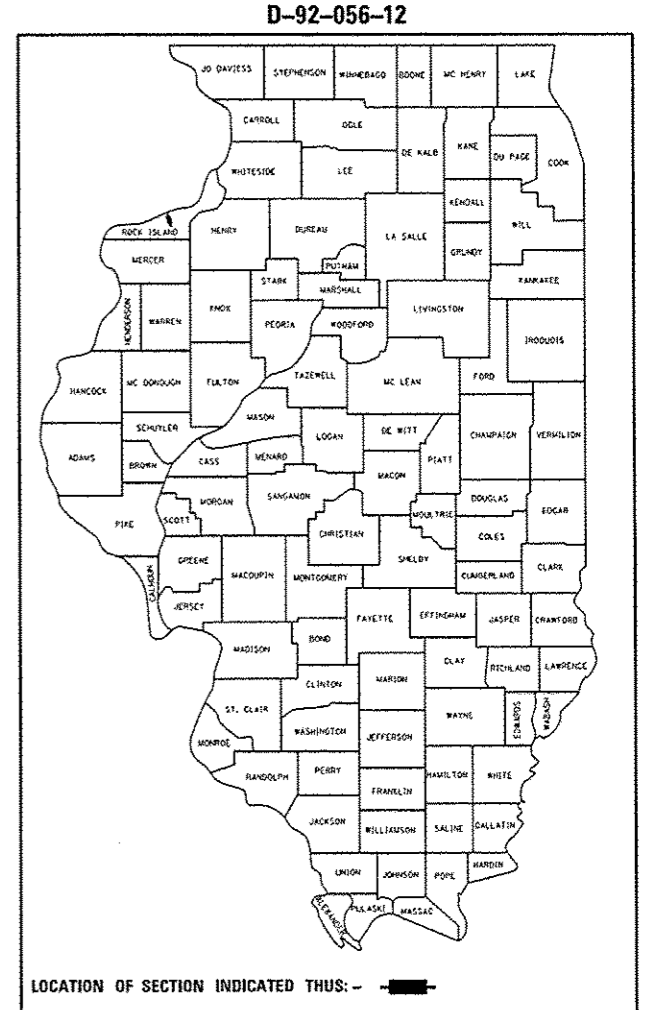
STANDARDS:

- 701101-02 OFF-RD OPERATIONS, 2L, 2W, MORE THAN 15' (4.5 m) AWAY
- 701400-05 APPROACH TO LANE CLOSURE, FREEWAY/EXPRESSWAY
- 701401-06 LANE CLOSURE, FREEWAY/EXPRESSWAY
- 701402-09 LANE CLOSURE, FREEWAY/EXPRESSWAY, WITH BARRIER
- 701411-08 LANE CLOSURE, MULTILANE, AT ENTRANCE OR EXIT RAMP, FOR SPEEDS > 45 MPH
- 701901-02 TRAFFIC CONTROL DEVICES
- 704001-07 TEMPORARY CONCRETE BARRIER
- 720011-01 METAL POSTS FOR SIGNS, MARKERS & DELINEATORS
- 728001-01 TELESCOPING STEEL SIGN SUPPORT
- 729001-01 APPLICATIONS OF TYPES A & B METAL POSTS (FOR SIGNS AND MARKERS)

STATE OF ILLINOIS
DEPARTMENT OF TRANSPORTATION
DIVISION OF HIGHWAYS
PROPOSED
HIGHWAY PLANS

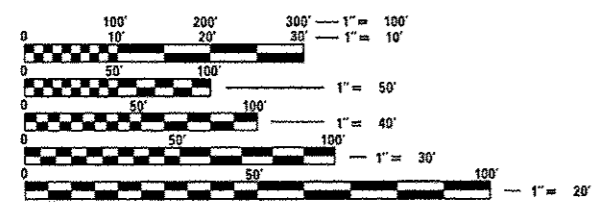
FAI ROUTE 80 (I-80)
SECTION D2 BRIDGE PAINTING 2012-2
ROCK ISLAND COUNTY
C-92-087-12

F.A.I. RTE.	SECTION	COUNTY	TOTAL SHEETS	SHEET NO.
80	D2 Bridge Painting 2012-2	ROCK ISLAND	46	1
FED. ROAD DIST. NO.		ILLINOIS	CONTRACT NO. 64H81	



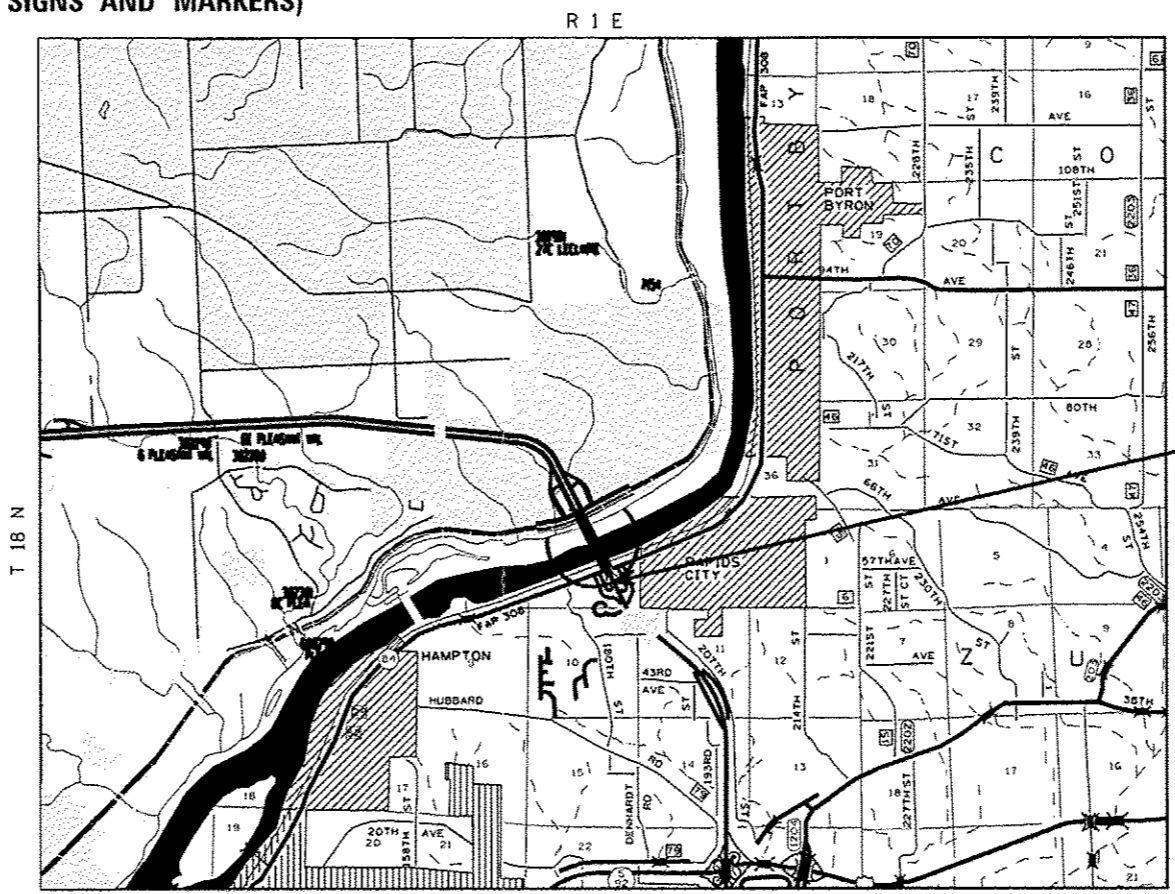
LOCATION OF SECTION INDICATED THUS: - [black rectangle] -

PROJECT LOCATION
SN: 081-0011



FULL SIZE PLANS HAVE BEEN PREPARED USING STANDARD ENGINEERING SCALES. REDUCED SIZED PLANS WILL NOT CONFORM TO STANDARD SCALES. IN MAKING MEASUREMENTS ON REDUCED PLANS, THE ABOVE SCALES MAY BE USED.

J.U.L.I.E.
 JOINT UTILITY LOCATION INFORMATION FOR EXCAVATION
 1-800-892-0123
 OR 811



NET LENGTH OF IMPROVEMENT = 3,487 FEET = 0.66 MILES
 GROSS LENGTH OF IMPROVEMENT = 3,487 FEET = 0.66 MILES

PROJECT ENGINEER: Mahmoud Etemadi (815)-284-5393
 HAMPTON TOWNSHIP, SECTION 3
CONTRACT NO. 64H81

STATE OF ILLINOIS
 DEPARTMENT OF TRANSPORTATION
 DIVISION OF HIGHWAYS

SUBMITTED Oct 15 2012
Paul Roeten
 DEPUTY DIRECTOR OF HIGHWAYS, REGION ENGINEER

Dec 7 2012
John D. Baranzoli PE
 ENGINEER OF DESIGN AND ENVIRONMENT

Dec 7 2012
William R. Frey
 DIRECTOR OF HIGHWAYS, CHIEF ENGINEER

PRINTED BY THE AUTHORITY
OF THE STATE OF ILLINOIS