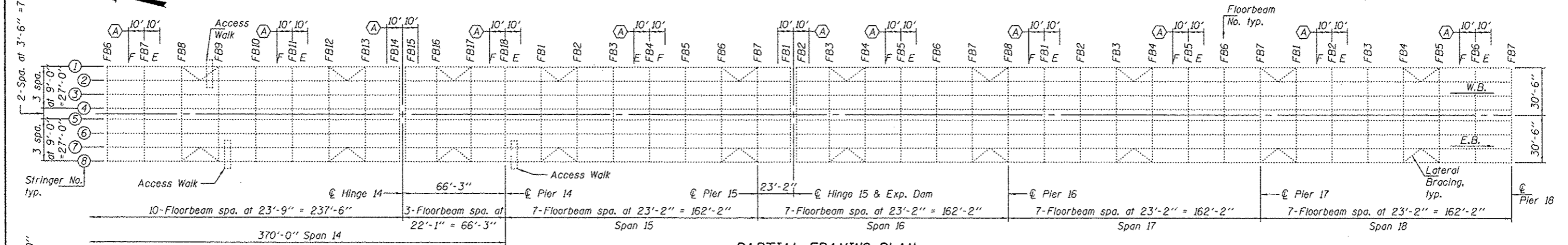
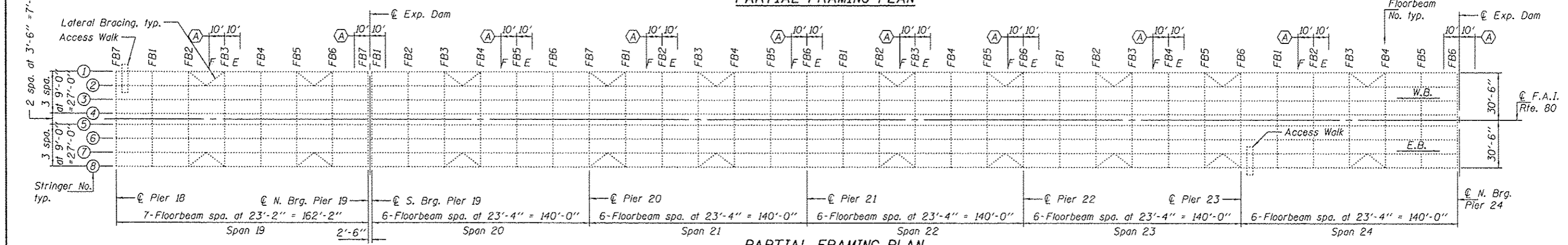


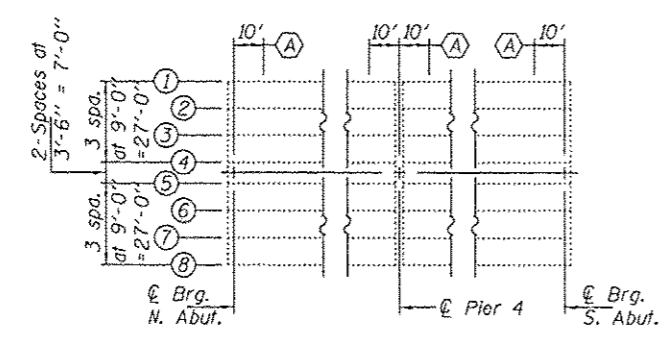
**PARTIAL FRAMING PLAN**



**PARTIAL FRAMING PLAN**



**PARTIAL FRAMING PLAN**



**PARTIAL PLAN AT ABUTS. & PIER 4**

(A) - Clean & Paint Steel (10' each side of joint)

**GENERAL NOTES**

Cleaning and painting of the existing structural steel shall be as specified in the special provision for "Cleaning and Painting Existing Steel Structures". All beams, bearings and other structural steel within 10 ft. (measured along beam) of either side of deck joints shall be cleaned per Near White Blast Cleaning - SSPC-SPI0. The exterior surfaces and bottom of the bottom flange of the fascia beams shall be cleaned per Commercial Grade Power Tool Cleaning - SSPC-SPI5.

The designated areas cleaned per Near White Blast Cleaning and per Commercial Grade Power Tool Cleaning shall be painted according to the requirements of Paint System 1 - OZ/E/U. The color of the final finish coat for all interior and exterior steel surfaces shall be Interstate Green, Munsell No. 7.5G 4/8.

Original existing Structural Steel details have been included in sheets 2 thru 22 of 42, to aid the contractor in estimating quantities. Also included in sheets 23 thru 42 of 42, are recent Structural Steel repair details. These recent repair areas are to be omitted from the areas to be cleaned and painted under this contract. However, at the discretion of the contractor to reduce cost where appropriate, areas of recently repaired steel that are limited in size may be included to be cleaned and painted.

A minimum of 4 air monitors will be required to monitor abrasive blasting operations at this site, see special provision for "Containment and Disposal of Lead Paint Cleaning Residues."

Note:  
Girders, lateral bracing between girders and inspection walkway not shown for clarity.

**TOTAL BILL OF MATERIAL**

ITEM	UNIT	QUANTITY
Cleaning and Painting Steel Bridge	L.S.	1
Containment and Disposal of Lead Paint Cleaning Residuals	L.S.	1

DESIGNED - ATH <i>Adrian T. Halloway</i>	EXAMINED - <i>Timothy A. Auld</i>	DATE - DECEMBER 11, 2012
CHECKED - MKC <i>Kyle M. Steffen</i>	PASSED - <i>Timothy A. Auld</i>	
CHECKED - ATH MKC	ACTING ENGINEER OF STRUCTURAL SERVICES	ACTING ENGINEER OF BRIDGES AND STRUCTURES

STATE OF ILLINOIS  
DEPARTMENT OF TRANSPORTATION

GENERAL PLAN & ELEVATION  
I-80 OVER THE MISSISSIPPI RIVER  
SN 081-0011  
SHEET NO. 1 OF 42 SHEETS

F.A. RTE.	SECTION	COUNTY	TOTAL SHEETS	SHEET NO.
80	D2 BRIDGE PAINTING 2012-	ROCK ISLAND	46	5
CONTRACT NO. 64H81				
ILLINOIS FED. AID PROJECT				