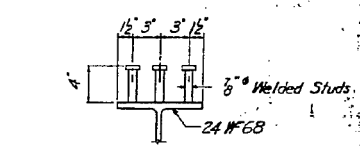
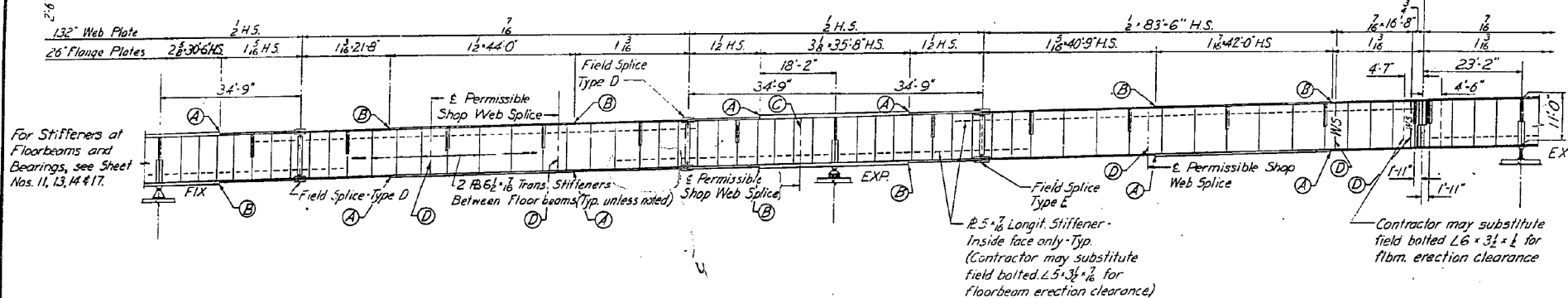
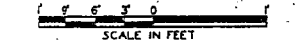


SHEAR CONNECTORS FOR GIRDER SPANS



WELDED STUD SHEAR CONNECTOR DETAIL

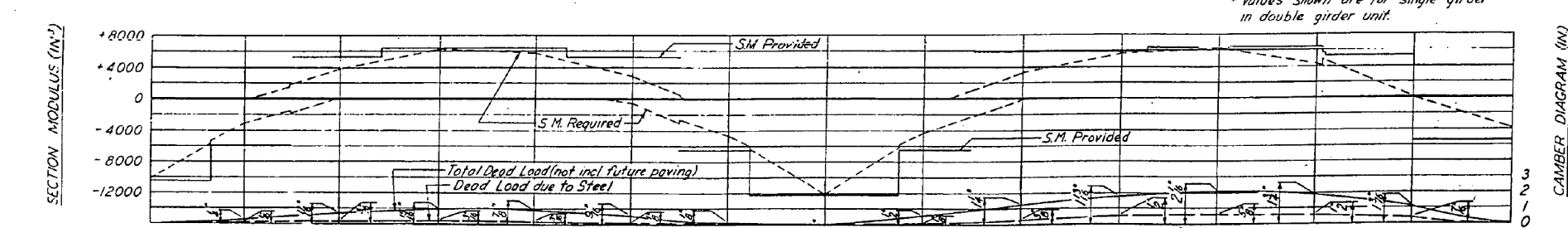


EXTERIOR ELEVATION, SOUTH GIRDER

	REACT	SHEAR	SHEAR	SHEAR	SHEAR	SHEAR	SHEAR	REACT	SHEAR	SHEAR	SHEAR	SHEAR	SHEAR	SHEAR	SHEAR	HINGE	SHEAR*	REACT*
D	.864	.372	.225	.120	.25	.146	.290	.399	.988	.430	.305	.159	.54	.87	.227	.287	.177	.290 (257)
L	.303	.158	.123	.91	.67	.94	.126	.161	.305	.155	.120	.87	.59	.78	.113	.139	.77	.146 (-62)
I	.53	.30	.26	.21	.17	.22	.26	.31	.53	.29	.25	.20	.15	.18	.23	.26	.15	.26 (-11)
TOTAL	.1220	.560	.374	.232	.109	.262	.442	.591	.1346	.614	.450	.266	.128	.183	.363	.452	.269	.462 (-184)

	MOMENT	MOMENT	MOMENT	MOMENT	MOMENT	MOMENT	MOMENT	MOMENT	MOMENT	MOMENT	MOMENT	MOMENT	MOMENT	MOMENT	MOMENT	MOMENT	MOMENT
D	-11348	-2727(-2445)	-2497(-2230)	+5276	+4709	+1334(+1166)	-5392	-14629	-4682	+2381(+2119)	+6070	+7292	+5271	0	-4107		
L	-5122	-2479(-1634)	-2898(-1877)	+3721	+3626	-2687(-1791)	-2408	-5106	-2463	+3014(+1941)	+3761	+3574	+2305	0	-1610		
I	.891	.503(+284)	.504(+326)	.647	.631	+454(+311)	.488	-808	-480	+524(+338)	+654	+617	+401	0	-206		
TOTAL	-17361	-5709(-527)	-5899(+27)	+9644	+8966	+4475(-936)	-8288	-20623	-7623	+5919(+160)	+10485	+11483	+7977	0	-5923		

NOTES:
 For General Notes and Design Criteria, see Sheet No. 3.
 Reactions and Shears are in Kips.
 Moments are in Foot-Kips.
 Structural metalwork noted as "H.S." shall be Low Alloy High Strength Steel, ASTM A441-63T. Metalwork not otherwise noted shall conform to A.S.T.M. A36-62T.
 All floorbeams and transverse stiffeners shall be set normal to profile grade.
 -WS- Denotes required Shop Web Splice.
 For Single Girder Cross-Section, see Sheet No. 4.
 For Double Girder Cross-Section, see Sheet No. 6.
 For Girder Web Geometry, see Sheet No. 16.
 (A) Denotes butt weld radiographing. See Sheet No. 7 for description of notation.



SECTION MODULUS & CAMBER DIAGRAM

IOWA STATE HIGHWAY COMMISSION
 AND ILLINOIS DIVISION OF HIGHWAYS
 INTERSTATE BRIDGE
 OVER MISSISSIPPI RIVER AT LE CLAIRE, IOWA
 CONTRACT NO 2-SUPERSTRUCTURE
 STRESS SHEET - 2
 SCALE IN FEET, UNLESS NOTED
 MODJESKI & MASTERS, ENGINEERS
 SHEET NO. 5 OF 41
 MAY 1954

Project N°: I-80-B(31)310 Design N°: 163A Scott County File N°: 21704