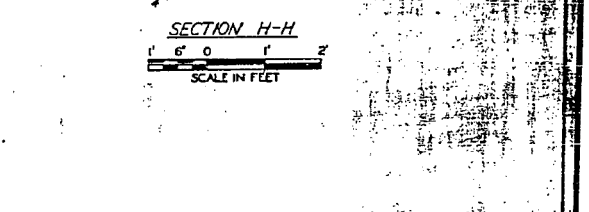
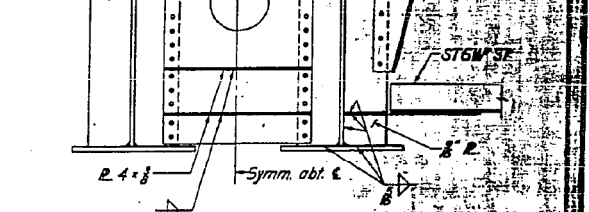
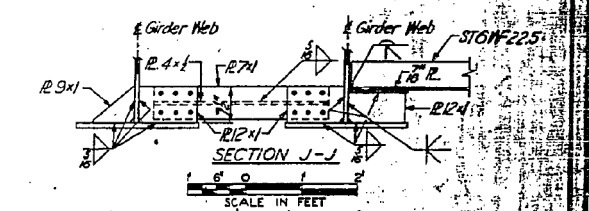
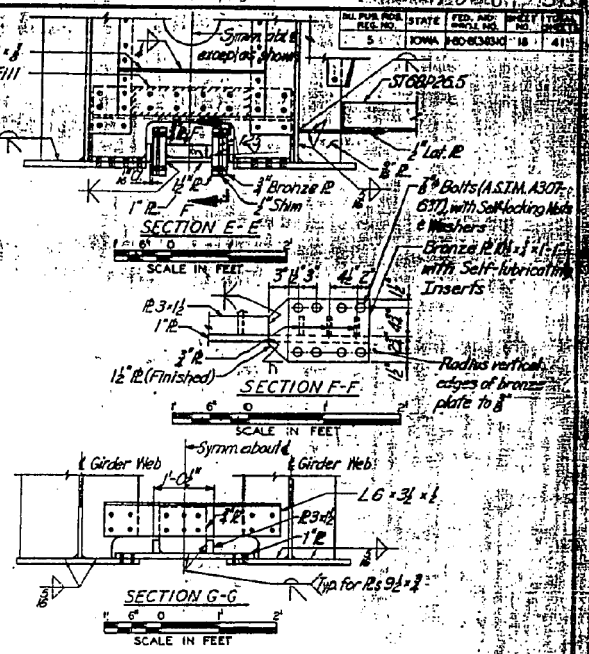


PLAN OF WIND TONGUE AT HINGE NEAR PIER 13 AND PIER 14

**NOTES:**  
 For General Notes, see Sheet No. 3.  
 For additional floorbeam and girder details, see Sheet Nos. 11 & 14.  
 Bronze plates shall conform to ASTM B200-61, Alloy No. 2.  
 Finished surfaces shall be planed in the direction of movement after welding of connected plates is completed.  
 All material shall be A.S.T.M. A36-62T unless noted.



IOWA STATE HIGHWAYS COMMISSION  
 AND ILLINOIS DIVISION OF HIGHWAYS  
 INTERSTATE BRIDGE  
 OVER MISSISSIPPI RIVER AT LE CLAIRE, IOWA  
 CONTRACT NO 2-SUPERSTRUCTURE

**WIND TONGUE DETAILS**

SCALE IN FEET UNLESS NOTED  
 MOJESKI & MASTERS, ENGINEERS

MAY 1964 SHEET NO. 18 OF 41

Project N° I-80-B(31) 310 Design N° 163A Scott County File N° 21704 DR. RUCKER, C.E.

0221	001	1673	3042	2719	1734
0221	001	1674	3042	2734	1734

DESIGNED	VHV	EXAMINED	Timothy A. Daulton	DATE	OCTOBER 12, 2012
CHECKED	DAB	PASSED	ACTING ENGINEER OF STRUCTURAL SERVICES		
DRAWN	baliva		ACTING ENGINEER OF BRIDGES AND STRUCTURES		
CHECKED	VHV DAB				

STATE OF ILLINOIS  
 DEPARTMENT OF TRANSPORTATION

FOR INFORMATION ONLY  
 SN 081-0011

SHEET 15 OF 42 SHEETS

F.A. RTE.	SECTION	COUNTY	TOTAL SHEETS	SHEET NO.
80	D2 BRIDGE PAINTING 2012-2	ROCK ISLAND	46	19
CONTRACT NO. 64H81			ILLINOIS FED. AID PROJECT	