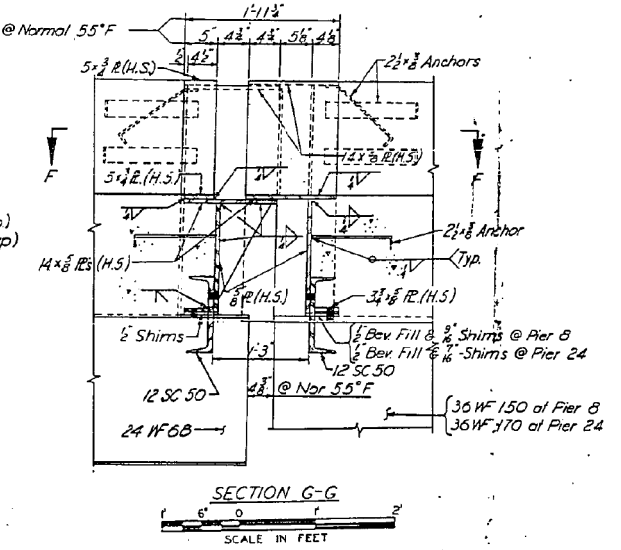
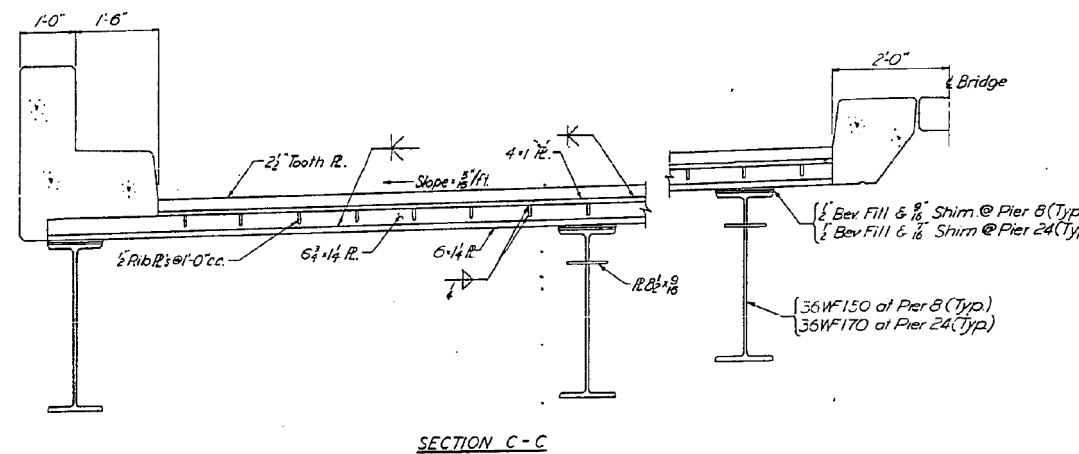
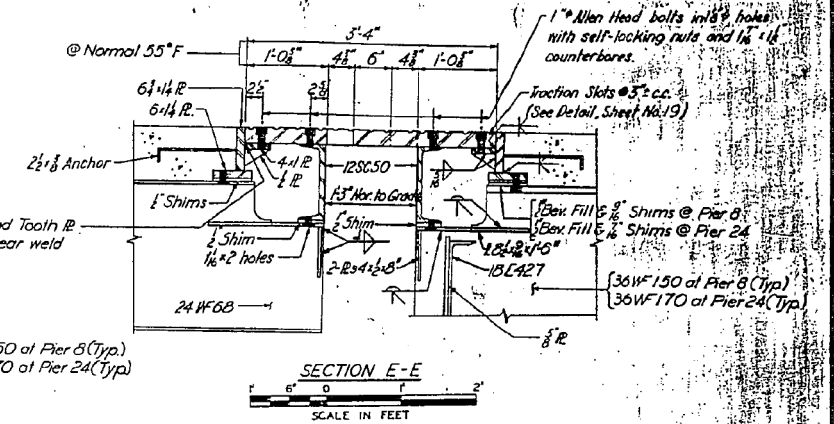
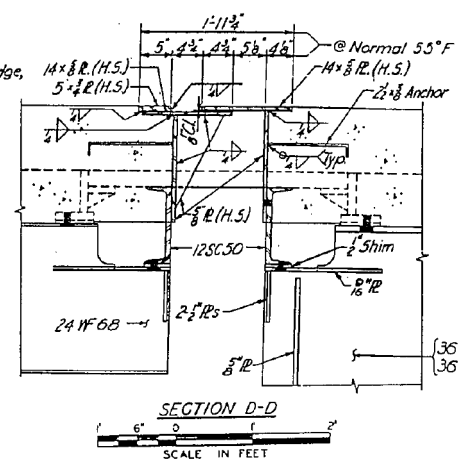
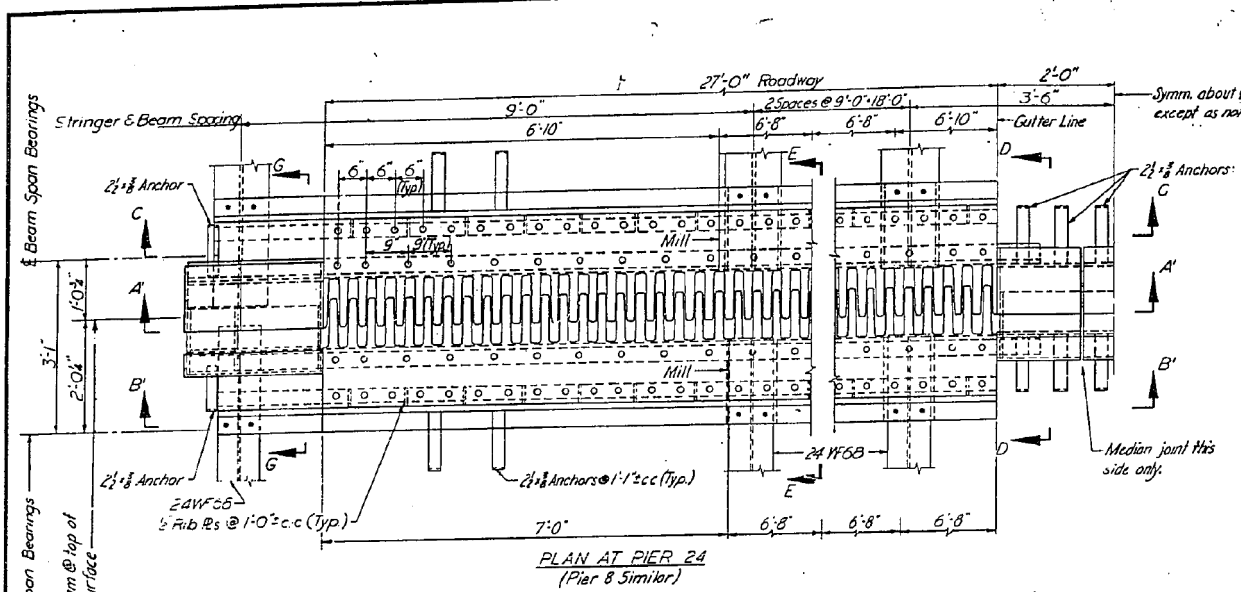


20 of 55

| | | | |
|----------|-------|----------|----------|
| DES. NO. | STATE | DES. AND | DATE |
| 100-1-10 | IOWA | 10/12/12 | 10/12/12 |



NOTES:
 For General Notes and Design Criteria, see Sheet No. 3.
 Expansion Dam shall be shop assembled to correct grade and slope and match marked.
 Material noted as "H.S." shall be Low Alloy High Strength Steel, A.S.T.M. A441-63T. Material not otherwise noted shall conform to A.S.T.M. A36-42T.
 For Drainage Trough Detail of Piers 8 and 24, see Sheet No. 22.
 For Section A-A, B-B & F-F, see Sheet No. 19.
 For Tooth Details, see Sheet No. 19.

0227 00 1391 3042 13403

IOWA STATE HIGHWAY COMMISSION
 AND ILLINOIS DIVISION OF HIGHWAYS
 INTERSTATE BRIDGE
 OVER MISSISSIPPI RIVER AT LE CLAIRE, IOWA
 CONTRACT NO. 2 SUPERSTRUCTURE
 EXPANSION DAMS-PIERS 8 & 24
 SCALE IN FEET UNLESS NOTED
 MODJESKI & MASTERS, ENGINEERS.
 SHEET NO. 20 OF 41
 MAY 1964

Project No: I-80-B(31)310 Design No: 163A Scott County File No: 21704

| | | | | | |
|----------|---------|----------|---------------------------|------|------------------|
| DESIGNED | VHV | EXAMINED | <i>Timothy A. Daulton</i> | DATE | OCTOBER 12, 2012 |
| CHECKED | DAB | PASSED | <i>Carl Pinger</i> | | |
| DRAWN | baliva | | | | |
| CHECKED | VHV DAB | | | | |

STATE OF ILLINOIS
 DEPARTMENT OF TRANSPORTATION

FOR INFORMATION ONLY
 SN 081-0011

| | | | | |
|--------------------|---------------------------|-------------|---------------------------|-----------|
| F.A. RTE. | SECTION | COUNTY | TOTAL SHEETS | SHEET NO. |
| 80 | D2 BRIDGE PAINTING 2012-2 | ROCK ISLAND | 46 | 21 |
| CONTRACT NO. 64H81 | | | ILLINOIS FED. AID PROJECT | |

SHEET 17 OF 42 SHEETS