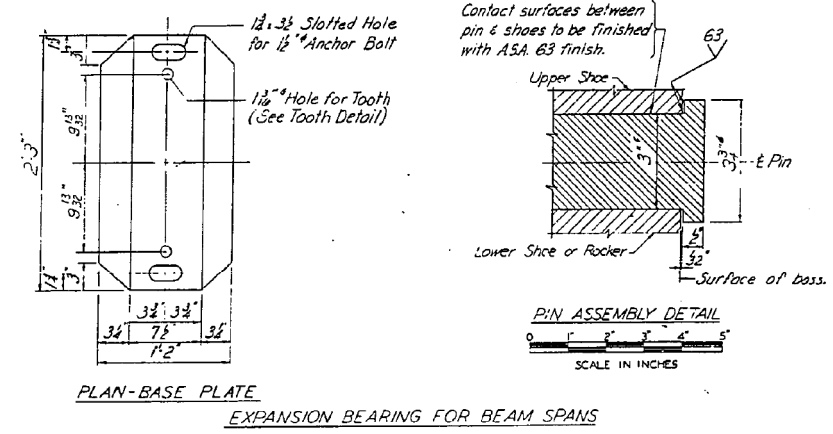
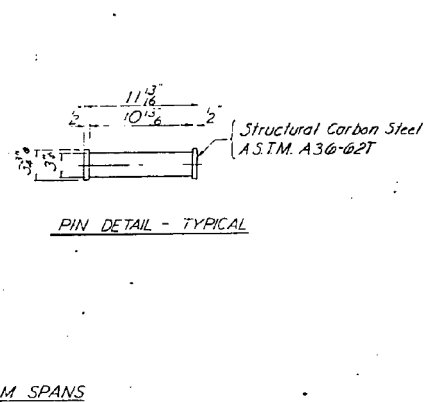
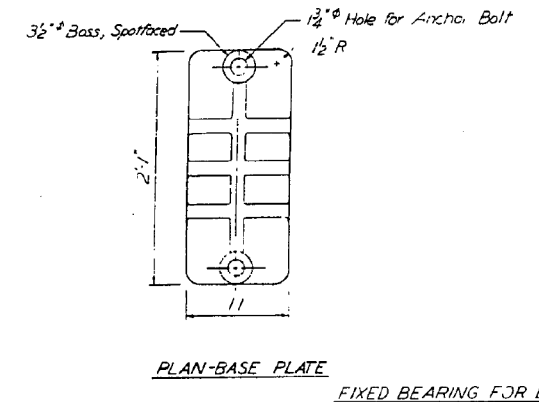
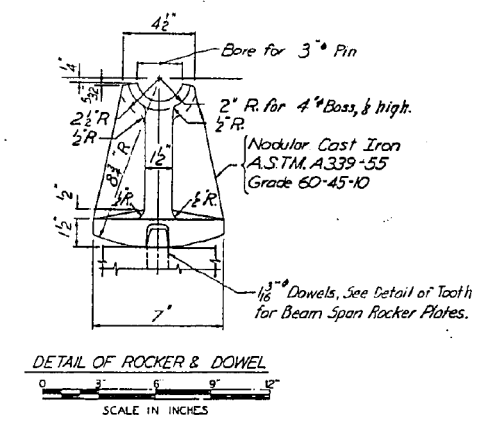
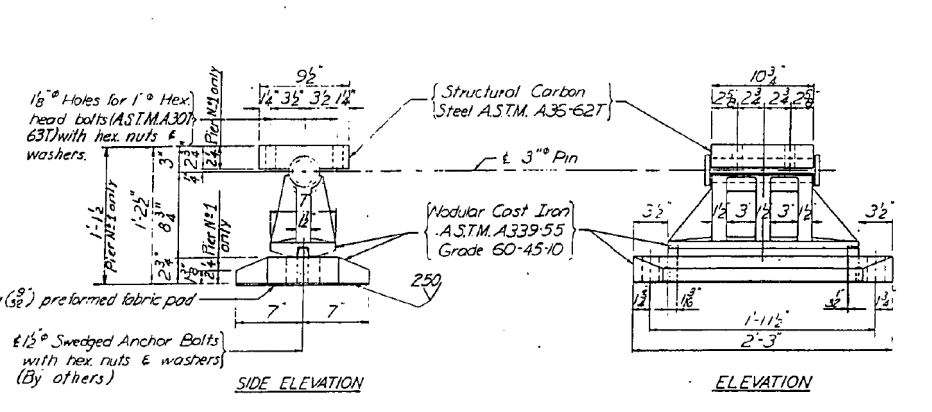
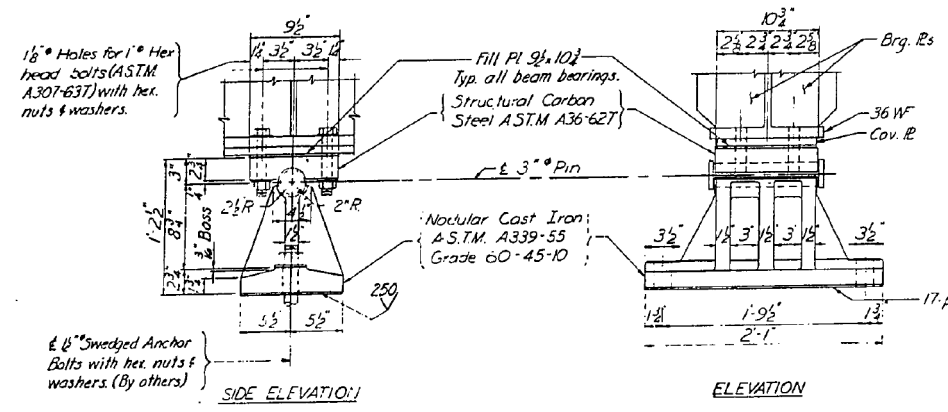
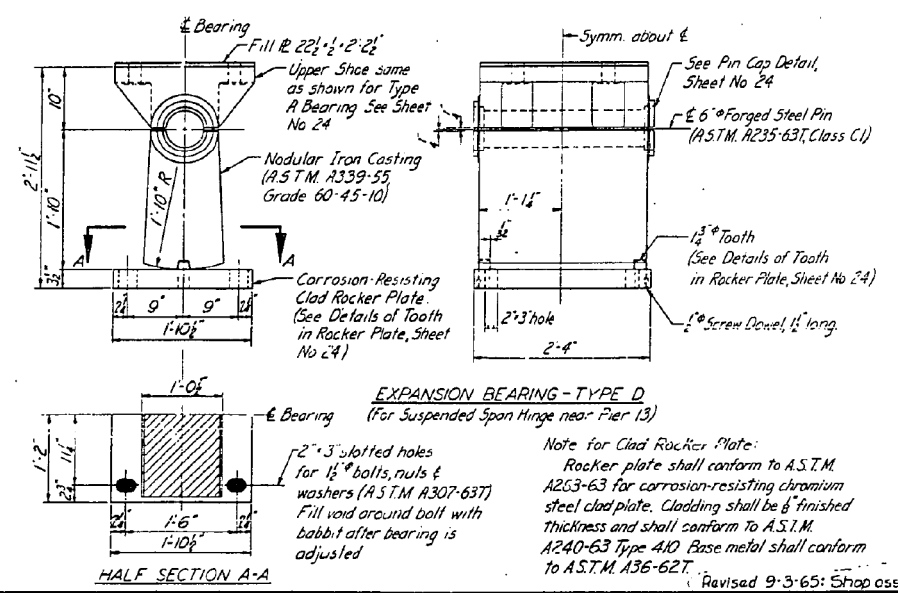


REV.	DATE	BY	CHKD.	SHEET NO.	TOTAL SHEETS
5	10/14/63	PROBES	DR.	25	41

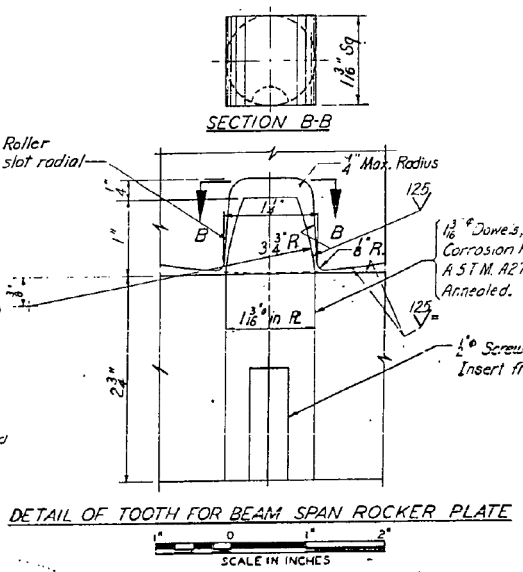
Note:  
For thickness of fill #s, see Table of Fills  
for Beam Span Bearings on Sheet No. 8



LOCATION	Dimension A for Temperature at Time of Setting		
	10°F	50°F	90°F
Tower Abutment	+ 3/8	0	- 3/8
Pier 1	+ 4	0	- 4
Pier 3	- 4	0	+ 4
Pier 4 (Back Sta)	- 3/8	0	+ 3/8
Pier 4 (Ahead Sta)	+ 3/8	0	- 3/8
Pier 5	+ 3/8	0	- 3/8
Pier 7	- 3/8	0	+ 3/8
Pier 8 (Back Sta)	- 3/8	0	+ 3/8
Pier 8 (Ahead Sta)	+ 3/8	0	- 3/8
Pier 9	+ 3/8	0	- 3/8
Pier 11	- 3/8	0	+ 3/8
Hinge near Pier 12	- 1/2	0	+ 1/2
Pier 12	+ 3/8	0	- 3/8
Hinge near Pier 13	+ 1/8	0	- 1/8
Pier 15	- 3/8	0	+ 3/8
Hinge near Pier 15	+ 1/2	0	- 1/2
Pier 16	+ 3/8	0	- 3/8
Pier 18	- 3/8	0	+ 3/8
Pier 19 (Back Sta)	- 1	0	+ 1
Pier 19 (Ahead Sta)	+ 3/8	0	- 3/8
Pier 20	+ 3/8	0	- 3/8
Pier 22	- 3/8	0	+ 3/8
Pier 23	- 3/8	0	+ 3/8
Pier 24 (Back Sta)	- 1 1/4	0	+ 1 1/4
Pier 24 (Ahead Sta)	+ 3/8	0	- 3/8
Pier 25	+ 3/8	0	- 3/8
Pier 27	- 3/8	0	+ 3/8
Illinois Abutment	- 3/8	0	+ 3/8



**NOTES.**  
For General Notes and Design Criteria see Sheet No. 3.  
All bearings shall be assembled complete in the shop, checked for fit and full bearing and match-marked for assembly in the field, except W beam span bearings.  
17-ply (36) preformed fabric pads to be placed under the base plate, shall be furnished in accordance with paragraph 4.31.1 of the I.S.H.C. standard specifications for construction.  
Nuts and/or anchor bolts shall be filled with zinc-rich metal after adjustment of bearings.  
Anchor bolts, nuts and washers are to be supplied by the Substructure Contractor.



For temperatures other than those shown use proportional values of dimension 'A'.  
IOWA STATE HIGHWAY COMMISSION  
AND ILLINOIS DIVISION OF HIGHWAYS  
INTERSTATE BRIDGE  
OVER MISSISSIPPI RIVER AT LE CLAIRE, IOWA  
CONTRACT NO. 2 - SUPERSTRUCTURE  
**BEARINGS - 2**  
SCALE IN FEET  
UNLESS NOTED  
MAY 1964  
MODJESKI & MASTERS, ENGINEERS  
SHEET NO. 25 OF 41  
DR. FLICKER

02271601324148351745 7310