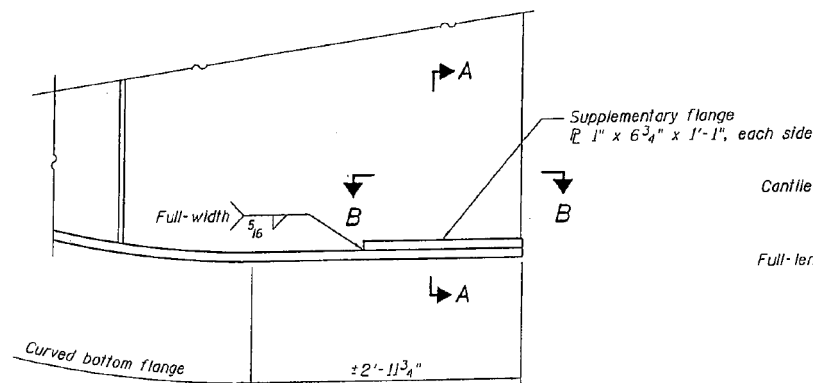
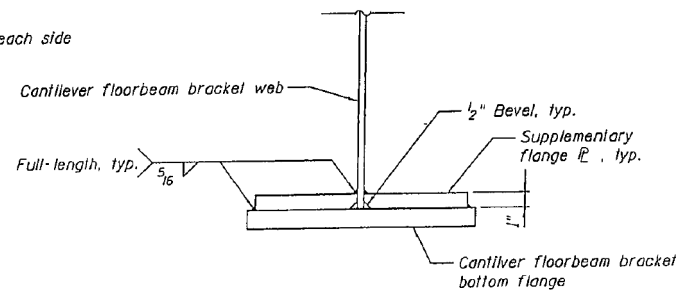


STATE OF ILLINOIS
DEPARTMENT OF TRANSPORTATION



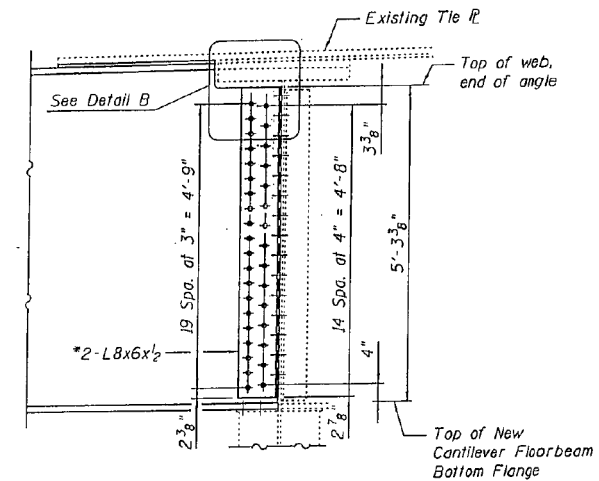
**SUPPLEMENTAL BOTTOM FLANGE PLATE
AT CANTILEVER FLOORBEAM BRACKET
SINGLE GIRDER SPANS**

Bottom of cantilever floorbeam web connection angles shall be trimmed $\frac{3}{4}$ " to avoid conflict with supplementary flange plates. For the web connection angle details, see Sheet No. 8.



SECTION A-A

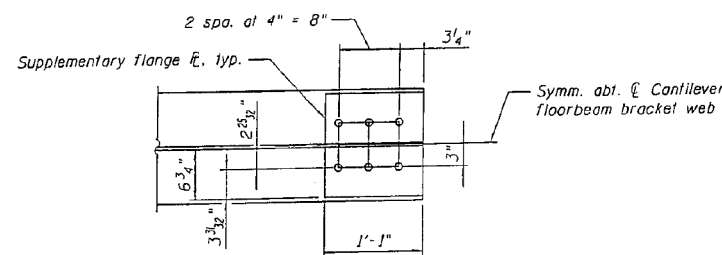
Note: Weld between bracket web and bottom flange not shown for clarity.



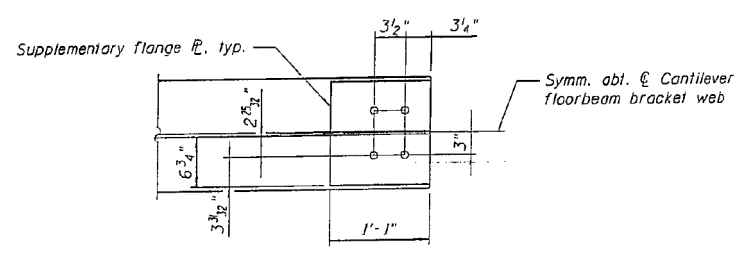
**CANTILEVER FLOORBEAM BRACKET
MODIFICATION AT MARK NO. 306B**

* Grade SOWT2, one coat shop primer

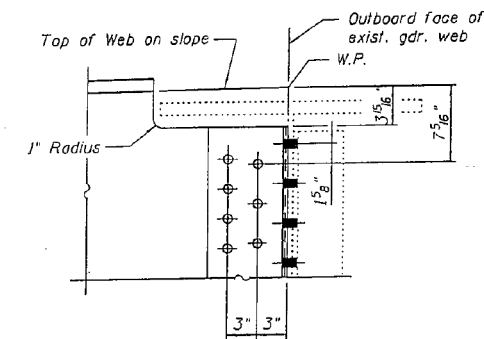
Span 12, Floorbeam 3, Westbound only



**SECTION B-B
FLOORBEAM MARK NO. 306A, 328A,
328B, 328C, 401A, AND 614B**



**SECTION B-B
FLOORBEAM MARK NO. 306B**



DETAIL B

Notes:
Reference to cantilever floorbeam mark numbers are from 1965 original shop drawings.
For location of mark numbers, see Sheet No. 8.
 $\frac{5}{16}$ " ϕ Holes for $\frac{7}{8}$ " ϕ HS A325 bolts.

PLATE LOCATIONS

MARK NO.	SPAN	FLRBM NO.
306A	20	FB1
306B	20	FB5
328A	9	FB0
328B	19	FB7
328C	24	FB6
401A	16	FB2
614B	21	FB6

Note:
Supplemental plates required on westbound Cantilever Floorbeam Brackets only.

DESIGNED YSS
CHECKED DWP
DRAWN PRC
CHECKED YSS



02/17/11

**CANTILEVER FLOORBEAM REPLACEMENT
SINGLE GIRDER SPANS - 2
I-80 OVER
MISSISSIPPI RIVER
STRUCTURE NO. 081-0011**

SHEET NO. 8A	F.A.I. RTE.	SECTION	COUNTY	TOTAL SHEETS	SHEET NO.
33 SHEETS	80	(81-1B)M-4	ROCK ISLAND		
		SN 081-0011			CONTRACT NO. 64F31
		FED. ROAD DIST. NO. 7	ILLINOIS		FED. AID PROJECT

New Sheet

Construction Change 02/17/11 P.R.C.

DESIGNED VHV
CHECKED DAB
DRAWN baliva
CHECKED VHV DAB

EXAMINED *Timothy A. Daulton*
ACTING ENGINEER OF STRUCTURAL SERVICES

PASSED *Carl Berger*
ACTING ENGINEER OF BRIDGES AND STRUCTURES

DATE - OCTOBER 12, 2012

STATE OF ILLINOIS
DEPARTMENT OF TRANSPORTATION

FOR INFORMATION ONLY
SN 081-0011

SHEET 24 OF 42 SHEETS

F.A. RTE.	SECTION	COUNTY	TOTAL SHEETS	SHEET NO.
80	D2 BRIDGE PAINTING 2012-2	ROCK ISLAND	46	28
				CONTRACT NO. 64H81
				ILLINOIS FED. AID PROJECT