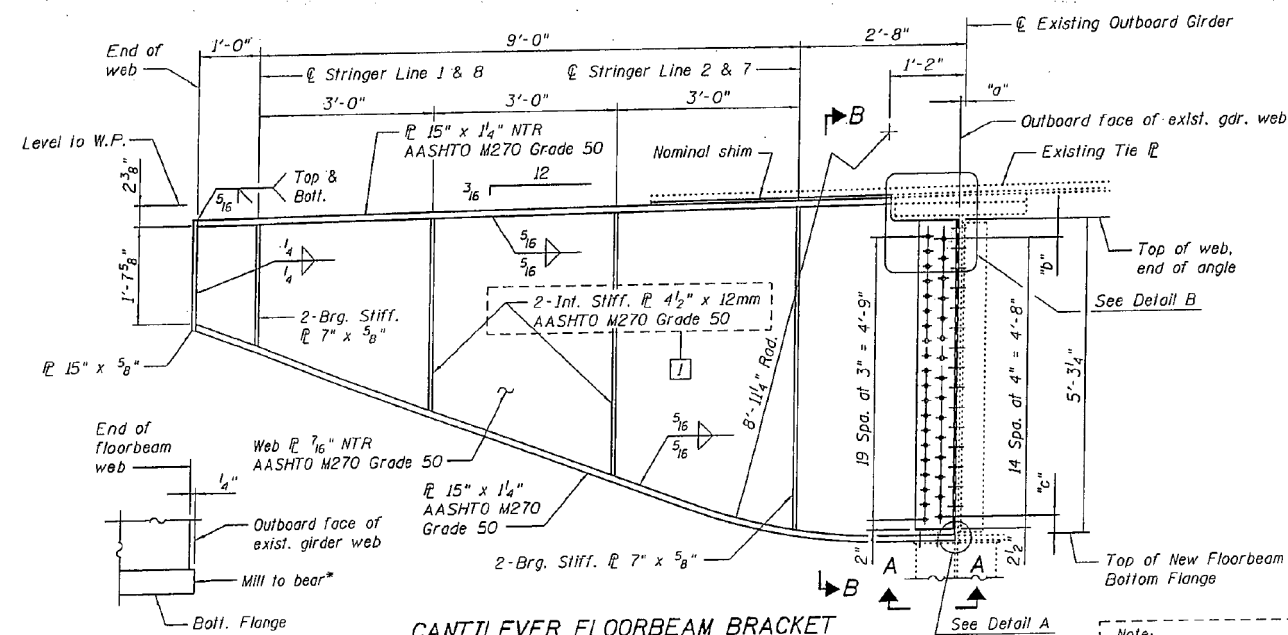


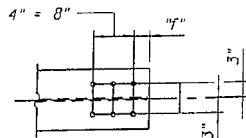
STATE OF ILLINOIS
DEPARTMENT OF TRANSPORTATION



DETAIL A

Edge of flange shall fit within 10/1000" for a minimum 75% of the bearing area.

VIEW A-A
1014A, 1014B, 1014C,
1014D, 1014F AND 1014G



VIEW A-A
1014E

DESIGNED	YSS
CHECKED	ACK
DRAWN	PRC
CHECKED	YSS

09/17/09



CANTILEVER FLOORBEAM BRACKET

Note:
Load carrying components designated "NTR" shall conform to the supplemental requirement for Notch Toughness, Zone 2 for Fractural Critical Members.

Note:
For supplemental bottom flange plates and additional modification details, see Sheet No. 9A.

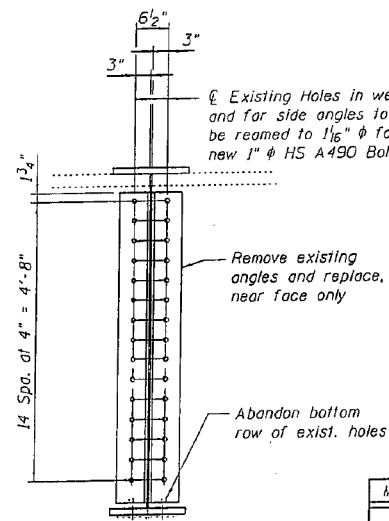


TABLE OF FLOORBEAMS

MARK NO.	SPAN	FLRBM NO.	QUANTITY**
1014A	12	FB7	2
1014B	16	FB1	2
1014C	14	FB15	2
1014D	14	FB4	2
1014E	13	FB3	2
1014F	15	FB4	2
1014G	14	FB7	2
1014E	14	FB18	2
1014F	14	FB7	2
1014G	14	FB11	2

**Includes one on Eastbound and one on Westbound side of bridge.
For FLRBM NO., see Sheet No. 6 of 33.

DETAIL B

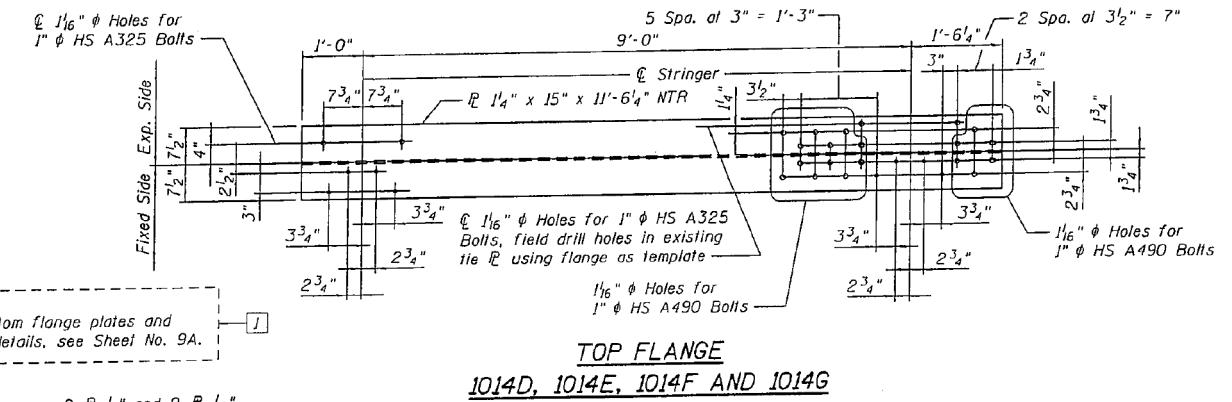
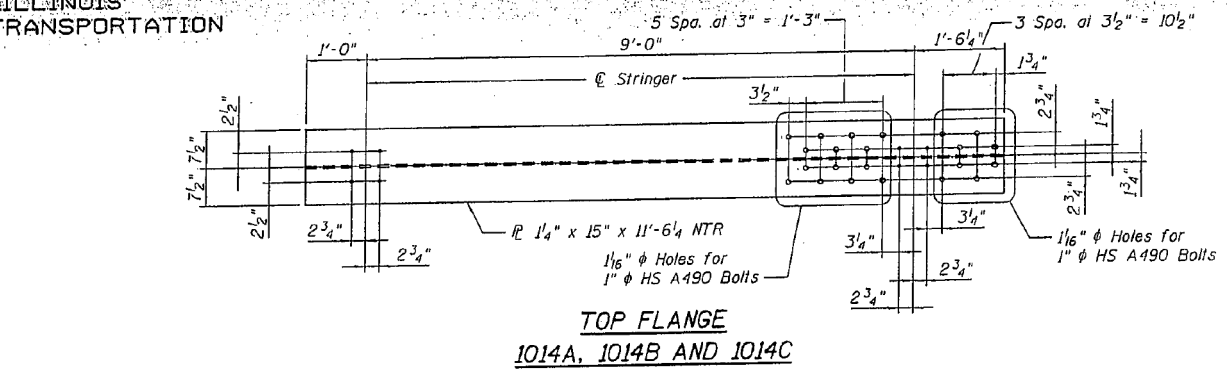
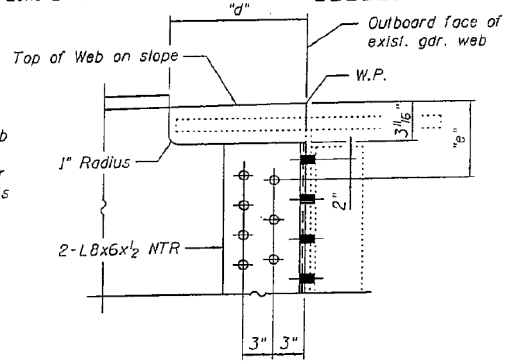
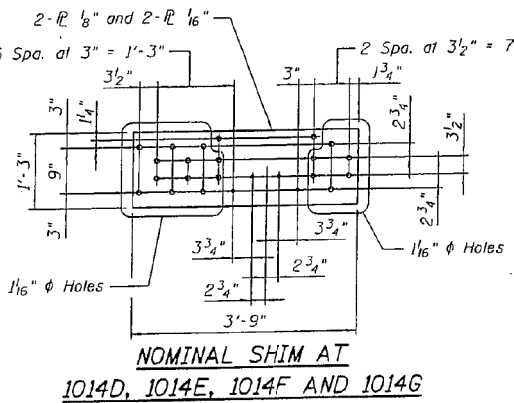
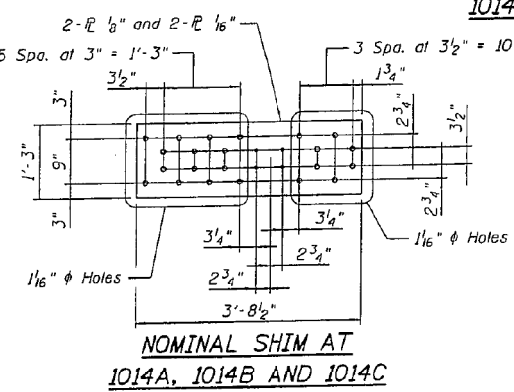


TABLE OF DIMENSIONS

MARK NO.	"a"	"b"	"c"	"d"	"e"	"f"
1014A	1 1/4"	4"	3 1/4"	1'-1 1/2"	7 1/8"	3 1/4"
1014B	7/16"	4"	3 1/4"	1'-1 1/16"	7 1/8"	3 1/16"
1014C	7/16"	3 3/4"	3 1/2"	1'-1 9/16"	7 1/8"	3 1/16"
1014D	5/16"	4"	3 1/4"	1'-1 1/16"	7 1/8"	3 3/16"
1014E	1/16"	4"	3 1/4"	1'-1 1/16"	7 1/8"	3 1/16"
1014F	3/8"	3 3/4"	3 1/2"	1'-1 3/8"	7 1/8"	3 8/16"
1014G	3/8"	3 3/4"	3 1/2"	1'-1 3/8"	7 1/8"	3 8/16"

Notes:
1/16" phi Holes for 7/8" phi HS A325 Bolts unless otherwise noted.
Structural steel shall be AASHTO M270 Grade 36, except as noted.
Reference to cantilever floorbeam mark numbers are from 1965 original shop drawings.
All cantilever floorbeams shall be set normal to profile grade.
For cantilever floorbeam moment and shear tables, see Sheet No. 3 of 33.
For stiffener welding details, see Sheet No. 8 of 33.
Cost of removal of existing cantilever floorbeams shall be included in Structural Steel Removal.
Cost of new cantilever floorbeam shall be included in Furnishing and Erecting Structural Steel.



CANTILEVER FLOORBEAM REPLACEMENT
DOUBLE GIRDER SPANS - 1
I-80 OVER
MISSISSIPPI RIVER
STRUCTURE NO. 081-0011

SHEET NO. 9	F.A.I. RTE.	SECTION	COUNTY	TOTAL SHEETS	SHEET NO.
	80	(81-1B)M-4	ROCK ISLAND		
33 SHEETS	SN 081-0011		CONTRACT NO. 64F31		
	FED. ROAD DIST. NO. 7 ILLINOIS FED. AID PROJECT				

Construction Change 02/17/11 P.R.C.

DESIGNED	VHV
CHECKED	DAB
DRAWN	baliva
CHECKED	VHV DAB

EXAMINED	Timothy A. D'Amico	DATE	OCTOBER 12, 2012
PASSED	ACTING ENGINEER OF STRUCTURAL SERVICES		
	Carl Berger		
	ACTING ENGINEER OF BRIDGES AND STRUCTURES		

STATE OF ILLINOIS
DEPARTMENT OF TRANSPORTATION

FOR INFORMATION ONLY
SN 081-0011

SHEET 25 OF 42 SHEETS

F.A. RTE.	SECTION	COUNTY	TOTAL SHEETS	SHEET NO.
80	D2 BRIDGE PAINTING 2012-2	ROCK ISLAND	46	29
CONTRACT NO. 64H81			ILLINOIS FED. AID PROJECT	